



# SHAFTWALL & AREA SEPARATION WALL SYSTEMS

## PRODUCT CATALOG



100% American-Owned and Operated | [marinoware.com](http://marinoware.com)



**MARINO★WARE®**

## THE BEST PRODUCTS, QUALITY, AND CUSTOMER SERVICE.

Our large inventory of both finished products and coil steel allow us to readily satisfy your requests. Our fleet of trucks assures prompt deliveries and in many instances, next day delivery. Our experienced sales team, coupled with an extensive distribution network, make MarinoWARE® the obvious choice for your project.

*MarinoWARE®, a division of Ware Industries, is a long-standing manufacturer of steel framing products, and is committed to leading the industry in innovation, quality materials and customer service. Headquartered in South Plainfield, N.J., it has produced steel solutions for more than 70 years, and offers a wide choice of framing components and connectors that save their customers time, labor and cost. MarinoWARE® operates state-of-the-art production facilities in New Jersey, Georgia and Indiana, as well as a sales office in New York.*

**For more information on our products and services, call 1-800-627-4661 or visit [www.MarinoWARE.com](http://www.MarinoWARE.com).**

---

### Warranty & Limitations

All products presented herein are warranted to the buyer to be free from defects in material and workmanship. The foregoing warranty is non-assignable and in lieu of and excludes all other warranties not expressly set forth herein, whether express or implied by operation of law or otherwise, including but not limited to any implied warranties of merchantability or fitness for a particular purpose. All details and specifications presented herein are intended as a general guide for the use of MarinoWARE® framing systems. These products should not be used without evaluation by a qualified engineer or architect to determine their suitability for a specific use.

MarinoWARE® assumes no responsibility for failure resulting from use of its details or specifications, or for failure resulting from improper application or installation of these products.

### Governing Law

All issues arising in connection with your order and all transactions associated with it shall be interpreted according to the laws of the State of New Jersey, and all actions or other proceedings arising out of such issues shall be brought only in Superior Court, State of New Jersey, County of Essex, or United States District Court for the District of New Jersey. No action may be brought more than one year after accrual of the cause of action therefore.



GENERAL INFORMATION

ASTM SPECIFICATION DESCRIPTIONS

**A1003** - Standard specification for steel sheet, carbon, metallic and nonmetal-coated for cold formed framing members

**A653** - Standard specification for steel sheet, zinc-coated (galvanized) or zinc-iron alloy coated by hot-dip process

**A924** - Standard specification for general requirements for steel sheet, metallic-coated by the hot-dip process

**C645** - Standard specification for nonstructural steel framing members

**C754** - Standard Specification for Installation of Steel Framing Members to Receive Screw-Attached Gypsum Panel Products

TECHNICAL SERVICES

MarinoWARE offers its customers free expert technical assistance with the selection and use of our products. If you have questions or need more information on any of the products listed in this catalog, contact our Technical Services department. Our knowledgeable staff is ready to assist you. In most cases Technical Services representatives can provide immediate responses.

Technical Services can be reached at 866-545-1545, or at [technicalservices@marinoware.com](mailto:technicalservices@marinoware.com).

LEED® INFORMATION - MATERIALS & RESOURCES

MarinoWARE® is proud to support the building industry in its efforts to create sustainable commercial and residential buildings. We support the Leadership in Energy & Environmental Design (LEED®) program and have LEED® accredited professionals on staff. Using products manufactured by MarinoWARE® can help in accumulating LEED® points in several categories.

TABLE OF CONTENTS

General Information ..... 1

**SHAFTWALL:**

**CT Stud, Tabbed Track and Jamb Track .....2**

Physical Properties ..... 2

Vertical Limiting Heights. .... 3

Horizontal Spans..... 3

Shaftwall Fire and Sound Rating Summaries..... 4

Installation Instructions ..... 5

Construction Details ..... 6–7

**AREA SEPARATION WALL:**

**H-Stud, C-Runner and Aluminum Break Away Clip .....8**

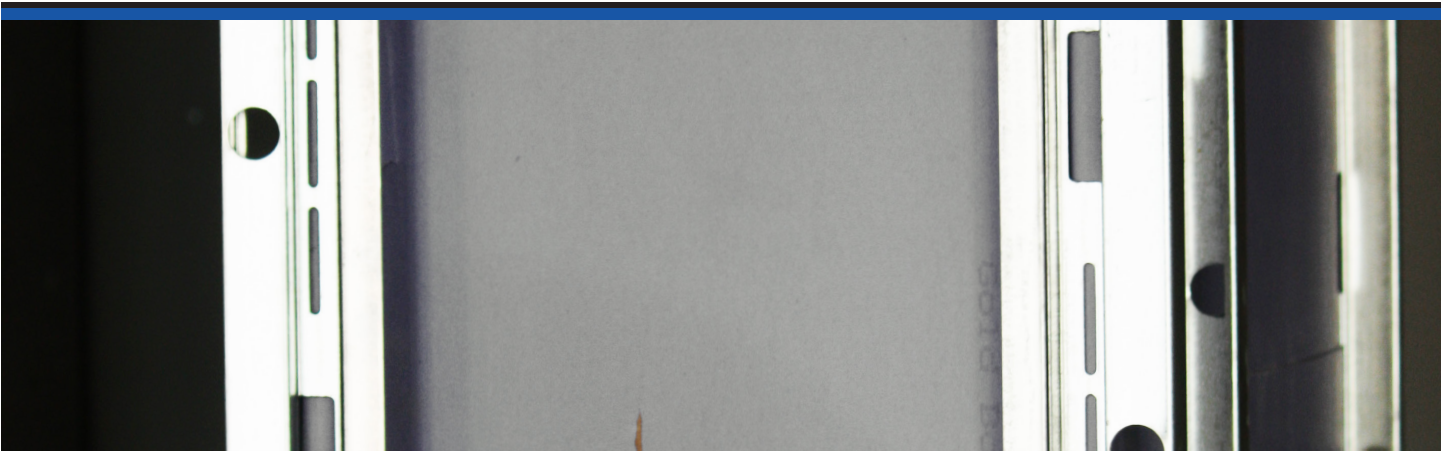
Product Assembly,..... 8

Area Separation Wall Fire & Sound Rating Summaries .... 9

Area Separation Wall Installation Instructions ..... 10

Suggested Details for Area Separation Wall System .... 10

Architectural Specifications ..... 11–12



## CT STUD, TABBED TRACK & JAMB TRACK

MarinoWARE created its CT Shaftwall System, to be a flexible shaftwall assembly that can accommodate any UL Classified gypsum liner board for maximum versatility in design, purchase, and construction. The MarinoWARE CT Shaftwall System is comprised of CT-Stud and Tabbed Track components, resulting in easier installation and fewer parts to inventory and purchase.

### Features include:

- Fire rated
- Full range of sizes: 2 1/2", 4", and 6"
- 25, 20 and 18 gauges
- Multiple production locations
- Next day delivery options
- One-sided installation design

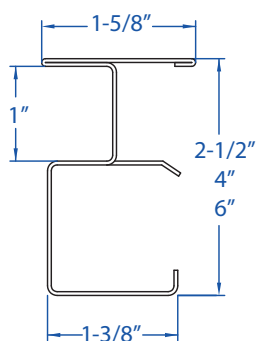
PHYSICAL PROPERTIES							SECTION PROPERTIES			
MODEL NO.	WEB	GAUGE	MIL	KSI	DESIGN (in)	COATING	WEIGHT (lb/ft)	AREA (in <sup>2</sup> )	I <sub>x</sub> (in <sup>4</sup> )	S <sub>x</sub> (in <sup>3</sup> )
212CT25	2-1/2"	25	18	40	0.0188	G40	0.456	0.134	0.127	0.0939
212CT20	2-1/2"	20	33	40	0.0346	G40	0.833	0.245	0.226	0.166
400CT25	4"	25	18	40	0.0188	G40	0.552	0.162	0.387	0.185
400CT20	4"	20	33	40	0.0346	G40	1.010	0.297	0.695	0.331
400CT18	4"	18	43	40	0.0451	G60	1.310	0.385	0.892	0.424
600CT20	6"	20	33	40	0.0346	G40	1.250	0.366	1.850	0.598
600CT18	6"	18	43	40	0.0451	G60	1.620	0.475	2.380	0.770

### Notes:

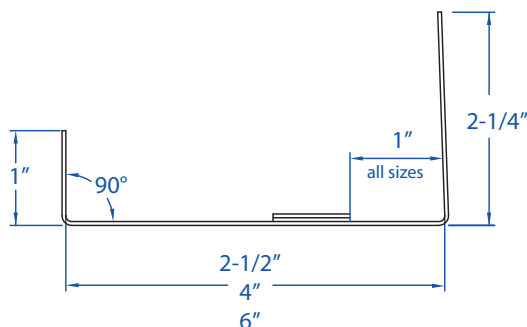
1. Tabbed Track and Jamb Track available in same size and gauge as CT studs
2. I<sub>x</sub> = Moment of inertia
3. S<sub>x</sub> = Section modulus
4. A = Sectional area



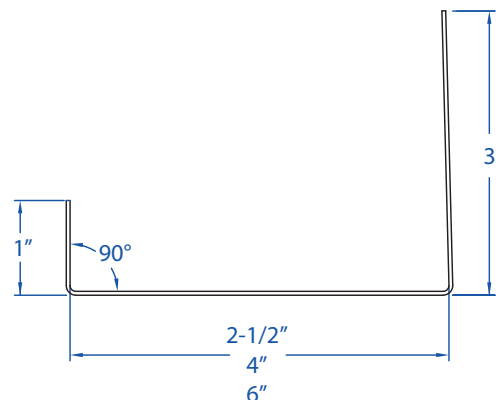
CT Stud with  
Tabbed Track



CT Stud



Tabbed Track



Jamb Track

For more information, please contact MarinoWARE® Technical Services at 866-545-1545.

This technical information reflects the most current information available and supersedes any and all previous publications effective September 29, 2020 | MW-Shaftwall ASW Catalog | © WARE Industries, Inc. 2020

# CT STUD LIMITING HEIGHTS & HORIZONTAL SPANS

## 1 Hour Shaftwall System - limiting heights

DEPTH	GAUGE	DESIGN (in)	mil	5 PSF				7.5 PSF				10 PSF			
				L/120	L/180	L/240	L/360	L/120	L/180	L/240	L/360	L/120	L/180	L/240	L/360
2-1/2"	25	0.0188	18	13'-3"f	11'-11"	10'-10"	9'-5"	10'-10"f	10'-5"	9'-5"	8'-3"	9'-5"f	9'-5"	8'-7"	7'-6"
4"	25	0.0188	18	17'-6"f	15'-4"	13'-11"	12'-2"	14'-3"f	13'-5"	12'-2"	10'-8"	12'-4"f	12'-2"	11'-1"	9'-8"
2-1/2"	20	0.0346	33	17'-7"	15'-5"	14'-0"	12'-3"	15'-5"	13'-5"	12'-3"	10'-8"	13'-0"	12'-3"	11'-1"	9'-8"
4"	20	0.0346	33	21'-11"f	19'-3"	17'-6"	15'-3"	17'-11"f	16'-10"	15'-3"	13'-4"	15'-6"f	15'-3"	13'-11"	12'-2"
6"	20	0.0346	33	24'-6"f	24'-6"f	24'-6"f	22'-7"	20'-0"f	20'-0"f	20'-0"f	19'-9"	17'-4"f	17'-4"f	17'-4"f	17'-4"f
4"	18	0.0451	43	21'-11"f	19'-3"	17'-6"	15'-3"	17'-11"f	16'-10"	15'-3"	13'-4"	15'-6"f	15'-3"	13'-11"	12'-2"
6"	18	0.0451	43	28'-1"f	28'-1"f	27'-10"	24'-3"	22'-11"f	22'-11"f	22'-11"f	21'-3"	19'-10"f	19'-10"f	19'-10"f	19'-3"

## 2 Hour Shaftwall System - limiting heights

DEPTH	GAUGE	DESIGN (in)	MIL	5 PSF				7.5 PSF				10 PSF			
				L/120	L/180	L/240	L/360	L/120	L/180	L/240	L/360	L/120	L/180	L/240	L/360
2-1/2"	25	0.0188	18	14'-5"	12'-7"	11'-5"	10'-0"	12'-7"	11'-0"	10'-0"	8'-9"	11'-2"f	10'-0"	9'-1"	7'-11"
4"	25	0.0188	18	18'-6"	16'-2"	14'-8"	12'-10"	16'-0"f	14'-2"	12'-10"	11'-3"	13'-10"f	12'-10"	11'-8"	10'-2"
2-1/2"	20	0.0346	33	17'-0"	14'-10"	13'-6"	11'-9"	14'-10"	13'-0"	11'-9"	10'-4"	13'-6"	11'-9"	10'-9"	9'-4"
4"	20	0.0346	33	23'-8"	20'-8"	18'-9"	16'-5"	20'-8"	18'-1"	16'-5"	14'-4"	18'-9"	16'-5"	14'-11"	13'-0"
6"	20	0.0346	33	28'-10"f	28'-10"	26'-4"	23'-0"	23'-6"f	23'-6"	23'-0"	20'-1"	20'-5"f	20'-5"f	20'-5"f	18'-3"
4"	18	0.0451	43	23'-8"	20'-8"	18'-9"	16'-5"	20'-8"	18'-1"	16'-5"	14'-4"	18'-9"	16'-5"	14'-11"	13'-0"
6"	18	0.0451	43	30'-0"f	30'-0"f	28'-7"	25'-0"	24'-6"f	24'-6"f	24'-6"f	21'-10"	21'-2"f	21'-2"f	21'-2"f	19'-10"

## 2 Hour Stairwell System - limiting heights

DEPTH	GAUGE	DESIGN (in)	MIL	5 PSF				7.5 PSF				10 PSF			
				L/120	L/180	L/240	L/360	L/120	L/180	L/240	L/360	L/120	L/180	L/240	L/360
2-1/2"	25	0.0188	18	15'-7"	13'-8"	12'-5"	10'-10"	12'-9"	11'-11"	10'-10"	9'-5"	11'-0"f	10'-10"	9'-10"	8'-7"
4"	25	0.0188	18	17'-9"f	17'-6"	15'-11"	13'-11"	14'-6"f	14'-6"f	13'-11"	12'-2"	12'-7"f	12'-7"f	12'-7"	11'-0"
2-1/2"	20	0.0346	33	19'-6"f	17'-5"	15'-10"	13'-10"	15'-11"f	15'-3"	13'-10"	12'-1"	13'-9"f	13'-9"f	12'-7"	11'-0"
4"	20	0.0346	33	22'-4"f	22'-4"f	20'-8"	18'-0"	18'-3"f	18'-3"f	18'-0"	15'-9"	15'-9"f	15'-9"f	15'-9"f	14'-4"
6"	20	0.0346	33	25'-1"f	25'-1"f	23'-5"	20'-6"	20'-5"f	20'-5"f	20'-5"f	17'-11"	17'-9"f	17'-9"f	17'-9"f	16'-3"
4"	18	0.0451	43	22'-4"f	22'-4"f	20'-8"	18'-0"	18'-3"f	18'-3"f	18'-0"	15'-9"	15'-9"f	15'-9"f	15'-9"f	14'-4"
6"	18	0.0451	43	28'-1"f	28'-1"f	26'-0"	22'-9"	22'-11"f	22'-11"f	22'-9"	19'-10"	19'-11"f	19'-11"f	19'-11"	18'-0"

## Shaftwall Systems - Horizontal Spans (dead load only)

DEPTH	GAUGE	DESIGN (in)	mil	1 Hour				2 Hour			
				L/120	L/180	L/240	L/360	L/120	L/180	L/240	L/360
2-1/2"	25	0.0188	18	11'-7"f	10'-11"	9'-11"	8'-8"	12'-2"	10'-7"	9'-8"	8'-5"
2-1/2"	20	0.0346	33	15'-8"	13'-8"	12'-5"	10'-10"	13'-11"	12'-2"	11'-1"	9'-8"
4"	25	0.0188	18	15'-1"	14'-0"	12'-8"	11'-1"	14'-11"f	13'-7"	12'-4"	10'-9"
4"	20	0.0346	33	17'-11"	16'-10"	15'-3"	13'-4"	17'-6"f	16'-9"	15'-3"	13'-4"
6"	20	0.0346	33	19'-5"f	19'-5"f	19'-5"f	19'-5"f	18'-0"f	18'-0"f	18'-0"f	18'-0"
6"	18	0.0451	43	21'-7"f	21'-7"f	21'-7"f	20'-4"	18'-3"f	18'-3"f	18'-3"f	18'-3"f

### Notes:

(f) Indicates flexure controls

24" o.c. only framing

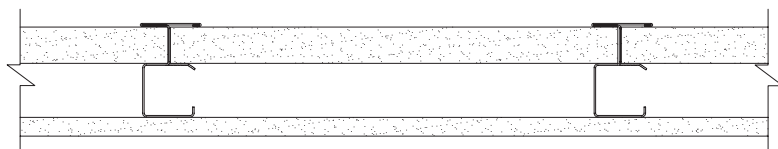
Horizontal spans do not carry live loads, equipment, lighting or storage loads.

For more information, please contact MarinoWARE® Technical Services at 866-545-1545.

This technical information reflects the most current information available and supersedes any and all previous publications effective September 29, 2020 | MW-Shaftwall ASW Catalog | © WARE Industries, Inc. 2020

# SHAFTWALL FIRE & SOUND RATING SUMMARIES

## 1 Hour Shaftwall Assembly



### Test Reference:

Warnock-Hersey

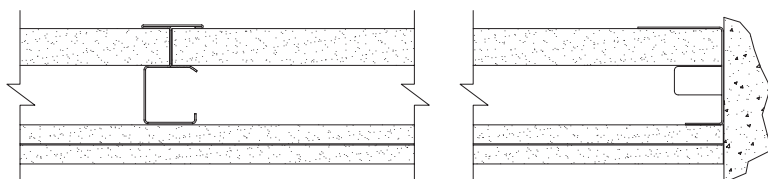
### Fire Components

- Any UL Classified 1" thick Liner Board Type X,
- MarinoWARE CT Stud and Tabbed Track
- Any UL Classified of one layer of 5/8" Type X or 1/2" Type C gypsum wallboard, oriented vertically.

### Sound Rating (STC)

- 2 1/2" CT=38/41\*
- 4" CT=41/47\*
- 6" CT=44/48\*

## 2 Hour Shaftwall Assembly



### Test Reference:

Warnock-Hersey

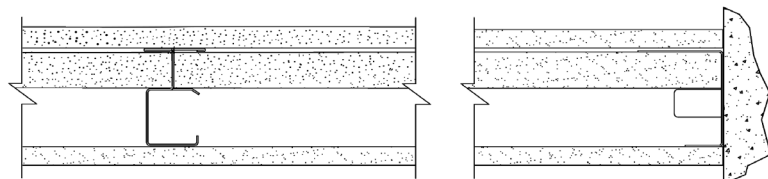
### Fire Components

- Any UL Classified 1" thick Liner Board Type X,
- MarinoWARE CT Stud and Tabbed Track
- Any UL Classified of two layers of 5/8" Type X or 1/2" Type C gypsum wallboard, oriented vertically.

### Sound Rating (STC)

- 2-1/2" CT=40/45\*
- 4" CT=45/49\*
- 6" CT=45/50\*

## 2 Hour Stairwall Assembly



### Test Reference:

Warnock-Hersey

### Fire Components

- Any UL Classified 1" thick Liner Board Type X,
- MarinoWARE CT Stud and Tabbed Track
- Any UL Classified of two layers of 5/8" Type X or 1/2" Type C gypsum wallboard, oriented vertically.

### Sound Rating (STC)

- 2-1/2" CT=40/45\*
- 4" CT=45/49\*
- 6" CT=45/50\*

### Notes:

\* Represents the same assembly with the addition of 1-1/2" of blanket insulation installed in the cavity.

Generic UL Assemblies for CT Studs			NYC Approval
UL U417	UL U499	UL V473	CT Stud - MEA 148-05-M (2 Hours) CT Stud - MEA 148-05-M Vol. 2
UL U428	UL V451	UL V481	
UL U429	UL V455	UL V493	
UL U497	UL V470	UL V414	
UL U498	UL V472	UL V419	

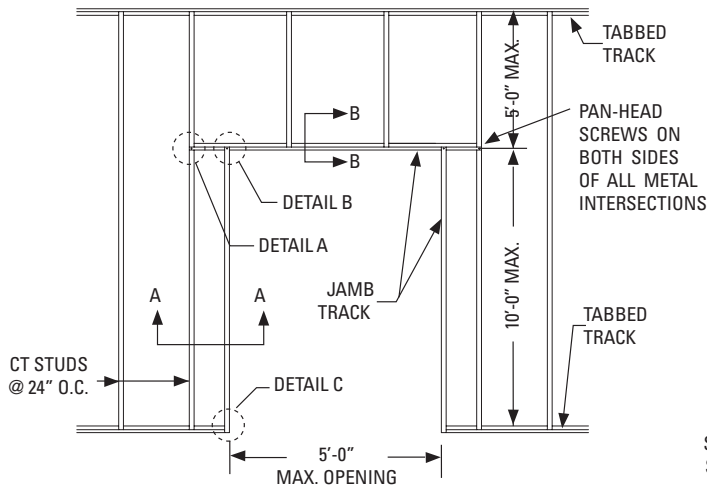
For more information, please contact MarinoWARE® Technical Services at 866-545-1545.

This technical information reflects the most current information available and supersedes any and all previous publications effective September 29, 2020 | MW-Shaftwall ASW Catalog | © WARE Industries, Inc. 2020

# SHAFTWALL INSTALLATION INSTRUCTIONS

1. Lay out per construction drawings. Secure Tabbed Track as perimeter framing on floor and plumb to ceiling and sides. Attach with suitable fasteners, spaced not more than 24" o.c.
2. Plan the stud layout 24" o.c. and adjust the spacing at either end so that the terminal stud will not fall closer than 8" from the end.
3. Erect the first 1" Liner Board panel, cut 3/4" less than the total height of the framed section. Plumb the panel flush against the web of the Tabbed Track and secure with 1-5/8" Type S screws 24" o.c. or bend out tabs in Tabbed Track to secure panels in place.
4. Insert a MarinoWARE CT Stud, cut 3/4" less than the overall height, into the top and bottom Tabbed Tracks and fit tightly over the previously installed 1" panel.
5. Install the next 1" Liner Board panel inside the Tabbed Tracks and within the tabs of the CT Stud. Note that the edges of the panel may be beveled to help guide the panel into the slotted and tabbed section of the stud.
6. Progressively install succeeding studs and panels as described above until the wall section is enclosed. The final panel section may be secured with 1-5/8" Type S screws or tabs from the Tabbed Track at 24" o.c.
7. For doors, ducts or other large penetrations or openings, install Jamb Track as perimeter framing. Use 20-gauge track with a 3" back leg for elevator doors and block cavity with 12" wide gypsum board filler strips when required by Door Frame Manufacturer.
8. 1" Liner Board panels may be abutted, spliced or stacked within the cavity. The shorter panel should be minimum 2" long or longer to engage two stud tabs on each panel edge. Joints of adjacent panels should be alternately stacked or staggered to prevent a continuous horizontal joint. NOTE: Warnock Hersey fire tests were conducted without back blocking of Liner Board joints.
9. Finished one side system. Install the first layer of 1/2" UL Classified gypsum board horizontally with 1" Type S or S-12 screws spaced 24" o.c. (5/8" Type X gypsum board may be used in lieu of 1/2" Type C gypsum board, if desired). The horizontal joints should be offset from any splice joints in the Liner Board panels by at least 12". The face layer may be installed either horizontally or vertically with 1-5/8" Type S or S-12 screws spaced 8" o.c. All edge and end joints should be offset from the base layer by 24" o.c.
10. Finished both sides system. Each side may be installed either horizontally or vertically with 1" Type S or S-12 screws spaced 8" o.c. Offset edges and ends on opposite sides 24" o.c.
11. When used as HVAC ducts, consult with HVAC engineer regarding level of caulking and sealant required. All joints on face layers are to be taped and finished and fasteners finished with joint compound meeting ASTM C 475. All penetration openings are to be filled with approved fire stopping sealants.

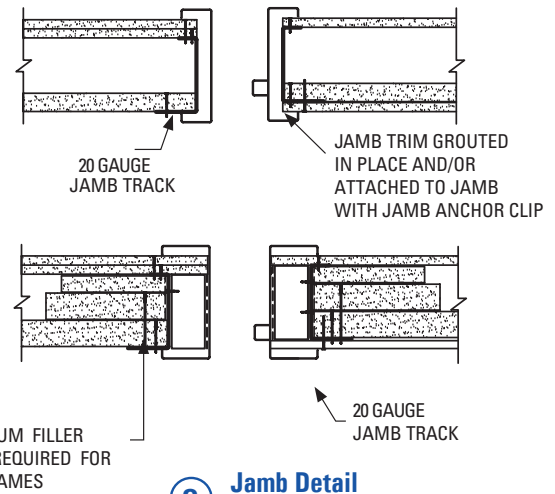
# SHAFTWALL SYSTEMS SUGGESTED CONSTRUCTION DETAILS



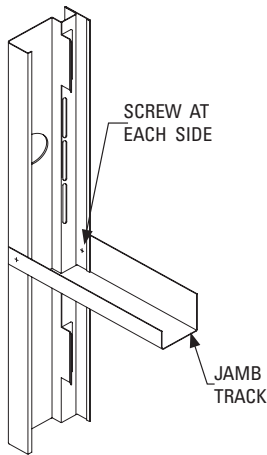
**NOTES:**

- A.) FRAMING AT ELEVATOR DOOR SHALL BE MINIMUM 4" CT-STUDS AND RUNNERS 20 GAUGE.
- B.) FOR DOOR GREATER THAN 5' WIDE AND 10' HIGH, IT NEEDS TO BE INVESTIGATED SEPARATELY.

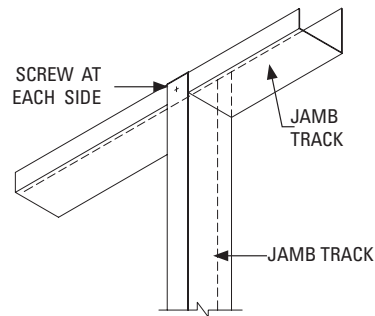
## 1 Door Frame Elevation



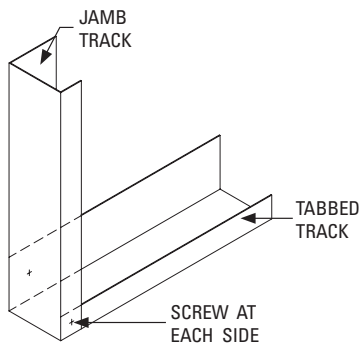
## 2 Jamb Detail Section A-A



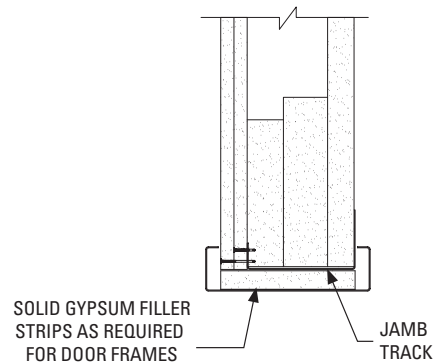
## 3 Header Detail Detail A



## 4 Header Detail Detail B



## 5 Jamb Detail Detail C



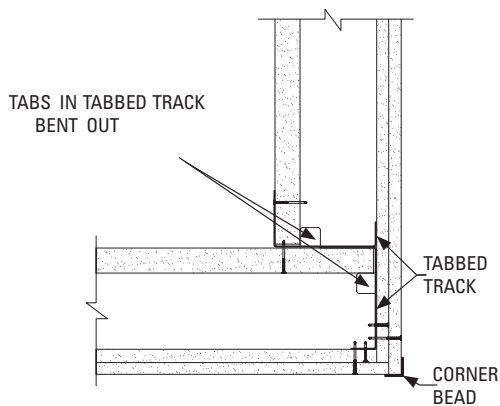
## 6 Header Detail Section B-B

For more information, please contact MarinoWARE® Technical Services at 866-545-1545.

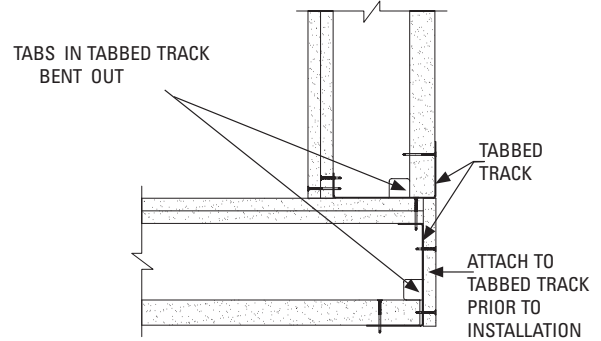
This technical information reflects the most current information available and supersedes any and all previous publications effective September 29, 2020 | MW-Shaftwall ASW Catalog | © WARE Industries, Inc. 2020



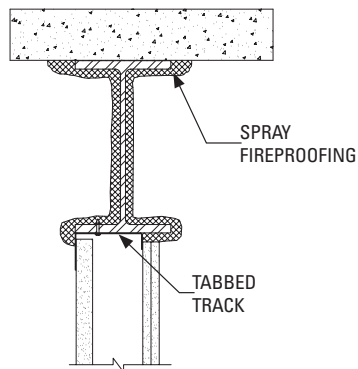
# SHAFTWALL SYSTEMS SUGGESTED CONSTRUCTION DETAILS



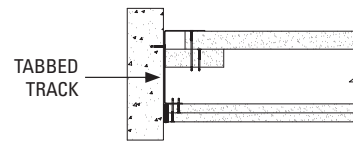
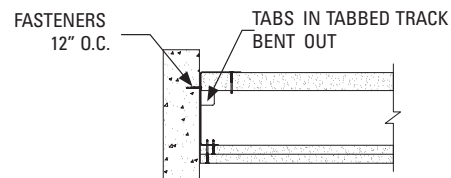
**7** Outside Corner Detail



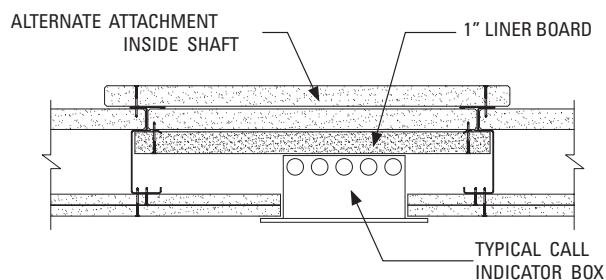
**8** Inside Corner Detail



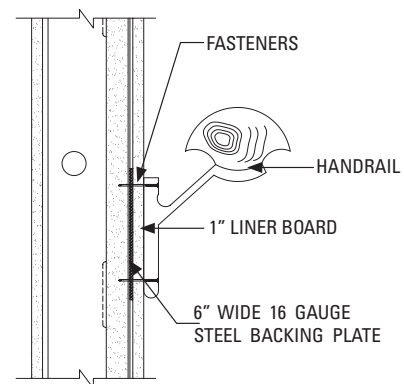
**9** Steel Beam Detail



**10** End of Wall Detail



**11** Call Box/Outlet Box/Mail Chute



**12** Handrail Connection

For more information, please contact MarinoWARE® Technical Services at 866-545-1545.

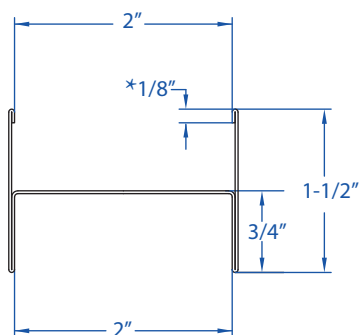
This technical information reflects the most current information available and supersedes any and all previous publications effective September 29, 2020 | MW-Shaftwall ASW Catalog | © WARE Industries, Inc. 2020

# H-STUD, C-RUNNER, ALUMINUM BREAKAWAY CLIP & ASSEMBLY DETAILS

## Area Separation Walls

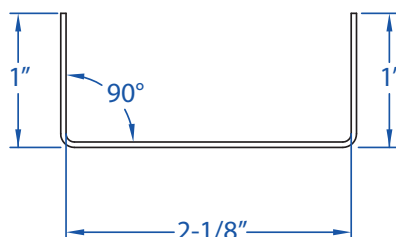
The MarinoWARE Area Separation Wall is constructed once the framing for one multistory unit is complete and prior to the construction of the interior framing on the adjacent unit. The area separation wall is constructed a minimum 3/4" away from the adjacent framing, which is typically constructed from wood. In many cases the area separation wall is positioned 1" away from the wall framing to accommodate the 1" Liner Board panels used as fire blocking between the floor levels.

PHYSICAL PROPERTIES						SECTION PROPERTIES					
Model No.	Web	GA.	Mil	Design Thickness	Coating	Weight (lb/ft)	Area (in <sup>2</sup> )	I <sub>x</sub>	S <sub>x</sub>	I <sub>y</sub>	S <sub>y</sub>
216HS25	2"	25	18	0.0188"	G40	0.4310	0.1270	0.0990	0.0995	0.0147	0.0176
216HS20	2"	20	30	0.0312"	G40	0.7150	0.2100	0.1681	0.1582	0.0243	0.0289

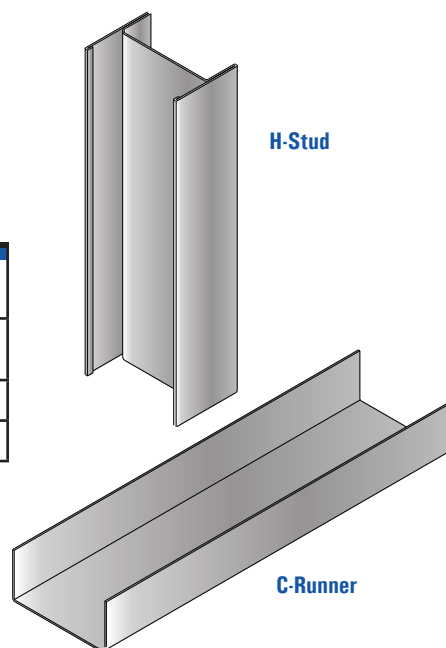


**H-Stud**

\* - 20 Gauge Not Hemmed



**C-Runner**



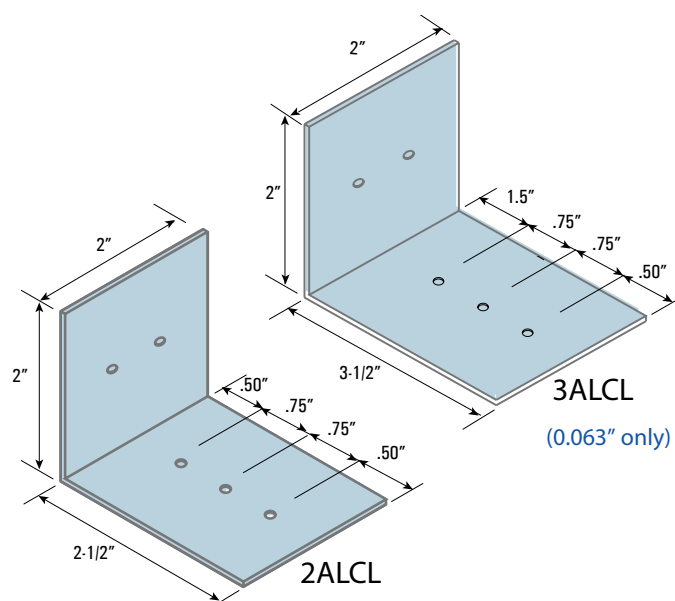
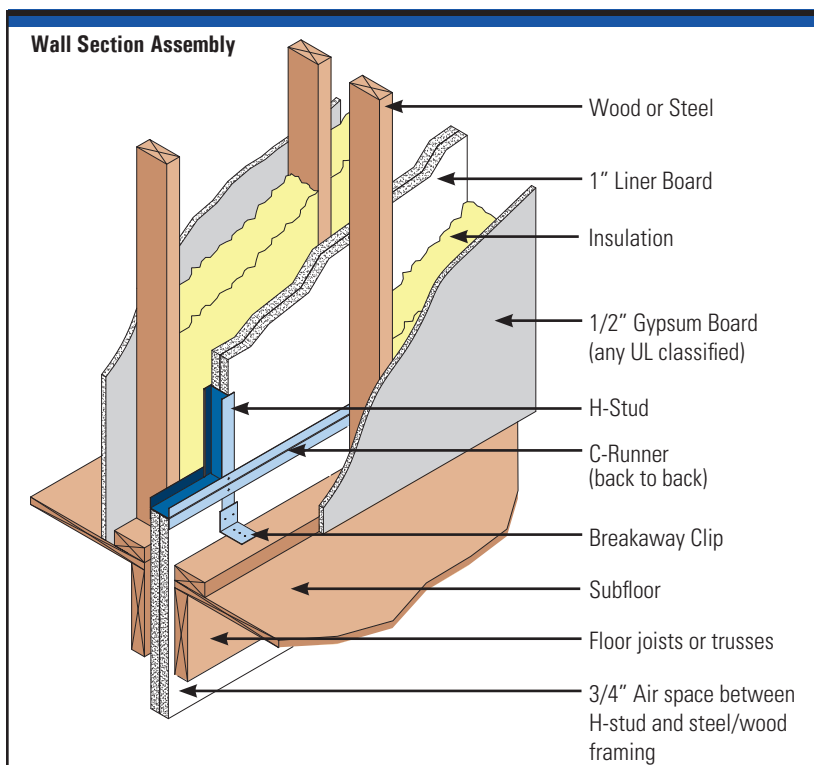
**H-Stud**

**C-Runner**

## Breakaway Clip (BA)

BA clips allow a fire damaged structure to collapse while permitting the fire wall to remain in place, protecting adjacent units.

- For use with Area Separation Wall Systems
- Aluminum .063" or .049"
- Designed to melt under extreme heat



(available in 0.049"  
or 0.063" thickness)

For more information, please contact MarinoWARE® Technical Services at 866-545-1545.

This technical information reflects the most current information available and supersedes any and all previous publications effective September 29, 2020 | MW-Shaftwall ASW Catalog | © WARE Industries, Inc. 2020

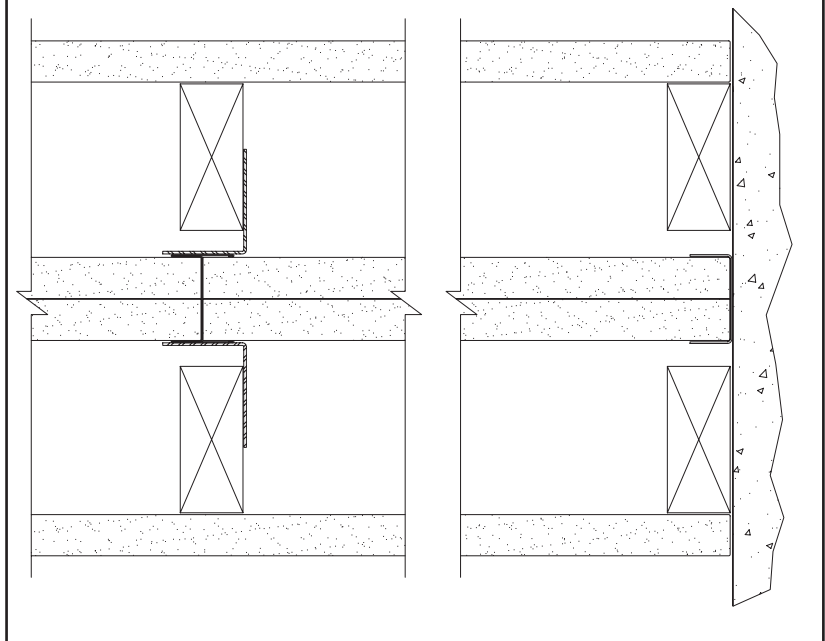
# AREA SEPARATION WALL FIRE & SOUND RATING SUMMARY

## Area Separation Wall Test Data

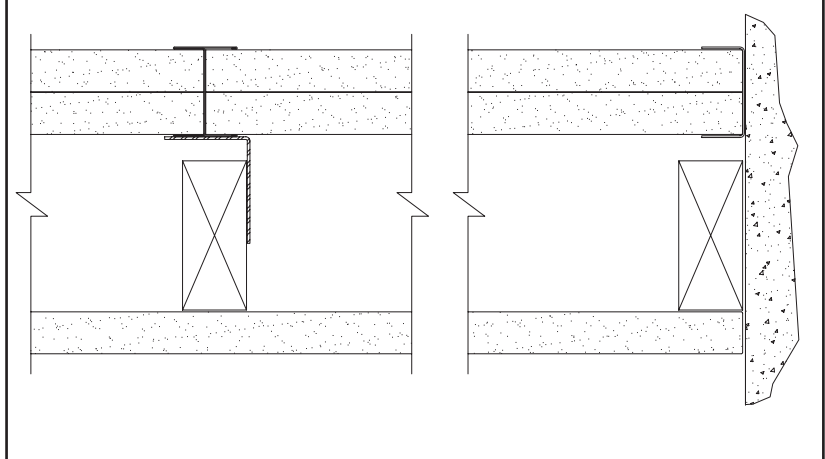
### Fire Components:

- Any UL Classified 1/2" gypsum wallboard, oriented vertically or horizontally to wood framing. One (1) layer each side of assembly.
- Wood Framing - Nominal: 2" x 4" wood framing, spaced 24" oc maximum and spaced 3/4" from shaftwall surface -OR-
- Steel Framing - Bearing: 3-1/2" min. depth x 1-5/8" min. flange 20 gauge stud, spaced 24" o.c. maximum and 3/4" from shaftwall surface.
- Steel Framing - Non Bearing: 3-5/8" min. depth x 1-1/4" min. flange 25 gauge stud, spaced 24" o.c. maximum and 3/4" from shaftwall surface.
- 2" long aluminum breakaway clip attached to wood or steel framing.
- Any UL Classified 1" Type X Gypsum Linear boards. Two boards back-to-back are inserted against the web of the track and into the recess of the studs.
- Marino\WARE H Stud – 2", 25 Gauge .0179" (18 mil) – 33 ksi

**2 Hour Non-Bearing Area Separation Wall Assembly**



**2 Hour Non-Bearing Area Separation Wall Assembly**



Generic UL Assemblies for H-Stud			NYC Approval
UL U336	UL U366	UL U375	MEA 161-05-M
UL U347	UL U373	UL U388	
		UL W454	

For more information, please contact Marino\WARE® Technical Services at 866-545-1545.

This technical information reflects the most current information available and supersedes any and all previous publications effective September 29, 2020 | MW-Shaftwall ASW Catalog | © WARE Industries, Inc. 2020

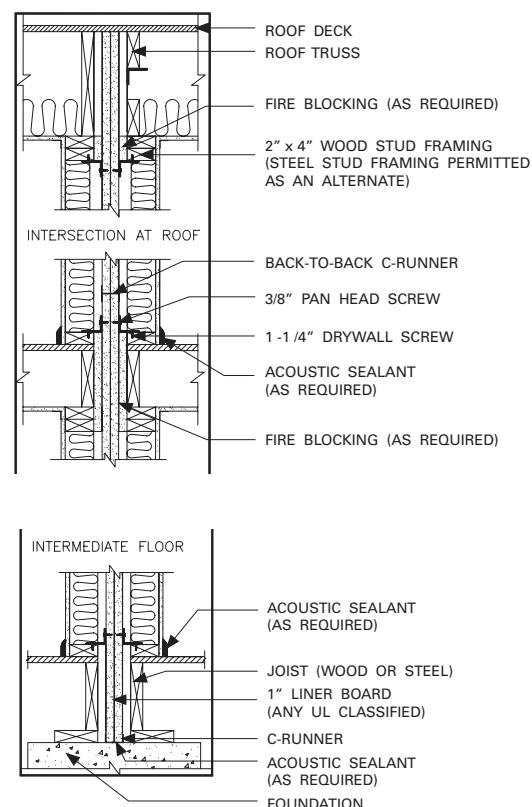
# INSTALLATION INSTRUCTIONS & DETAILS

## Erecting the 2" Area Separation Wall

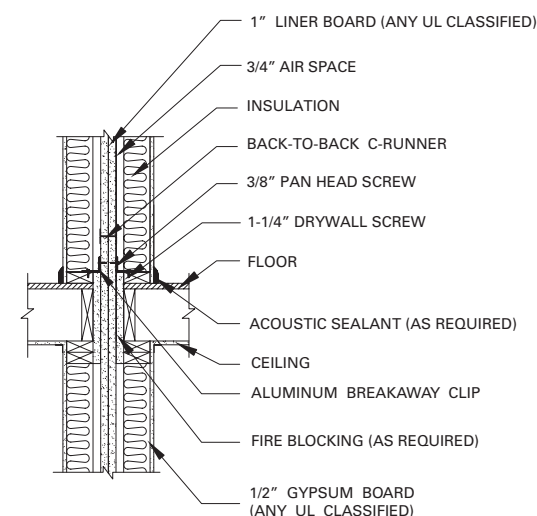
1. Position 2" MarinoWARE C Runner a minimum 3/4" from the framed wall of the adjacent unit. Fasten C Runner to foundation with power-driven fasteners spaced a maximum of 24" o.c. When specified, apply a minimum 1/4" of acoustical sealant under the C-Runner to maximize acoustical privacy. Run the C-Runner to the end of the foundation. In the case of offset units, run the C-Runner to the end of the offset unit.
2. Install MarinoWARE H Studs and 1" Liner Board to a maximum height of 2' above the first floor line. Install two 1" Liner Board panels vertically into the C Runner at one end of the wall. Install the H Stud over the double beveled edges of the Liner Board panels and continue alternately until the wall has reached the opposite end of the foundation. Terminate the wall using a C-Runner. The vertical C Runners at each end of the wall should be attached in the corners to the horizontal sections of C-Runner using a 3/8" pan head screw.
3. Cap the first section of the area separation wall with a C-Runner and attach to the vertical C-Runner in the corners using a 3/8" pan head screw.
4. Aluminum breakaway clips span the minimum 3/4" airspace and provide a fusible link between the H Studs and the adjacent wall framing. Attach the aluminum breakaway clips to the flange of the H Stud using one 3/8" pan head screw and to the adjacent wood framing using one 1" drywall screw. The aluminum break away clips are typically located vertically at each floor level (10'-0" o.c.) and horizontally on every H-Stud (24" o.c.). When the total height of the area separation wall exceeds 20' - 0", aluminum breakaway clips shall be installed every 5'-0" for the lower 20'-0" and every 10'-0" for the upper 30'-0" of the wall assembly. Aluminum breakaway clips are installed on both sides of the area separation wall.
5. Fire blocking is installed on both sides of the area separation wall at each floor level as defined in the IBC.
6. To continue the wall, install a C Runner over the C Runner used to cap the lower section, placed back to back and attached together with 3/8" pan head screws spaced 24" o.c.
7. The support walls located adjacent to, and on each side of the solid 2" area separation wall, protect and maintain the required 3/4" air space. These support walls offer increased acoustical privacy and provide necessary aesthetics. They can be designed as load bearing. These walls can readily accommodate code compliant electrical and plumbing systems. These systems should not impede the required 3/4" air space. Apply acoustical sealant around penetrations for maximum acoustical privacy.
8. Once the 2" area separation wall is erected, construction of the adjacent interior wall framing can begin. Aluminum Breakaway clip and fire blocking installation is identical for both sides of the 2" area separation wall.

## Suggested details for Area Separation Systems

### Full Wall Detail



### Intermediate Floor Detail



For more information, please contact MarinoWARE® Technical Services at 866-545-1545.

This technical information reflects the most current information available and supersedes any and all previous publications effective September 29, 2020 | MW-Shaftwall ASW Catalog | © WARE Industries, Inc. 2020



# ARCHITECTURAL SPECIFICATIONS

## PART 1 – GENERAL

### 1.0 Description of Work

Types of Work: The types of work herein specified include, but are not limited to, CT Shaftwall, CT Stairwall and H-Stud Area Separation Wall System.

### 1.1 Quality Assurance

- A. Fire Resistance Ratings: Where shaftwall/stairwall systems with fire resistance ratings are indicated, provide UL Classified Liner Board.
- B. Provide fire resistance rated assemblies identical to those indicated by reference to WHI (Warnock Hersey International) numbers or in listing of other testing agencies acceptable to authorities having jurisdiction.

### 1.2 Qualifications

All shaftwall/stairwall framing materials shall be manufactured by MarinoWARE. All materials shall be installed in accordance with printed installation instructions as required by the testing agency.

### 1.3 Submittals

Product Data: Submit MarinoWARE's descriptive literature for each shaftwall/stairwall and Area Separation Wall component indicating materials, dimensions, and other data required to show compliance with the specifications.

### 1.4 Delivery, Storage and Handling

- C. Deliver materials in original packages, containers or bundles bearing MarinoWARE's brand name and identification.
- D. Store materials level, inside, under cover. Keep materials dry and protect from weather and damage from construction operations and other causes.
- E. Handle system components to prevent damage to edges, ends or surfaces. Protect metal accessories, framing and trim from bending and damage.

## PART 2 – PRODUCTS

### 2.0 Materials

#### A. Metal framing:

##### 1. CT Studs:

- a. Galvanized steel, conforming to ASTM C 645 manufactured by MarinoWARE.
- b. Width: 2½", 4" and 6"
- c. Gauge: 18, 20 and 25 (40 ksi)

##### 2. Tabbed Track and Jamb Track:

- a. Galvanized steel, conforming to ASTM C 645 manufactured by MarinoWARE.
- b. Width: 2½", 4" and 6"
- c. Gauge: 20 at elevator doors and masonry cavities and 25 standard elsewhere. (40 ksi)

##### 3. H-Stud and C-Runner:

- a. Galvanized steel, conforming to ASTM C 645 manufactured by MarinoWARE.
- b. Width: 2"
- c. Gauge: 25, 20 (33 ksi)
- d. Mill: 18, 30

- B. Fasteners: For 25-gauge framing – Type S screws.  
For 20-gauge framing – Type S-12 screws.

## PART 3 – EXECUTION

### 3.0 Installation

- A. General: Follow MarinoWARE recommendations for installation of metal framing.

### 3.1 Installation of Framing (Shaftwall/Stairwall)

- A. Installation of Tabbed Track, CT Studs and 1" Liner Board panels.

1. Layout shaftwall in locations indicated on construction drawings.
2. Anchor Tabbed Track perimeter framing at abutting horizontal and vertical construction.
3. Anchor with approved fasteners spaced maximum 24" o.c.
4. Apply non-hardening, flexible sealant in a continuous application at the perimeter.
5. Space CT Studs at 24" o.c. Adjust the spacing at ends of shaftwall construction so end studs are minimum 8" from the ends.
6. Install the first Liner Board panel. The panel length shall be ¾" less than the total height of the framed section. Plumb the panel against the web of the Tabbed Track and bend out tabs in Tabbed Track to secure the panel in place.
7. Insert a CT Stud into the top and bottom Tabbed Track and fit tightly over the previously installed 1" panel. Allow equal clearance between track and stud at top and bottom Tabbed Track. The stud length shall be ¾" less than the total height of the framed section.
8. Install the second 1" Liner Board panel inside the Tabbed Track and within the tabs of the CT Studs.
9. Install succeeding studs and panels in the same manner as described for the first and second panels until the wall section is complete.
10. Anchor the final panel section at 12" o.c. with tabs from the Tabbed Track.
11. Where wall heights exceed the standard or available length of the Liner Board panels, the panels shall be cut and stacked with joints occurring within the top or bottom third of the wall height. The shorter panels shall be minimum 24" long and of sufficient length to engage 2 studs.

12. For doors, ducts or other large penetrations or openings, install Jamb Track as perimeter framing. Use 20-gauge track with a 3" back leg for elevator doors and block cavity. Install 12" wide gypsum filler strips for doors exceeding 7'-0" height.

### 3.2 Installation of Framing (Area Separation Wall)

1. Foundation: Position 2" C-Runner at floor and attach securely to foundation at ends and 24" o.c. Caulk under runner at foundation with min. 1/4" bead of acoustical sealant when specified to reduce noise transmission.
2. First Floor: Install H-Studs and insert Liner Board. Attach two thicknesses of 1" Liner Board vertically in C-Runner with long edges in H-Stud. Continue installing H-Studs and Liner Board alternately until wall is complete. Attach horizontal C-Runner to top of Liner Board, fastening flanges of C-Runner at all corners on both sides of Liner Board with 3/8" drill point screws.
3. Intermediate Floors: Attach C-Runner to C-Runner cap on wall below, staggering end joints at least 12". Fasten C-Runner together using double 3/8" screws at ends and 24" o.c. Fasten H-Studs to adjacent framing with aluminum breakaway clips. Attach breakaway clips to H-Stud with one 3/8" drill point screw and to adjacent wood framing with 11/4" drywall screw. Install fire blocking between solid wall system and adjacent framing at floor lines, bottom of truss line and any other locations according to code requirements.
4. Roof: Cut Liner Board and H-Studs to follow roof pitch. Fasten H-Studs to framing with an aluminum breakaway clip.

### 3.3 Installation of Gypsum Board

- A. Shaftwall/Stairwall system finished one side:
  1. Install gypsum board in a double layer on one side, either horizontally or vertically.
  2. Install the first layer of gypsum board horizontally with approved fasteners spaced 24" o.c. and 3" from all edges.
  3. Offset the horizontal joints minimum 12" from any splice joints in the Liner Board panels.
  4. Install the face layer of gypsum board parallel to the framing with approved fasteners spaced minimum 12" o.c. and 6" from all edges.
  5. Offset edge and end joints from the base layer at least 24".
- B. Stairwall/Stairwall System, Finished Both Sides:
  1. Install gypsum board on both sides, either horizontally or vertically.
  2. Attach gypsum board with approved fasteners spaced 12" o.c. and 6" from all edges.

3. Offset edges and ends of gypsum board on opposite sides minimum 24".

### 3.4 Finishing

- A. Apply a non-hardening, flexible sealant continuous at all perimeter edges, abutments with dissimilar materials and penetrations in the facing layer.
- B. Tape and finish all joints at face layers with tape and joint compound and finish fastener heads with joint compound meeting ASTM C 475.

### 3.5 Protection of Work

- A. Protect shaftwall work from damage and deterioration until date of substantial completion
- B. Repair damaged work to be indistinguishable from adjacent work. Replace work that cannot be repaired as required.

### Limitations:

- Non-load-bearing; not to be used as an unlined air supply duct.
- Not designed for exposure to constant high-moisture conditions or direct water.
- Elevator door assemblies require support independent of shaftwall partitions.
- Good construction practice calls for partition control joints to coincide with that of the building structure.
- Limiting loads and heights not to exceed design specifications or data provided herein or by metal component supplier.
- Provide flexible sealant/caulk at partition perimeters and penetrations to avoid air leakage/whistling and dust collection.





**MARINO\*WARE®**

**100% American-Owned and Operated | [marinoware.com](http://marinoware.com)**

★ **NEW JERSEY FACILITY**

400 Metuchen Road  
South Plainfield, NJ 07080  
(800) 627-4661  
(908) 757-9000  
(908) 412-1442 FAX

★ **GEORGIA FACILITY**

777 Greenbelt Parkway  
Griffin, GA 30223  
(800) 504-8199  
(678) 688-1312  
(678) 688-1379 FAX

★ **INDIANA FACILITY**

4245 Railroad Avenue  
East Chicago, IN 46312  
(866) 636-6002  
(219) 378-7100  
(219) 378-7106 FAX

★ **NEW YORK SALES OFFICE**

51 John Street, Ste. 1  
Babylon, NY 11702  
(800) 627-4667  
(631) 691-2200  
(631) 691-1492 FAX

★ **ENGINEERING OFFICE**

100 Hendrick Drive, Suite 200  
McDonough, GA 30253  
(866) 545-1545  
(678) 688-7780  
(770) 507-2605 FAX

**For more information, please contact Marino|WARE® Technical Services at 866.545.1545**

This technical information reflects the most current information available and supersedes any and all previous publications effective September 29, 2020 | MW-Shaftwall ASW Catalog | © WARE Industries, Inc. 2020