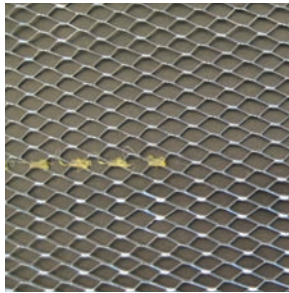


PAPERBACKED DIAMOND MESH LATH

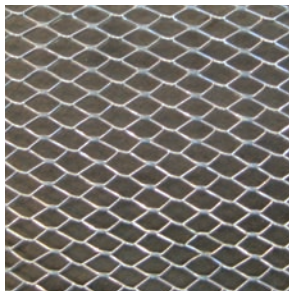


USE: Asphalt paper is factory bonded to the back. The paper conforms to Federal Specification UU-B-790A, type 1, grade D, style 2.

SIZE:
27" x 97" (686 mm x 2440 mm)
MATERIAL:
G-60

Approx. Lath Weight		Finish Galv.	No. Pcs.	Bundle			
lbs/yd ²	(kg/m ²)			Weight		Area	
				lbs.	(kg)	yd ²	(m ²)
1.75	(0.9)	✓	10	40	(18.2)	20	(16.7)
2.50	(1.4)	✓	10	55	(25.0)	20	(16.7)
3.40	(1.8)	✓	10	73	(33.2)	20	(16.7)

PAPERBACKED SELF-FURRING DIAMOND MESH LATH



USE: Uses same mesh configuration as Diamond Mesh Lath but made with 1/4" dimple indentations spaced 1-1/2" o.c. each way. Used as exterior stucco base, column fireproofing and re-plastering over old surfaces. Available in galvanized only. Paper conforms to Federal Specification UU-B-790A, type 1, grade D, style 2.

SIZE:
27" x 97" (686 mm x 2440 mm)
MATERIAL:
G-60

Approx. Lath Weight		Finish Galv.	No. Pcs.	Bundle			
lbs/yd ²	(kg/m ²)			Weight		Area	
				lbs.	(kg)	yd ²	(m ²)
1.75	(0.9)	✓	10	40	(18.2)	20	(16.7)
2.50	(1.4)	✓	10	55	(25.0)	20	(16.7)
3.40	(1.8)	✓	10	73	(33.2)	20	(16.7)

PAPERBACKED V-GROOVE MESH LATH



USE: Same as V-Groove with asphalt paper factory bonded to the back. Paper conforms to Federal Specification UU-B-790A, type 1, grade D, style 2.

SIZE:
27" x 97" (686 mm x 2440 mm)
MATERIAL:
G-60

Approx. Lath Weight		Finish Galv.	No. Pcs.	Bundle			
lbs/yd ²	(kg/m ²)			Weight		Area	
				lbs.	(kg)	yd ²	(m ²)
1.75	(0.9)	✓	10	40	(18.2)	20	(16.7)
2.50	(1.4)	✓	10	55	(25.0)	20	(16.7)
3.40	(1.8)	✓	10	73	(33.2)	20	(16.7)