

## Design/System/Construction/Assembly Usage Disclaimer

- Authorities Having Jurisdiction should be consulted in all cases as to the particular requirements covering the installation and use of UL Certified products, equipment, system, devices, and materials.
- Authorities Having Jurisdiction should be consulted before construction.
- Fire resistance assemblies and products are developed by the design submitter and have been investigated by UL for compliance with applicable requirements. The published information cannot always address every construction nuance encountered in the field.
- When field issues arise, it is recommended the first contact for assistance be the technical service staff provided by the product manufacturer noted for the design. Users of fire resistance assemblies are advised to consult the general Guide Information for each product category and each group of assemblies. The Guide Information includes specifics concerning alternate materials and alternate methods of construction.
- Only products which bear UL's Mark are considered Certified.

BXUV – Fire Resistance Ratings – ANSI/UL 263 Certified for United States

BXUV7 – Fire Resistance Ratings – CAN/ULC-S101 Certified for Canada

[See General Information for Fire-resistance Ratings – ANSI/UL 263 Certified for United States Design Criteria and Allowable Variances](#)

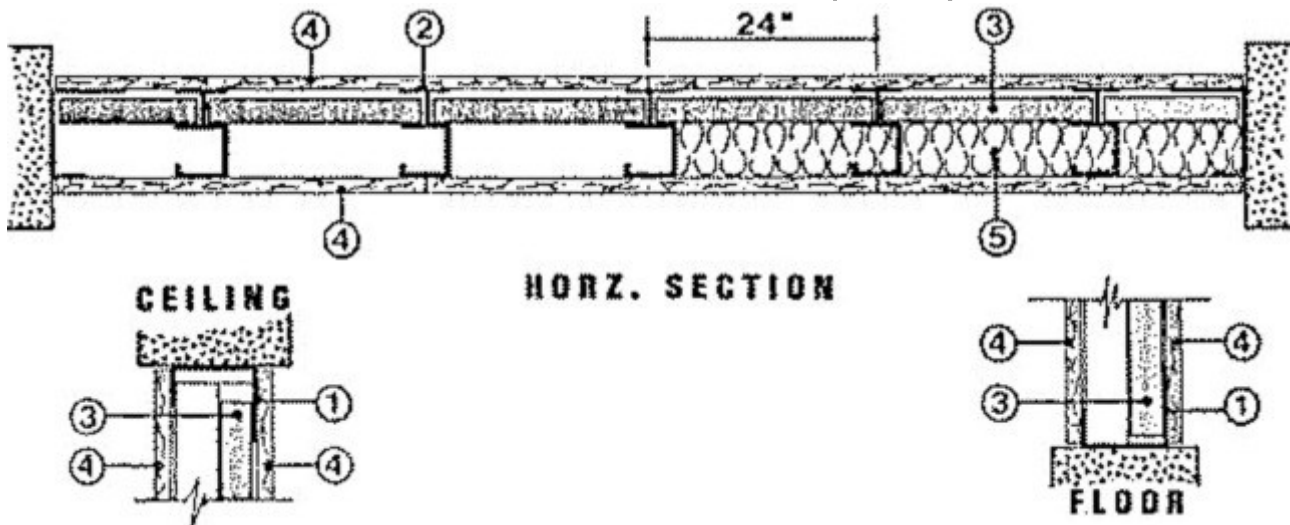
[See General Information for Fire Resistance Ratings – CAN/ULC-S101 Certified for Canada Design Criteria and Allowable Variances](#)

### Design No. V472

November 14, 2025

#### Nonbearing Wall Rating – 2 Hr

\* Indicates such products shall bear the UL or cUL Certification Mark for jurisdictions employing the UL or cUL Certification (such as Canada), respectively.



1. **Floor and Ceiling Runners** — "J" -shaped, 2-1/2 in. wide with unequal legs of 1 in. and 2-1/4 in., fabricated from 25 MSG galv steel. Runners attached to structural supports with steel fasteners located not more than 2 in. from ends and not more than 24 in. OC.

2. **Steel Studs** — "C-T" or "C-H" shaped studs 1-5/8 in. wide by 2-1/2 in. deep, fabricated from 25 MSG galv steel. Cut to lengths 3/4 in. less than floor to ceiling height and spaced 24 in. or 600 mm OC.

3. **Gypsum Board\*** — 1 in. thick gypsum wallboard liner panels, supplied in nom. 24 in. or 600 mm (for metric spacing) widths. Panels cut 1 in. less in length than floor to ceiling height. Vertical edges of the panels inserted into "T" -shaped section of C-T studs or "H" section of the C-H studs. Shaftliner held in place by tabs of the steel studs, spaced 24 in. OC.

**CERTAINTED GYPSUM INC** — Type LGFCSL

4. **Gypsum Board\*** — 1/2 or 5/8 in. thick, 4 ft wide, applied horizontally or vertically and attached to studs and runners with 1 in. long Type S steel screws spaced at 12 in. OC. Vertical joints are offset one stud space each side. Horizontal joints are staggered a minimum 24 in. from each side. Outer layer joints covered with paper tape and two coats of joint compound. Exposed screw heads covered with two coats of joint compound. Horizontal joints need not be back be steel framing.

**CERTAINTED GYPSUM INC** — 1/2 in. Type C, 5/8 in. Type C or Type X-1

5. **Batts and Blankets\*** — (optional) — Mineral wool or glass fiber batts partially or completely filling stud cavity. Any mineral wool or glass fiber batt material bearing the UL Classification Marking as to Fire Resistance.

5A. **Fiber, Sprayed\*** — As an alternate to Batts and Blankets (Item 5) — (100% Borate Formulation) — Spray applied cellulose material. The fiber is applied with water to completely fill the enclosed cavity in accordance with the application instructions supplied with the product with a nominal dry density of 2.7 lb/ft<sup>3</sup>. Alternate Application Method: The fiber is applied without water or adhesive at a nominal dry density of 3.5 lb/ft<sup>3</sup>, in accordance with the application instructions supplied with the product.

**Applegate Greenfiber Acquisition LLC** — Insulmax and SANCTUARY for use with wet or dry application.

5B. **Fiber, Sprayed\*** — As an alternate to Batts and Blankets (Item 5) and Item 5A - Spray applied cellulose insulation material. The fiber is applied with water to interior surfaces in accordance with the application instructions supplied with the product. Applied to completely fill the enclosed cavity. Minimum dry density of 4.3 pounds per cubic ft.

**NU-WOOL CO INC** — Cellulose Insulation

\* Indicates such products shall bear the UL or cUL Certification Mark for jurisdictions employing the UL or cUL Certification (such as Canada), respectively.

The appearance of a company's name or product in this database does not in itself assure that products so identified have been manufactured under UL Solutions' Follow - Up Service. Only those products bearing the UL Mark should be considered to be Certified and covered under UL Solutions' Follow - Up Service. Always look for the Mark on the product.

UL Solutions permits the reproduction of the material contained in Product iQ subject to the following conditions: 1. The Guide Information, Assemblies, Constructions, Designs, Systems, and/or Certifications (files) must be presented in their entirety and in a non-misleading manner, without any manipulation of the data (or drawings). 2. The statement "Reprinted from Product iQ with permission from UL Solutions" must appear adjacent to the extracted material. In addition, the reprinted material must include a copyright notice in the following format: "©2026 UL LLC."