



DEPARTMENT OF REGULATORY AND ECONOMIC RESOURCES
BOARD AND CODE ADMINISTRATION DIVISION

MIAMI-DADE COUNTY
PRODUCT CONTROL SECTION
11805 SW 26 Street, Room 208
Miami, Florida 33175-2474
T (786) 315-2590 F (786) 315-2599

www.miamidade.gov/economy

NOTICE OF ACCEPTANCE (NOA)

International Materials, Inc. dba Intermat, Inc.
2045 Placentia Avenue
Costa Mesa, CA 92627

SCOPE:

This NOA is being issued under the applicable rules and regulations governing the use of construction materials. The documentation submitted has been reviewed and accepted by Miami-Dade County RER-Product Control Section to be used in Miami Dade County and other areas where allowed by the Authority Having Jurisdiction (AHJ).

This NOA shall not be valid after the expiration date stated below. The Miami-Dade County Product Control Section (In Miami Dade County) and/or the AHJ (in areas other than Miami Dade County) reserve the right to have this product or material tested for quality assurance purposes. If this product or material fails to perform in the accepted manner, the manufacturer will incur the expense of such testing and the AHJ may immediately revoke, modify, or suspend the use of such product or material within their jurisdiction. RER reserves the right to revoke this acceptance, if it is determined by Miami-Dade County Product Control Section that this product or material fails to meet the requirements of the applicable building code.

This product is approved as described herein, and has been designed to comply with the High Velocity Hurricane Zone of the Florida Building Code.

DESCRIPTION: Sure-Board Wall Sheathing System

APPROVAL DOCUMENT: Drawing No. 19-003, titled "Sure-Board Wall Sheathing System", sheets 1 through 5 of 5, prepared by Tilteco, Inc., dated January 10, 2019, signed and sealed by Walter A. Tillit Jr., P.E., on February 08, 2019 bearing the Miami-Dade County Product Control Approval stamp with the Notice of Acceptance number and the approval date by the Miami-Dade County Product Control Section.

MISSILE IMPACT RATING: Large and Small Missile Impact Resistant

LABELING: Each panel shall bear a permanent label with the manufacturer's name or logo, city, state and the following statement: "Miami-Dade County Product Control Approved", unless otherwise noted herein.

RENEWAL of this NOA shall be considered after a renewal application has been filed and there has been no change in the applicable building code negatively affecting the performance of this product.

TERMINATION of this NOA will occur after the expiration date or if there has been a revision or change in the materials, use, and/or manufacture of the product or process. Misuse of this NOA as an endorsement of any product, for sales, advertising or any other purposes shall automatically terminate this NOA. Failure to comply with any section of this NOA shall be cause for termination and removal of NOA.

ADVERTISEMENT: The NOA number preceded by the words Miami-Dade County, Florida, and followed by the expiration date may be displayed in advertising literature. If any portion of the NOA is displayed, then it shall be done in its entirety.

INSPECTION: A copy of this entire NOA shall be provided to the user by the manufacturer or its distributors and shall be available for inspection at the job site at the request of the Building Official. **An original signed and sealed company letter from Intermat, Inc. is required, providing that the Sure-Board Wall Sheathing System was purchased from them in order for this NOA to be valid on any job.**

This NOA consists of this page 1, evidence submitted pages E-1, E-2, E-3, E-4 & E-5 as well as approval document mentioned above.

The submitted documentation was reviewed by **Helmy A. Makar, P.E., M.S.**



Helmy A. Makar
06/13/2019

NOA No. 19-0213.08
Expiration Date: 06/13/2024
Approval Date: 06/13/2019

International Materials, Inc. dba Intermat, Inc.

NOTICE OF ACCEPTANCE: EVIDENCE SUBMITTED

1. EVIDENCE SUBMITTED UNDER PREVIOUS APPROVAL #03-1015.08

A. DRAWINGS

1. *Drawing No. 02-385, titled " Wall Panel System ", sheets 1 through 10 of 10, prepared by Tilteco, Inc., dated July 11, 2002 with last revision #1 dated January 7, 2004, signed and sealed by Walter A. Tillit Jr., P.E.*

B. TEST

1. *Test report on Large Missile Impact test, Cyclic Wind Pressure test and Uniform Static Air Pressure test and Air & Water Infiltration tests and ASTM E 72-98 on Composite Wall Panels over Galvanized Steel Studs, prepared by American Test Lab of South Florida, report No. 0506.01-03, dated September 5, 2003, signed and sealed by William R. Mehner, P.E. and Henry Hattem, PE.*
2. *Addendum to report No. 0506.01-03, dated December 15, 2003, signed and sealed by William R. Mehner, P.E. and Henry Hattem, PE.*

C. CALCULATIONS

1. *Panel allowable calculation and Anchors' verification prepared by Walter A. Tillit Jr., P.E. dated august 27, 2003 signed and sealed by Walter A Tilit Jr., PE.*

D. QUALITY ASSURANCE

1. *By Miami-Dade County Building Code Compliance Office.*

E. MATERIAL CERTIFICATION

1. *Tensile test report of metal panel, prepared by Q. C. Metallurgical, Inc., dated August 4, 2003, signed and sealed by Frank E. Grate, Jr., P E.*
2. *Copy of N.O.A. # 00-1114.05.*

2. EVIDENCE SUBMITTED UNDER PREVIOUS APPROVAL # 05-0929.09

A. DRAWINGS

1. *Drawing No. 05-291, titled " Wall Panel System ", sheets 1 through 10 of 10, prepared by Tilteco, Inc., dated September 16, 2005 with last revision #1 dated September 16, 2005, signed and sealed by Walter A. Tillit Jr., P.E.*

B. TEST

1. *None.*

C. CALCULATIONS

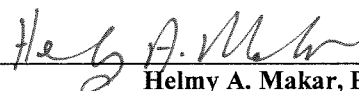
1. *Panel Anchors' verification per FBC 2004 edition prepared by Walter A. Tillit Jr., P.E. dated September 21, 2005 signed and sealed by Walter A Tilit Jr., PE.*

D. QUALITY ASSURANCE

1. *By Miami-Dade County Building Code Compliance Office.*

E. MATERIAL CERTIFICATION

1. *None.*



Helmy A. Makar, P.E., M.S.
Product Control Section Supervisor

NOA No. 19-0213.08

Expiration Date: 06/13/2024

Approval Date: 06/13/2019

International Materials, Inc. dba Intermat, Inc.

NOTICE OF ACCEPTANCE: EVIDENCE SUBMITTED

3. EVIDENCE SUBMITTED UNDER PREVIOUS APPROVAL # 08-1126.08

A. DRAWINGS

1. *Drawing No. 08-219, titled " Sure-Board Wall Panel ", sheets 1 through 10 of 10, prepared by Tilteco, Inc., dated October 01, 2008 with last revision #1 dated October 01, 2008, signed and sealed by Walter A. Tillit Jr., P.E., on December 15, 2008.*

B. TEST

1. *None.*

C. CALCULATIONS

1. *Calculation titled "Revision of Miami-Dade County Product Approval Anchor Calculations " by Walter A. Tillit Jr., P.E. dated November 24, 2008 signed and sealed by Walter A Tilit Jr., PE.*

D. QUALITY ASSURANCE

1. *By Miami-Dade County Building Code Compliance Office.*

E. MATERIAL CERTIFICATION

1. *Copy of N.O.A. # 05-0929.09*

4. EVIDENCE SUBMITTED UNDER PREVIOUS APPROVAL # 10-0519.09

A. DRAWINGS

1. *Drawing No. 08-219, titled " Sure-Board Wall Panel ", sheets 1 through 10 of 10, prepared by Tilteco, Inc., dated October 01, 2008 with last revision #2 dated June 28, 2010, signed and sealed by Walter A. Tillit Jr., P.E., on July 01, 2010.*

B. TEST

1. *None.*

C. CALCULATIONS

1. *None.*

D. QUALITY ASSURANCE

1. *By Miami-Dade County Building Code Compliance Office.*

E. MATERIAL CERTIFICATION

1. *Copy of N.O.A. # 08-1126.08*



Helmy A. Makar, P.E., M.S.
Product Control Section Supervisor

NOA No. 19-0213.08

Expiration Date: 06/13/2024

Approval Date: 06/13/2019

International Materials, Inc. dba Intermat, Inc.

NOTICE OF ACCEPTANCE: EVIDENCE SUBMITTED

5. EVIDENCE SUBMITTED UNDER PREVIOUS APPROVAL # 12-0229.07

A. DRAWINGS

1. *Drawing No. 12-009, titled " Sure-Board Wall Panel ", sheets 1 through 10 of 10, prepared by Tilteco, Inc., dated January 17, 2012 with last revision #1 dated January 17, 2012, signed and sealed by Walter A. Tillit Jr., P.E., on January 25, 2012.*

B. TEST

1. *None.*

C. CALCULATIONS

1. *None.*

D. QUALITY ASSURANCE

1. *By Miami-Dade County Department of Regulatory and Economic Resources (RER).*

E. MATERIAL CERTIFICATION

1. *None.*

F. OTHERS

1. *Florida Building Code, 2010 Edition Compliance letter, issued by Tilteco, Inc., dated February 01, 2012, signed and sealed by Walter A. Tillit Jr., P.E.*

6. EVIDENCE SUBMITTED UNDER PREVIOUS APPROVAL # 14-1030.12

A. DRAWINGS

1. *Drawing No. 13-089, titled " Sure-Board Wall Panel ", sheets 1 through 10 of 10, prepared by Tilteco, Inc., dated December 09, 2013 with revision #1 dated December 09, 2013, signed and sealed by Walter A. Tillit Jr., P.E., on October 20, 2014.*

B. TEST

1. *None.*

C. CALCULATIONS

1. *None.*

D. QUALITY ASSURANCE

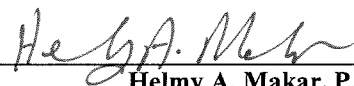
1. *By Miami-Dade County Department of Regulatory and Economic Resources.*

E. MATERIAL CERTIFICATION

1. *None.*

F. OTHERS

1. *Florida Building Code, 2010 Edition Compliance letter, issued by Tilteco, Inc., dated October 17, 2014, signed and sealed by Walter A. Tillit Jr., P.E.*



Helmy A. Makar, P.E., M.S.
Product Control Section Supervisor
NOA No. 19-0213.08
Expiration Date: 06/13/2024
Approval Date: 06/13/2019

International Materials, Inc. dba Intermat, Inc.

NOTICE OF ACCEPTANCE: EVIDENCE SUBMITTED

7. EVIDENCE SUBMITTED UNDER PREVIOUS APPROVAL # 15-0601.10

A. DRAWINGS

1. *Drawing No. 15-149, titled " Sure-Board Wall Panel ", sheets 1 through 10 of 10, prepared by Tilteco, Inc., dated May 22, 2015 with revision #1 dated May 22, 2015, signed and sealed by Walter A. Tillit Jr., P.E., on May 26, 2015.*

B. TEST

1. *None.*

C. CALCULATIONS

1. *None.*

D. QUALITY ASSURANCE

1. *By Miami-Dade County Department of Regulatory and Economic Resources.*

E. MATERIAL CERTIFICATION

1. *None.*

F. OTHERS

1. *Florida Building Code, 2014 Edition Compliance letter, issued by Tilteco, Inc., dated May 21, 2015, signed and sealed by Walter A. Tillit Jr., P.E.*

8. EVIDENCE SUBMITTED UNDER PREVIOUS APPROVAL # 18-0905.10

A. DRAWINGS

1. *Drawing No. 18-088, titled "Sure-Board Wall Panel", sheets 1 through 10 of 10, prepared by Tilteco, Inc., dated August 27, 2018 with revision #1 dated August 27, 2018, signed and sealed by Walter A. Tillit Jr., P.E., on August 28, 2018.*

B. TEST

1. *None.*

C. CALCULATIONS

1. *None.*

D. QUALITY ASSURANCE

1. *By Miami-Dade County Department of Regulatory and Economic Resources.*

E. MATERIAL CERTIFICATION

1. *None.*

F. OTHERS

1. *Florida Building Code, 2017 Edition Compliance letter, issued by Tilteco, Inc., dated August 27, 2018, signed and sealed by Walter A. Tillit Jr., P.E.*



Helmy A. Makar, P.E., M.S.
Product Control Section Supervisor

NOA No. 19-0213.08

Expiration Date: 06/13/2024

Approval Date: 06/13/2019

International Materials, Inc. dba Intermat, Inc.

NOTICE OF ACCEPTANCE: EVIDENCE SUBMITTED

9. NEW EVIDENCE SUBMITTED

A. DRAWINGS

1. *Drawing No. 19-003, titled "Sure-Board Wall Sheathing System", sheets 1 through 5 of 5, prepared by Tilteco, Inc., dated January 10, 2019, signed and sealed by Walter A. Tillit Jr., P.E., on February 08, 2019.*

B. TEST

1. *None.*

C. CALCULATIONS

1. *None.*

D. QUALITY ASSURANCE

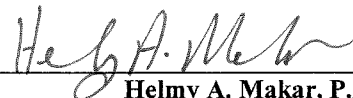
1. *By Miami-Dade County Department of Regulatory and Economic Resources.*

E. MATERIAL CERTIFICATION

1. *None.*

F. OTHERS

1. *Florida Building Code, 2017 Edition Compliance letter, issued by Tilteco, Inc., dated January 22, 2019, signed and sealed by Walter A. Tillit Jr., P.E.*



Helmy A. Makar, P.E., M.S.
Product Control Section Supervisor

NOA No. 19-0213.08

Expiration Date: 06/13/2024

Approval Date: 06/13/2019

GENERAL NOTES:

1. THIS PRODUCT APPROVAL DOCUMENT (P.A.D.) APPLIES ONLY TO THE STRUCTURAL WALL SHEATHING SYSTEM INDICATED AND SPECIFIED ON THIS DRAWING, AND HAS BEEN VERIFIED FOR COMPLIANCE IN ACCORDANCE WITH THE 2017 (6th EDITION) OF THE FLORIDA BUILDING CODE.

DESIGN WIND LOADS FOR ANY INSTALLATION SHALL BE DETERMINED AS PER SECTION 1620 OF THE ABOVE MENTIONED CODE, USING ASCE 7-10 AND SHALL NOT EXCEED THE MAXIMUM (A.S.D.) DESIGN PRESSURE RATINGS AND ALLOWABLES INDICATED ON THIS SHEET.

IN ORDER TO VERIFY THE ABOVE CONDITION, ULTIMATE DESIGN WIND LOADS DETERMINED PER ASCE 7-10 SHALL BE FIRST REDUCED TO A.S.D. DESIGN WIND LOADS BY MULTIPLYING THEM BY 0.6 IN ORDER TO COMPARE THESE W/ MAX. (A.S.D.) DESIGN PRESSURE RATINGS INDICATED ON THIS SHEET.

2. EXISTING METAL STUDS WHERE SURE-BOARD® WILL BE ATTACHED ARE NOT PART OF THIS APPROVAL, BUT MUST MEET WITH MINIMUM REQUIREMENTS INDICATED ON THIS DRAWING, AND SHALL BE STRUCTURALLY DESIGNED BY A FLORIDA REGISTERED ENGINEER OR ARCHITECT TO SUSTAIN THE SUPERIMPOSED LOADS PER FLORIDA BUILDING CODE AND SHALL BE REVIEWED BY THE STRUCTURAL PLANS EXAMINER WHERE SURE-BOARD® WILL BE INSTALLED.

3. ALL SCREWS SHALL BE CORROSION RESISTANT AS PER DIN 50018 WITH FLAT HEAD AND RAISED SIDES TO PREVENT EXCESSIVE PENETRATION WITH MIN. Fy = 80 ksi & SHALL COMPLY W/ FLORIDA BUILDING CODE SECTION 2411.3.3.4.

4. MAXIMUM A.S.D. ALLOWABLES: OBTAINED THRU TESTING PERFORMED AS PER TAS 201, 202, 203 AND ASTM E-72, AS PER ATL REPORT 0506.01-03 WITH ADDENDUM & REPORT #
 LARGE MISSILE IMPACT RESISTANT: 80 FT/SEC. MISSILE SPEED. (9 Lb MISSILE)
 MAXIMUM SURE-BOARD® PANEL HEIGHT: 108" *
 MAXIMUM SURE-BOARD® PANEL WIDTH: 48" *
 MAXIMUM A.S.D. RACKING LOAD PER PANEL: 2200 Lb (550 Lb/Ft)*
 MAXIMUM LATERAL A.S.D. DESIGN PRESSURE RATING FOR PANELS WITH STUDS @ 16" o.c.: ±64.3 psf
 * PANELS MAY BE INSTALLED SIDE BY SIDE OR STACKED ON TOP OF EACH OTHER FOLLOWING JOINT DETAIL ON SHEET 2

5. (a) THIS P.A.D. PREPARED BY THIS ENGINEER IS GENERIC AND DOES NOT PROVIDE INFORMATION FOR A SITE SPECIFIC PROJECT; i.e. WHERE THE SITE CONDITIONS DEVIATE FROM THE P.A.D.

(b) CONTRACTOR TO BE RESPONSIBLE FOR THE SELECTION, PURCHASE AND INSTALLATION INCLUDING LIFE SAFETY OF THIS PRODUCT BASED ON THIS P.A.D. PROVIDED HE/SHE DOES NOT DEVIATE FROM THE CONDITIONS DETAILED ON THIS DOCUMENT. CONSTRUCTION SAFETY AT SITE IS THE CONTRACTOR'S RESPONSIBILITY.

(c) THIS P.A.D. WILL BE CONSIDERED INVALID IF MODIFIED.

(d) SITE SPECIFIC PROJECTS SHALL BE PREPARED BY A FLORIDA REGISTERED ENGINEER OR ARCHITECT WHICH WILL BECOME THE PROFESSIONAL OF RECORD (P.O.R.) FOR THE PROJECT AND DELEGATED ENGINEER TO THE P.A.D. ENGINEER SHALL SUBMIT TO THIS LETTER THE SITE SPECIFIC DRAWINGS FOR REVIEW.

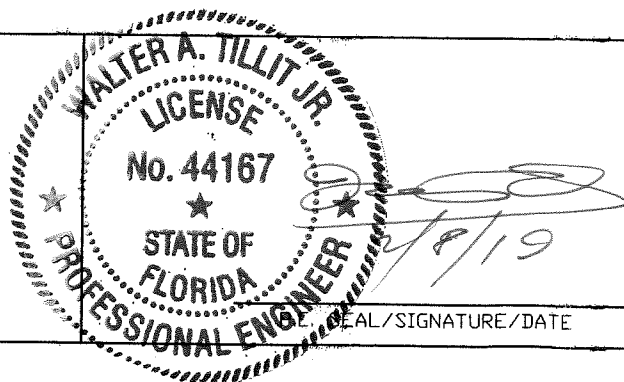
(e) ORIGINAL P.A.D. SHALL BEAR THE DATE AND ORIGINAL SEAL AND SIGNATURE OF THE PROFESSIONAL ENGINEER THAT PREPARED IT.

6. A PERMANENT PANEL MANUFACTURER'S LABEL SHALL BE PLACED ON THE EXPOSED SURFACE OF THE PANEL. ONE LABEL SHALL BE PLACED FOR EVERY OPENING. LABEL SHALL READ AS FOLLOWS:
 "SURE-BOARD® WALL SHEATHING SYSTEM.
INTERMAT INC.
 COSTA MESA, CA.
 MIAMI-DADE COUNTY PRODUCT CONTROL APPROVED.

THIS DRAWING SHALL ONLY BE USED TO OBTAIN PERMITS IN THE STATE OF FLORIDA

Approved as complying with the Florida Building Code
 Date 06/13/2019
 NOA# 19-0213-08
 Miami Dade Product Control
 By *Heidi A. Mah*
 MIAMI DADE COUNTY

Warning note:
 Attention Building Official/Building Inspector
 An "original signed and company sealed letter" from Intermat Inc. is required proving that the panels were purchased from them in order for this NOA to be valid on any job.



FLORIDA BUILDING CODE (HIGH VELOCITY HURRICANE ZONE)			
©2019 TILTECO, INC. TILLIT TESTING & ENGINEERING COMPANY 6355 N.W. 36th St., Ste. 305, VIRGINIA GARDENS, FL 33166 Phone: (305)871-1530 Fax: (305)871-1531 e-mail: tilteco@aol.com CA-0006719 WALTER A. TILLIT Jr. P.E. FLORIDA Lic. # 44167		SURE-BOARD® WALL SHEATHING SYSTEM INTERMAT INC. 2045 PLACENTIA AVE. COSTA MESA, CA. 92627 SUPPORT @ SUREBOARD.COM	
		M.P. DRAWN BY: 1/10/19 DATE: 19-003 DRAWING No.	
REV. NO	DESCRIPTION	DATE	REV. No
1	-	-	3
2	-	-	4
		SHEET 1 OF 5	

SPECIFICATIONS FOR SURE-BOARD®:

1. THE ACROCRETE ACROWALL DA SYSTEM PROVIDES WEATHER RESISTANT TO SURE-BOARD®. THE UTILIZATION OF DURABLE CEMENTITIOUS BOARD SUBSTRATE (PERMABASE BOARD) COMBINED WITH ACROCRETE ACRYLIC FINISH PROVIDES THE DESIRED ESTHETICS OF VARIOUS COLORS AND TEXTURES TO ACHIEVE AN ARCHITECTURALLY PLEASING WALL. THE ACROCRETE ACROWALL DA SYSTEM IS BACKED BY A 10 YEARS LIMITED MANUFACTURERS WARRANTY ON THE CEMENTITIOUS BOARD (PERMABASE BOARD) AND A 5 YEARS LIMITED MANUFACTURERS WARRANTY ON ALL COATINGS.
2. ACRYLIC EMULSION, MODEL 5-4253 BY SEACO SOUTHEASTERN ADHESIVE COMPANY, IS A READY TO USE ACRYLIC EMULSION THAT SHALL BE USED TO BOND THE PERMABASE BOARD TO THE GALVANIZED STEEL SKIN BEHIND IT CONSTITUTING THE SURE-BOARD® SYSTEM.
3. PERMABASE™ CEMENT BOARD BY NATIONAL GYPSUM COMPANY, IS A 1/2" THICK, CEMENTITIOUS TILE BACKER BOARD MADE OF PORTLAND CEMENT, AGGREGATE AND REINFORCED WITH FIBERGLASS MESH. THE BOTTOM (UNEXPOSED) SIDE FACING HAS A SMOOTH FINISH WITH A FIBERGLASS MESH EMBEDDED IN THE CEMENT SLURRY AND THE TOP (EXPOSED) SIDE FACING HAS A ROUGH FINISH WITH A FIBERGLASS MESH MECHANICALLY EMBEDDED INTO CORE WITH A WEIGHT OF 3.0 POUNDS PER SQUARE FOOT.

PHYSICAL PROPERTIES:	TEST METHOD	PERMABASE
FLEXURAL STRENGTH (psi)	ASTM C 947	750
WEIGHT (psf)	ASTM C 473	3
COMPRESSIVE STRENGTH (psi) (INDENTATION)	ASTM D 2394	2250
FLAME SPREAD/SMOKE DEVELOPED	ASTM E 84	5/0
THERMAL "R"/K VALUE	PROPERTY OF MATERIAL	0.2/2.7
SHEAR BOND STRENGTH, 7 DAYS:		
DRY-SET PORTLAND CEMENT MORTAR (psi)	ANSI A118.1	204
LATEX-SET PORTLAND CEMENT MORTAR (psi)	ANSI A118.4	241
ORGANIC ADHESIVES TYPE 1 (psi)	ANSI A136.1	159

4. ACRODRY BY ACROCRETE ARCHITECTURAL FINISHING SYSTEMS, INC., IS AN ACRYLIC ADHESIVE AND BASE COAT COMBINATION FOR THE ACROCRETE WALL SYSTEMS, USED TO EMBED REINFORCING MESH AND USED AS A LEVELING COAT. THE PROPER MIXING RATIO IS 12 LB OF WATER TO 50 LB/BAG OF ACRODRY, COVERING APPROXIMATELY 100 SQUARE FEET OF WALL.
5. ACROMESH BY ACROCRETE ARCHITECTURAL FINISHING SYSTEMS, INC., IS A SPECIALLY WOVEN AND TREATED FIBERGLASS REINFORCING HIGH IMPACT MESH, ALKALI RESISTANT, THICKNESS: 0.045+10% INCHES, WEIGHT: 20.5+10% oz./sq.yd., MINIMUM TENSILE WRAP: 800 Lb/in AND MINIMUM TENSILE FILL: 550 Lb/in.
6. ACROFINISH BY ACROCRETE ARCHITECTURAL FINISHING SYSTEMS, INC., IS A PREMIXED DECORATIVE AND PROTECTIVE WALL COATING. IT IS FORMULATED WITH A 100% PURE ACRYLIC BASED COATINGS INCORPORATING PURE MARBLE AGGREGATES IN VARIETY OF COLOR AND TEXTURES. 70 LB PAIL COVERS APPROXIMATELY 100-190 SQUARE FEET OF WALL DEPENDING ON TEXTURE.
7. SURE BOARD® BEARS ALSO A CURRENT UNIFORM EVALUATION SERVICES REPORT (#126).

8. ACROCRETE ACROWALL DA SYSTEM BEARS AN EVALUATION REPORT BASED ON THE FOLLOWING TESTING PERFORMED ON THIS PRODUCT:
 -TEST REPORTS ON ACROCRETE, PREPARED BY APPLIED CONSUMER SERVICES INC.

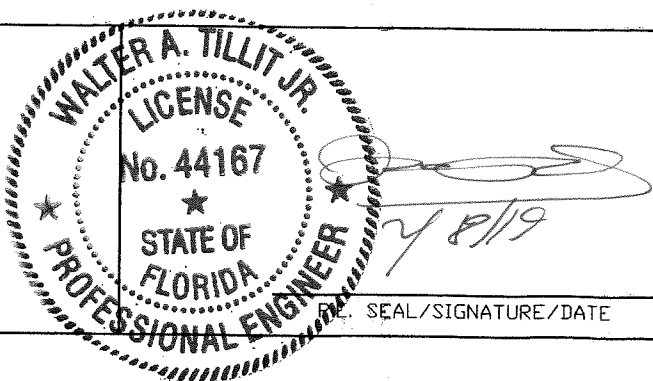
NUMBER	TEST	ADDITIONAL TEST:
2525-A	ASTM G 26, WEATHERING EXPOSURES	-TEST REPORT ON FIRE PROPAGATION UNDER MODIFIED ASTM E 108, PREPARED BY TESTING CONSULTANTS, INC. PROJECT NUMBER 002010.
2525-B	ASTM E 96, VAPOR TRANSMISSION	-TEST REPORT ON SURFACE BURNING CHARACTERISTICS OF ACROBASE AND ACROCRETE FINISH APPLIED TO GRC BOARD, TESTED UNDER ASTM E-84, PREPARED BY COMMERCIAL TESTING COMPANY, REPORT No. 75239.
2525-C	UL-181, p.11, MOLD RESISTANCE	-TEST REPORT ON WEATHERING EXPOSURE TESTS WITH XENON ARC AND RAIN CYCLES, 2000 HOURS UNDER ASTM G-26, PREPARED BY APPLIED CONSUMER SERVICES, INC., REPORT L/N 2931.
2525-D	ASTM D 413, ADHESION TEST	-TEST REPORT ON IMPACT LOAD RESISTANCE OF ACROWALL DA FINISH SYSTEMS UNDER EIMA TEST METHOD AND STANDARD 101.86, PREPARED BY ACROCRETE, INC.
2525-E	ASTM D 2240, HARDNESS TEST	-TEST REPORT ON PHYSICAL PROPERTIES, PREPARED BY JIM WALTER RESEARCH CORP. THE FOLLOWING TESTS WERE PERFORMED:
2525-F	ASTM C 177, THERMAL RESISTANCE	. COMPRESSIVE STRENGTH UNDER ASTM D 1621.
2525-G	ASTM C 6, WATER ABSORPTION	. FLEXURAL STRENGTH UNDER ASTM C 203.
2525-H	FS TT-C-555, WIND DRIVEN RAIN	. WATER ABSORPTION UNDER ASTM C 272.
2525-I	ASTM B 177, SALT FOG	. WATER VAPOR TRANSMISSION UNDER ASTM E 96.
2525-J	ASTM C 6, p14, FREEZE/THAW	. DIMENSIONAL STABILITY UNDER ASTM D 2126.
2525-K	ASTM D 968, SAND ABRASION	-TEST REPORT ON SURFACE BURNING CHARACTERISTICS UNDER ASTM E 84 FOR ACRODRY PREMIXED BASE COAT, CELOTEX CORPORATION TESTING SERVICES, MTS JOB No. 520228.
2525-L	ASTM D 1308/ANSI Z-124.2 (MODIFIED), CHEMICAL RESISTANCE	-ENGINEERING FIRE INVESTIGATION OF ACRODRY, WALKER ENGINEERING, INC.
2525-M	STAIN RESISTANCE	

APPLICATION SEQUENCE:

1. SPREAD 6-8 MIL OF ACRYLIC EMULSION TO BOND THE 22 GAGE GALVANIZED STEEL SKIN (ALREADY ATTACHED TO WALL PANEL STEEL FRAME) TO THE PERMABASE™ CEMENT BOARD CONSTITUTING THE SURE-BOARD® SYSTEM.
2. USE (5) #10x3/4" S.M.S. LOCATED AT 2 1/4" FROM END, 8", 13" 1/2", 14", 7 1/2" TO SECURE PERMABASE™ CEMENT BOARD TO HORIZONTAL TOP AND BOTTOM SLIP TRACK AND USE (17) #10x1 1/2" S.M.S. STARTING AT 6" FROM BOTTOM AT 6" o.c. Max. TO SECURE PERMABASE™ CEMENT BOARD TO 20 GAGE GALVANIZED STEEL VERTICAL STUDS SPACED AT 16" o.c. Max.
3. APPLY ACRODRY AND EMBED 9 1/4" WIDE FIBERGLASS MESH INTO THE WET ACRODRY OVER EVERY JOINT BETWEEN PANELS AND PANEL EDGE AROUND DOORS AND WINDOWS. A PERIOD OF 24 HOURS SHALL LAPSE BETWEEN THE INSTALLATION OF THE JOINT MESH AND THE ACRODRY LEVELING COAT.
4. APPLY ACRODRY LEVELING COAT USING 1/2"x1/2" STAINLESS STEEL NOTCHED TROWEL WITH 1 1/2" SPACE BETWEEN NOTCHES TO THE ENTIRE SURFACE OF BOARD AT A UNIFORM THICKNESS. A PERIOD OF 24 HOURS SHALL LAPSE BEFORE INSTALLING THE FINISH COAT.
5. FINISH WALL USING A STAINLESS STEEL TROWEL, APPLY AND LEAVE A COAT OF TROWEL FINISHES EFFECT OR SAND EFFECT TO A UNIFORM THICKNESS, APPROXIMATELY 1 TO 1 1/2 TIMES THE LARGEST AGGREGATE. THE TEXTURE IS ACHIEVED BY UNIFORM HAND MOTION AND TYPE OF TOOL USED. MAINTAIN WET EDGE FOR UNIFORMITY OF COLOR AND TEXTURE. A TIGHT COAT OF ACROCRETE ACROFINISH SHALL BE APPLIED CONTINUOUSLY, TO A THICKNESS NOT GREATER THAN THE LARGEST AGGREGATES. A WET EDGE SHALL BE MAINTAINED. LEVELING AND TEXTURING SHALL TAKE PLACE IN ONE OPERATION. ACROFINISH DRYING TIME IS 24 HOURS. OVERALL AVERAGE THICKNESS OF ACROCRETE DA SYSTEM IS 3/16".
6. TO REDUCE THE RISK OF DAMAGING WATER SENSITIVE SHEATHING OR FRAMING, ALL WINDOW AND DOOR OPENINGS MUST BE PROPERLY FLASHED AND WATERPROOFED AND INCIDENTAL WATER SHALL BE ALLOWED TO ESCAPE. PLEASE REFER TO SHEET 3 OF 10 FOR TYP. SEALING DETAIL AT JOINT BETWEEN PANELS AND SHEET 10 OF 10 FOR TYP. SEALING DETAIL AT BOTTOM OF PANEL. FOLLOW WINDOW AND DOOR MANUFACTURERS RECOMMENDATIONS FOR PROPER INSTALLATION. SEALING DETAILS ON SHEET 9 OF 10 ARE TYPICAL AND SHOW THE INTENT TO PREVENT WATER INFILTRATION INTO AND BEHIND THE SYSTEM. SEE CORNER DETAIL ON SHEET 10 OF 10. ALTERNATE DETAILS AND SPECIFIC CONDITIONS NOT COVERED BY THE TYPICAL DETAILS ARE THE RESPONSIBILITY OF THE LICENSED DESIGN PROFESSIONAL OF RECORD FOR THE BUILDING WHERE THIS SYSTEM WILL BE USED, IN CONSULTATION WITH WELLBILT INTERNATIONAL INC.
7. TEMPORARY PROTECTION SHALL BE PROVIDED AT ALL TIMES UNTIL BASE COAT, FINISH, AND PERMANENT FLASHINGS, SEALANT, ETC. ARE COMPLETED TO PROTECT THE WALL FROM WEATHER AND OTHER DAMAGE. SEALANT AND FLASHINGS SHALL BE INSTALLED PROMPTLY.
8. GLASS FIBER OR SAFB BLANKET INSULATION MAY BE INSERTED IN THE WALL CAVITY FOR BETTER THERMAL AND SOUND PERFORMANCE.
9. THE MANUFACTURER'S PUBLISHED INSTALLATION INSTRUCTIONS AND THIS DRAWING SHALL BE STRICTLY ADHERED TO AND A COPY OF THESE INSTRUCTIONS SHALL BE AVAILABLE AT ALL TIMES ON THE JOB SITE DURING INSTALLATION.
10. THE INSTRUCTIONS WITHIN THIS DRAWING GOVERN IF THERE ARE ANY CONFLICTS BETWEEN THE MANUFACTURER'S INSTRUCTIONS AND THIS DRAWING.

Approved as complying with the Florida Building Code
 Date 06/13/2019
 NOA# 19-0213-08
 Miami Dade Product Control
 By *Heidi A. Miller*
 MIAMI DADE COUNTY

Warning note:
Attention Building Official/Building Inspector
An "original signed and company sealed letter"
from Intermat Inc. is required proving that the
panels were purchased from them in order for
this NOA to be valid on any job.



FLORIDA BUILDING CODE (HIGH VELOCITY HURRICANE ZONE)			
 TILTECO INC. TILLIT TESTING & ENGINEERING COMPANY 6355 N.W. 36th. St., Ste. 305, VIRGINIA GARDENS, FL 33166 Phone : (305)871-1530 . Fax : (305)871-1531 e-mail tilteco@aol.com CA-0006719 WALTER A. TILLIT Jr. P.E. FLORIDA Lic. # 44167		SURE-BOARD® WALL SHEATING SYSTEM INTERMAT INC. 2045 PLACENTIA AVE. COSTA MESA, CA. 92627 SUPPORT @ SUREBOARD.COM	M.P. DRAWN BY: 1/10/19 DATE: 19-003 DRAWING No. SHEET 2 OF 5
REV. NO	DESCRIPTION	DATE	REV. No
1	-	-	3
2	-	-	4

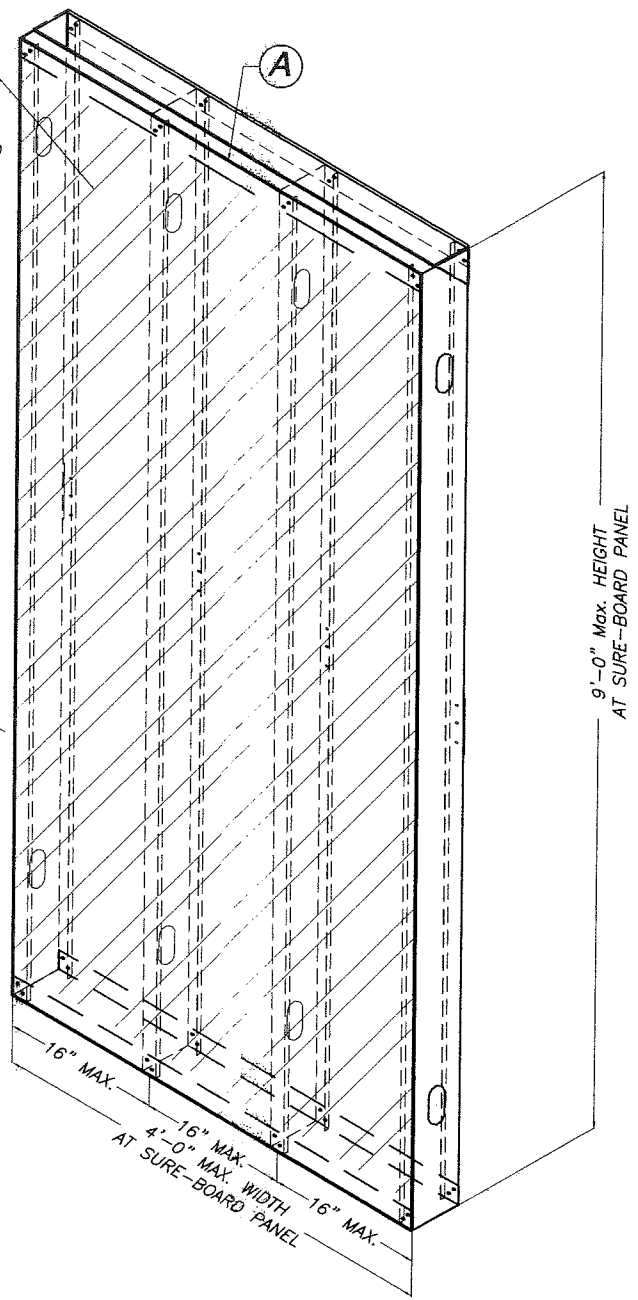
(A) THROUGHOUT ENTIRE PANEL AREA

1/2" THK. PERMABASE™ CEMENT BOARD ADHERED TO GALVANIZED STEEL SKIN W/ ACRYLIC EMULSION (SURE-BOARD® SYSTEM) AND SECURED W/ (5) #10x3/4" S.M.S. LOCATED AT 2 1/4" FROM END, 8", 13 1/2", 14", 7 1/2" TO HORIZONTAL TOP AND BOTTOM TRACK AND (17) #10x1 1/2" S.M.S. STARTING AT 6" FROM BOTTOM AT 6" o.c. Max. TO VERTICAL STUDS SPACED AT 16" o.c. Max.*

ACROWALL DA SYSTEM

ACROFINISH COAT

ACRODRY BASE COAT



9'-0" Max. HEIGHT AT SURE-BOARD PANEL

* THIS FASTENER PATTERN IS ALSO VALID FOR WINDOW TOP & BOTTOM PANELS, AS WELL AS DOOR LINTEL PANELS.

TYPICAL SURE-BOARD® PANEL ASSEMBLY

N.T.S.

(A) 4' WIDE x 9' (MAX.) HIGH STEEL SHEET

(0.027" THICK Min. GALV. STEEL)
ASTM A-653 GRADE 40 Min. W/ 47.0 KSI Min. YIELD STRENGTH (AFTER ROLLED) G-90 GALVANIZED

FRAMING COMPONENTS

N.T.S.

(2) METAL STUDS MIN. 0.044" THK. GRADE 40 G-90 GALVANIZED STEEL (SEE NOTE 2/1) ALWAYS REQUIRED AT ALL JOINTS BETWEEN SURE-BOARD® PANELS TO PROVIDE SUPPORT FOR PANELS AT VERTICAL OR HORIZONTAL JOINTS ALL AROUND SURE-BOARD® PANELS.

(5) #10x3/4" S.M.S. LOCATED AT 2 1/4" FROM END, 8", 13 1/2", 14", 7 1/2" TO HORIZONTAL TOP AND BOTTOM TRACK OR HORIZONTAL STUDS AND (17) #10x1 1/2" S.M.S. STARTING AT 6" FROM BOTTOM TRACK OR HORIZONTAL STUDS AT 6" o.c. Max. TO DOUBLE VERTICAL STUDS SPACED AT 16" o.c. Max.

1/2" THK. PERMABASE™ CEMENT BOARD

ACRODRY BASE COAT
ACROFINISH COAT

1/2" THK. PERMABASE™ CEMENT BOARD ADHERED TO GALVANIZED STEEL SKIN W/ ACRYLIC EMULSION (SURE-BOARD® SYSTEM)

9 1/4" WIDE CONT. FULL HEIGHT OR FULL WIDTH IMPACT FIBERGLASS MESH EMBEDDED INTO ACRODRY

TYPICAL SEALING DETAIL AT VERTICAL OR HORIZONTAL JOINTS BETWEEN SURE-BOARD® PANELS

N.T.S.

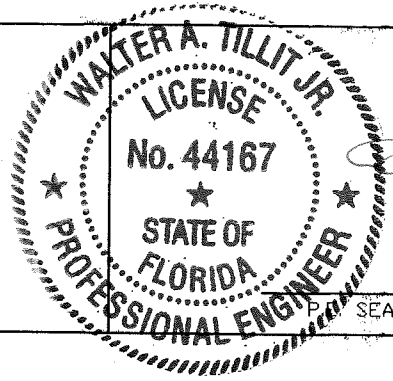
(INCLUDES SOLID, WINDOW AND DOOR PANEL JOINTS)

Approved as complying with the Florida Building Code
Date 06/13/2019
NOA# 19-0213.08
Miami Dade Product Control

By *He G.A. Mohr*

MIAMI DADE COUNTY

Warning note:
Attention Building Official/Building Inspector An "original signed and company sealed letter" from InterMat Inc. is required proving that the panels were purchased from them in order for this NOA to be valid on any job.



Walter A. Tillit Jr.
2/8/19

SEAL/SIGNATURE/DATE

FLORIDA BUILDING CODE (HIGH VELOCITY HURRICANE ZONE)

©2019 TILTECO, INC.

TILTECO inc.
TILLIT TESTING & ENGINEERING COMPANY
6355 N.W. 36th. St., Ste. 305, VIRGINIA GARDENS, FL. 33166
Phone : (305)871-1530 Fax : (305)871-1531
e-mail tilteco@aol.com
CA-0006719
WALTER A. TILLIT Jr. P.E.
FLORIDA Lic. # 44167

SURE-BOARD® WALL SHEATING SYSTEM

INTERMAT INC.
2045 PLACENTIA AVE.
COSTA MESA, CA. 92627
SUPPORT @ SUREBOARD.COM

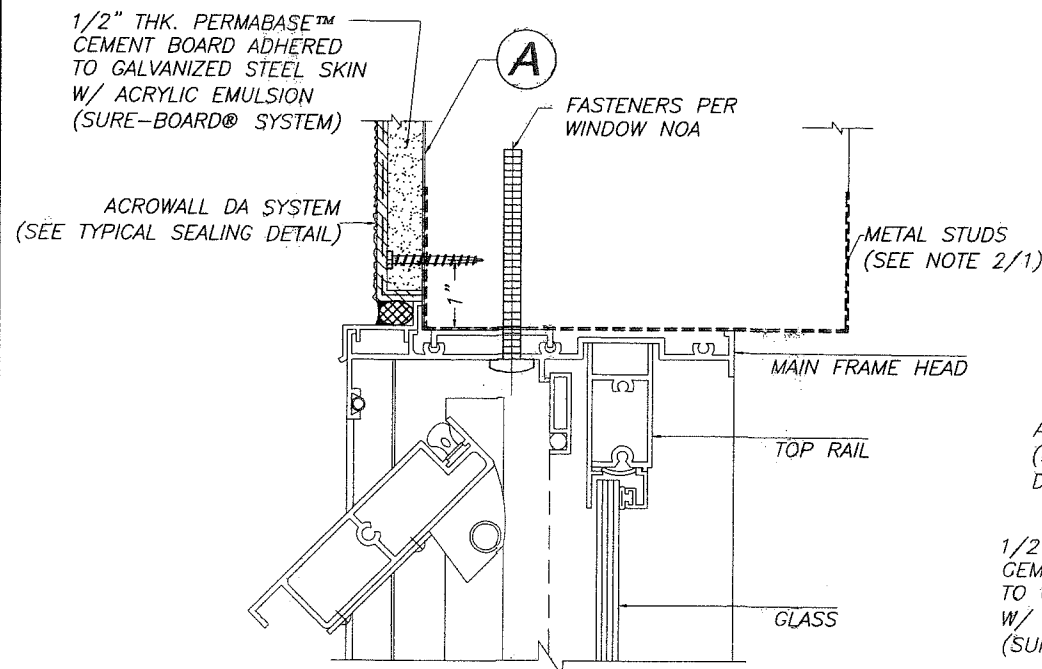
M.P. DRAWN BY:

1/10/19 DATE:

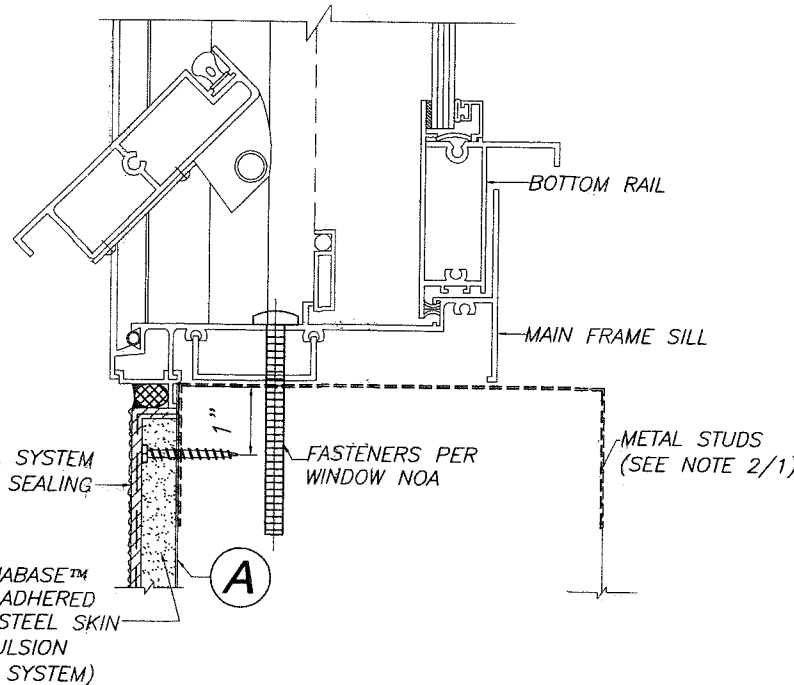
19-003 DRAWING No.

REV. NO	DESCRIPTION	DATE	REV. No	DESCRIPTION	DATE
1	-	-	3	-	-
2	-	-	4	-	-

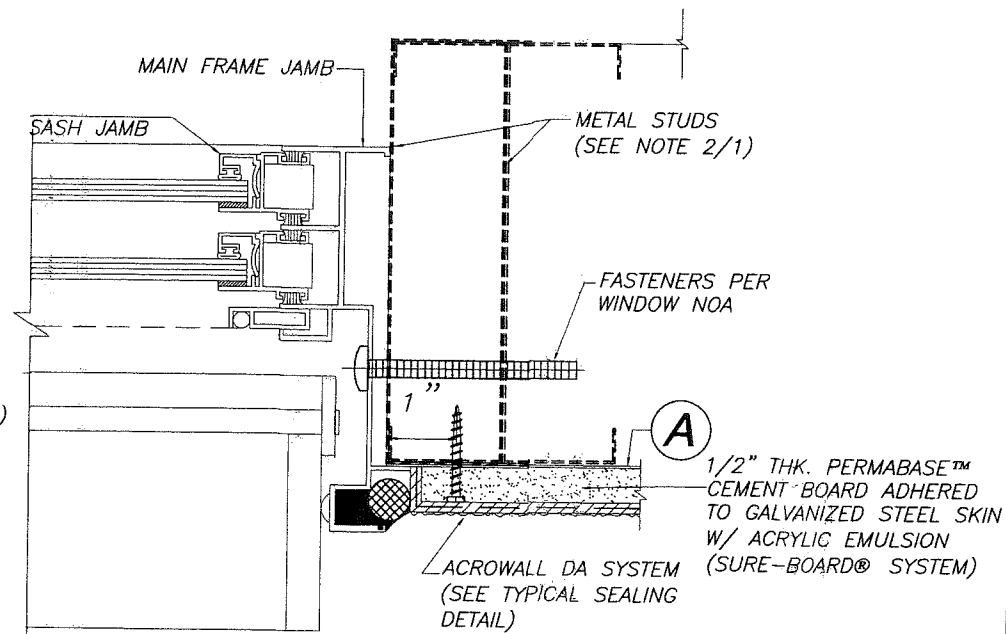
SHEET 3 OF 5



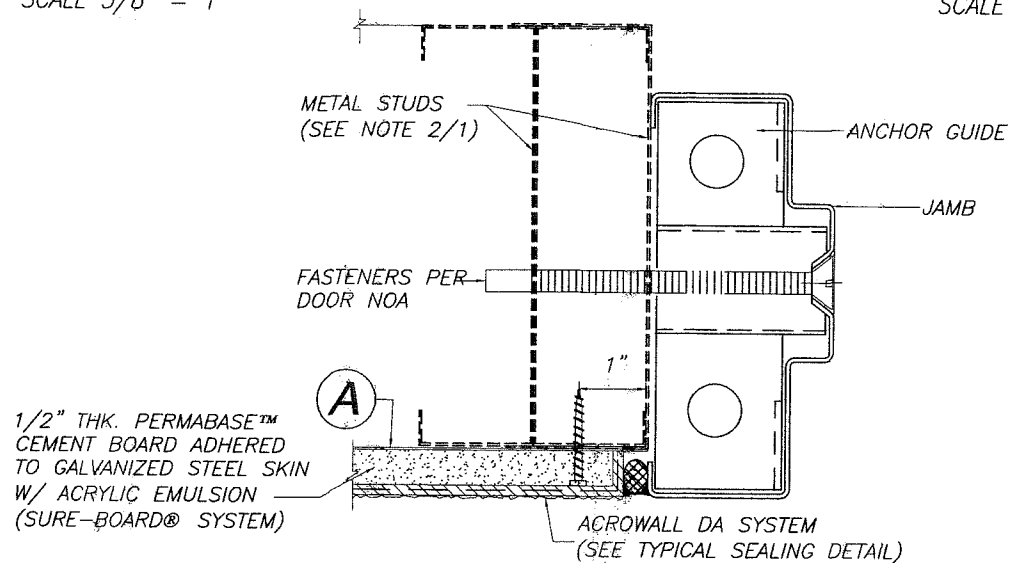
SECTION A: WINDOW HEAD CONNECTION TO PANEL
SCALE 3/8" = 1"



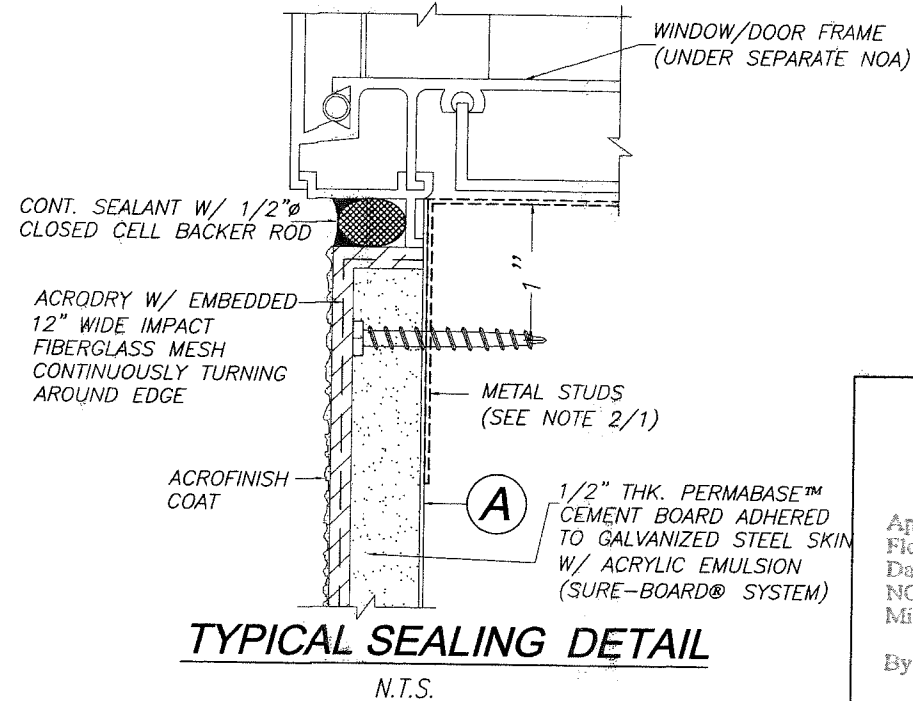
SECTION B: WINDOW SILL CONNECTION TO PANEL
SCALE 3/8" = 1"



SECTION C: WINDOW JAMB CONNECTION TO PANEL
SCALE 3/8" = 1"



SECTION D: DOOR JAMB CONNECTION TO PANEL
SCALE 3/8" = 1"



TYPICAL SEALING DETAIL
N.T.S.

Approved as complying with the Florida Building Code
Date 06/13/2019
NOA# 19-0213-08
Miami Dade Product Control
By *Walter A. Tillit Jr.*
MIAMI DADE COUNTY

Warning note:
Attention Building Official/Building Inspector
An "original signed and company sealed letter" from InterMat Inc. is required proving that the panels were purchased from them in order for this NOA to be valid on any job.

WALTER A. TILLIT JR.
LICENSE
No. 44167
STATE OF FLORIDA
PROFESSIONAL ENGINEER
Walter A. Tillit Jr.
2/8/19
DATE / SIGNATURE / DATE

FLORIDA BUILDING CODE (HIGH VELOCITY HURRICANE ZONE)

©2019 TILTECO, INC.

TILTECO INC.
TILLIT TESTING & ENGINEERING COMPANY
6355 N.W. 36th St., Ste. 305, VIRGINIA GARDENS, FL 33166
Phone: (305)871-1530 Fax: (305)871-1531
e-mail: tilteco@aol.com
CA-0006719
WALTER A. TILLIT Jr. P.E.
FLORIDA Lic. # 44167

SURE-BOARD® WALL SHEATING SYSTEM

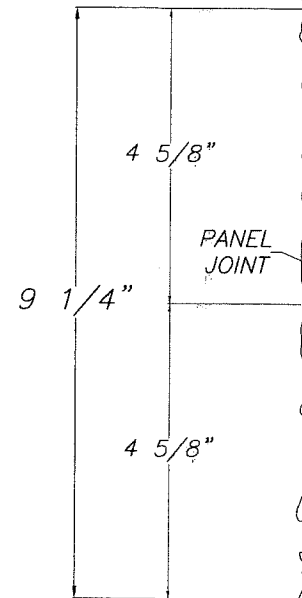
INTERMAT INC.
2045 PLACENTIA AVE.
COSTA MESA, CA. 92627
SUPPORT @ SUREBOARD.COM

REV. NO	DESCRIPTION	DATE	REV. No	DESCRIPTION	DATE
1	-	-	3	-	-
2	-	-	4	-	-

M.P. DRAWN BY:
1/10/19 DATE:
19-003 DRAWING No.
SHEET 4 OF 5

1/2" THK. PERMABASE™ CEMENT BOARD ADHERED TO GALVANIZED STEEL SKIN W/ ACRYLIC EMULSION (SURE-BOARD® SYSTEM) AT SIDE PANEL

9 1/4" WIDE CONT. FULL HEIGHT IMPACT FIBERGLASS MESH EMBEDDED INTO ACRODRY CENTERED WITH JOINT



(5) #10x3/4" S.M.S. LOCATED AT 2 1/4" FROM END, 8", 13 1/2", 14", 7 1/2" TO HORIZONTAL TOP AND BOTTOM TRACK AND
(17) #10x1 1/2" S.M.S. STARTING AT 6" FROM BOTTOM AT 6" o.c Max. TO VERTICAL STUDS SPACED AT 16" o.c. Max.

1/2" THK. PERMABASE™ CEMENT BOARD ADHERED TO GALVANIZED STEEL SKIN W/ ACRYLIC EMULSION (SURE-BOARD® SYSTEM) AT CORNER

ACRODRY BASE COAT
ACROFINISH COAT

CONT. ACRYLIC EMULSION AT JOINT BETWEEN PERMABASE BOARDS @ SURE-BOARD® SYSTEM
9 1/4" WIDE CONT. FULL HEIGHT IMPACT CORNER FIBERGLASS MESH EMBEDDED INTO ACRODRY BENT AROUND CORNER AT 4 5/8" LEG EACH SIDE

1/2" THK. PERMABASE™ CEMENT BOARD ADHERED TO GALVANIZED STEEL SKIN W/ ACRYLIC EMULSION (SURE-BOARD® SYSTEM) AT FRONT OF PANEL

METAL STUDS (SEE NOTE 2/1)

METAL STUDS (SEE NOTE 2/1)

METAL STUDS (SEE NOTE 2/1)

A BENT CONT. AROUND CORNER TO COVER FULL STUD'S DEPTH

CORNER DETAIL BETWEEN SURE-BOARD® PANELS AT VERTICAL JOINTS

Approved as complying with the Florida Building Code
Date 06/13/2019
NOA# 19-0213-08
Miami Dade Product Control
By *[Signature]*
MIAMI DADE COUNTY

Warning note:

Attention Building Official/Building Inspector An "original signed and company sealed letter" from InterMat Inc. is required proving that the panels were purchased from them in order for this NOA to be valid on any job.

1" = 1'-0"
WALTER A. TILLIT JR.
LICENSE
No. 44167
STATE OF FLORIDA
PROFESSIONAL ENGINEER
[Signature]
SIGNATURE/DATE

FLORIDA BUILDING CODE (HIGH VELOCITY HURRICANE ZONE)

©2019 TILTECO, INC.

TILTECO inc.
TILLIT TESTING & ENGINEERING COMPANY
6355 N.W. 36th St., Ste. 305, VIRGINIA GARDENS, FL 33166
Phone : (305)871-1530 Fax : (305)871-1531
e-mail tilteco@aol.com
CA-0006719
WALTER A. TILLIT Jr. P.E.
FLORIDA Lic. # 44167

SURE-BOARD® WALL SHEATING SYSTEM

INTERMAT INC.
2045 PLACENTIA AVE.
COSTA MESA, CA. 92627
SUPPORT @ SUREBOARD.COM

REV. No	DESCRIPTION	DATE	REV. No	DESCRIPTION	DATE
1	-	-	3	-	-
2	-	-	4	-	-

M.P. DRAWN BY:
1/10/19 DATE:
19-003 DRAWING No.
SHEET 5 OF 5