

# Marino\WARE® Product Submittal Data

**PRODUCT NAME:** 400VS125-15

**MARINO\WARE PART #** 400VS25

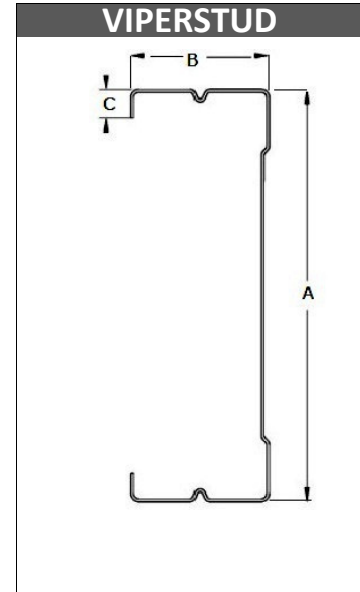


**PROPERTIES:**

<b>A. Web (in)</b>	4	<b>Yield Strength Fy (KSI)</b>	50
<b>B. Flange (in)</b>	1-1/4"	<b>Design Thickness (in)</b>	0.0155
<b>C. Lip (in)</b>	1/4"	<b>Minimum Thickness (in)</b>	0.0147
<b>Mils</b>	15	<b>Gauge EQ</b>	25
<b>Finish*</b>	G40EQ		

\* Or other ASTM A1003 Table 1 Coating

09.22.16 Non-Structural Metal Stud



**SECTION PROPERTIES**

**GROSS SECTION PROPERTIES**

Weight of Member: (lb/ft)	0.370
Cross Sectional Area: <b>A</b> (in <sup>2</sup> )	0.108
Moment of Inertia: <b>Ix</b> (in <sup>4</sup> )	0.25
Radius of Gyration: <b>Rx</b> (in)	1.52
Gross Moment of Inertia: <b>Iy</b> (in <sup>4</sup> )	0.02
Gross Radius of Gyration: <b>Ry</b> (in)	0.429

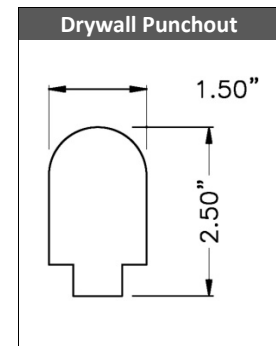
**EFFECTIVE SECTION PROPERTIES<sup>1</sup>**

Moment of Inertia-Deflection: <b>Ix</b> (in <sup>4</sup> )	0.255
Section Modulus: <b>Sx</b> (in <sup>3</sup> )	0.061

**MOMENTS<sup>1</sup>**

Allowable Bending Moment: <b>Ma</b> (in-k)	1.690
Local Buckling Nominal Moment: <b>Mnl</b> (in-k)	3.990
Distortional Buckling Moment: <b>Mnd</b> (in-k)	3.060

Note 1: Tested values



**LIMITING HEIGHTS - COMPOSITE (ft-in)**

Spacing (in)	5 psf			7.5 psf			10 psf		
	L/120	L/240	L/360	L/120	L/240	L/360	L/120	L/240	L/360
12	22-1	18-3	16-3	19-3	15-11	14-2	16-8	14-6	12-11
16	20-1	16-7	14-9	16-8	14-6	12-11	14-5	13-2	11-9
24	16-8	14-6	12-11	13-7	12-8	11-3	11-10	11-6	10-1

- Gypsum must be vertically oriented, applied full height to both sides, and fastened to each stud and track flange
- Acceptable wallboards are 5/8" type X from: USG, National, GP, Pabco, American, Continental & CertainTeed.
- No screws are required between stud and track, except as required by ASTM C754.
- See CCRR-0154 for additional information. Review fire related assemblies for any additional requirements

**CODES & STANDARDS**

- Meets IBC 2015, 2018 & FBC 2020
- ASTM C 645, C 754, E 90, E 119 & AISI S220
- Steel sheet meets ASTM A 1003 or A 653
- Third Party Code Evaluation Report: CCRR-0154
- Multiple Fire Rated Assemblies

**GREEN INFO**

- LEED v4 credits available
- Contact Technical Services for more information



www.marinoware.com

For more information, please contact Marino\WARE Technical Services at 866-545-1545

This technical information reflects the most current information available and supersedes any and all publications, effective 4/2/22.

©Copyright 2022 by Ware Industries, Inc. All rights reserved