

Marino\WARE® Product Submittal Data

PRODUCT NAME: 600VS125-30

MARINO\WARE PART # 600VS30

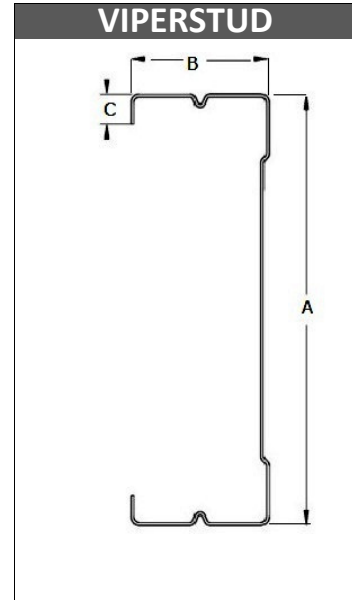


PROPERTIES:

A. Web (in)	6	Yield Strength Fy (KSI)	33
B. Flange (in)	1-1/4	Design Thickness (in)	0.0312
C. Lip (in)	1/4"	Minimum Thickness (in)	0.0296
Mils	30	Gauge	20 DW
Finish*	G40		

*Or other ASTM A1003 Table 1 Coating

09.22.16 Non-Structural Metal Stud



SECTION PROPERTIES

GROSS SECTION PROPERTIES

Weight of Member: (lb/ft)	0.290
Cross Sectional Area: A (in ²)	0.271
Moment of Inertia: Ix (in ⁴)	1.310
Radius of Gyration: Rx (in)	2.190
Gross Moment of Inertia: Iy (in ⁴)	0.042
Gross Radius of Gyration: Ry (in)	0.392

EFFECTIVE SECTION PROPERTIES

Moment of Inertia-Deflection: Ix (in ⁴)	1.230
Section Modulus: Sx (in ³)	0.341

MOMENTS

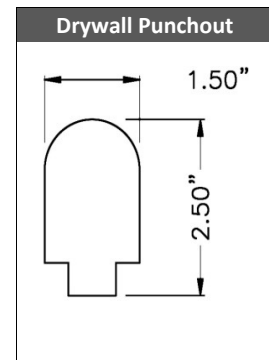
Allowable Bending Moment: Ma (in-k)	5.950
Local Buckling Nominal Moment: Mnl (in-k)	11.30
Distortional Buckling Moment: Mnd (in-k)	9.930

LIMITING HEIGHTS - COMPOSITE (ft-in)

Spacing (in)	5 psf			7.5 psf			10 psf		
	L/120	L/240	L/360	L/120	L/240	L/360	L/120	L/240	L/360
12	31-10	26-9	23-4	26-0	23-4	20-5	22-6	21-3	18-6
16	27-7	24-4	21-3	22-6	21-3	18-6	19-6	19-3	16-10
24	22-6	21-3	18-6	18-5	18-5	16-2	15-11	15-11	14-8

Composite heights sheathed both sides full height with 5/8" Type X wallboard applied vertically.

Acceptable wallboards are 5/8" type X from: USG, National, GP, Temple, American, Continental & CertainTeed



CODES & STANDARDS

- Meets IBC 2009, 2012, 2015 & FBC 2017
- Meets or tested to: ASTM C 645, C 754, E 90, E 119 & AISI S220-11
- Galvanized steel sheet meets ASTM A 1003 & A 653
- Third Party Code Evaluation Report: ICC ES ESR#2620
- Multiple Fire Rated Assemblies

GREEN INFO

- LEED v3 & LEED v4 credits available
- Contact Technical Services for more information



For more information, please contact Marino\WARE Technical Services at 866-545-1545

This technical information reflects the most current information available and supersedes any and all publications, effective 01/30/18.
©Copyright 2018 by Ware Industries, Inc. All rights reserved