

# Marino\WARE® Product Submittal Data

**PRODUCT NAME:** 400VS125-33

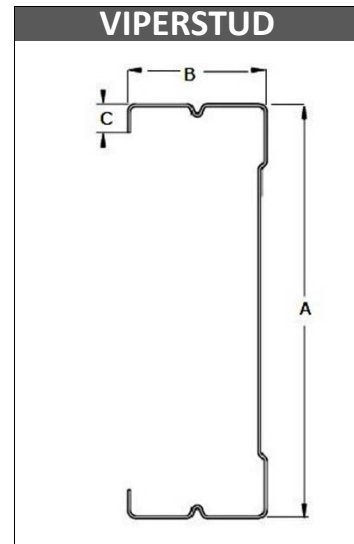
**MARINO\WARE PART #** 400VS33



**PROPERTIES:**

<b>A. Web (in)</b>	4	<b>Yield Strength Fy (KSI)</b>	33
<b>B. Flange (in)</b>	1-1/4	<b>Design Thickness (in)</b>	0.0346
<b>C. Lip (in)</b>	1/4"	<b>Minimum Thickness (in)</b>	0.0329
<b>Mils</b>	33	<b>Gauge</b>	20 STR
<b>Finish</b>	G60		

09.22.16 Non-Structural Metal Stud



**SECTION PROPERTIES**

**GROSS SECTION PROPERTIES**

Weight of Member: (lb/ft)	0.780
Cross Sectional Area: <b>A</b> (in <sup>2</sup> )	0.230
Moment of Inertia: <b>Ix</b> (in <sup>4</sup> )	0.544
Radius of Gyration: <b>Rx</b> (in)	1.540
Gross Moment of Inertia: <b>Iy</b> (in <sup>4</sup> )	0.041
Gross Radius of Gyration: <b>Ry</b> (in)	0.424

**EFFECTIVE SECTION PROPERTIES**

Moment of Inertia-Deflection: <b>Ix</b> (in <sup>4</sup> )	0.539
Section Modulus: <b>Sx</b> (in <sup>3</sup> )	0.224

**MOMENTS**

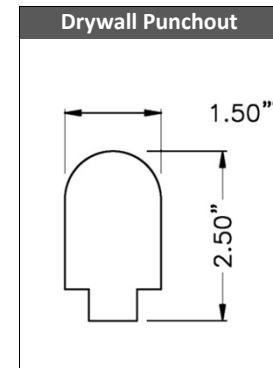
Allowable Bending Moment: <b>Ma</b> (in-k)	4.420
Local Buckling Nominal Moment: <b>Mnl</b> (in-k)	7.380
Distortional Buckling Moment: <b>Mnd</b> (in-k)	7.530

**LIMITING HEIGHTS - COMPOSITE (ft-in)**

Spacing (in)	5 psf			7.5 psf			10 psf		
	L/120	L/240	L/360	L/120	L/240	L/360	L/120	L/240	L/360
12	25-8	20-4	17-10	22-5	17-10	15-7	20-4	16-2	14-1
16	23-4	18-6	16-2	20-4	16-2	14-1	18-4	14-8	12-10
24	20-4	16-2	14-1	17-3	14-1	12-4	15	12-10	11-2

Composite heights sheathed both sides full height with 5/8" Type X wallboard applied vertically.

Acceptable wallboards are 5/8" type X from: USG, National, GP, Temple, American, Continental & CertainTeed



**CODES & STANDARDS**

- Meets IBC 2009, 2012, 2015 & FBC 2017
- Meets or tested to: ASTM C 645, C 754, E 90, E 119 & AISI S220-11
- Galvanized steel sheet meets ASTM A 1003 & A 653
- Third Party Code Evaluation Report: ICC ES ESR#2620
- Multiple Fire Rated Assemblies

**GREEN INFO**

- LEED v3 & LEED v4 credits available
- Contact Technical Services for more information



For more information, please contact Marino\WARE Technical Services at 866-545-1545

This technical information reflects the most current information available and supersedes any and all publications, effective 1/30/2018. ©Copyright 2018 by Ware Industries, Inc. All rights reserved