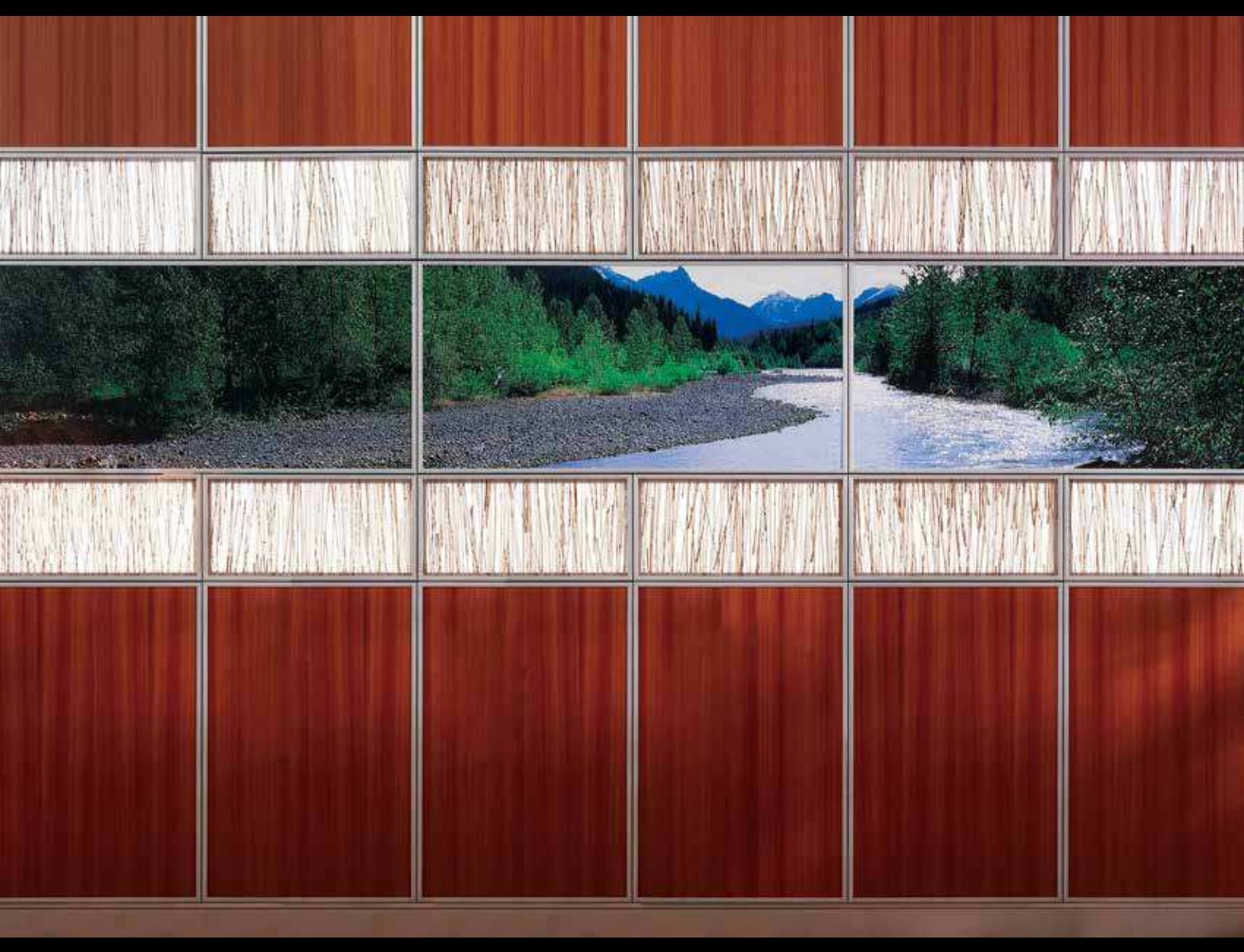


# DESIGNER WALL SYSTEMS

*Feature Walls that Make a Statement*



Myriad™ • Volta™ • Volta™ Flex





# Feature Walls

## *Markets Served*

Healthcare Facilities  
Schools & Universities  
Restaurants  
Hotels & Casinos  
Houses of Worship

Transportation Terminals  
Office & Residential Buildings  
Fitness Centers & Spas  
Grocery, Convenience & Drug Stores  
Government Buildings



# Walls That *WOW*

**Feature Walls:** Focal areas and special accent walls. Perfect for branding.

Artistic  
Impactful  
Stunning  
Attention Getting  
Dynamic  
Elegant  
Impressive





# Astonishing *Impact*

***Use Marlite Designer Wall Systems*** to bring excitement and energy to feature walls or highlight your corporate identity or brand with one-of-a-kind artistry. Marlite's extensive array of products for focal walls makes installing panels on vertical surfaces simple. Each system provides endless possibilities to create astonishing impact for special spaces.





## Myriad™

### *Shed Light on Design*

Opaque, transparent and translucent finishes come to life within the pre-engineered “snap-fit” framing system and the industry’s simplest LED lighting solution.



## Volta™

### *Dimensional Art*

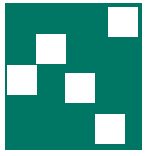
Sculpted MDF panels are carved in contiguous flowing patterns to create bold, exciting vertical works of art.



## Volta™ Flex

### *Fun and Flexible*

Dimensional patterns and finish options are available in lightweight and flexible thermoplastic sheets.



# Myriad™

Myriad provides an ensemble of pre-manufactured panels with choices in opaque, transparent and translucent materials within a “snap-fit” framing system. The system features pre-installed LED backlighting components making illumination simple.

## Features and Benefits

- Select virtually any finish or material to use within the Myriad framing system to achieve amazing aesthetics.
- LED lighting components ship pre-installed into the “snap-fit” aluminum framing system to brighten space.
- The rugged hardware accommodates panels up to 48” x 48” and panel thickness up to 3/4”.
- Only simple tools are required to install the wall rails and assemble – or change – the panels.

Panel Sizes – 12” x 12” minimum  
48” x 48” maximum

Panel Thickness – 3/32” minimum  
3/4” maximum







Shed Light on  
*Design*

## Myriad Finishes

### Translucent Materials



40% recycled content, encapsulates translucent color, organic materials, sheer textiles and embossed textures within translucent panels.



LuxCore

LuxCore offers ultra-rigid and abrasion resistant panels at the lowest industry price, with no minimum order requirements.



The superior toughness is the result of reinforcement by a strong web of glass fibers. The designer panels' fibers are deliberately visible, lending a "silken cobweb" effect.



Chrysalis HD is inspired by the clean design of architectural glass, allowing your project to make maximum use of natural environmental light.



## Other Finishes and Materials



### Graphic Designs

Choose your own graphics or let Marlite source the art. Simply submit high resolution files to create a stunning wall of art.



### Perforated Metals

Perforated and expanded metal, wire mesh and grating for dynamic effects.



### Wood Veneers

Automated stain and top coat precision applied to the most select AA grade veneer.



### Azure™ Woods

Exclusive imaging process creates real wood brilliance without the environmental impact.



### Marlite Finish

Richly detailed wood grain prints are economical and easy to maintain.



### Metal Panels

Wide ranging palette varies from soft and natural to dominant and bold.



### High Pressure Laminates

Thousands of laminates are available from all the major national brands.



### Volta Panels

Sculpted MDF panels are carved in contiguous flowing patterns to create bold, exciting vertical works of art.

## *Myriad LED Illumination*

LED lighting comes pre-installed within the frame structure for turn-key illumination. Each panel has direct connection to power supply.

Color Temperature – 5800K

Power Adaptors – 12V plug-in and play power transformer  
1A, 12W, UL Listed

Accessories – 2/3/4/6-way short spider cables connect multiple runs to a single power supply.







**Myriad trim selections** ensure a perfect fit and finish on edges, corners and base. Trim is available in flat profiles with a choice of clear satin anodized or black satin anodized finishes.



**Flat Profile Frame**  
KL1699F



**Linear Edge**  
L1670



**Wall Rail**  
KL1501



**Inside Corner**  
KL1651



**Outside Corner**  
KL1660

# Myriad Installation

**Myriad's pre-engineered hardware system** consists of extruded aluminum framework, "snap-fit" fasteners, wall rails and linear trim. Installation is fast, secure and easy to change when desired.



Proprietary wall rails install using ordinary tools.



Unique panel framing holds decorative panels with standard "snap-fit" fasteners.





Panels fit smoothly and snap securely into the wall framework.



Panels are easily installed with little effort.



Basic plastic tool is used to remove panels when change is desired.



# Volta™

Volta panels are carved designs on Medium Density Fiberboard (MDF) offering exquisite appeal and a sturdy core material. With a multitude of pattern designs and finish options, it's easy to create a unique "sculpture" for your walls.

---

## Features and Benefits

- 16 featured pattern designs and 4 finish options combine to give great flexibility in creating a one-of-a-kind piece of art.
- The MDF core provides vivid depth variation and panel strength for touch-point integrity.
- Multiple installation options add even more visual and application versatility.

Panel Sizes – 48" x 96"

Panel Thickness – 3/8" to 3/4", depending on pattern type







Dimensional  
*Art*

## ***Volta Pattern Options***

Color has been added to patterns for effect. Incorporate any color desired. See Finish options on page 18 for more information.



***Vipera***



***Mod***



***Cascade***



***Twisted***



***Hourglass***



***Ovalesque***



***Crimped***



***Beeline***

Actual product varies. The patterns shown here are reduced scale. For more patterns, visit [www.marlite.com](http://www.marlite.com). Not all patterns are available as samples.





*Windswept*



*Tydel*



*Escher*



*Jewel*



*Tipsy*



*Mosaic*



*Deco*



*Raindrop*



## Volta Finishes



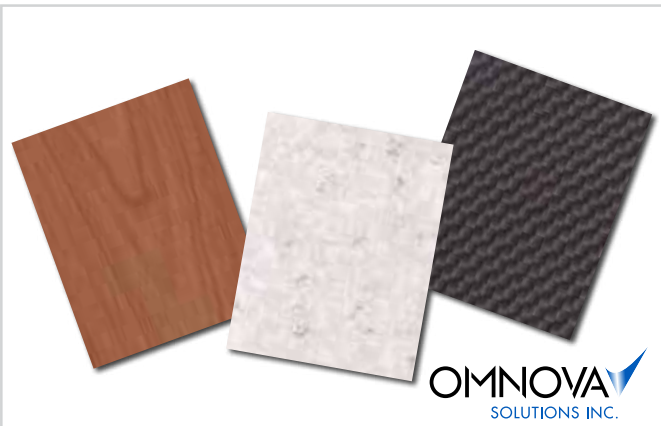
### ***Painted Finishes***

Two-part water-based enamel is low VOC and HAPS compliant. Available in satin or gloss finish, simply submit a color paint swatch.



### ***Powder Coated***

UV-cured single-step process applies 3-5 mils of coating. The VOC and HAPS compliant coating yields great durability and a metallic sparkle or satin finish. Send us a swatch, and we will provide a match. Note: 48" x 96"; 15 panel minimum order requirement.



### ***Vinyl Laminated***

Omnova Solutions offer a stunning selection of contours and textures. The durable and easy-to-clean surface maximizes impact. Visit [www.omnova.com](http://www.omnova.com) to see the complete selection. Note: 15 panel minimum order requirement.



### ***Printed Panels***

Send us a high resolution image or let Marlite source the artwork for you. Inspiring images coupled with the dimensional beauty of our patterned panels ensure personalized appeal.

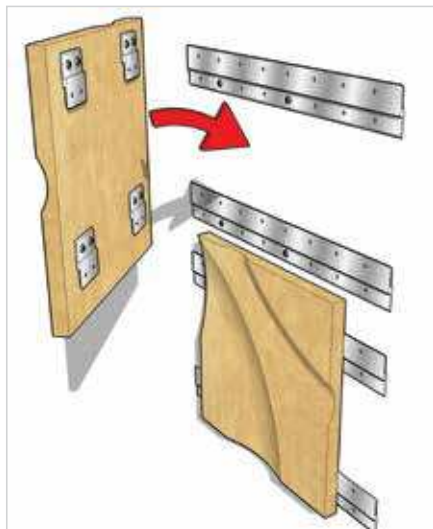
Note: Raw MDF Volta Panels are also available for field finishing.



# Volta Installation

**Volta Panels** can be installed using the pre-engineered framework of Marlite Surface Systems or Myriad for visual breaks between panels. Or utilize wood/metal cleats for stand-alone artwork. The ideal method is contingent upon the specific aesthetic desired.

Wood/Metal Cleat Installation



Myriad Framework Installation





# Volta™ Flex

Volta Flex Panels are lightweight thermoplastic sheets available in a wide variety of patterns and finishes. The flexible sheets can be rolled for shipping, yet are completely rigid when laminated. Volta Flex is an economical way to bring unique design to vertical spaces.

## Features and Benefits

- 20 featured pattern designs and 9 finish options combine to maximize design possibilities.
- Thermoplastic panels are resistant to impact, abrasion and stains and offer protection from UV damage and most chemicals.
- Lightweight panels are only 1/4 pound per square foot.
- Panels are easy-to-cut and are simply applied to the wall using adhesive.

Panel Sizes – 48" x 96"

Panel Thickness – .062", thickness may vary depending on pattern

Ratings – Class 1/A Fire-rating (ASTM – E84)







Fun and  
*Flexible*

**Volta Flex Pattern Options**

Color has been added to patterns for effect. Choose from one of eleven standard colors on page 24.



*Vipera - F*



*Twisted- F*



*Cayman- F*



*Gobi Vertical- F*



*Cascade - F*



*Jewel- F*



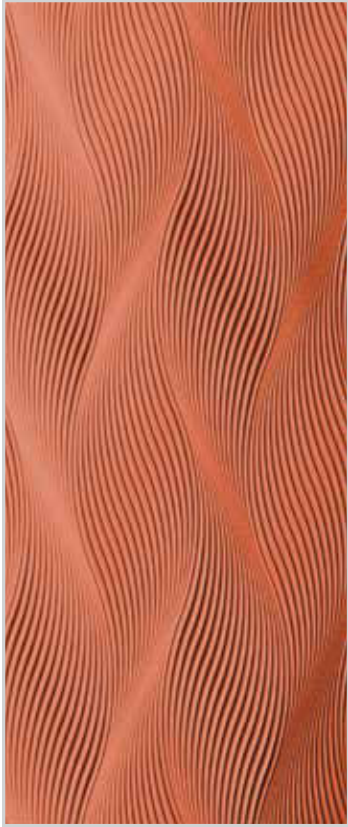
*Tydel - F*



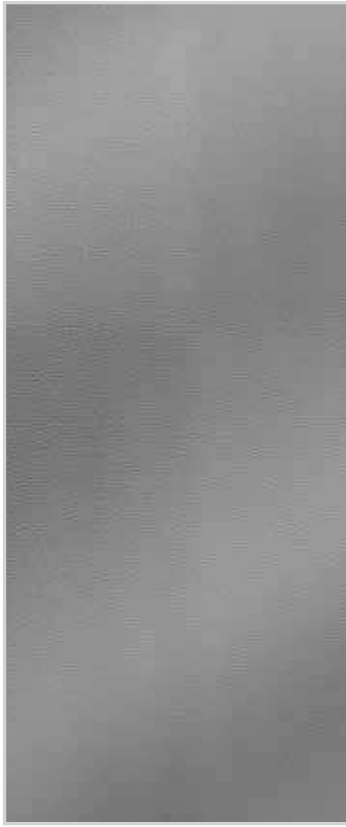
*Nettle- F*

Actual product varies. The patterns shown here are reduced for scale.

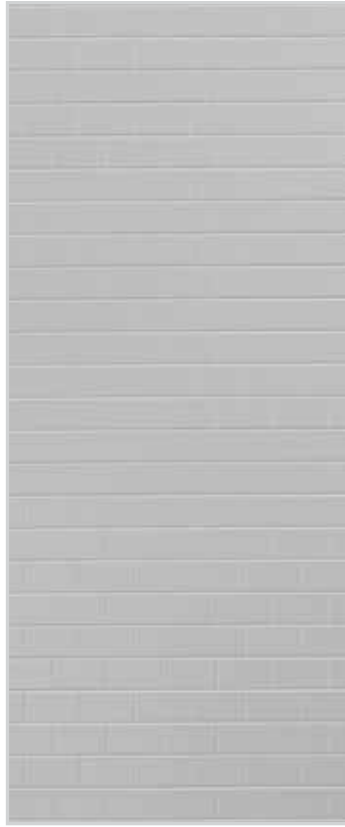




*Windswept - F*



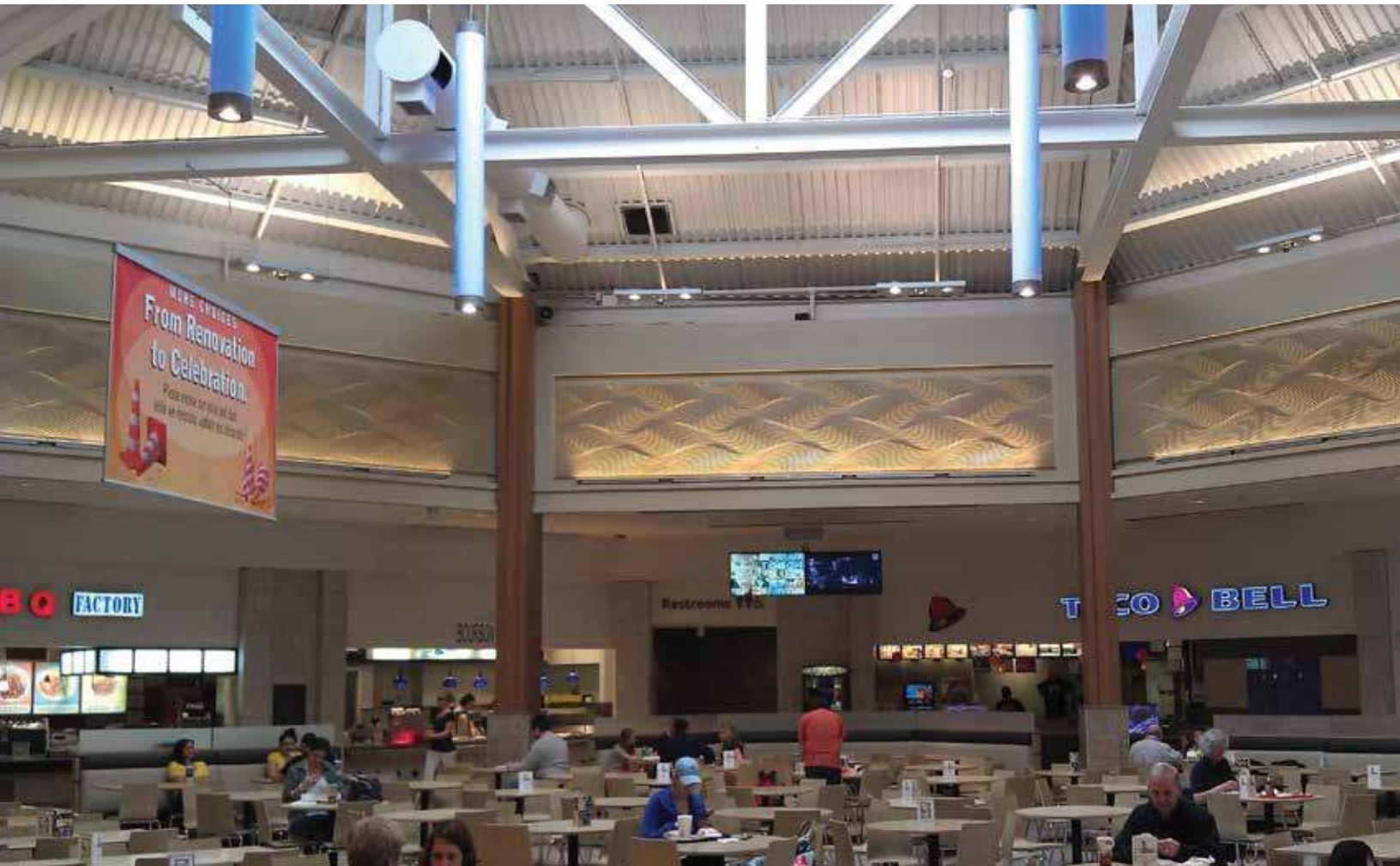
*Strike- F*



*Subway- F*



*Tetrus- F*





*Volta Flex Finishes*



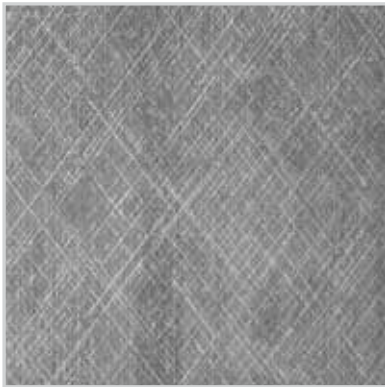
*Argent Bronze*



*Bermuda Bronze*



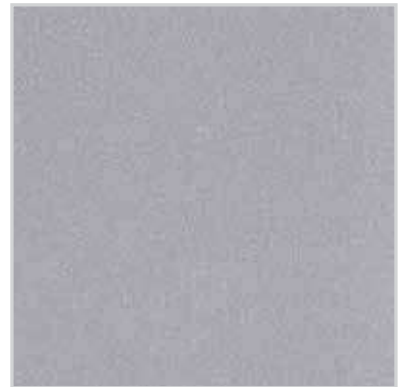
*Brushed Copper*



*Crosshatch Silver*



*Oiled Bronze*



*Argent Silver*



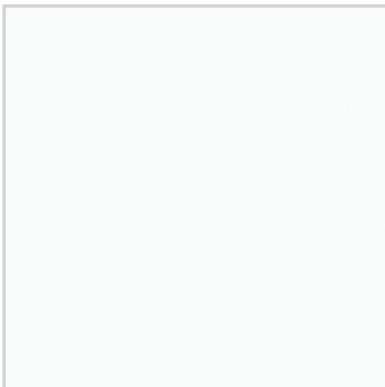
*Galvanized*



*Linen Beige*



*Brushed Stainless*



*Gloss White*



*Muted Gold*

# Volta Flex Installation

**Volta Flex** panels can be cut with simple shears or a razor knife. The panels are applied to the wall using adhesive.



Apply Marlite adhesive evenly to the wall using a trowel.



Starting with the bottom of the panel, apply to the wall.



Press the panel against the wall.



Apply pressure evenly on different parts of the panel to ensure adhesion.



Coordinating trim available







Marlite offers other dynamic products for commercial interiors. Please visit [www.marlite.com](http://www.marlite.com) for more details.

# Walls That *welcome*



*Primary Spaces:* Atriums, lobbies, main corridors, executive suites, conference rooms, offices

Surface Systems®  
Modules™  
Sieva™

# Walls That *work*



*Secondary Spaces:* Dining rooms, patient rooms, gymnasiums, kitchens, restrooms

Induro™ FRP  
Artizan™ FRP  
Symmetrix™ FRP  
Envue™ FRP

Standard FRP  
Plank and Panels  
Strata Panels



Dover, Ohio 44622  
www.marlite.com

Ph: 800.377.1221  
info@marlite.com

Form No. DC120-03171

Effective Date: 03/31/17

Printed in USA

Marlite is committed to protecting our environment and sustaining resources for future generations.

Printed on Recycled Paper