

ReNu™ Installation Instructions

- Decorative thermoplastic strips are precisely cut to fit Marlite Slatwall.
- Supplied in 4' long strips with a pressure sensitive adhesive backing for easy installation.
- Apply on existing slatwall without closing the store or removing panels.
- Follow the steps below to transform your slatwall merchandising panels to a new updated look.

Step 1 - Clean & Dry



Step 2 - Check Length

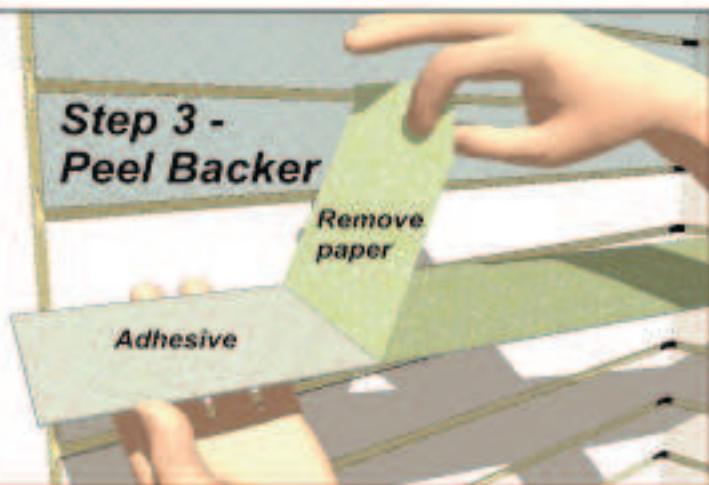
Note: Cut ReNu Strips with heavy scissors or utility knife.



Step 3 - Peel Backer

Remove paper

Adhesive



Note: Align the top edge of ReNu Strip with the bottom edge of slots, so they don't interfere with hardware.

Step 4 - Align & Press That's it!



*Add a finishing touch
with Marlite ColorSnaps!*

*Note: ColorSnaps install from
the front, without tools.*

For non-inserted panels



- Cover entire panels or just feature areas
- High impact, scratch resistant
- Can be used with the inserted or non-inserted Slatwall series
- Available in 4 patterns in 4 different finishes
- Made with pride in the USA.

www.marlite.com
info@marlite.com
DW53-09091 09/01/09

SLATWALL