

SLATWALL AND SLATWALL EQ

Reliable, Affordable Merchandising





Secondary Spaces

Markets Served

Retail Stores
Healthcare Facilities
Schools & Universities
Restaurants
Hotels & Casinos

Houses of Worship
Transportation Terminals
Office & Residential Buildings
Fitness Centers & Spas
Grocery, Convenience & Drug Stores

Walls That *work*

Secondary Spaces: Dining rooms, patient rooms, fitness areas, kitchens, restrooms, merchandising displays, service counters

Functional
Easy to Clean
Safe
Secure
Protective
Useful



Slatwall and Slatwall EQ

Marlite Slatwall is one of the most widely used economical and functional retail merchandising systems in the industry. Marlite offers a variety of solutions that provide load capacities to meet your requirements and finishes to complete your design. Slatwall is ideal for all types of apparel, specialty items, shoes and other horizontal displays.

Step 1: Choose the Panel Core



Marlite Slatwall

- Uses industry-wide standard MDF.
- Provides the greatest flexibility and excellent performance.
- Made in the USA.



Slatwall EQ

- Uses high pine content particleboard core.
 - Possesses panel hang-strength equal to or better than conventional slatwall.
 - Is economically priced less than MDF slatwall.
 - Carries the following certifications and attributes: Carb exempt, 100% post-industrial recycled/recovered content, NAF - no added formaldehyde
 - Made in the USA.
 - Available upon request: SGSNA, FSC
-

Step 2: Choose the Finish



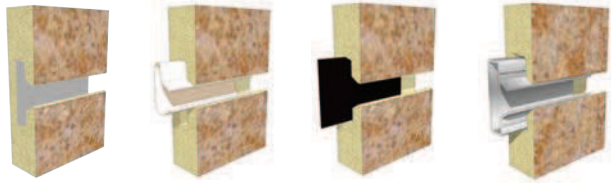
Slatwall Selections

- Low Pressure Melamine (LPM)
- High Pressure Laminate (HPL)
- Paint Ready Finish
- Marlite Finish
- Painted Finish
- Specialty Finishes
- Graphic Panels

Slatwall EQ Selections

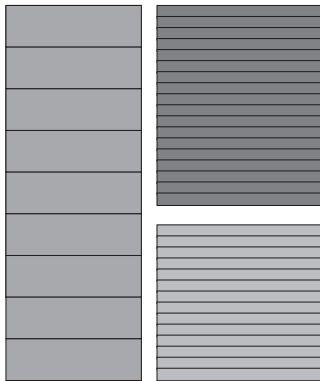
- Low Pressure Melamine (LPM)
- High Pressure Laminate (HPL)
- Paint Grade

Step 3: Choose the Groove Treatment



Marlite offers the most choices for grooves. Keep things basic with raw or painted grooves. Add a splash of color with trim strips, ColorSnaps™ or vinyl inserts. Or add load capacity with aluminum inserts.

Step 4: Choose the Panel Size and Configuration



Multiple panel sizes, shapes and groove spacing options provide the ultimate in custom design.





Slatwall Finish Options

All grain patterns on Slatwall run the 8' dimension.

Marlite Finish



310 Sierra Maple



317 Alum Rock Maple



318 Windsor Anigre



319 Whittier Anigre



342 Champagne Maple

Painted Finish



703 Brite White



415 Frost White



515 Almond



764 Crystal Gray

Specialty Finishes



020 Red Oak Veneer



041 White Birch Veneer



601 Clear Mirrored Acrylic



Printed Graphics

Other Available Options

Graphic Designs

Creating a stunning custom graphic wall has never been easier. Simply provide high resolution art and Marlite will bring it to life. Photographs, logos, artwork or abstract patterns – from subtle accents to breathtaking graphics large enough to cover an entire wall – Marlite delivers.

Slatwall & Slatwall EQ Finish Options

Low Pressure Melamine



750 Goshen White LPM



751 Stone Gray LPM



742 Tornado Gray LPM



744 Swiss Almond LPM



844 Trojan Black LPM



738 Brushed Aluminum LPM



975 Cherry LPM



692 Fine Oak LPM



711 Linn Birch LPM



687 Hard Maple LPM



872 Mahogany LPM



874 Pearwood LPM

Paint Grade



001 Paint Grade

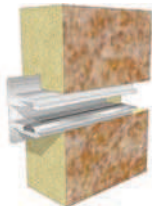
Other Available Options

High Pressure Laminates

High Pressure Laminate (HPL) offers decorative finishes with excellent durability. Select from an array of woodgrains, abstracts and metallic laminates from any major brand.



Groove Options



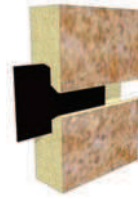
1000 Series Slatwall
Light duty-holds 1/4"
glass or acrylic
shelving.



2000 Series Slatwall
Painted grooves.
Factory painted.



2000 Series Slatwall
Vinyl ColorSnaps™ -
white, red,
platinum, black,
ivory.
Field install.

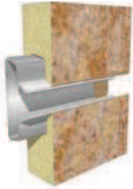


2000 Series Slatwall
Vinyl trimstrips -
white, black.
Field install.



2000 Series Slatwall
Medium duty-
aluminum inserts mill
finish.
Field install.

* For Metal
accessories only.

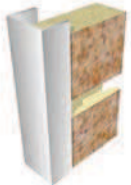


5000 Series Slatwall
Light duty-vinyl
inserts-
white, black.
Factory installed.

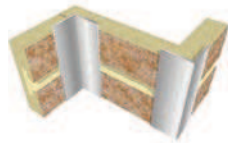


7000 Series Slatwall
Medium duty-
aluminum
inserts-mill, black.
Factory installed.

Trim



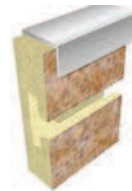
A770 Aluminum Edge
1/2" x 13/16" x 96"
Mill Finish



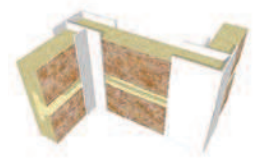
A760 Aluminum
Inside/Outside Corner
1" x 1" x 96"
Mill Finish



W770 Wood Edge
9/16" x 1" x 96"
Poplar Field Finish



P770 PVC Edge
7/8" x 1/2" x 96"
D100 White
D101 Black
D109 Gray



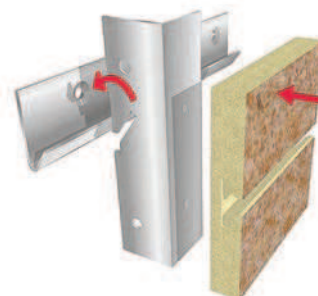
P760 PVC
Inside/Outside Corner
1 3/8" x 1 3/8" x 96"
D100 White
D109 Gray

Installation Rail Assembly

Combination - Mounting track and panel bar create Marlite Rail Assembly.
Mounting track and panel bar are predrilled for easy installation.



Color Match Screws
1000 pcs/box
#6 - 1 5/8"
415 Frost White



Mounting Track
5/8" x 1 7/8" x 96"
Steel, Silver, Powder Coat

Panel Bar
1 1/2" x 1 1/2" x 84"
Silver, Powder Coat

Standard Panel Size and Configurations

Horizontal Panel Format:

- 4' x 8' – 3" on-center grooves (48"H x 96"W x 3/4"T)
- Long edges have half groove to facilitate concealed joints and vertical stacking.
- Short edges (48") are square cut.



Vertical Panel Format:

- 8' x 4' – 3" on-center grooves (96"H x 48"W x 3/4"T)
- All edges are square cut.



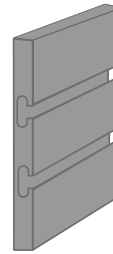
Custom Capabilities

Custom Panels:

- Custom sizes available up to 5' x 10' or 10' x 5'
- Custom edge machining available
- Custom slot lengths and spacing available

Machining:

- Standard groove: 3" on-center
- Optional groove spacing available. Examples include 4", 6", 8" or 12" on-center. Grid/Brick grooves available.
- Grid any on-center groove (groove in both directions). Horizontal and vertical patterns are available, as well as curves and irregular shapes.
- Edge machining for both decorative and installation purposes are available to help you minimize jobsite fabrication.
- Special tenons, rabbets, borings, mortising or other machining are available upon request.



Distance between grooves is measured from the center of each groove.



Dado cuts and other types of customized machining are available.



Grooves can be placed on both sides of the panels.



Edge machining and radius corners can help minimize jobsite work.

Custom Panels and Shelving

Panels:

- Finish: Low Pressure Melamine, High Pressure Laminate, Painted
- Thickness: 3/4", 1/2", 3/8", 1/4"*
*Painted and low pressure melamine only
- Type: MDF, HDF, Particle Board
- Edge Treatment: High Pressure Laminate, PVC, Painted (1/4" raw edge only)
- Size: cut to size

Shelves:

- Finish: Low Pressure Melamine, High Pressure Laminate
- Thickness: 3/4"
- Type: MDF, Particle Board
- Edge Treatment: High Pressure Laminate, PVC, Painted
- Size: cut to size

Marlite offers other dynamic products for commercial interiors. Please visit www.marlite.com for more details.

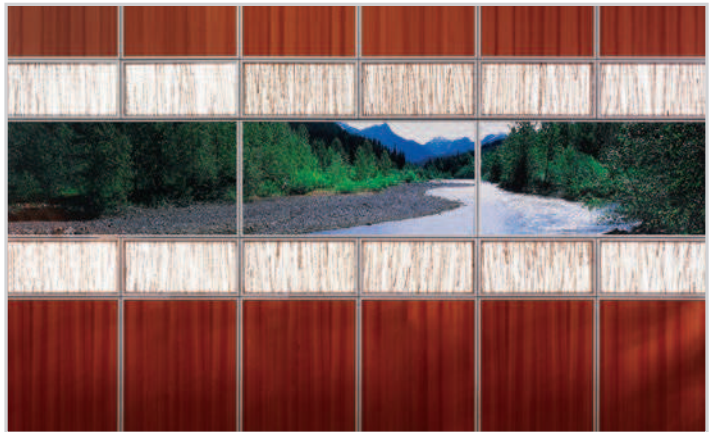
Walls That *welcome*



Primary Spaces: Atriums, lobbies, main corridors, executive suites, conference rooms, offices

Surface Systems®
Modules™
Sieva™

Walls That *wow*



Feature Walls: Focal areas and special accent walls. Perfect for branding.

Myriad™
Volta™
Volta Flex™

Walls That *work*



Secondary Spaces: Dining rooms, patient rooms, gymnasiums, kitchens, restrooms

Induro FRP
Artizan FRP
Symmetrix FRP
Envue FRP

Standard FRP
Plank and Panels
Slatwall
Slatwall EQ





Dover, Ohio 44622
www.marlite.com

Ph: 800.377.1221
info@marlite.com

Form No. DW56-08151

Effective Date: 08/31/15

Printed in USA

Marlite is committed to protecting our environment and sustaining resources for future generations.

Printed on Recycled Paper