

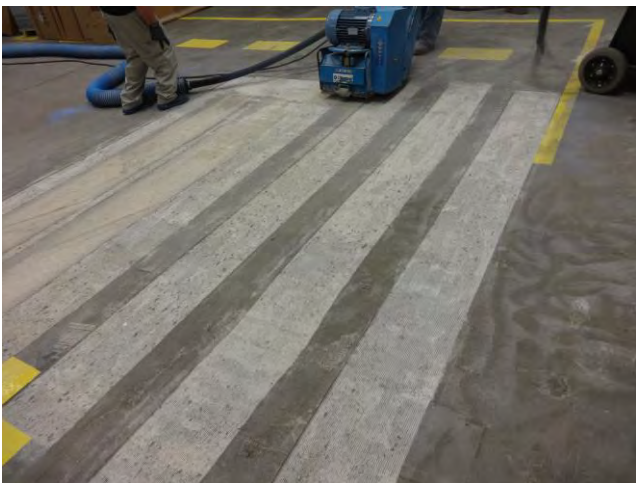
**Step by Step Process Outline**



Deteriorated concrete needing to be resurfaced.



Closer look at deteriorated area



Profiling damaged surface with concrete shaver



Profiled area. Edges squared up – no feather edging.



15 Gallon Mixer



Side View of Mixer

## Step by Step Process Outline Page 2



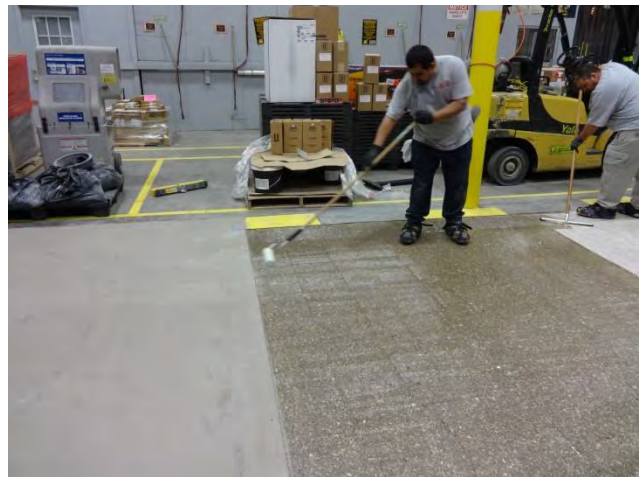
Toter/Wheelbarrow for product placement



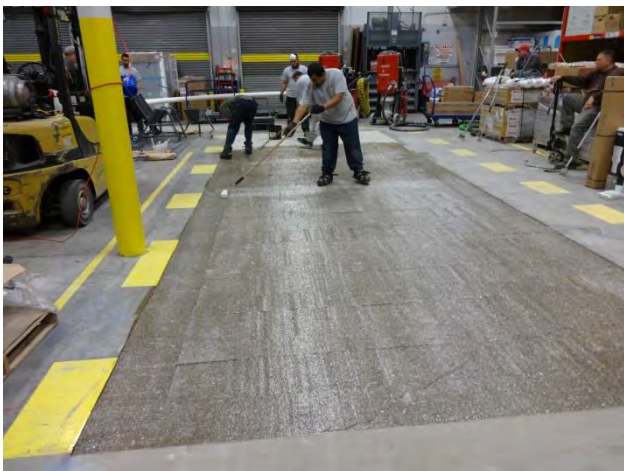
Applying AH HDR Primer with rubber squeegee



Brush application to get the edges that squeegee couldn't



Rolling out primer to get extra that squeegee left behind



Larger area primed



Preparing to place AH HDR into screed box

# ARMOR-HARD HDR

HEAVY DUTY RESURFACER

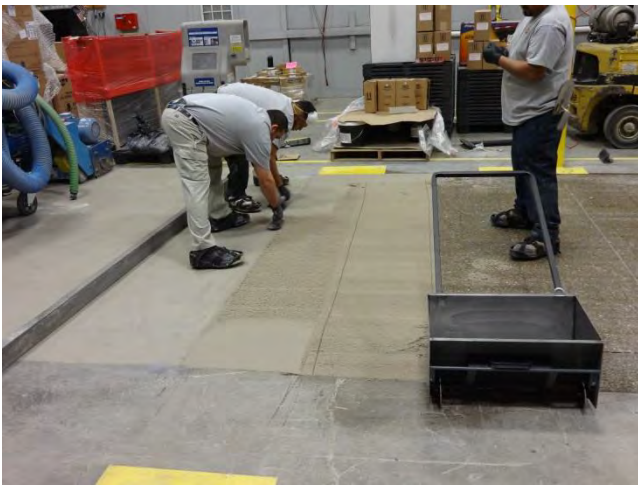
## Step by Step Process Outline



Dumping AH HDR mortar into screed box



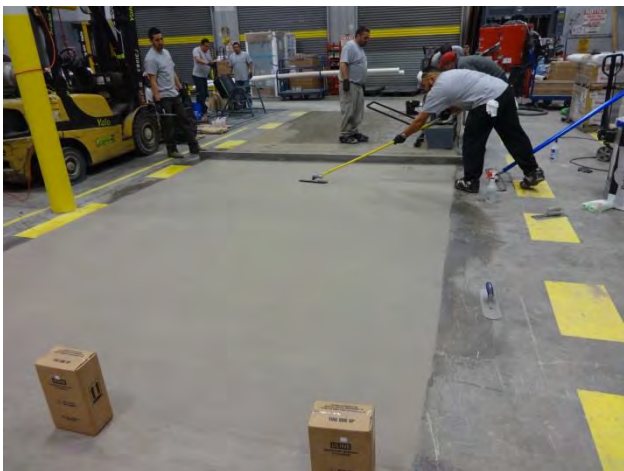
Dropping AH HDR out of the screed box



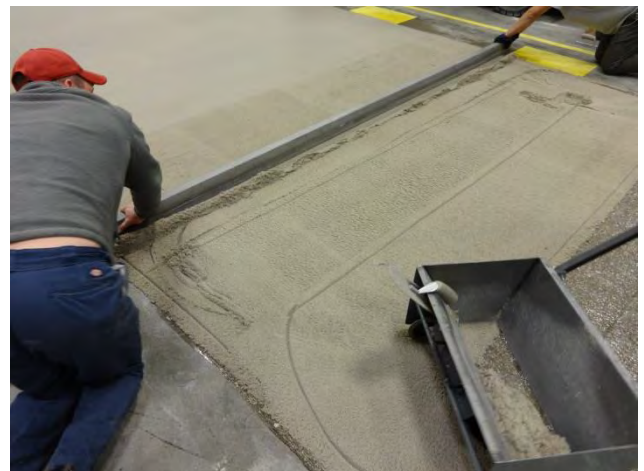
Hand troweling edges of placed AH HDR



Troweling AH HDR behind the screed box



Troweled out area



Hand screeding to get a flat surface due to profile variation

# ARMOR-HARD HDR

HEAVY DUTY RESURFACER

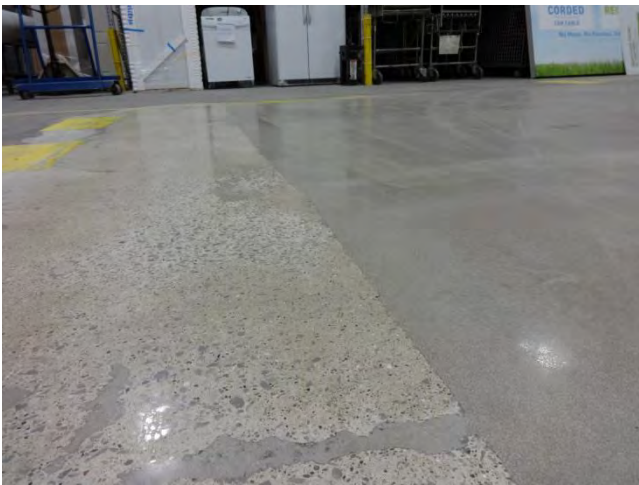
## Step by Step Process Outline



Grinding AH HDR next morning



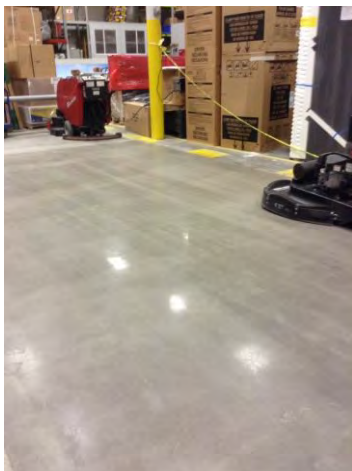
Close up of ground AH HDR



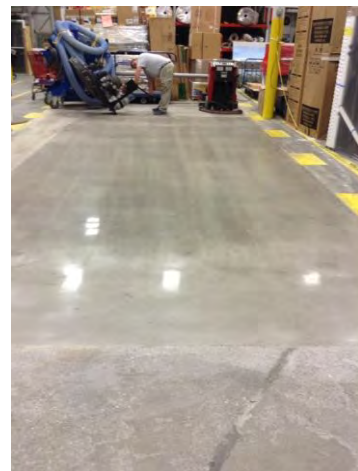
AH HDR area after grinding/polishing



Polished AH HDR



Finished result after burnishing



Additional view of finishing result