

# TPO

ROOFING SYSTEMS



*"The name trusted in roofing since 1906"*



## OUR PROMISE

### **THROUGH ONGOING INTERCHANGE OF EXPERIENCES WITH CONTRACTORS, MULE-HIDE KEEPS ON TOP OF THE LATEST ROOFING REQUIREMENTS AND SOLUTIONS**

Trusted in roofing since 1906, Mule-Hide is the right choice for all kinds of installations. Our time-tested and proven systems are affordable and easy to install, and they meet even the strictest demands of today's commercial, industrial, and institutional buildings.

We can help you with everything from membrane selection to determining the best way to ensure a watertight roof. And because providing total roofing systems is our business, you can count on Mule-Hide to ensure the compatibility and performance of any and every component you choose.

## WARRANTY PROGRAM

Mule-Hide offers a variety of warranties for Commercial and Residential projects including material and system warranties. System warranties are available for commercial projects when installed in strict compliance with Mule-Hide's specifications by a Mule-Hide Warranty Eligible Contractor. Residential projects may qualify for material warranties. Complete warranty information and requirements for the various warranties available may be found on the Mule-Hide web site at [www.mulehide.com](http://www.mulehide.com) or by contacting Mule-Hide at 800-786-1492.

## SYSTEM BENEFITS

### **EASY TO INSTALL**

Mule-Hide TPO Roofing Systems install quickly and economically. UL & FM listed assemblies are available upon request. All the accessories you need to complete roof details around edges and penetrations are also stocked locally.

### **ENERGY EFFICIENT ROOFS**

White surfaces have been shown to reflect up to 78% of the sun's rays to reduce air-conditioning costs. The superb reflectivity of white TPO even reduces the heat build-up under the membrane.

### **THE BEST LIFECYCLE**

TPO provides excellent resistance to fire, UV, airborne bacteria, and industrial pollutants such as air-conditioning coolants. Contains no chlorine, a plus for the environment.

### **LOWER LABOR COSTS**

Available in widths of 8', 10', and 12' for less seams and less labor compared to standard PVC sheets.

### **THICKER TOP PLY**

More product on top of the scrim where you need it most, one of the thickest top plies in the industry.

### **STRENGTH**

Keeps moisture out, yet lightweight, making it ideal for new construction and retrofit installations without adding excessive weight to the roof deck. TPO can handle the desert sun, sand, arctic freezes, and torrential downpours. Stands up to rooftop traffic, tools, and equipment.

### **FLEXIBILITY**

The membrane remains flexible in hot and cold temperatures so it will not split or crack.

### **REPAIRABLE**

TPO membrane remains repairable year after year, allowing for ease of future cutouts, alterations and tie-ins. Can be cleaned to retain like - new appearance.

## PRODUCT INFORMATION

### THE AFFORDABLE WHITE ROOF

#### INSTALLED COST VALUE

Other white membranes command a premium price, but thanks to manufacturing technology originally developed in the automotive industry (impact and UV resistant bumpers), a Mule-Hide TPO Roof is "The Affordable White Roof".

#### REINFORCED TPO

- White, gray, tan (other colors by special order)
- Also available in Fleece Back versions
- Thermoplastic polyolefin based for superior strength and weatherability
- Lightweight yet highly resistant to tears, impact, punctures, & wind uplift
- Ideal for both new construction and reroofing
- Reinforced membrane easily handles building thermal expansion & contraction
- Meets or exceeds ASTM performance standards.

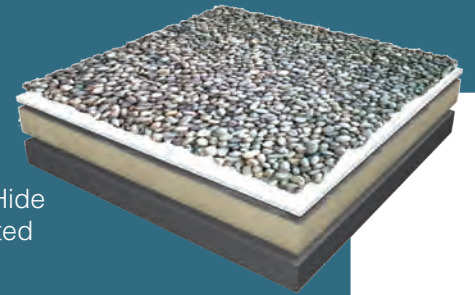
#### ENVIRONMENTALLY FRIENDLY

- No plasticizer migration
- No chlorine
- Recyclable

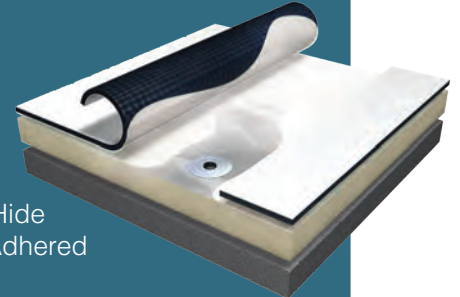
#### TPO WITH CLEAN FILM

Remove dirt and scuffs left behind during installation by installing a membrane with protective film.

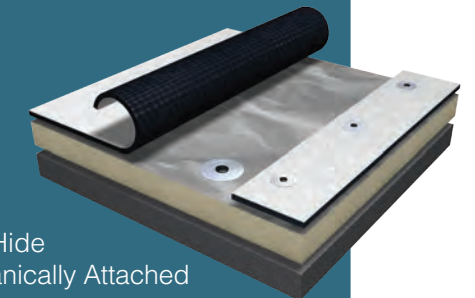
- Guard against damage and dirt pick-up due foot traffic
- Reduce roof glare during installation
- Ensure no loss of initial reflectivity immediately after instal due to dirty roof



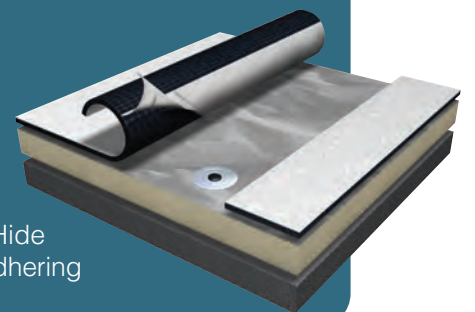
Mule-Hide  
Ballasted



Mule-Hide  
Fully Adhered



Mule-Hide  
Mechanically Attached



Mule-Hide  
Self-Adhering





## SELF-ADHERING TPO

### FASTER INSTALLATION

SA-TPO contains all the benefits of fully adhered, reinforced TPO plus labor savings with a solvent and odor-free factory-applied adhesive. Easy, consistent installation—up to 3 to 5 times faster than traditional TPO systems—resulting in a finished system with no membrane fluttering, decreased stress on fasteners, and less wrinkles.



When projects call for an alternative to traditional TPO membrane, SA-TPO is the solution contractors choose when:

- Stringent VOC regulations demand a VOC and odor-free roofing system.
- High-rise building installations require a lightweight membrane that is able to be transported to the roof using an elevator.
- Construction schedules necessitate a water-tight building as quickly as possible.

MATERIAL	MATERIAL THICKNESS	STANDARD WIDTH	STANDARD LENGTH	STANDARD COLORS	AVAILABLE WARRANTY
TPO-c Standard Membrane	45 mil	4' - 12'	100'	White, Gray, Tan	10, 15 yr
	60 mil	4' - 12'	100'	White, Gray, Tan	10, 15, 20 yr
TPO-c Extra Membrane	80 mil	4' - 12'	100'	White, Gray, Tan	10, 15, 20 yr
SA-TPO	60 mil	10'	50' - 100'	White	10, 15, 20 yr
TPO with CLEAN Film	60 mil	6', 10'	100'	White	10, 15, 20 yr
TPO-c Fleece Back Membrane	45 mil	6' - 12'	50' - 100'	White	10, 15 yr
	60 mil	6' - 12'	50' - 100'	White	10, 15, 20 yr
TPO-c Fleece Back Plus Membrane	45 mil	6' - 12'	50' - 100'	White	10, 15 yr
	60 mil	6' - 12'	50' - 100'	White	10, 15, 20 yr

This chart is used for a general guideline. Additional sizes and colors may be available. Please contact Mule-Hide Customer Service at 800-786-1492 or go to our website at [www.mulehide.com](http://www.mulehide.com) for specific product information.

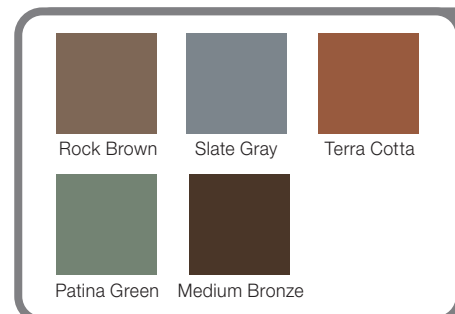
## TPO COLORWAY

### AN INDUSTRY EXCLUSIVE!

TPO Colorway membranes now have matching pre-fabricated accessories including split pipe boots, coated metal, conical boots, inside and outside corners, t-joint patches and more. Match your roof surface with complimentary edge metal colors for an architectural look and feel.

TPO Colorway is available in the following accessories:

- 60 Mil Non-Reinforced Flashing
- Rib Contours
- Coated Metal
- Universal Conical Boot
- Split Pipe Seals
- Outside Corners
- Inside Corners
- T-Joint Patches
- Square Tube Wraps
- Drop Scuppers
- Through Wall Scuppers
- Breather Vents
- Vent Collar Combo



*Special Color membranes will fade over time mainly due to the ultraviolet portion of sunlight. Most roof surfaces are exposed to variable sunlight, some areas will be more susceptible to color changes caused by UV fading. Warranties for Special Color membranes do not cover fading of colors.*



## FAQ'S

### **DOES THE CONTRACTOR NEED TO PROVIDE MATERIAL INVOICES ALONG WITH WARRANTY APPLICATIONS?**

Specific warranties may require submission of material invoices.

### **DOES MULE-HIDE REQUIRE A TOTAL TEAR-OFF FOR LABOR & MATERIAL ROOFING SYSTEM WARRANTIES?**

No, this is not required, but all areas of wet insulation and membrane must be replaced with new, dry, similar material, specific warranties may require an independent moisture scan of the roof.

### **DOES MULE-HIDE OFFER ANY PRE-JOB "WALK THE ROOF" OR JOB STARTS?**

Yes, Mule-Hide Territory Managers offer these services.

### **WHAT ARE THE WARRANTY FEES FOR HEAT-WELD ROOFING SYSTEMS?**

Fees vary depending on the type of warranty and duration desired. Current fees are listed on Mule-Hide Warranty Application Forms and on the website.

### **DO I NEED WALK PADS FOR A LARGE COMMERCIAL ROOFING PROJECT?**

Walk pads are always recommended. Mule-Hide offers walk pads for each system/membrane type we sell.

### **WHAT IF I NEED A SUBMITTAL PACKAGE?**

Contact your ABC Sales Associate, Mule-Hide Territory Manager or go to [www.mulehide.com](http://www.mulehide.com) and make a request online.

### **WHAT IF I NEED TO PROVE MULE-HIDE TPO, PVC OR DECTEC® WALKABLE PVC MEETS A WRITTEN SPECIFICATION OR COMPLIES WITH A UL, FM OR OTHER CODE REQUIREMENT?**

Just provide Mule-Hide with the following information:

- A copy of the specification
- Name & address to whom the letter should be addressed
- Your email, phone & fax number
- What is the UL/FM requirement?
- Deck type?
- Slope?
- Insulation type and thickness?
- Membrane and system?
- Building location and height?
- Overall dimensions?
- Parapet height?

## TPO ACCESSORIES



- TPO Bonding Adhesive (solvent based-amber – Low VOC version available)
- WBBA-2000 Water Based Contact Adhesive
- TPO Tape Primer (Low VOC version available)
- TPO Weathered Membrane Cleaner (clear)
- TPO Cut Edge Sealant (clear)
- TPO Detail Membrane (non-reinforced, white, gray, tan)
- TPO Flashing Strips (reinforced, white, gray, tan)
- TPO PS Cover Strip With Tape (white, gray, tan)
- TPO PS 6" and 10" RUSS With Tape
- TPO Premolded Pipe Seal
- TPO Universal Corners (fit inside or outside, white, gray, tan)
- TPO T-Joint Covers (white, gray)
- TPO Molded Sealant Pockets (white, gray, tan)
- TPO Molded Sealant Pocket Extension Legs (white, gray, tan)
- Thermoplastic (one-part) Pourable Sealer (white)
- TPO Coated Metal
- TPO Walkway Rolls (white, gray)
- Fastener Accessories – Drill Point and Thread Point (for insulation only) HDP & EHD Fasteners, Insulated Plates and Seam Plates
- All Purpose Bar – use as anchor, batten and termination bar
- Polyisocyanurate Insulation
- DensDeck®
- SECUROCK®



Contact Mule-Hide Products for specific product approvals and ratings. Featured industry association/organization logos are U.S. registered trademarks. Mule-Hide is an AIA registered CES provider. Energy Star is only valid in the United States for Roofing Products.

*“The name trusted in roofing since 1906”*

**Customer Line: 800-786-1492 • [www.mulehide.com](http://www.mulehide.com)**

*Check our website monthly for the latest updates & technical bulletins.*

**National Support Center • 1195 Prince Hall Drive • Beloit, WI 53511 • tel. 608.365.3111 • fax. 608.365.7852**

The information herein should not be considered all-inclusive and should always be accompanied by a review of the Mule-Hide specifications and guidelines and good application practices.

This information herein is based upon data and knowledge considered to be true and accurate at the time of printing and is provided for the reader's consideration, investigation and verification. No statement made by anyone may supersede this information, except when done in writing by Mule-Hide Products Co., Inc. Mule-Hide Products Co., Inc. does not warrant any results to be obtained. Statements concerning possible use of Mule-Hide products are made without knowledge of your particular roof and such an application may not be fit for your particular purpose. MULE-HIDE DISCLAIMS ALL WARRANTIES, INCLUDING THE IMPLIED WARRANTY OF MERCHANTABILITY AND FITNESS FOR A PARTICULAR PURPOSE, except written warranties attached to Mule-Hide products and written warranties signed by an officer of Mule-Hide.

Visit the Mule-Hide website at [www.mulehide.com](http://www.mulehide.com) prior to any installation for updated technical specifications and details. Mule-Hide is a U.S. registered trademark. DensDeck is wholly owned registered trademark of Georgia-Pacific Gypsum LLC/Georgia-Pacific Wood Products LLC. SECUROCK is wholly owned registered trademark of USG Corporation. All rights reserved.

