



Overview

Multicoat's HARD COAT STUCCO System combines the strength of its polymer modified cementitious base coat, STUCCO BASE, troweled into metal lathe to form a tough underlayment. On top of the base, Multicoat's Multi-Tex Stucco Mix which is a high build, flexible acrylic emulsion applied to form the finished appearance.

The HARD COAT STUCCO System is ideal for commercial or residential application where a tough exterior skin is required.

Surface Preparation

Substrate must be completely free from all grease, oil, paint, dirt, dust, laitance, sealers, curing compounds, water repellents and other foreign materials which may interfere with bonding. Substrate must be constructed and designed with all applicable building codes. Applicable building codes vary from region to region and the appropriate substrate should be used for your region. Please consult with project architect or engineer prior to commencing work.

SEE WARRANTY FOR MORE

INFORMATION

Application

Step 1: METAL LATHE Lay 2.5 galvanized metal lathe and black sulfur paper (or Tyvek house wrap) is attached to the substrate using corrosion resistant staples with a 7/8" crown, 5/8" length legs, spaced 3" on center in the field and 1" on center along all overlaps and the perimeter. Make sure the lathe does not mirror the substrate panel joints, minimum of 6" away.

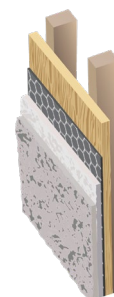
Step 2: STUCCO BASE furnished in 65-lb bags and is field mixed with clean water to the desired consistency required for application. Apply STUCCO BASE by trowel or spray, thick enough to cover the lathe, followed by a hard trowel technique to float the wall smooth. The outline of the lathe can be visible but should not be felt.

Step 3: MULTI-TEX STUCCO MIX Refer to Multicoat's MULTI-TEX STUCCO SYSTEM color chart for more information. Stucco Mix is furnished in 65-lb pails. A four (4) ounce bottle of color is supplied with each pail of stucco. After the color is mixed into the pail (instructions for color are furnished with each order) application can be performed by a variety of methods depending upon the desired finish and job site restrictions or limitations. Stucco Mix is available in three (3) grades; Smooth, Medium, and Coarse. Stucco Mix can be sprayed, pumped or troweled.

Proper expansion joints, weep screeds, control joints should be placed based on local building codes.

Quick Reference Guide

STEP	MATERIAL	PURPOSE	COVERAGE
1	Flashing/Metal Lath	Reinforcement Hardware	21 SqFt/Piece
2	Stucco Base	Metal Lath Base Coat	60-80 SqFt/Bag
3	Multi-Tex Stucco	Stucco	75-125 SqFt/Bucket



HARD COAT STUCCO SYSTEM

Coverage

Lathe: Furnished by others conforming to ASTM-C-1063 Specifications.

- **STUCCO BASE:** 60 to 80 sq. ft. per Bag
- **STUCCO MIX:** 70 to 125 sq. ft. per Bucket

Limitations

- **DO NOT** apply if substrate temperature is below 40°F or above 100°F, or if ambient temperature below 40°F above 100°F.
- **DO NOT** if precipitation is expected within a twenty four (24) hour period.

Not responsible for cracks and delaminations caused by structural movement, improper substrate, improper design, improper construction or improper application.

Packaging And Storage

- **STUCCO BASE:** 65-lb Bag.
- **STUCCO MIX:** 65-lb Pail.
- **COLORANT:** 4 ounce jar
- Store bags in a cool, dry location and pails at 40-90°F.
- Store away from direct contact with the ground or concrete.
- Protect from weather and other damage.
- Shelf life is approximately 18 months on unopened pails and 24 months on unopened bags.

Damage Limitation

Seller shall not be liable for any damages, injury, loss, direct or consequential, resulting from its products. The parties intend that the limitation of damages, including consequential damages, applies even if the exclusive remedy provided for herein fails of its essential purpose.

Exclusive Remedy

Seller's sole obligation, and buyer's exclusive remedy shall be to replace material if found to be defective.

Warranty Disclaimer

There are no warranties which extend beyond the description of the fact hereof. Seller expressly disclaims all other warranties regarding the use of its products, whether expressed or implied, including the implied warranties of merchantability and for fitness of a particular purpose. Since use of the product is beyond the Seller's control, the Buyer assumes all risk of use.

Warranty

Materials are guaranteed with respect to uniformity and quality within manufacturer's specifications.



West Coast

Toll Free Phone (877) 685-8426
(949) 888-7100
Fax (949) 888-2555
E-mail info@multicoat.com



East Coast

Toll Free Phone (800) 660-6729
(304) 937-2101
Fax (304) 937-2109
E-mail info@multicoat.com