



A Premier Crack Repair System for Concrete Restoration

CRACK REPAIR SYSTEM

DESCRIPTION & USE

The MULTICOAT SPEED BOND CRACK REPAIR SYSTEM is a unique two component water based polyurethane material. SPEED BOND is used to repair cracks, holes, and depressions prior to the application of various Multicoat Systems. SPEED BOND is a two-part material packaged in a standard caulking tube which does not require any special tools.

ADVANTAGES:

- Eliminates Most Surface Cracks
- Easy to Use and Install
- Sets in Minutes
- Flexible
- Excellent Bond Strength
- Self-Leveling
- Paintable — Accepts Coatings
- No Special Tools Needed
- Water-based — Green Friendly
- Drill and Tap for Bolts



ENVIRONMENTALLY SAFE, WATERBASE



FILL CRACK WITH SPEED BOND

SEE TEST DATA

SURFACE PREPARATION

Surface must be completely dry and thoroughly clean of any foreign material that may interfere with bonding. Cracks larger than 1/16" in width must be opened with a crack chaser to a minimum of 1/4" in width. Once opened, all cracks must be cleaned by sand-blasting, waterblasting or water sandblasting. Depth of crack and surface area around crack must be completely dry and thoroughly clean.

APPLICATION

Prepare Cartridge: Unscrew round collet, pull cap from center of tube and set both to the side for later use. Screw enclosed mixing tip onto tube insuring snug fit.

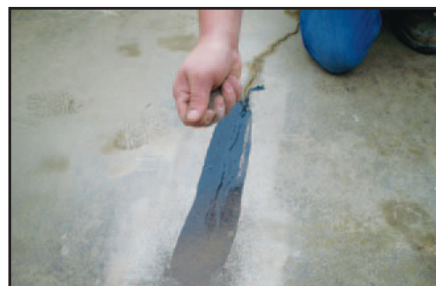
Initial Dispense: Prior to filling crack, insure material is flowing through mixing tip uniformly and easily. Dispense onto discarded cardboard as a test.

Begin filling crack to a slightly over filled capacity, then immediately press SPEED BOND into crack and spread material level and flat onto adjacent sides of crack by using a margin trowel or putty knife. While SPEED BOND is wet, broadcast #16-20 silica sand generously over the wet SPEED BOND and allow to set until dry. Once dry, brush away and sand that has not stuck to the SPEED BOND. The crack is now ready to be over-coated. Speed Bond is self leveling, and large cracks that are completely open should be dammed closed to prevent the SPEED BOND from leaking out the bottom.

Reuse: Partially used tubes can be stored and re-used. Remove the used mixing tip and discard as they can not be re-used. Attempting to re-use a used mixing tip will damage the tube and render it useless. After used tip has been removed, wipe excess material from end of cartridge, re-install the cap and collet.



PRESS INTO CRACK AND SPREAD ONTO ADJACENT SURFACE.



BROADCAST 16-20 SILICA SAND INTO WET SPEED BOND. BRUSH OFF ANY LOOSE SAND WHEN DRY.



LIMITATIONS

Do not apply if substrate temperature is below 40°F or above 100°F, or if ambient temperature below 40°F above 100°F.

Do not apply if precipitation is expected within a twenty four (24) hour period.

Speed bond will set quickly, do not interrupt work.

COVERAGE

One tube will yield approximately 18-22 linear feet (depending on width and depth of crack), applied at a rate of 3/16" wide by 3/16" deep.

PACKAGING AND STORAGE

Each sleeve contains one 8.6 ounce cartridge and one mixing tip. Store in a dry place at 60 to 85 deg F. Shelf life is approximately 16 months.

DAMAGE LIMITATION

Seller shall not be liable for any damages, injury, loss, direct or consequential, resulting from its products. The parties intend that the limitation of damages, including consequential damages, applies even if the exclusive remedy provided for herein fails of its essential purpose.

EXCLUSIVE REMEDY

Seller's sole obligation, and buyer's exclusive remedy shall be to replace material if found to be defective.

WARRANTY DISCLAIMER

There are no warranties which extend beyond the description of the fact hereof. Seller expressly disclaims all other warranties regarding the use of its products, whether expressed or implied, including the implied warranties of merchantability and for fitness of a particular purpose. Since use of the product is beyond the Seller's control, the Buyer assumes all risk of use.

WARRANTY

Materials are guaranteed with respect to uniformity and quality within manufacturer's specifications.

TEST DATA - CRACK REPAIR SYSTEM

TEST	CONDITIONS	RESULTS
1. Appearance	Mixed while Wet Grey Mixed Once Dry Grey	
2. Viscosity Part A	25°C	8200 cps
3. Viscosity Part B	25°C	6000 cps
4. Work Life	10g 1/4" Thick @ 25°C	2 minutes
5. Tack Free Time	10g 1/4" Thick @ 25°C	10 minutes
6. Full Cure Time	10g 1/4" Thick @ 25°C.....	1 hour
7. Hardness	24 hr @ 25°C.....	70
8. Temperature Range	Continues	-60°F (-51°C) to 250°F (121°C)



MULTICOAT® CORPORATION

West Coast

Toll Free: (877) 685-8426
(949) 888-7100 Fax (949) 888-2555
Website: www.multicoat.com
E-mail: info@multicoat.com

MULTICOAT® PRODUCTS, INC.

East Coast

Toll Free: (800) 660-6729
(304) 586-0616 Fax (304) 586-0620
Website: www.multicoat.com
E-mail: info@multicoat.com

AVAILABLE THROUGH

The Coating of the Future... Today

MC413
CRS