



Gridstone[®] Gypsum Ceiling Panels

National 
Gypsum[®]

Exclusive service provider
of products manufactured by
Gold Bond Building Products, LLC.

Gridstone family of products

Durability, Versatility and Aesthetic Appeal for Commercial Spaces

Gridstone® gypsum ceiling panels are a versatile and popular choice for a wide variety of commercial settings, such as hospitals, schools, data centers, and restaurants. The panels offer a finished appearance while providing easy access to essential systems like HVAC, electrical, plumbing and fire suppression. Durability, versatility and aesthetic appeal are all found in Gridstone ceiling panels.

Superior Durability: Gridstone gypsum ceiling panels are designed to withstand the rigors of a variety of commercial environments. With a noncombustible gypsum core and a sturdy vinyl laminate, these panels resist sagging and warping, ensuring a long-lasting and reliable ceiling solution. Gridstone gypsum ceiling panels are backed by a 15-year limited warranty.

Easy Installation: Gridstone panels are engineered for hassle-free installation in standard exposed grid systems. Panels score and snap clean and easily drop into a standard 15/16" exposed grid system. Whether you're outfitting a new space or renovating an existing one, Gridstone panels simplify the job.

Hygienic and Cleanable: Ideal for kitchens, food-service areas, hospitals and clean rooms, Gridstone panels feature a washable surface that maintains cleanliness and hygiene. They meet USDA requirements for food-processing facilities and are suitable for use in kitchens and food-service areas. In addition, Gridstone gypsum ceiling panels have achieved UL GREENGUARD Gold certification for low chemical emissions into indoor air during product usage.

Aesthetic Versatility: Available in both 2' x 2' and 2' x 4' sizes, Gridstone panels offer flexibility in design. In addition, Gridstone® Gypsum Ceiling Panels are available in both white and black.

The Gridstone family of products includes Gridstone® Gypsum Ceiling Panels, Gridstone® CleanRoom Ceiling Panels and Gridstone® Hi-Strength Ceiling Panels, catering to various needs and applications.

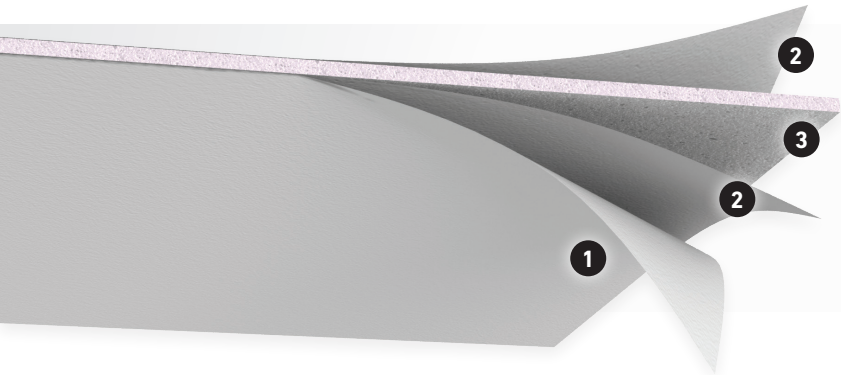
Product Selector Chart

Application	1/2" Gridstone Gypsum	1/2" Gridstone CleanRoom	5/16" Gridstone Hi-Strength
Clean Room		✓	
Commercial Kitchens	✓		✓
Exterior Soffits	✓		✓
Food Processing Facility	✓		✓
Hospital	✓		✓
Parking Garages	✓		✓
Schools	✓		✓
School Cafeteria	✓		✓
Server Room	✓	✓	✓
Retail Restaurants	✓		✓
Retail Shops	✓		✓



Gridstone® Gypsum Ceiling Panels

Ideal for Interior and Unexposed Exterior Ceiling Applications



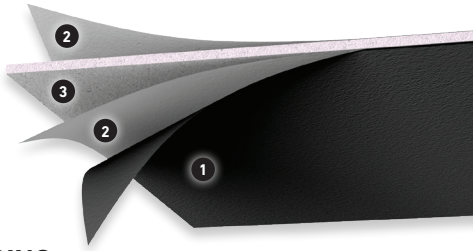
GRIDSTONE
Gypsum Ceiling Panels

Gold Bond® Gridstone® Gypsum Ceiling Panels consist of a non-combustible, gypsum core and is available in white and black laminate vinyl facers.

The 2-mil. white vinyl laminate combines high light reflectance and durability with easy cleanability. The 2-mil. black vinyl laminate facer combines durability with easy cleanability.

Use Gridstone Gypsum Ceiling Panels in interior and unexposed exterior ceiling applications that require a smooth, durable and washable surface such as soffits, parking garages, kitchens, baths, cafeterias, restaurants, hospitals, gymnasiums, recreation centers and other public buildings.

1. Vinyl Laminate
2. 100% Recycled Paper
3. Gypsum Core



APPLICATIONS

- For use in all interior and exterior ceiling applications requiring a washable surface, such as commercial kitchens, hospitals, food processing facilities, parking garages, and other commercial applications.

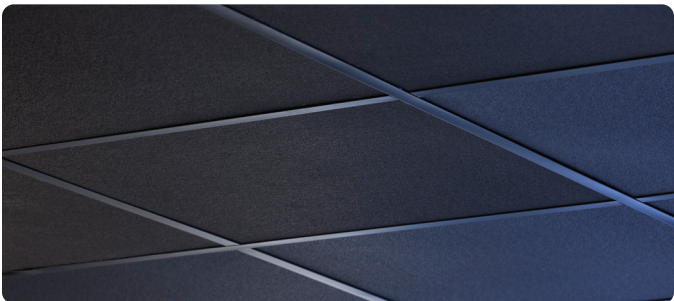
ADVANTAGES

- Gridstone Gypsum Ceiling Panels install easily in standard exposed grid systems.
- A non-combustible gypsum core assures fire safety with 1-1/2- and 2-hour fire ratings achievable depending on installation.
- The sturdy white or black vinyl laminate eliminates additional finishing.
- The rigid gypsum core prevents sagging and warping problems and is backed by a 15-year limited warranty.
- Accepted by the USDA for use in food service and food processing areas
- Achieves UL GREENGUARD Gold Certification for low chemical emissions into indoor air during product usage. For more information, visit: ul.com/gg.
- Qualifies as a low-VOC emitting material by meeting California Specification 01350. For more information, visit: calrecycle.ca.gov/greenbuilding/specs/section01350.

SIZES AND PACKAGING

Panel Size					
2' x 2'	GB5044	4 pcs./bundle	16 sq. ft.	80 bundles/unit	
2' x 4'	GB5045	4 pcs./bundle	32 sq. ft.	40 bundles/unit	
2' x 2'	GB7010	4 pcs./bundle	16 sq. ft.	80 bundles/unit	
2' x 4'	GB7020	4 pcs./bundle	32 sq. ft.	40 bundles/unit	

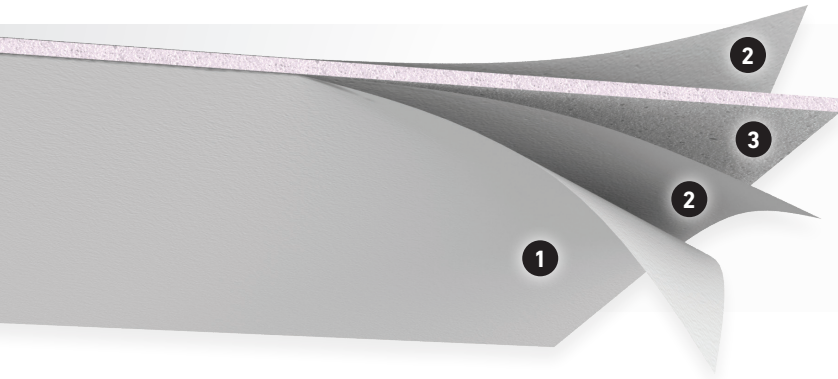
The double-banded bundles, long corner protectors and stretch wrap ensure quality on arrival.



Scan the QR code for more product information.

Gridstone® Hi-Strength Ceiling Panels

Accepted by the USDA for use in Food Service and Food Processing Areas



GRIDSTONE®
Hi-Strength Ceiling Panels

Gold Bond® Gridstone® Hi-Strength Ceiling Panels consist of a non-combustible high strength gypsum core formulated with increased uniformity and integrity which increases its sag resistance.

These panels can be used for interior and exterior ceiling applications in protected, well-ventilated spaces. Gridstone Hi-Strength Ceiling Panels are ideal for interior and unexposed exterior ceiling applications, such as soffits, parking garages and other non-fire-rated ceiling systems

Gridstone Hi-Strength Ceiling Panels are accepted by the USDA for use in food service and food processing areas.

1. Vinyl Laminate
2. 100% Recycled Paper
3. Gypsum Core

APPLICATIONS

- For use in all interior and exterior ceiling applications requiring a washable surface, such as commercial kitchens, hospitals, food processing facilities, parking garages, and other commercial applications.

ADVANTAGES

- Gridstone Hi-Strength 5/16" (7.9 mm) Ceiling Panels are 40% lighter in weight than standard gypsum ceiling panels.
- Gridstone Hi-Strength Ceiling Panels install easily in standard exposed grid systems.
- The durable white vinyl laminate eliminates additional finishing.
- Gridstone Hi-Strength Ceiling Panels' rigid gypsum core prevents sagging and warping problems and is backed by a 15-year limited warranty.
- Achieves UL GREENGUARD Gold Certification for low chemical emissions into indoor air during product usage. For more information, visit: ul.com/gg.
- Qualifies as a low-VOC emitting material by meeting California Specification 01350. For more information, visit: calrecycle.ca.gov/greenbuilding/specs/section01350.

SIZES AND PACKAGING

Panel Size				
2' x 2'	GB5020	6 pcs./bundle	24 sq. ft.	80 bundles/unit
2' x 4'	GB5010	6 pcs./bundle	48 sq. ft.	40 bundles/unit

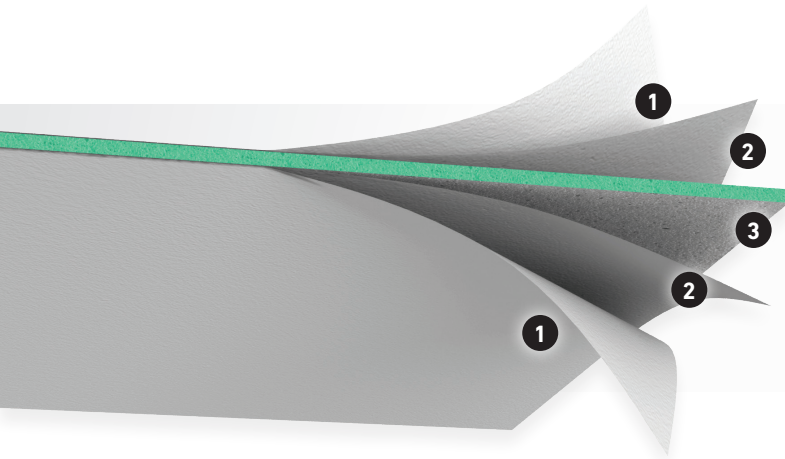
The double-banded bundles, long corner protectors and stretch wrap ensure quality on arrival.



Scan the QR code for more product information.

Gridstone® CleanRoom Ceiling Panels

Maintain Low Levels of Airborne Particulates



GRIDSTONE®
CleanRoom Ceiling Panels

Gold Bond® Gridstone® CleanRoom Ceiling Panels are prefinished ceiling panels with a non-combustible gypsum core. The 2-mil. white, stipple-textured vinyl laminate combines high light reflectance with easy cleanability. CleanRoom panels are manufactured with the exposed edges sealed, providing a durable coating that completely seals the panel.

Gridstone CleanRoom panels are for use in systems designed for areas requiring high levels of air cleanliness or low airborne particulate levels such as clean rooms and clean zones.

1. Vinyl Laminate
2. 100% Recycled Paper
3. Gypsum Core

APPLICATIONS

- For use in all interior spaces requiring low levels of airborne particulates, such as research laboratories, server rooms and pharmaceutical or other specialized manufacturing facilities.

ADVANTAGES

- Designed for CleanRoom use. Approved for use in systems Class 100,000, Class 10,000, Class 1,000, Class 100 per federal standard 209E "Airborne Particulate Cleanliness Classes in CleanRooms and Clean Zones."
- A non-combustible gypsum core assures fire safety with 1-1/2- and 2-hour fire ratings achievable depending on installation.
- Durable white vinyl laminate eliminates additional finishing.
- Gridstone CleanRoom Ceiling Panels' rigid gypsum core prevents sagging and warping problems and is backed by a 15-year limited warranty.
- Achieves UL GREENGUARD Gold Certification for low chemical emissions into indoor air during product usage. For more information, visit: ul.com/gg.
- Qualifies as a low-VOC emitting material by meeting California Specification 01350. For more information, visit: calrecycle.ca.gov/greenbuilding/specs/section01350.
- Achieves ISO 14644 rating.

SIZES AND PACKAGING

Panel Size				
2' x 2'	GB5040	4 pcs./bundle	16 sq. ft.	80 bundles/unit
2' x 4'	GB5030	4 pcs./bundle	32 sq. ft.	40 bundles/unit

The double-banded bundles, long corner protectors and stretch wrap ensure quality on arrival.



Scan the QR code for more product information.

TECHNICAL DATA

Gold Bond® Gridstone® Gypsum Ceiling Panels

Physical Properties	Gridstone White Panels	Gridstone Black Panels
Thickness ¹ , Nominal	1/2" (12.7 mm)	1/2" (12.7 mm)
Width ¹ , Nominal	2' (610 mm), (Actual size is 23-3/4")	2' (610 mm), (Actual size is 23-3/4")
Length ^{1,6} , Standard	GB 5044: 2' (610 mm), (Actual size is 23-3/4") GB 5045: 4' (1,219 mm), (Actual size is 47-3/4")	GB 7010: 2' (610 mm), (Actual size is 23-3/4") GB 7012: 4' (1,219 mm), (Actual size is 47-3/4")
Weight, Nominal	2.2 lbs./sq. ft. (10.74 k/m2)	2.2 lbs./sq. ft. (10.74 k/m2)
Edges ¹	Square	Square
Finish Face	2 mil. White Vinyl Laminate	2 mil. Black Vinyl Laminate
Finish Back	N/A	N/A
Predecorated Gypsum Board	1 Class	1 Class 1
Ceiling Attenuation Class (CAC) ^{4,5}	46 dB	46 dB
Light Reflectance ⁵	LR 1 (75% or greater)	N/A
Product Standard Compliance	ASTM C1396	ASTM C1396
Fire-Resistance Characteristics		
Core Type	Type X	Type X
UL Type Designation	FSW-G	FSW-G
Combustibility ²	Non-combustible Core	Non-combustible Core
Surface Burning Characteristics ³	Class A	Class A
Flame Spread ³	5	5
Smoke Development ³	0	0

Gold Bond® Gridstone® Hi-Strength and CleanRoom Ceiling Panels

Physical Properties	Gridstone Hi-Strength Ceiling Panels	Gridstone CleanRoom Ceiling Panels
Thickness ¹ ,	Nominal 5/16" (7.9 mm)	Nominal 1/2" (12.7 mm)
Width ¹ ,	Nominal 2' (610 mm), (Actual size is 23-3/4")	Nominal 2' (610 mm), (Actual size is 23-3/4")
Length ¹ , Standard	GB 5020: 2' (610 mm), (Actual size is 23-3/4") GB 5010: 4' (1,219 mm), (Actual size is 47-3/4")	GB 5040: 2' (610 mm), (Actual size is 23-3/4") GB 5030: 4' (1,219 mm), (Actual size is 47-3/4")
Weight, Nominal	1.24 lbs./sq. ft. (6.05 k/m2)	2.2 lbs./sq. ft. (10.74 k/m2)
Edges ¹	Square	Square
Finish Face	2 mil. White Stipple Vinyl Laminate	2 mil. White Stipple Vinyl Laminate
Finish Back	N/A	2 mil. Clear Vinyl Laminate
Predecorated Gypsum Board ¹	Class 1	Class 1
Ceiling Attenuation Class (CAC) ^{4,5}	41 dB	46 dB
Light Reflectance ⁵	LR 1 (75% or greater)	LR 1 (75% or greater)
Product Standard Compliance	ASTM C1396	ASTM C1396
Fire-Resistance Characteristics		
Core Type	N/A	Type X
UL Type Designation	N/A	FSW-G
Combustibility ²	Non-combustible Core	Non-combustible Core
Surface Burning Characteristics ¹	Class A	Class A
Flame Spread ³	5	5
Smoke Development ³	0	0

1. Specified values per ASTM C1396, tested in accordance with ASTM C473.

2. Tested in accordance with ASTM E136.

3. Tested in accordance with ASTM E84.

4. Tested in accordance with ASTM E1414.

5. Tested in accordance with ASTM C1264, Type XX, Patterns E and G.

6. Please consult your local sales representative for all non-standard lengths and widths. Minimum order requirements may apply.

INSTALLATION RECOMMENDATIONS

GENERAL

- Provide cross ventilation in unheated or enclosed space above ceiling panels.
- Install Gridstone Gypsum Ceiling Panels in lay-in suspension systems with edges concealed by flanges of suspension members.
- Gridstone Gypsum Ceiling Panels are designed to be mounted in standard 15/16" (24 mm) exposed tee grid systems or environmental-type grids for severe conditions, with grids either 24" (610 mm) x 24" (610 mm) or 24" (610 mm) x 48" (1,219 mm). Grid installation should be conducted according to manufacturer's specification.
- Vinyl laminate on face of Gridstone Gypsum Ceiling Panels is directional. Install with all factory edges parallel (same direction).
- Each panel must be continuously supported on all four edges.
- Cut panels to fit tightly at borders and penetrations so that cut edges are concealed by trim pieces and escutcheons.

CLEANING

- Remove common dirt and stains on the vinyl surface with mild soap or detergent in lukewarm water. Use a light scrubbing action with a cloth, sponge or soft brush. If the suitability of any cleaning agent is unknown, check its effect on the Gridstone Gypsum Ceiling Panel surface in a hidden area or on a scrap piece before attempting to remove a field stain.

DECORATION

Gridstone Gypsum Ceiling Panels are factory finished decorative products that do not require painting. However, if desired, paint Gridstone with the following products:

1. Oil primer with finish coat of oil or latex paint
2. Two coats of latex paint

LIMITED WARRANTY

Gold Bond Building Products, LLC ("Seller") warrants to its customers that at the time of sale its Gold Bond® Gridstone® Gypsum Ceiling Panels will be free of manufacturing defects and will not visibly sag as a result of defects in material or workmanship. Gridstone Gypsum Ceiling Panels covered by this warranty include:

- Gridstone® Gypsum Ceiling Panels
- Gridstone® CleanRoom Ceiling Panels
- Gridstone® Hi-Strength Ceiling Panels

WARRANTY DURATION

This warranty will remain in effect for fifteen (15) years from the date the product is purchased from Seller.

WARRANTY CONDITIONS

This warranty only applies if the following conditions are met:

1. The installation methods conformed to applicable written recommendations and specifications published by Seller, by the American National Standards Institute (ANSI), and by the Ceiling and Interior Systems Contractors Association in their "Ceiling Systems Handbook";
2. The product has been properly handled and stored in a clean, dry area at all times prior to and during installation, and has not been abused or damaged during handling or storage or been used for an improper application;

3. The product shall be maintained at a temperature not to exceed 104° Fahrenheit (40° Celsius) and not exceed 90% relative humidity prior to, during, and after installation;
4. The problem with the product is not due to structural movement of the building, to movement in, failure of or defects in the materials to which the product is attached or from which it is suspended, or to acts of God, such as earthquakes, storms, fires or floods; and
5. No water or water vapor comes into direct contact with the product, such as from condensation, leaking pipes, steam or similar sources.

EXCLUSIONS AND LIMITATIONS

This warranty does not cover:

1. Installation in which the plenum space above the ceiling panels is used as a conditioned air duct (supply or return) or vented to outside, moist air.
2. Damage to the product caused by improper installation or maintenance, exposure to smoke, chemical vapors, fire, or foreign or toxic substances.
3. Incidental, indirect, or consequential losses, damages, or expenses. The customer's exclusive remedy for any type of claim or action for defective products will be limited to the replacement of the product (in the form originally shipped) or, at Seller's option, to a payment or credit not greater than the original purchase price of the product. Some states or provinces do not allow the exclusion or limitation of consequential or incidental damages, so such exclusion or limitation may not apply to you.

National Gypsum Company

National Gypsum Company is the exclusive service provider of reliable, high-performance building products manufactured by its affiliate companies and marketed under the Gold Bond®, ProForm®, and PermaBASE® brands. The strategic network of Gold Bond, ProForm, and PermaBASE manufacturing facilities located throughout major metropolitan hubs in North America allows us to provide the best in customer service so we can keep your fast-paced projects moving forward.

SUSTAINABILITY

Our brands create products that contribute to sustainable design by providing healthy indoor air quality; moisture, mold and mildew management; durability; optimal acoustics; life safety and increased space functionality. No matter how you define sustainability, we offer the most comprehensive set of value-added solutions in the industry.

TRUSTED PARTNER

The National Gypsum name has been synonymous with high-quality, innovative products and exceptional customer service since 1925. Our technical experts at 1-800-NATIONAL® are always a phone call away to answer any type of product or specification question.

We are Building Products for a Better Future® - one project at a time.

Technical Information

Visit goldbondbuilding.com or call National Gypsum Company Construction Services: 1-800-NATIONAL (628-4662).

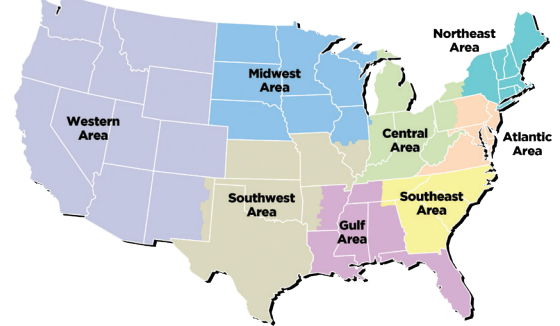
Technical Information Información Técnica

1-800-NATIONAL®
1-800-628-4662

National Gypsum Company is the exclusive service provider for products manufactured by Gold Bond Building Products, LLC. The Gold Bond Gridstone Ceiling Panels family of products is manufactured by Gold Bond Building Products, LLC.

Customer Service

- Atlantic Area**
(800) 237-9167
atlanticarecsrs@nationalgypsum.com
- Central Area**
(800) 252-1065
centralarecsrs@nationalgypsum.com
- Gulf Area**
(800) 343-4893
gulfarecsrs@nationalgypsum.com
- Midwest Area**
(800) 323-1447
midwestarecsrs@nationalgypsum.com
- Northeast Area**
(800) 253-3161
northeastarecsrs@nationalgypsum.com
- Southeast Area**
(800) 548-9394
southeastarecsrs@nationalgypsum.com
- Southwest Area**
(800) 548-9396
southwestarecsrs@nationalgypsum.com
- Western Area**
(800) 824-4227
westernarecsrs@nationalgypsum.com



National 
Gypsum®

Exclusive service provider
of products manufactured by
Gold Bond Building Products, LLC.

Gold Bond®
Building Products

Gold Bond Building Products, LLC
2001 Rexford Road
Charlotte, NC 28211
704.365.7300
goldbondbuilding.com