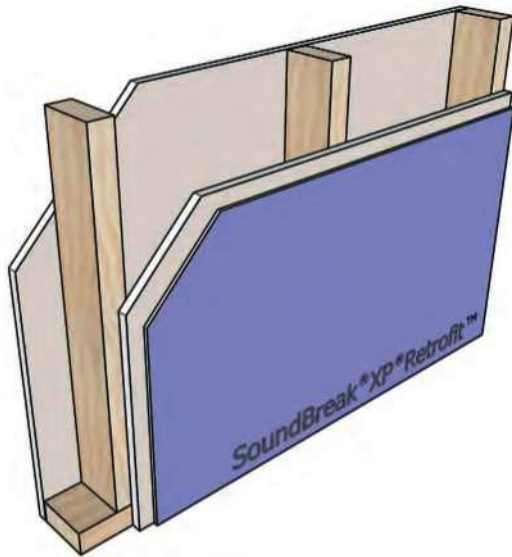


SoundBreak XP Retrofit Partitions

Figure 267

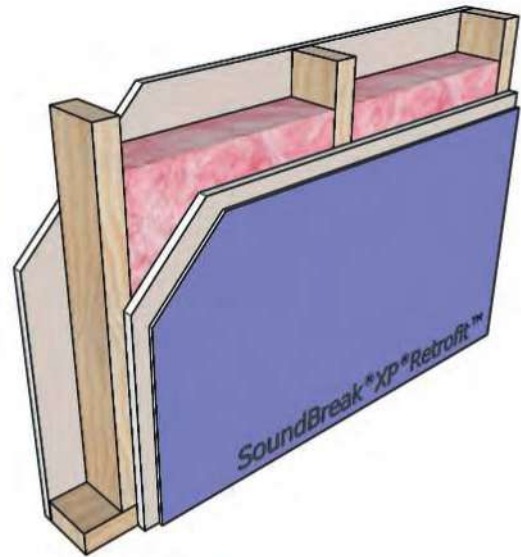


STC-36

NGC 2012049

Framing: 2x4 wood studs, 16" o.c.
 Insulation: None
 Side 1: 1/2" Gold Bond Gypsum Board
 Side 2: 5/16" Gold Bond SoundBreak XP Retrofit on
 1/2" Gold Bond Gypsum Board
 UL Design: Not Rated

Figure 268

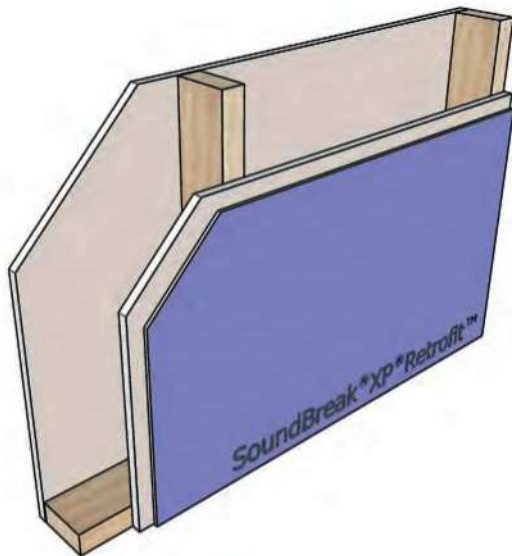


STC-40

NGC 2012050

Framing: 2x4 wood studs, 16" o.c.
 Insulation: 3-1/2" glass fiber
 Side 1: 1/2" Gold Bond Gypsum Board
 Side 2: 5/16" Gold Bond SoundBreak XP Retrofit on
 1/2" Gold Bond Gypsum Board
 UL Design: Not Rated

Figure 269

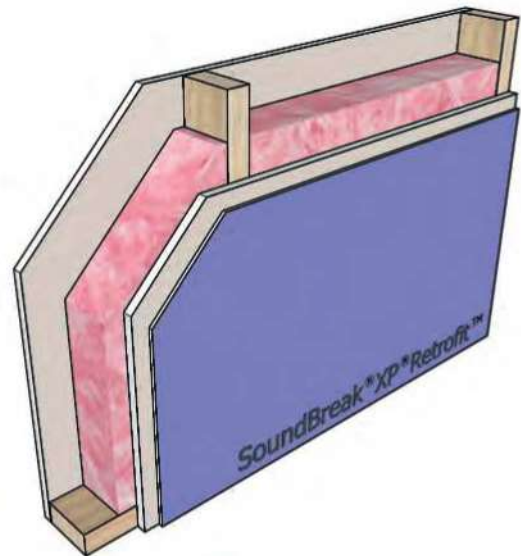


STC-39

NGC 2012067

Framing: 2x4 wood studs, 24" o.c.
 Insulation: None
 Side 1: 1/2" Gold Bond Gypsum Board
 Side 2: 5/16" Gold Bond SoundBreak XP Retrofit on
 1/2" Gold Bond Gypsum Board
 UL Design: Not Rated

Figure 270



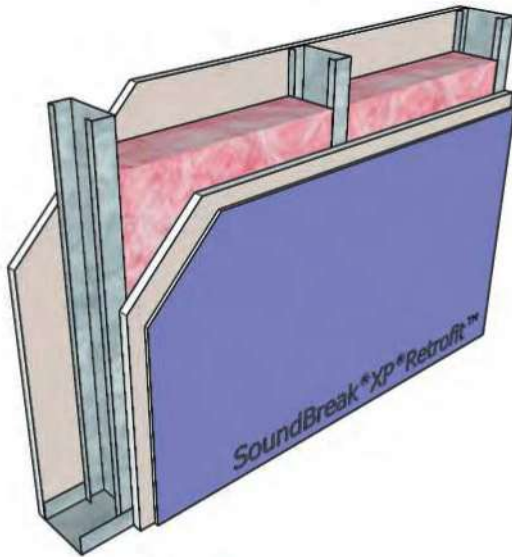
STC-45

NGC 2012066

Framing: 2x4 wood studs, 24" o.c.
 Insulation: 3-1/2" glass fiber
 Side 1: 1/2" Gold Bond Gypsum Board
 Side 2: 5/16" Gold Bond SoundBreak XP Retrofit on
 1/2" Gold Bond Gypsum Board
 UL Design: Not Rated

SoundBreak XP Retrofit Partitions

Figure 271



STC-52

NGC 2013031

Framing: 3-5/8" steel studs, 25 gauge (18 mil), 16" o.c.

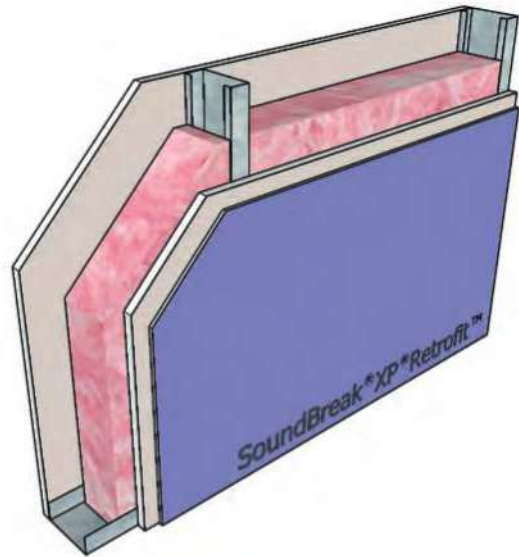
Insulation: 3-1/2" glass fiber

Side 1: 5/8" Fire-Shield Gypsum Board

Side 2: 5/16" Gold Bond SoundBreak XP Retrofit on
5/8" Fire-Shield Gypsum Board

UL Design: V438, U465

Figure 272



STC-53

NGC 2013041

Framing: 3-5/8" steel studs, 25 gauge (18 mil), 24" o.c.

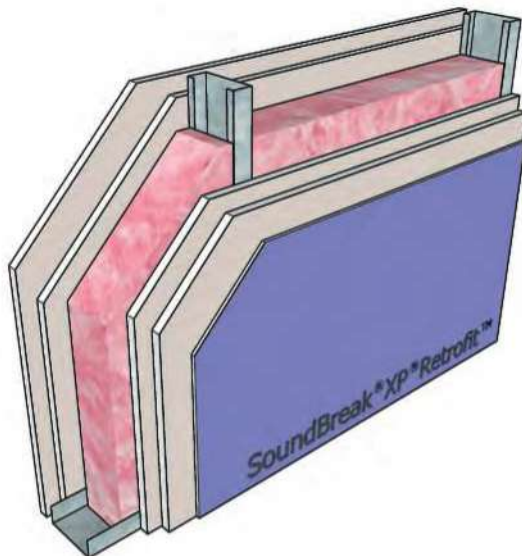
Insulation: 3-1/2" glass fiber

Side 1: 5/8" Fire-Shield Gypsum Board

Side 2: 5/16" Gold Bond SoundBreak XP Retrofit on
5/8" Fire-Shield Gypsum Board

UL Design: V438, U465

Figure 273



STC-58

NGC 2016026

Framing: 3-5/8" steel studs, 25 gauge (18 mil), 24" o.c.

Insulation: 3-1/2" glass fiber

Side 1: 2 layers 5/8" Fire-Shield Gypsum Board

Side 2: 5/16" Gold Bond SoundBreak XP Retrofit on
2 layers 5/8" Fire-Shield Gypsum Board

UL Design: V438, U411 - 2 hour