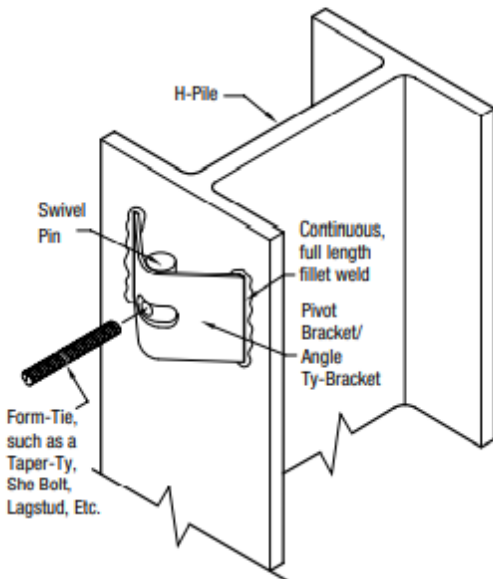
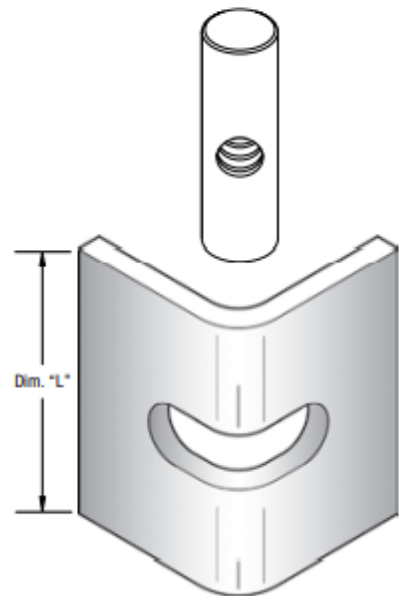
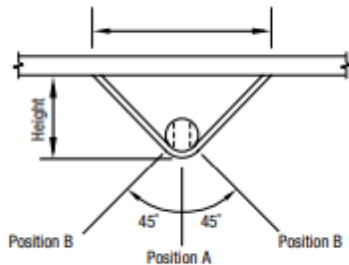
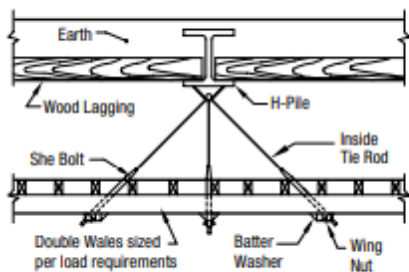


Angle Ty-Bracket

The AR Angle Ty-Bracket is designed to tie single-sided forming to steel piles, metal beams, etc. Brackets are available from 13 mm to 25 mm (½" to 1") diameters as identified in the table below, with lag thread or can be special ordered with NC thread.

The AR Angle Ty-Bracket allows a full 90° of pivot of the form-tie and will exceed the tensile capacity of the form-tie when correctly installed by a certified licensed welder.



APPROXIMATE SAFE WORKING LOAD

2:1 Safety Factor

To order, please specify the following information

EXAMPLE

Name Single End Welding Tyscru
Form-Ty Diameter 25 mm (1")
Quantity 100

Note: Performance could vary based on the quality of weld.

Warning: To ensure proper engagement (final installation) the Form-tie must extend beyond the swivel pin a minimum of 13 mm (½"). An easy way to accomplish this is to line up the swivel pin and the Formtie in position A and thread the Form-tie through the swivel pin until it contacts the metal piling.

APPROXIMATE SAFE WORKING LOADS

Form Tie Diameter mm (in)	Dim. "L"	Bracket SWL kN (lbs.)	
		Position A	Position B
13 mm (½")	115 mm (4½")	40 kN (9,000 lbs)	28 kN (6,300 lbs)
20 mm (¾")	115 mm (4½")	80 kN (18,000 lbs)	56 kN (12,500 lbs)
25 mm (1")	152 mm (6")	140 kN (31,500 lbs)	98 kN (22,000 lbs)

Contact AR for non-standard sizes or thread configurations.