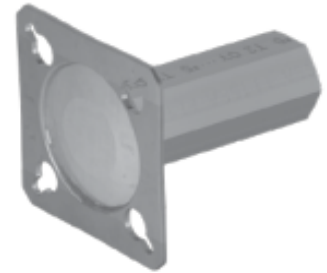


# Formsavers™

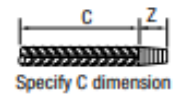
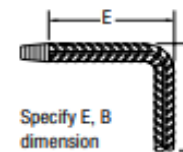
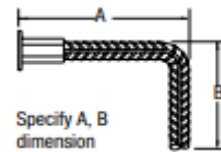
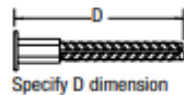
AR Formsaver™ dowel bar assemblies provide continuity and structural integrity to reinforced concrete construction in segmental pour applications. The AR Formsaver™ is designed with our unique tapered thread system, factory installed thread protectors, and durable mounting plates for easy attachment to forms. The taper threaded design, like the complete family of couplers, provides load path continuity in tension, compression and stress reversal applications. AR Formsaver™ mechanical splices provide superior performance well beyond the yield strength of the reinforcing bar.



REBAR DESIGNATION				Taper Threaded Rebar (Male) <sup>1</sup>		Coupler/Rebar Assembly (Female) <sup>2</sup>	
ASTM in-lbs	mm	Type	Soft Metric	Part Number	Length "C" mm (in)	Part Number	Length "D" mm (in)
4	12 m	10 M	13 mm	FS4M24	610 mm (24")	FS4F20	508 mm (20")
				FS4M36	914 mm (36")	FS4F24	610 mm (24")
5	16 mm	15 M	16 mm	FS5M24	610 mm (24")	FS5F24	610 mm (24")
				FS5M30	762 mm (30")	FS5F30	762 mm (30")
				FS5M36	914 mm (36")	FS5F36	914 mm (36")
6	20 mm	20 M	19 mm	FS6M36	914 mm (36")	FS6F24	610 mm (24")
						FS6F36	914 mm (36")
7	22 mm	—	22 mm	FS7M36	914 mm (36")	FS7F36	914 mm (36")
				FS7M48	1219 mm (48")		
8	25 mm	25 M	25 mm	FS8M48	1219 mm (48")	FS8F52	1321 mm (52")
9	28 mm	30 M	29 mm	FS9M48	1219 mm (48")	FS9F52	1321 mm (52")
10	32 m	-	32 mm	FS10M60	1524 mm (60")	FS10F64	1626 mm (64")
11	36 mm	35 M	36 mm	FS11M60	1524 mm (60")	FS11F64	1626 mm (64")

<sup>1</sup> Includes Rebar Thread Protector

<sup>2</sup> Includes Coupler Thread Protector



## How to Order by Part Number

FS	SIZE	STYLE	LENGTH	X	LENGTH	E
Attached nailer plate form saver	Rebar size	F indicates coupler/rebar, M indicates threaded rebar (other styles on request)	In mm (inches) of "A", "C" or "D"	Indicates bent rebar (optional)	In mm (inches) of "B" (optional)	Epoxy (optional)

Non standard custom sizes  
and lengths available.

