

No Washer Snap-Ty (NW)

The AR No Washer Snap-Ty and Heavy Duty No Washer Snap-Ty have hex headed ends. These Snap-Tys are equipped with a 13 mm (1/2") break back and are manufactured for specified wall thicknesses. Available in stainless steel. Also available in water seal.

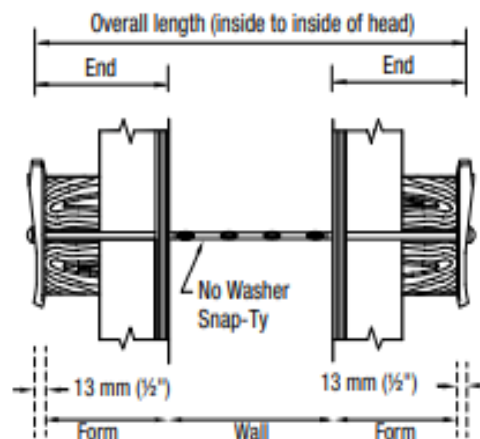
To order, please specify the following information

EXAMPLE

Name No Washer Snap-Ty (NW)
Type Standard 2.25M
End 210mm (8 1/4")
Wall 200mm (8")
End 210mm (8 1/4")
Break back 13mm (1/2")
Strength 10.0 kN (2,250 lbs)
Quantity (lots of 100) 200

STANDARD 2.25M
APPROXIMATE SAFE
WORKING LOAD
10kN (2,250 LBS)
2:1 Safety Factor

HEAVY DUTY 3M
APPROXIMATE SAFE
WORKING LOAD
13.5 kN (3,000 LBS)
2:1 Safety Factor



NOTE: For Ty removal and break back guidelines please see page 101 of the Appendix.

