

## No Washer Snap-Ty (NW)

The AR No Washer Snap-Ty and Heavy Duty No Washer Snap-Ty have hex headed ends. These Snap-Tys are equipped with a 13 mm (1/2") break back and are manufactured for specified wall thicknesses. Available in stainless steel. Also available in water seal.

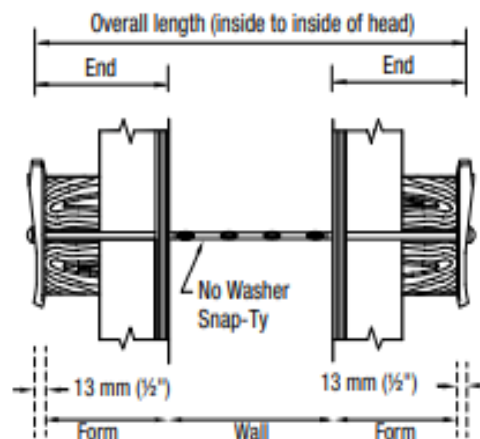
To order, please specify the following information

**EXAMPLE**

Name ..... No Washer Snap-Ty (NW)  
Type ..... Standard 2.25M  
End ..... 210mm (8 1/4")  
Wall ..... 200mm (8")  
End ..... 210mm (8 1/4")  
Break back ..... 13mm (1/2")  
Strength ..... 10.0 kN (2,250 lbs)  
Quantity (lots of 100) ..... 200

**STANDARD 2.25M**  
**APPROXIMATE SAFE**  
**WORKING LOAD**  
**10kN (2,250 LBS)**  
**2:1 Safety Factor**

**HEAVY DUTY 3M**  
**APPROXIMATE SAFE**  
**WORKING LOAD**  
**13.5 kN (3,000 LBS)**  
**2:1 Safety Factor**



NOTE: For Ty removal and break back guidelines please see page 101 of the Appendix.

