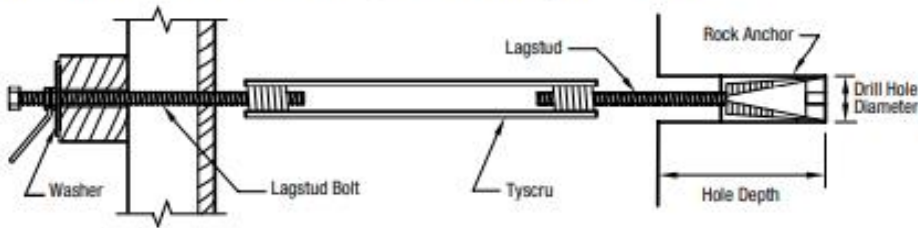


## Rock Anchor

AR Rock Anchors are used for anchoring with AR Lagstud or NC Rod in form tying and anchoring of concrete facings to rock excavation. Available in 13 mm, 20 mm and 25 mm (½", ¾" and 1") diameters.



### APPROXIMATE SAFE WORKING LOADS 2:1

Diameter mm (in)	Drill Hole Diameter mm (in)	Hole Depth (minimum) mm (in)	Safe Working Load*	
			kN	(lbs)
13 mm (½")	35 mm (1½")	150 mm (6")	20 kN	(4,500 lbs)
20 mm (¾")	45 mm (1¾")	200 mm (8")	40 kN	(9,000 lbs)
25 mm (1")	45 mm (1¾")	250 mm (10")	80 kN	(18,000 lbs)

\*AR recommends that all Rock Anchors be tested under job-site conditions to determine if ambient stratum conditions will limit approximate safe working load.

## AR Rock Anchor Assembly

Transition couplers give the AR mechanical cone shell anchors the ability to be used with lagstud or National Course thread, for single sided forming applications.

Refer to AR's Rock Anchoring and Bolt System catalogue for technical information or consult the AR Technical Department.



Consult the AR Technical Department for other thread patterns, other drill hole diameters and higher Approximate Safe Working Load requirements.

NOTE: Remove temporary plastic band before installation. The lagstud end must be against back-strap then forced to bottom of bore hole before tightening. Do not overtighten. Overtightening destroys the bond.

