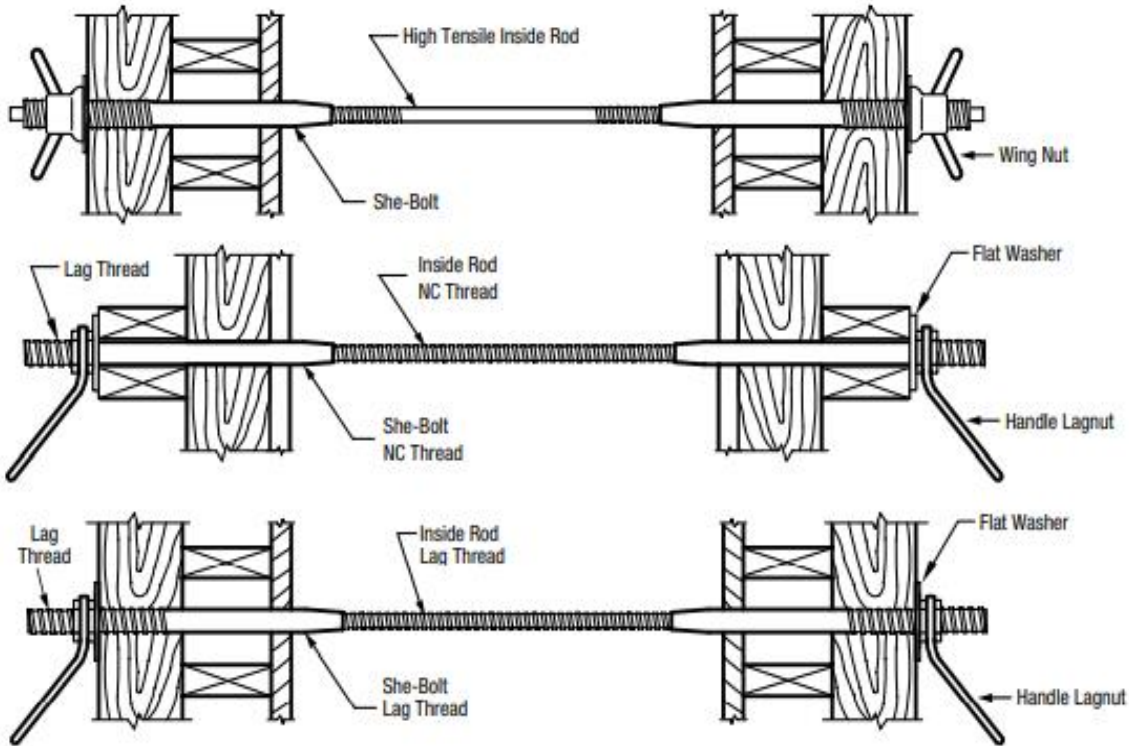


She-Bolt



Nominal She-Bolt Diameter mm (in)	Internal Thread Diameter					
	13 mm (½")		20 mm (¾")		25 mm (1")	
	kN	lbs	kN	lbs	kN	lbs
25 mm (1")	40	9,000	80*	18,000	-	-
29 mm (1 ¼")	40	9,000	80*	18,000	-	-
32 mm (1 ¼")	40	9,000	80	18,000	-	-
38 mm (1 ½")	40	9,000	80	18,000	165*	37,500

APPROXIMATE SAFE WORKING LOAD 2:1 Safety Factor

*Maximum She-Bolt Approximate Safe Working Load capacity at minimum 2:1 Safety Factor which is highly recommended for reusable working parts.

NOTE: 50 mm (2") available as a special order. Consult your AR Sales Representative or AR Technical Department for more information.