

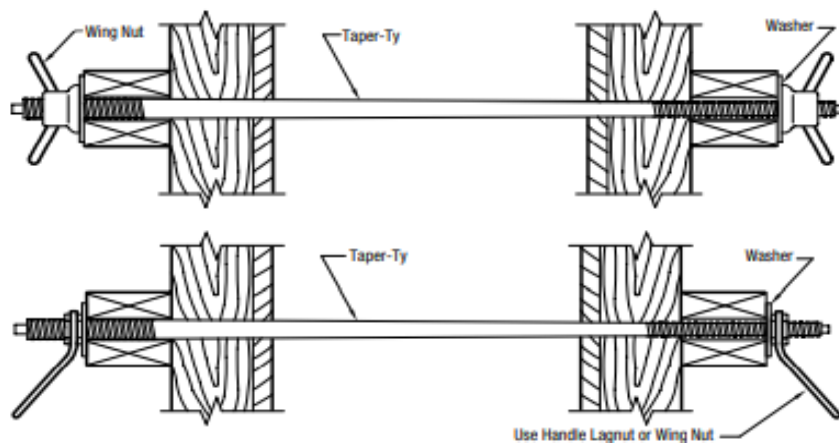
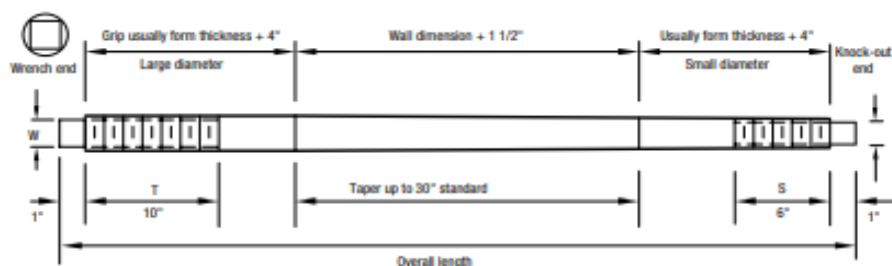
Taper-Ty System

The AR Taper-Ty System is used where specifications permit the complete removal of the form-tie from the concrete wall. Taper-Tys are available with lag thread and a variety of hardware. While the system is available in the standard diameters shown, variations of these sizes are available on special order. The complete system consists of one Taper Ty, with 2 square or flat washers and 2 nuts, either lag Hex Nuts, special Handle Lagnuts or Malleable Wing Nuts. The standard units are furnished with up to 750 mm of taper. Other taper lengths are available on special order. The larger diameter end has a square wrench end. The smaller diameter end has been designed with a special end for removal without damaging the thread. Other specifications are shown on the detail drawing.

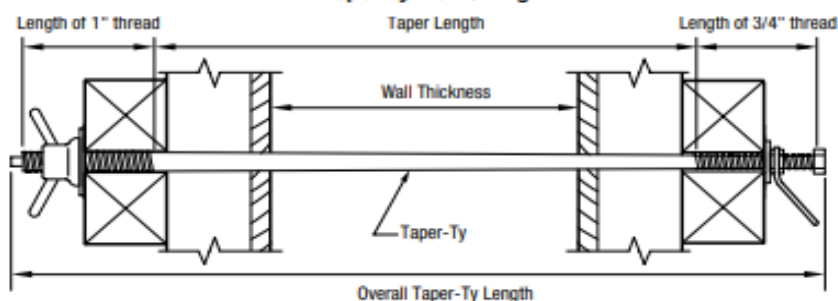
Not recommended where watertight walls are essential such as exterior walls, water reservoirs, treatment plants, etc. Use Waterseal Tyscrus instead.

Diameter (large to small)	Safe Working Loads 2:1 Safety Factor
20 mm to 13 mm (¾" to ½")	40 kN (9,000 lbs.)
20 mm to 23 mm (¾" to ⅞")	89 kN (20,000 lbs.)
25 mm to 20 mm (1" to ¾")	84 kN (19,000 lbs.)
32 mm to 25 mm (1¼" to 1")	155 kN (35,000 lbs.)
38 mm to 32 mm (1½" to 1¼")	253 kN (57,000 lbs.)

Chart based on standard 825 MPa (120,000 psi) material.
Special order materials available on request.



Taper Ty Wall Sizing



APPROXIMATE SAFE WORKING LOADS 2:1

To order, please specify the following information

EXAMPLE

Name Taper-Ty

Nominal Size

Calculate Length (29½")

Thread Length

Large diameter end 250 mm (15")

Small diameter end 150 mm (6")

Diameter 20 mm to 13 mm (¾" to ½")

Quantity 200

Taper Ty Wall Sizing

Overall length mm (in)	Length of Thread		Taper Length mm (in)	Range of Wall Thickness* mm (in)
	25 mm (1")	20 mm (¾")		
953 mm (37½")	250 mm (10")	150 mm (6")	540 mm (21½")	100 mm - 405 mm (4" - 16")
1,067 mm (42")	250 mm (10")	250 mm (10")	560 mm (22")	150 mm - 535 mm (6" - 21")
1,219 mm (48")	250 mm (10")	250 mm (10")	710 mm (28")	300 mm - 660 mm (12" - 26")

*Based on standard forming materials (typical 4x4 studs, walers, ¾" form ply, plate washer and nut assembly).

Refer to the Appendix for General Guidelines on page 96, Lateral Pressure Information on page 102 and typical Medium and Heavy Formwork beginning on page 108. See page 51 for Approximate Safe Working Load System Chart.