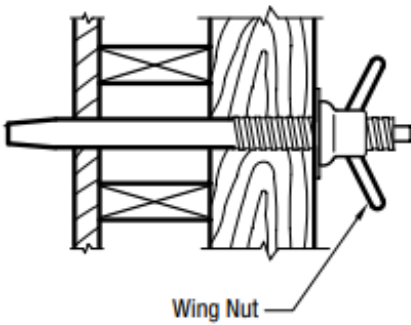
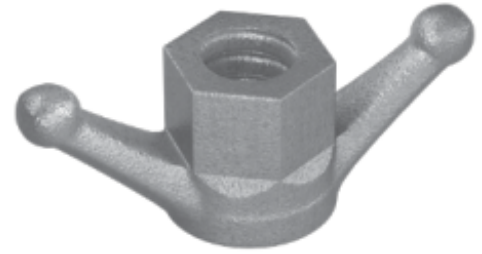


Wing Nut

AR Wing Nuts are manufactured with a lag thread and are used with AR She-Bolts or Taper-Tys. Fabricated in 20 mm, 25 mm and 32 mm ($\frac{3}{4}$ ", 1" and 1 $\frac{1}{4}$ "") diameters.



Size		Ultimate Tensile Load	
in	(mm)	lbs	(kN)
$\frac{3}{4}$	(20)	40,000	(178)
1	(25)	82,000	(365)
1 $\frac{1}{4}$	(32)	115,000	(512)

To order, please specify
the following information

EXAMPLE

Name Wing Nut

Quantity 25 mm (1")