



CONCRETE FORMWORK SUPPLEMENTAL PRODUCTS

POPULAR SAFETY SUPPLIES, FASTENING, ANCHORING & MORE



WHITE CAP[®]

FALL PROTECTION

UNIVERSAL CLASS A HARNESS

- Tongue and buckle grommet legs
- 5 points of adjustment
- Velcro name tag cover
- Other sizes available

1179718 [NPH-29]

GUARDIAN



SERAPH CONSTRUCTION HARNESS

- 6 points of adjustment
- 'Quick-adjust' torso buckles, hammer loops
- Web keepers
- Medium/Large

1181831 [11173CSA]

GUARDIAN

PROTECTA® VEST-STYLE HARNESS

- Fixed D-ring reduces need for the readjustment throughout workday
- Protected labels for long-term identification and inspection
- Auto-resetting lanyard keepers

1178295 [1161571C]

3M | **PROTECTA**
Fall Protection



CONSTRUCTION STYLE HARNESS

- Moisture-wicking, breathable back padding with soft edging
- EZ-Link™ Web Adapter enables fast and easy attachment of personal SRLs
- 420 lbs capacity

1178285 [1161205C]

3M | **PROTECTA**
Fall Protection



22" CHAIN REBAR ASSEMBLY W/SNAP & REBAR HOOKS

- 3/4" double locking snap hooks at each end
- 2.5" Swivel Rebar Hook floating in the center of the lanyard
- For work positioning applications
- Must be used with backup fall arrest system

55540471 [NRA-01-03-CS]

GUARDIAN



500' RESCUE & DESCENT KIT

- Emergency rescue and evacuation from a wide variety of elevated work areas
- Fully automatic controlled descent

55541162 [3327500]

3M | **SALA**
Fall Protection

8' NANO-LOK EDGE SELF-RETRACTING LIFELINE CABLE

- Leading edge SRLs for Tie off below dorsal D-Ring
- 8' lifeline with 3/16" galvanized steel cable
- Quick activating speed-sensing brake system

1. SINGLE LEG SNAP HOOK - 1178345 [3500217]
2. DOUBLE LEG REBAR HOOK - 1178348 [3500234]
3. DOUBLE LEG SNAP HOOK - 55540695 [3500233]

3M | **SALA**
Fall Protection



DID YOU KNOW?

Leading Edge SRLs are specifically designed to avoid being cut by edges and are required to be used when tying off to an anchor point lower than the user's back D-ring on their harness or when the lifeline may come into contact with an edge.



20' LEADING EDGE SMART LOCK SELF-RETRACTING LIFELINE

- The new Smart Lock SRL locked up 29% less when tested against 422 work motion profiles
- Leading Edge SRL for anchoring below the harness D ring or when the lifeline may contact an edge

1178353 [3503802]

3M | **SALA**
Fall Protection

VERTICAL LIFELINE ASSEMBLY W/ SNAP HOOK

- High strength co-polymer rope, 3 strand
- Compliant with CSA & OSHA
- 5/8" diameter

50FT - 1178750 [62145-01-50]
100FT - 1178749 [62145-01-100]



ALSO AVAILABLE IN
25' REBAR HOOK
55540784 [62145-N314-25]

DID YOU KNOW?

As of June 1, 2019, all newly purchased rope grabs must have a maximum 30 inch integral lanyard?

ADP ROPE GRAB 5/8" W/2' S/A LANYARD

- Removable rope grabs which are easy to install
- Triple-locking closing mechanism that fits 5/8" safety ropes
- Large ring for direct web or snap hook attachment

1178751 [WD-GR85-52S]



ROPE NOT INCLUDED



6' SHOCK ABSORBING LANYARD DOUBLE LEG, W/ REBAR HOOK

- Ideal for fall arrest and restraint applications
- Weight Capacity: CSA 130 - 310 LBS
- External shock pack

1186297 [46141]



6' ADJUSTABLE WEB LANYARD W/ SNAP HOOKS

- 9800 lbs MBS polyester webbing
- 3/4" double locking snap hooks

1181834 [NL01PW01-6A]



ADJUSTABLE S/A E4 WEB LANYARD 6' SNAP HOOKS

- Comes with an integrated shock absorbing component
- Worker Capacity Range: 130-310 lbs

1181835 [NL01PW01-6AS]



6' CABLE ANCHOR W/ THIMBLED ENDS

- Clear PVC coated cable for easy inspection
- 5,000 lb. fall arrest capacity for one user
- Meets the CSA Z259.15-12

55540452 [NC-060]



3/4" ANCHOR W/D-RING

- Lightweight design is easy to insert and remove
- Drill hole of 3/4 inch with 3-1/2 inch minimum depth
- Minimum Breaking Strength: 5,000 pounds

1185672 [A513000XRCA]



ANCHOR THREAD®

safety built in

Anchor Thread is the revolutionary, award-winning recessed cast-in-place concrete anchoring system that provides unparalleled strength, safety, versatility, and reliability.

- SAFER
- STRONGER
- CLEANER
- FASTER



ANCHOR THREAD® ADVANTAGES

- Ready for use immediately upon formwork removal
- Pour in place anchor virtually eliminates ground silica dust, no drilling required
- Use for fall protection, wire guardrail, debris netting, MEPS, etc. with various threaded attachments
- Easily Patchable
- Engineer stamped 5,000 lbs (2,268kg) maximum workload

ANCHOR THREAD ORANGE

1187474

- Comes with standard eye nut* suitable for debris netting
- Attaches to formwork before concrete pour
- Create permanent, reusable anchors for debris netting, horizontal lifelines, and fall protection

*Standard eye nut not suitable for fall protection



HAND PROTECTION

DIPPED GLOVES

Dipped gloves are great because of their tactile sensitivity. The shell of the glove is typically a knitted material such as nylon that fits close to the hand for maximum flexibility and then dipped in a coating. The coating is dependent on the application.

- Excellent
- Very Good
- Good
- Fair



FLAT NITRILE

High Chemical & Abrasion Resistance
Smooth, Non-Porous Coating

Dexterity: Tactility ■ Comfort ■

Grip: Dry ■ Wet ■ Oil ■

Abrasion: ■

Permeability: Low



FOAM NITRILE

Improves Non-Slip Grip, Draws Liquid Away From Surface

Dexterity: Tactility ■ Comfort ■

Grip: Dry ■ Wet ■ Oil ■

Abrasion: ■

Permeability: High



MICROFOAM NITRILE

Displace oils and liquids on smooth surfaces, creates suction increases grip

Dexterity: Tactility ■ Comfort ■

Grip: Dry ■ Wet ■ Oil ■

Abrasion: ■

Permeability: Low



POLYURETHANE (PU)

Strong, Lightweight & Breathable, High Resistance to Heat

Dexterity: Tactility ■ Comfort ■

Grip: Dry ■ Wet ■ Oil ■

Abrasion: ■

Permeability: High

GREASE MONKEY GLOVES 5MIL BLACK NITRILE

- Powder-free
- 5 mil thickness. 9.5" rolled cuff
- CFIA approved

M - 1178156 [5554PF-M]
L - 1178158 [5554PF-L]
XL - 1178159 [5554PF-XL]



100 PACK

SCAPE GOAT DRIVER GLOVE

- Full-grain goatskin leather
- Drivers style with keystone thumb
- Slip-on style cuff

1178169 [546-M]
1178168 [546-L]
1178170 [546-XL]



LEATHER FITTER GLOVE

- Weltd seams on middle fingers
- Leather knuckle strap
- Split grain cow leather palm and fingertips

1181480



12 PACK



STEALTH LIGHT ARTILLERY GLOVE

- Nitrile coating with a textured grip
- Hi-Vis safety polyester seamless knit shell
- Snug-fitting knit wrist

L - 1178146 [396X6-L]
XL - 1178147 [396X6-XL]



6 PACK



CHEMICAL GLOVE 14" PVC LINED

- 14" Double coated PVC chemical glove, 15 mil
- Rough finish for grip
- Resistant to abrasion, oil, and certain chemicals

1181484 [GLV4002LPR]



G-TEK POLYKOR™ A2 CUT GLOVES

- Yields great grip in dry and slightly oily conditions
- Excellent dexterity, tactile sensitivity and cut resistance

M - 1178129 [16-150/M]
LG - 1178128 [16-150/L]
XL - 1178130 [16-150/XL]



WINTER GLOVE 3/4 DIP NITRILE

- Rough ¾ nitrile crack resistant coating
- 18 gauge shell with excellent dexterity

M - 1188466
L - 1188467
XL - 1188468



DID YOU KNOW?

Prolonged vibrations from chipping and cutting can cause nerve damage called Hand-Arm Vibration Syndrome or White Finger?

VIBRASTOP GOATSKIN PALM GLOVE

- 60-gram layer of vibration dampening polymer at palms and fingers
- Protects from repetitive impact and work with pneumatic vibrating tools

55536393 [VIBGV-M]
55536392 [VIBGV-L]
55536394 [VIBGV-XL]



TENACTIV™ FOAM NITRILE GLOVE

- Made with high-strength TenActiv™ yarn for ANSI Level A4 cut protection
- Foam nitrile palm coating increases grip in wet and oily conditions

M - 55537221 [S18TAGGFN-8]
L - 55537222 [S18TAGGFN-9]
XL - 55537217 [S18TAGGFN-10]



MACH5 GLOVE A4 PVC LINED

- Nylon/glass/acrylic shell with 7gg brushed seamless knit Terry liner
- 3/4 dipped PVC coating

M - 55537372 [9390-M]
L - 55537371 [9390-L]
XL - 55537373 [9390-XL]



PERSONAL PROTECTION

6000 SERIES REUSABLE RESPIRATOR

- Use with select 3M™ filters and cartridges
- Reliable, convenient protection

S - 1178090 [6100]
M - 0100821 [6200]
L - 0100880 [6300]



P100 PARTICULATE FILTER

- NIOSH approved for environments containing certain oil and non-oil-based particles
- Advanced Electret Media (AEM) provides lightweight, easy breathing comfort

0100907 [2091]
0100908 [2097]



6500 SERIES HALF FACEPIECE RESPIRATOR

- Premium soft silicone nose cup provides exceptional comfort
- Quick latch allows for quick, temporary doffing

S - 1178091 [6501QL]
M - 0100903 [6502QL]
L - 0100904 [6503QL]



ORGANIC VAPOUR CARTRIDGE/P100 FILTER

- Swept-back design for enhanced field of view and balance
- Uses carbon particles to adsorb contaminants, filtering the air that you breathe

1178103 [60921]



DID YOU KNOW?

Cutting, drilling, and grinding of concrete produces silica dust that can lead to an irreversible lung disease called **Silicosis** and other serious diseases like cancer. Wearing a properly fitted respirator with appropriate particulate filters can help against this hazard. We can help by providing respiratory fit testing services to ensure a proper fit.

AURA N95 RESPIRATOR HEAT & HUMID VALVE

- Niosh Approved N95 Particulate Respirator
- Embossed top panel designed to help reduce eyewear fogging
- Comfortable braided headbands help keep respirator securely in place and minimizes pulling of hair

1180966 [9211+]



10 PACK



N95 PARTICULATE RESPIRATOR

- At least 95 percent filtration efficiency against certain non-oil based particles
- Two-strap design with welded dual point attachment provides a secure seal

0100615 [8210]



20 PACK



OVER-THE-HEAD EARMUFFS

- Electrically insulated (dielectric) headband
- 27 dB NRR, CSA class AL
- Low profile design improves compatibility with other PPE

1178083 [X4A]



CAPMOUNT EARMUFFS

- Lower-profile for compatibility with other personal protective equipment
- 25 dB NRR, CSA Class A
- Electrically insulated (dielectric)

1178086 [X4P5E]



UNCORDED EAR PLUGS

- Hypo allergenic foam helps create a custom seal in the ear canal
- NRR 29 dB CSA Class AL

1178065 [1100]



200 PACK

CONCRETE FORMWORK SUPPLEMENTAL PRODUCTS

OVER-THE-GLASSES ANTI-FOG EYEWEAR

- Temples extend from browbar to avoid interference w/ prescription frame temples
- Fit over prescription frames
- Dielectric, contains no metal
- H2X anti-fog



CLEAR - 1179157 [S9910ST]
GREY - 55535811 [S9920ST]



PROXIMITY EYEWEAR

- Foam sealed eyewear keep particles out and helps resist fogging
- Scratch resistant polycarbonate lens provides 99% UVA/B/C protection
- Premium H2MAX anti-fog coating



CLEAR - 1184100 [SB9310STM]
GREY - 55535830 [SB9323STM]



GOLIATH EYEWEAR

- Meets CAN/CSA Z94.3-07 standards
- Mirror tint reflects sunlight and glare reducing eye strain
- Safety glasses with the look of sunglasses



ORANGE - 0290322 [SB5645D]
BLACK - 1177003 [SB5620D]



VIRTUA PROTECTIVE EYEWEAR

- Anti-fog polycarbonate lens absorbs 99.9% of UV rays
- CSA Z94.3-07 & impact rated ANSI Z871-2010



CLEAR - 1176999 [11872-00000-20]
GREY - 1177000 [11873-00000-20]



ATOKA PROTECTIVE EYEWEAR

- Soft non-slip rubber temple tips provide non-binding fit
- Economical wrap-around single lens provides full panoramic view
- Lenses are coated for superior scratch resistance, provides 99.9% protection from harmful UV rays



CLEAR - 1177001 [S9110S]
GREY - 1177002 [S9120S]
I/O - 1178058 [S9180S]

WHISTLER HARD HAT

- Comfortable "Sure-Lock" Ratchet 4 point suspension
- CSA type 1 for vertical impact protection

WHITE - 1177971 [HP241R01]
YELLOW - 1177982 [HP241R02]



MONT-BLANC HARD HAT

- Comfortable "Sure-Lock" ratchet 4 point suspension
- CSA Type 2 for vertical and lateral impact protection
- Custom logo printing available at additional cost



1178115 [HP542R01]



POLYCARBONATE FACESHIELD CLEAR VISOR

- Multi-fit attachment pattern (or universal fit)
- Slots strategically located to fit a wide variety of headgear and brackets



8 X 15.5 X .040"

1178326 [EP815P/40]



FACESHIELD BRACKET

- High-performance faceshield bracket features a cam lock system
- Heat-resistant bracket is made from aluminum

1178325 [EPB201]



JOBSITE SAFETY



14 X 21"

IMPACTO MAT KNEELING PAD

- Designed for severe kneeling conditions such as steel, concrete, gravel, grating, wet surfaces, dirt and mud
- Will not compression set or absorb liquids

1178510 [MAT5050]



PROFLEX LIGHTWEIGHT GEL KNEE PAD

- Short cap design for mobility when kneeling
- Non-slip rubber cap grips kneeling surface
- Lightweight gel + EVA foam for mobile comfort

1178520 [18457]



DISPOSABLE COVERALL

- Barrier protection against solid particles, dust and liquid splashes
- Elastic waist for improved comfort

L - 55538084
XL - 55538085
2XL - 55538086



PVC STEEL TOE/PLATE BOOT

- CSA Class 1 steel toe/steel plate
- Puncture and tear resistant
- Durable and flexible PVC shaft

SIZE 9 - 55537817 SIZE 11 - 55537808
SIZE 10 - 55537807 SIZE 12 - 55537809

BIO MED WASH FOR SKIN & EYES AEROSOL

- Sterile, heavy mist containing an all-natural, pH correct grade of water
- Helpful in removing particulate matter from cuts and abrasions, and in removing irritating chemicals from skin and eyes

1182784



207ML



12 PACK

EYEWASH SINGLE USE W/EYECUP

- Sterile irrigating solution washes the eye to help relieve irritation, discomfort, burning, stinging, and itching
- Includes eye cup attach (one time use)

1179705

LOCKOUT KITS AND ACCESSORIES

- LOCKOUT TAGS - 1178019 [497AD]
- SAFETY PADLOCK - 1178013 [410DRED]
- ROTATING LOCKOUT - 1178018 [487D]



#5 SECURITY PADLOCK

- Commercial grade padlock features superior protection from drilling and prying
- Dual ball bearing locking for maximum pry resistance
- Keyed differently

1178024 [5DCOM]



42" DELINEATOR

- Two 3" high performance bands of reflective tape
- Recessed areas to protect double collar reflective bands
- 12 lbs hex tube base

55542236



BARRICADE DANGER & CAUTION TAPE

- Polyethylene tape for quick marking of areas
- Highly visible warning of hazards and dangers
- 3" x 1000' roll

RED - 1177958
YELLOW - 1177959



MAY NOT BE EXACTLY AS SHOWN

SPILL CONTAINMENT TRAY

- Heavy-duty polyethylene construction - will not rust or corrode
- Designed for variety of spill containment and maintenance applications
- Ribbed bottom keeps cans, pails and other containers elevated above any spills or leaks

24X36X4-3/4" - 55541642 [1034]
36X36X4-3/4" - 55541643 [1035]
40X48X3-1/2" - 55541644 [1036]



UNIVERSAL SERVICE SPILL KIT

- Ideal for mobile transport vehicles
 - For non-aggressive spills
- Includes:** (10) pads, 10' sock, pair gloves, disposal bag

1181918 [CSKESKU]



WE ARE YOUR SOURCE FOR

CONSTRUCTION SCREWS

SIZES AVAILABLE

#8x1¼"	7,500 PCS / BUCKET 55515403
#8x1½"	5,000 PCS / BUCKET 1180987
#8x1¾"	4,000 PCS / BUCKET 55515398
#8x2"	3,500 PCS / BUCKET 1186126
#8x2½"	3,000 PCS / BUCKET 1180988
#8x3"	1,500 PCS / BUCKET 1180992
#10x3"	1,500 PCS / BUCKET 1180994
#10x3½"	1,000 PCS / BUCKET 1186127

AVAILABLE UP TO 6" LONG

YELLOW ZINC PLATED



WE CARRY A FULL RANGE OF YELLOW AND BROWN CONSTRUCTION & DECK SCREWS. ALSO AVAILABLE IN SMALLER JARS.

FORMING PRODUCTS

- FORM SYSTEM ACCESSORIES:**
 - Quickstrip
 - Snappy
 - Residential Ties
 - Camlock
 - Tapertys
 - Coil Rod, Connectors & Plate Washers
 - Form Ply
 - Stayform
- BAGGED REPAIR MIXES:**
 - Wall, Tilt & Ceiling Parging
 - Grouting
 - Vertical Overhead Repair
- FORMING CHEMICALS:**
 - Form Oils & Release Agents
 - Sealing & Curing Compounds
 - Bond Breakers
 - Retarders
 - Admixes
- REBAR:**
 - Rebar & Rebar Couplers
 - Plastic Chairs & Bolsters
 - Metal Continuous High Chair & Slab Bolster
- PLACING EQUIPMENT:**
 - Concrete Buckets
 - Vibrators
 - Rebar Tiers
- AND MUCH MORE:**
 - Architectural Form Liners
 - Finishing Tools
 - Curb Forms
 - Expansion Joints
 - ICF
 - Column Forms
 - Tilt Braces

THREADED ROD

WE STOCK IMPERIAL AND METRIC THREADED ROD

- FINISHES:**
 - Bare Metal
 - Zinc Plated
 - Hot Dipped Galvanized
 - Exotic Finishes
- THREADS:**
 - Coarse
 - Fine
 - Coil (Lag)
 - Acme
 - Right & Left Hand
- MATERIALS:**
 - Mild Steel
 - High Strength/B7
 - 8.8/10.9
 - Stainless Steel
 - 304/316
 - Brass
 - Aluminum
 - Nylon
- LENGTHS:**
 - 3ft
 - 10ft
 - 12ft
 - 1m

CUSTOM AND CUT LENGTHS AVAILABLE



STANDARD & SPECIAL NAILS

- COMMON NAILS**
BRIGHT FINISH
 - Smooth cylindrical shank with flat broad head
 - Used in construction framing/sheathing
- DUPLEX NAILS**
BRIGHT FINISH
 - Double headed with smooth shank for easy removal or temporary fastening
 - Used in formwork / restoration projects / temporary fixtures

We also offer nails for concrete/roofing/joist hanging/pallet manufacturing and metal/plastic cap - available in bulk, or collated (coils and strips). Finishes include bright/Hot Dipped Galvanized and Electro Galvanized.



DON'T FORGET YOUR TAPCON CONCRETE SCREWS

LENGTH RANGE: 1-1/4" TO 6"

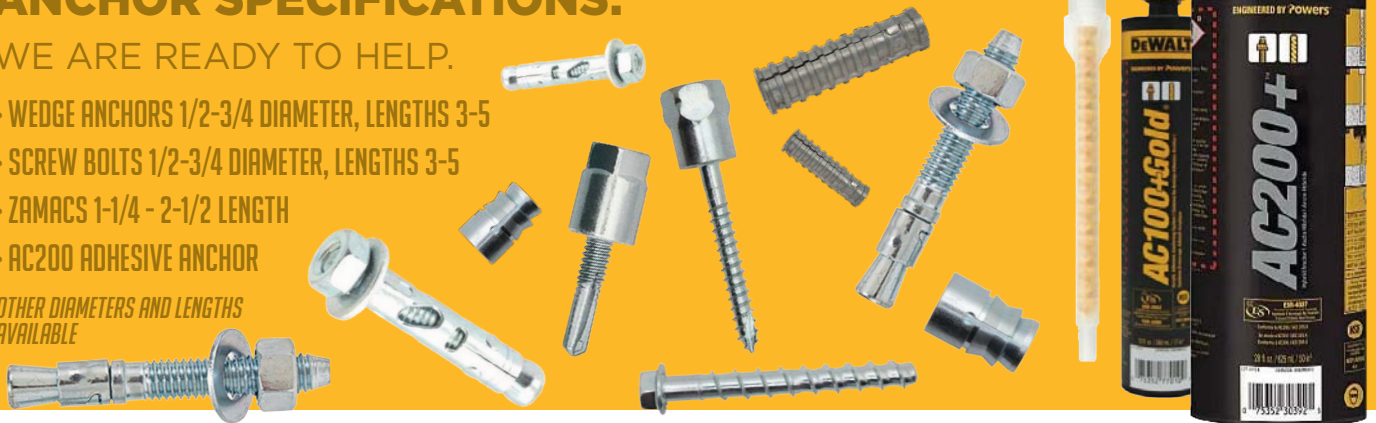


TALK TO US ABOUT MECHANICAL & CHEMICAL ANCHOR SPECIFICATIONS.

WE ARE READY TO HELP.

- > WEDGE ANCHORS 1/2-3/4 DIAMETER, LENGTHS 3-5
- > SCREW BOLTS 1/2-3/4 DIAMETER, LENGTHS 3-5
- > ZAMACS 1-1/4 - 2-1/2 LENGTH
- > AC208 ADHESIVE ANCHOR

OTHER DIAMETERS AND LENGTHS AVAILABLE



Concrete Insert Strut is embedded into concrete to facilitate a variety of hanging applications such as parking garages.

Why Ethafoam?

Foam is pre-installed into strut before the concrete is poured so the concrete does not flow through the strut.

Ethafoam is used because it comes out in one piece after the concrete has cured.



WEATHERSHIELD DEBRIS NETTING

- Edges reinforced with eyelets for quick attachment to scaffold structure using wire or ties

10X165' GREEN - 55503043 [409481]
 6.5X165' GREEN - 55503044 [409482]
 10X165' BLUE - 55503045 [411180]



CONCRETE INSULATED BLANKETS

- Closed cell foam insulation
- Fold over double stitched hem secures foam in place and strengthens grommeted edges

6X24' - 1184081
 8X24' - 1184082
 12X24' - 5555861
 12X20' - 0300390

*BC AND ALBERTA ONLY

WATERPROOF COATING ON BOTH SIDES



MAY NOT BE EXACTLY AS SHOWN

BEN-MOR®

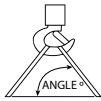
Hooked on SERVICE



ONE STOP RIGGING SHOP

Wire Rope • Cables Assemblies • Coated Cables • Accessories • Lifting Sling • Chain

ANGLE REDUCTION



Reduction of sling capacity depends on the angle of the Sling leg. See chart for loss factor.

Angle Degrees	Loss Factor
90°	1
85°	0.996
80°	0.985
75°	0.966
70°	0.94
65°	0.906
60°	0.866
55°	0.819
50°	0.766
45°	0.707
40°	0.643
35°	0.574
30°	0.500

CAUTION: SLING SHOULD FIT THE HOOK

On eye and eye type slings, the eyes must be of ample length to easily slip over the crane hook, thus reducing stress on stitching.

Rated capacities are affected by angle of lift (sling to load angle) measured from the horizontal when used with multi-legged slings or choker/basket hitches.

To determine the actual capacity at a given angle of lift, multiply the original sling rating by the appropriate loss factor determined from the table.

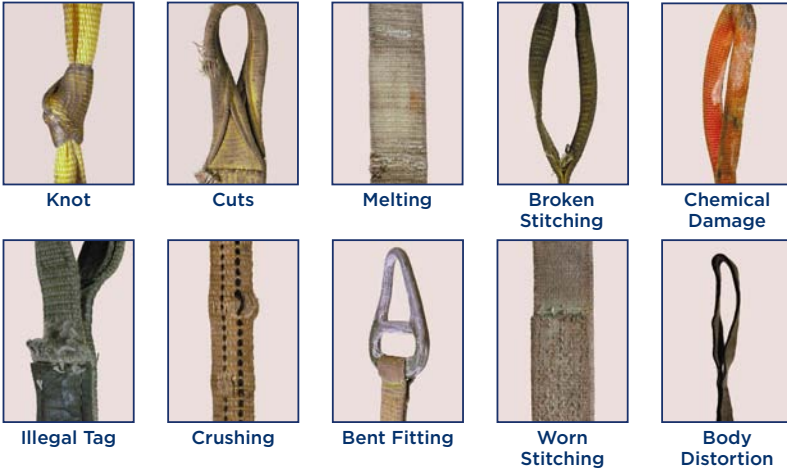
EXAMPLE:
 Web Sling Rating: **6,200 LBS** × 60° Angle Reduction: **.866** × Number Of Legs: **2** = **2 Leg Bridle EE2-902 10,730 LBS**

WARNING

Failure to comply with this warning may result in sling failure and severe personal injury or death.

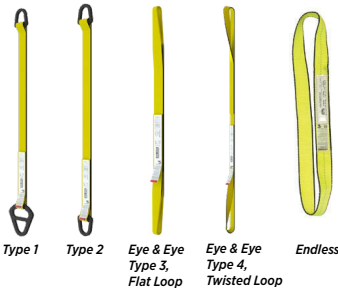
- ✓ Determine the weight of the load.
- ✓ Select sling having suitable characteristics for the type of load, hitch and environment.
- ✓ Slings shall not be loaded in excess of the rated capacity.
- ✓ Consideration should be given to the angle from the horizontal (load to sling angle) which affects rated capacity.
- ✓ Slings with fittings used in a choker hitch shall be of sufficient length to ensure that the choking action is on the web.
- ✓ Slings used in a basket hitch shall have the load balanced to prevent slippage.
- ✓ Slings shall not be dragged on the floor or over an abrasive surface.
- ✓ Slings shall not be twisted or tied into knots, or joined by knotting.
- ✓ Slings shall not be pulled from under loads when the load is resting on the sling.
- ✓ Slings shall always be protected from sharp corners, sharp edges, protrusions or abrasive surfaces.
- ✓ Do not drop slings equipped with metal fittings.

Remove your slings from service if any of the following is visible:



TYPES OF SLINGS

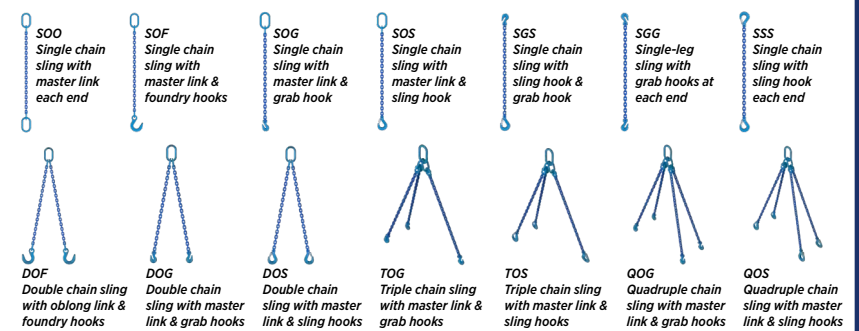
WEB SLINGS: SINGLE OR DOUBLE PLY



WIRE ROPE SLINGS EYE & EYE



GRADE 80 CHAIN SLINGS



BEN-MOR®

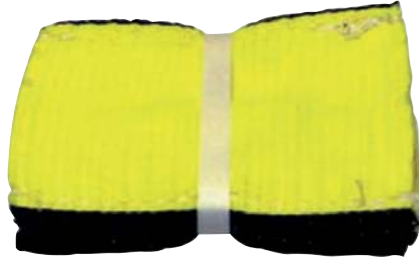
Hooked on SERVICE



DON'T FORGET YOUR WEAR PADS

- All slings should be protected against edges
- Make your slings last longer
- High abrasion resistance
- For use on 2" wide slings
- 2 per pack

4" X 12" - 1181124 [XXXXX]
4" X 24" - 1181125 [XXXXX]



YELLOW POLYESTER WEB SLINGS

- For your overhead lifting needs
- Use in vertical, choker or basket
- Flat or twisted eyes



Type 4



TYPE 4 - TWISTED EYE & EYE - DOUBLE PLY

Product #	Width	Length	Basket	Vertical	Choker
1181109	2"	4'	12,400 lbs	6,200 lbs	4,960 lbs
1181110	2"	6'	12,400 lbs	6,200 lbs	4,960 lbs
1181111	2"	8'	12,400 lbs	6,200 lbs	4,960 lbs
1181112	2"	10'	12,400 lbs	6,200 lbs	4,960 lbs
1181113	2"	12'	12,400 lbs	6,200 lbs	4,960 lbs
1181114	2"	16'	12,400 lbs	6,200 lbs	4,960 lbs
1181115	2"	20'	12,400 lbs	6,200 lbs	4,960 lbs
1181116	3"	6'	17,600 lbs	8,800 lbs	7,040 lbs
1181117	4"	6'	22,000 lbs	11,000 lbs	8,800 lbs

Maximum capacity for new slings - do not exceed

POLYESTER ROUND SLINGS

- Easy to rig, store and clean
- Excellent resistance to ultra-violet light, rot and mildew
- Wide variety of sling lengths and load capacities
- No loss of strength in water, no metal parts to rust
- Flexible and light weight



Product #	Color/Code	Length	90 ° Basket	Vertical	Choker
1181118	Green/SL60	6'	12,000 lbs	6,000 lbs	4,800 lbs
55522480	Green/SL60	10'	12,000 lbs	6,000 lbs	4,800 lbs
55522485	Red/SL40	6'	28,000 lbs	14,000 lbs	11,200 lbs
55522487	Red/SL40	10'	28,000 lbs	14,000 lbs	11,200 lbs

GOLDEN SCREW PIN ANCHOR SHACKLES

- With wire rope hardware
- Heat treated carbon steel bows with alloy pin
- Hot dipped galvanized finish for good corrosion resistance
- Shackle bodies permanently embossed with WLL and size

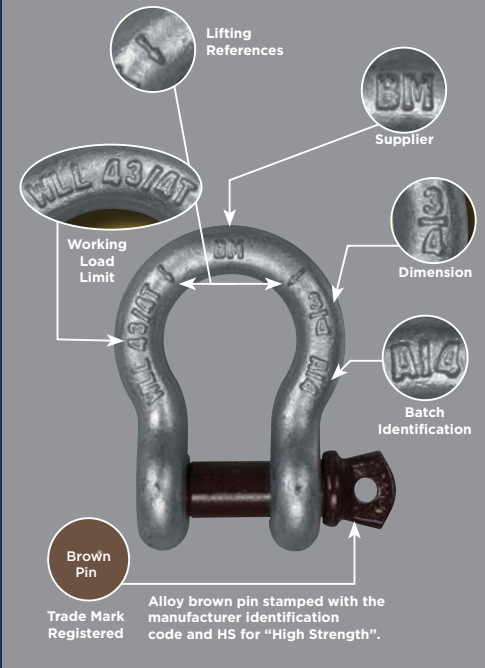


Brown Pin®

Product #	Size	Working Load Limit
55521826	3/16"	1/3 TON
1181150	1/4"	1/2 TON
55521827	5/16"	3/4 TON
1181151	3/8"	1 TON
1181152	7/16"	1-1/2 TON
1181153	1/2"	2 TON
1181154	5/8"	3-1/4 TON
1181155	3/4"	4-3/4 TON
1181156	1"	8-1/2 TON

Brown Pin®
Shackles
Ben-Mor

US Federal Specs
RR-C-271G-16
ASME B30.26



YOUR ONE-STOP-SHOP FOR TOOLS & EQUIPMENT



Milwaukee®

Nothing but **HEAVY DUTY.**®



DEWALT®

GUARANTEED TOUGH.



**CONCRETE
TOTAL SOLUTIONS™**

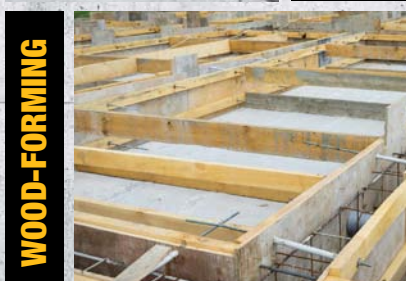
FROM PREP TO PLACEMENT



TILT-UP



DEMO



WOOD-FORMING



REINFORCEMENT

YOUR ONE-STOP-SHOP FOR TOOLS & EQUIPMENT



**HAND TOOLS,
FLOATS,
TROWELS
& MORE**



**BARTELL
GLOBAL**

— YOUR SOURCE FOR —
**COMPACTION,
TROWELS,
VIBRATORY PLATES**

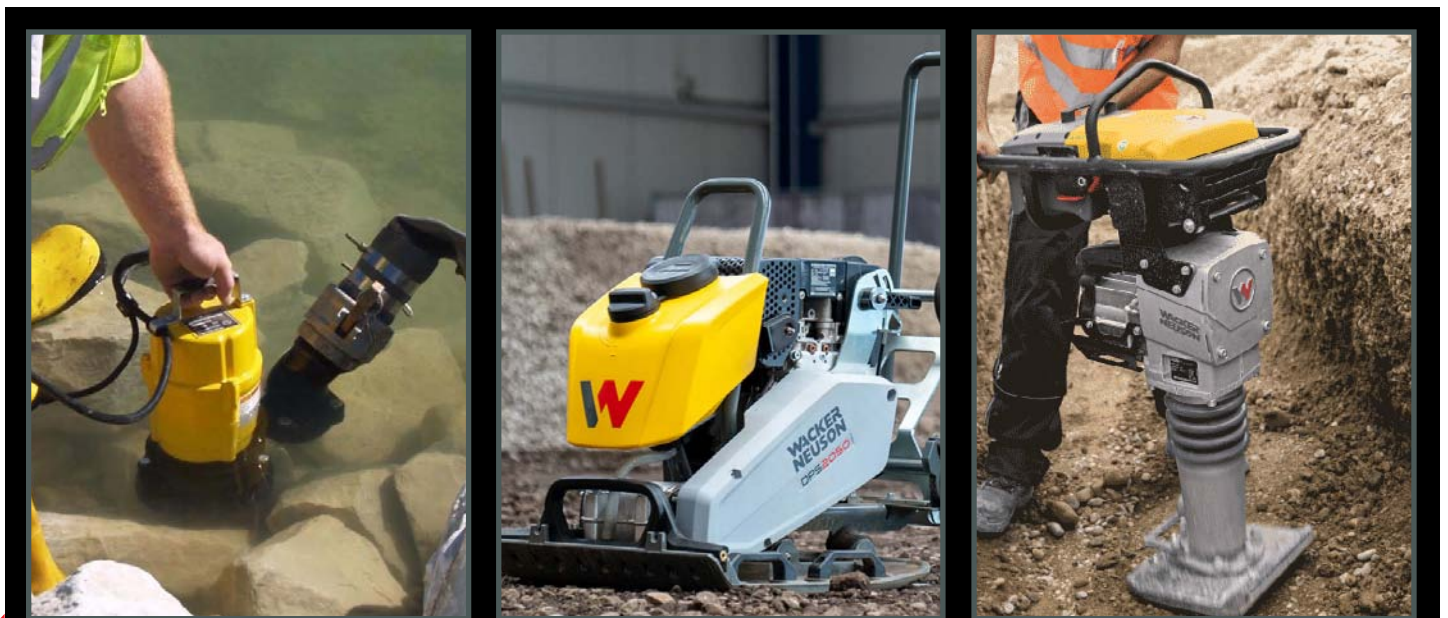


YOUR ONE-STOP-SHOP FOR TOOLS & EQUIPMENT



 **BOSCH**

TOUGH WORK MADE EASIER WITH
PROFESSIONAL BOSCH CORDLESS SOLUTIONS



**WACKER
NEUSON**

**SUBMERSIBLE PUMPS
VIBRATORY PLATES
VIBRATORY RAMMERS**

YOUR ONE-STOP-SHOP FOR TOOLS & EQUIPMENT



Husqvarna

MODEL K770 SHOWN



MAX *ENGINEERED FOR PERFORMANCE*

**REDUCE INJURIES
WITH MAX REBAR
TYING TOOLS!**

SCAN TO VIEW
SAFETY REPORT



30
YEARS
ANNIVERSARY
Since 1993
RE-BAR-TIER



MQ
MULTIQUIP

RAMMERS
PLATE COMPACTION
RIDE-ON TROWELS
WALK-BEHIND TROWELS
CONCRETE MIXERS



ACROW-RICHMOND
THE HIDDEN STRENGTH™
LA FORCE CACHÉE



CONCRETE FORMING



CONCRETE ANCHORING



BRIDGE DECK FORMING & HANGING



PRECAST



ROCK & BOLT ANCHORING

Customized solutions for all your concrete forming needs.

- Full-line manufacturer of concrete form hardware inside our 100,000 sq. ft. Toronto-based facility
- Dedicated account manager as your single point of contact for all your jobsite demands
- Personalized support and customer service throughout our branches across Canada
- Extensive inventory and product availability on our in-house manufactured products



Our experts support your team to identify cost-effective solutions that fit your project.



Working shoulder to shoulder with our engineers to develop customized concrete forming resources.



Reliable and flexible delivery options for all your construction supplies.

BUILDING TRUST ON EVERY JOB

White Cap combines Brafasco, National Concrete Accessories and Brock White Construction Materials into One Team, dedicated to superior customer service. We provide customers an outstanding offering of professional-grade construction materials, industrial and safety supplies from leading brands. With 65+ locations across Canada, trust us for your next project.



WHITE CAP



If you are looking for an item not shown, please call your sales representative for assistance. White Cap Supply Canada Inc. attempts to describe and display its products accurately and is not responsible for errors or omissions. Pictures, prices, specifications or availability may not represent the advertised item. We reserve the right to change or update information. We also reserve the right of resale and may limit the amount sold.