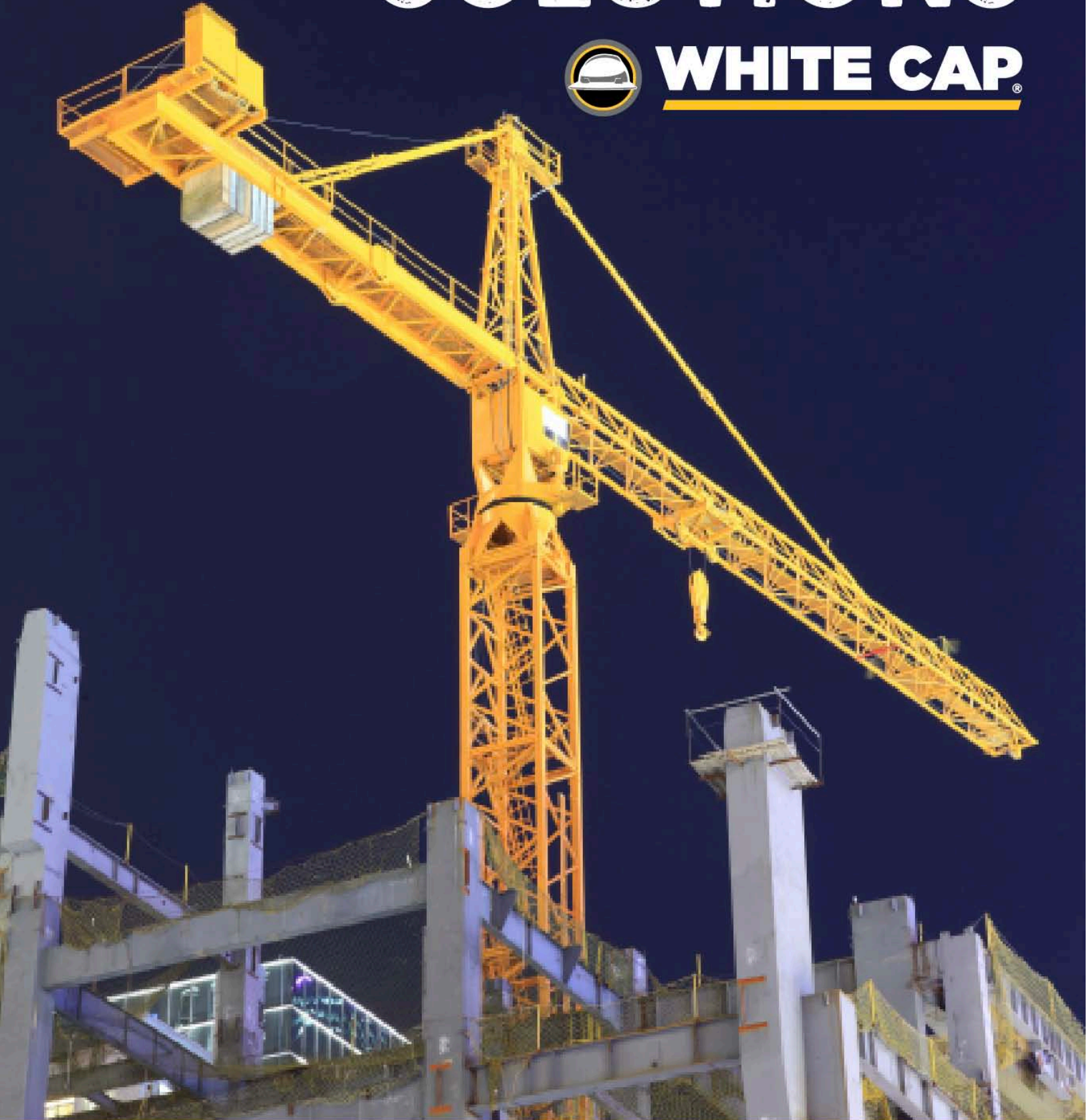


# CONCRETE SOLUTIONS



**WHITE CAP**<sup>®</sup>





BRAFASCO ATTEMPTS TO DESCRIBE AND DISPLAY ITS PRODUCTS ACCURATELY. DESPITE THESE EFFORTS, SOME ITEMS MAY BE MISTYPED, DESCRIBED INACCURATELY, UNAVAILABLE, OR SUBJECT TO SEASONALITY. AS A RESULT, WE CANNOT AND DO NOT GUARANTEE THE ACCURACY OR COMPLETENESS OF ANY INFORMATION INCLUDING AND NOT LIMITED TO: PRICES, PACKAGING, PRODUCT IMAGES, SPECIFICATIONS OR AVAILABILITY. WE RESERVE THE RIGHT TO CHANGE OR UPDATE INFORMATION, PRODUCT AVAILABILITY AND TO CORRECT ERRORS, INACCURACIES OR OMISSIONS AT ANY TIME WITHOUT PRIOR NOTICE.

# ROAD & BRIDGE

PG  
11-12



**Concrete Repair  
Mortar &  
Structural Grout**

PG  
13-18



**Concrete Forming  
Accessories**

PG  
19



**Curing  
Compound**

PG  
21



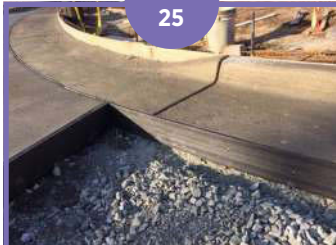
**Protection  
Board**

PG  
23-24



**Insulation**

PG  
25



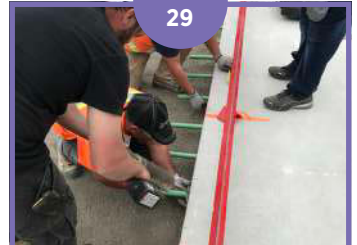
**Expansion  
Joints**

PG  
27-28



**Joint  
Sealants**

PG  
29



**Adhesive  
Anchors**



# MASS TRANSIT

PG  
11-12



Concrete Repair  
Mortar &  
Structural Grout

PG  
13-18



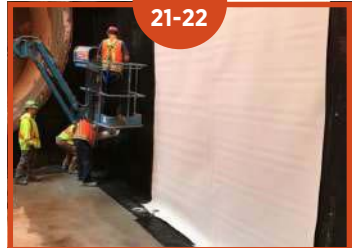
Concrete Forming  
Accessories

PG  
20



Insulated Curing  
Blankets

PG  
21-22



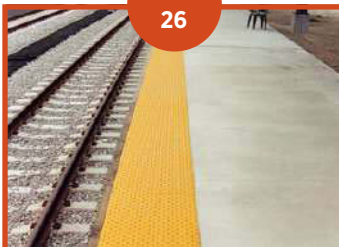
Waterproofing

PG  
23-24



Insulation

PG  
26



Tactile

PG  
27-28



Joint Sealants  
& Firestop

PG  
29-30



Concrete  
Anchors

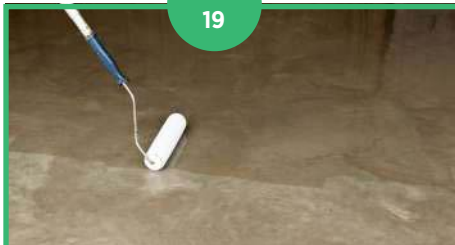
# HEAVY INDUSTRIAL

PG  
11-12



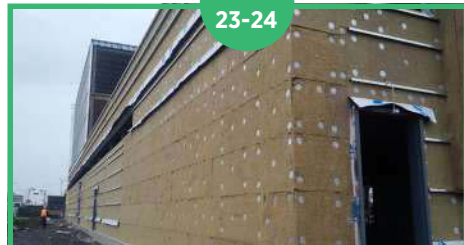
**Concrete Repair  
Mortar &  
Structural Grout**

PG  
19



**Concrete Chemicals &  
Curing Accessories**

PG  
23-24



**Air and Vapour  
Barrier & Insulation**

PG  
25-26



**Expansion Joints  
& Tactile**

PG  
27-28



**Joint Sealants  
& Firestop**

PG  
29



**Adhesive  
Anchors**

# WASTEWATER TREATMENT

PG  
11-12



**Concrete Repair Mortar  
& Structural Grout**

PG  
13-18



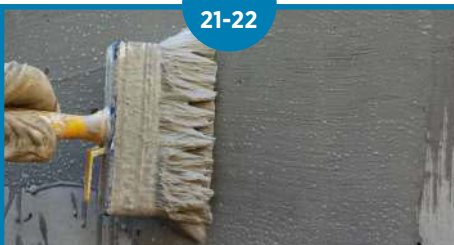
**Concrete Forming  
Accessories**

PG  
19-20



**Concrete Chemicals  
& Curing Accessories**

PG  
21-22



**Waterproofing**

PG  
23



**Under-Slab  
Vapour Barrier**

PG  
23-24

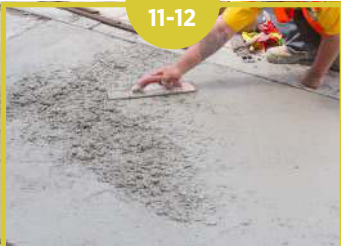


**Insulation**



# CURBS & SIDEWALKS

PG  
11-12



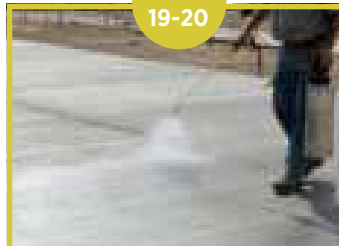
**Concrete Repair  
Mortar &  
Structural Grout**

PG  
13-18



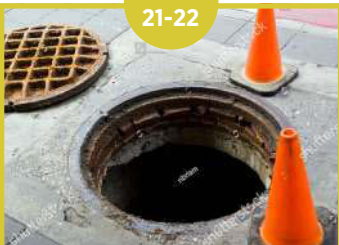
**Concrete Forming  
Accessories**

PG  
19-20



**Concrete Chemicals  
& Curing  
Accessories**

PG  
21-22



**Waterproofing**

PG  
25-26



**Expansion Joints  
& Tactile**

PG  
27-28



**Joint  
Sealants**

PG  
32



**Safety**



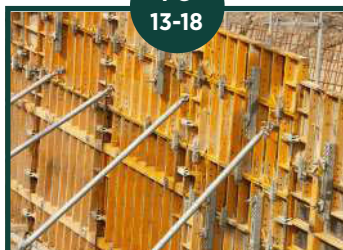
# FOUNDATION CONSTRUCTION

PG 11-12



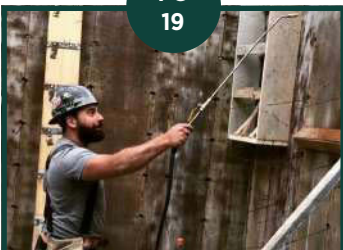
**Concrete Repair Mortar & Structural Grout**

PG 13-18



**Concrete Forming Accessories**

PG 19



**Form Release**

PG 20



**Insulated Curing Blankets**

PG 21-22



**Waterproofing**

PG 24



**Insulation**

PG 23



**Insulation Fasteners**

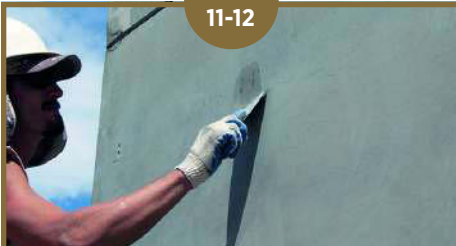
PG 27-28



**Joint Sealants**

# BUILDING ENVELOPE

PG  
11-12



**Concrete Repair Mortar  
& Structural Grout**

PG  
27-28



**Firestop**

PG  
23



**Fall Protection**

PG  
23



**Air & Vapour  
Barrier**

PG  
23-24



**Insulation**

PG  
27-28



**Joint  
Sealants**

# BALCONY

PG  
11-12



**Concrete Repair  
Mortar &  
Structural Grout**

PG  
22



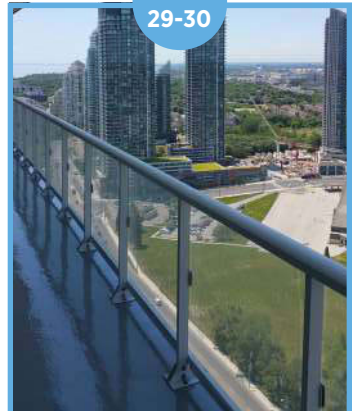
**Pedestrian Traffic  
Coating**

PG  
27-28



**Joint  
Sealants**

PG  
29-30



**Concrete Anchors**



# PARKING GARAGE

PG  
11-12



**Concrete Repair  
Mortar &  
Structural Grout**

PG  
19



**Curing and Sealing  
Compounds**

PG  
22



**Vehicular & Pedestrian  
Traffic Coatings**

PG  
23



**Insulation Fastener**

PG  
27-28

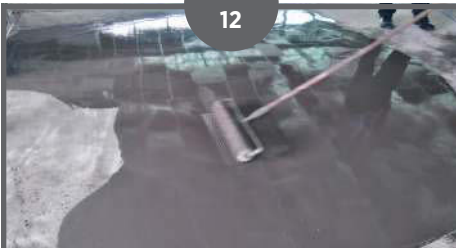


**Joint  
Sealants**



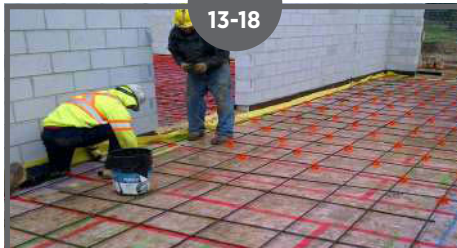
# FLOORING

PG  
12



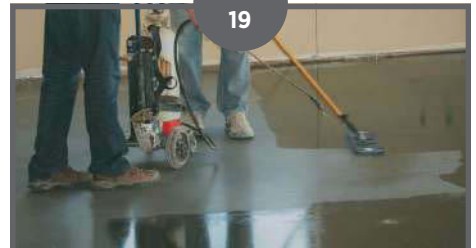
**Architectural Toppings**

PG  
13-18



**Concrete Forming  
Accessories**

PG  
19



**Hardeners & Densifiers**

PG  
23



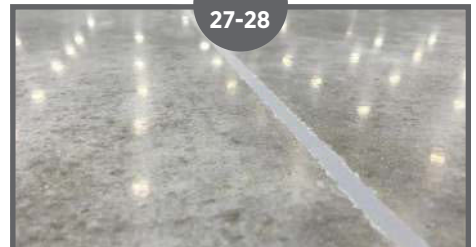
**Underslab Vapour Barrier**

PG  
23-24



**Insulation**

PG  
27-28



**Joint Sealants**

# CONCRETE & GROUT

## VERTICAL AND OVERHEAD REPAIR MORTARS

- Ideal for smaller and surface repairs
- Can be used for structural repairs
- Valid for exterior or interior usage
- Applicable for above or below grade



PRODUCT NO.	DESCRIPTION	CAPACITY
BSF51671702	BASF MASTEREMACO S488CI MORTAR	55 LB BAG
BSF51676154	BASF MASTEREMACO N425 MORTAR	43 LB BAG
EUC161V46	EUCOREPAIR V100 RAPID SET REPAIR MORTAR	46 LB BAG
CTS151010050	RS REPAIR MIX VERTICAL/OVERHEAD MATERIAL	50 LB BAG
CTS140010055	RS MORTAR MIX HIGH-STRENGTH REPAIR MORTAR	55 LB BAG

## HORIZONTAL REPAIR MORTAR

- Small and architectural repairs
- Structural and full depth concrete repairs
- Valid for exterior or interior usage
- Flowable materials to encapsulate reinforcement



PRODUCT NO.	DESCRIPTION	CAPACITY
BSF51701276	BASF MASTEREMACO T545 MORTAR	50 LB BAG
BSF50517189	BASF MASTEREMACO T1060EX REPAIR MORTAR	50 LB BAG
BSF55404987	BASF MASTEREMACO T1060 MORTAR	50 LB BAG
BSF51671543	BASF MASTEREMACO S466CI MORTAR	55 LB BAG
CTS1430010055	RS MORTAR MIX PLUS HIGH-STRENGTH REPAIR MORTAR	55 LB BAG
CTS120010055	RS CEMENT-ALL HIGH-STRENGTH NON-SHRINK GROUT	55 LB BAG
CTS193010025	RS CR CONCRETE RESURFACER	25 LB BAG

## SMOOTHING AND PATCHING COMPOUND

- Easy to use
- Used for vertical and overhead surfaces only
- Ultra-Smooth Finish: Grit free and sandable within 24 hours



PRODUCT NO.	DESCRIPTION	CAPACITY
CTS703010050	RS WUNDERFIXX CONCRETE PATCHING COMPOUND	50 LB BAG

## SELF-CONSOLIDATING REPAIR MORTARS

- Structural and full depth concrete repairs
- No need to use consolidation tools
- Pumpable with small and large equipment
- High Flow



PRODUCT NO.	DESCRIPTION	CAPACITY
BSF51713201	BASF MASTEREMACO S440MC POUR/PUMP REPAIR MORTAR	55 LB BAG

## CEMENTITIOUS NON SHRINK GROUT

- Support structures, equipment and machinery
- Transfer small to medium loads and vibrations
- Fills voids in concrete structures



PRODUCT NO.	DESCRIPTION	CAPACITY
BSF51681772	BASF MASTERFLOW 928 GROUT	55 LB BAG
BSF51681719	BASF MASTERFLOW 713 HIGH-PRECISION NS GROUT	55 LB BAG
BSF51680871	BASF MASTERFLOW 555 NON-SHRINK GROUT	50 LB BAG
BSF51669264	BASF MASTERFLOW 100 NON-SHRINK GROUT	50 LB BAG
EUC08850	NS NON-SHRINK NON-METALLIC GROUT	50 LB BAG

## EPOXY GROUTS

- Designed to support equipment and machinery subjected to high loads and high vibrations
- Offers chemical resistance
- High resistance to fatigue



PRODUCT NO.	DESCRIPTION	CAPACITY
BSF25013246	BASF MASTERFLOW 678 DEEP POUR GROUT	1.8 CF KIT
BSF25027026	BASF MASTERFLOW 648 EPOXY GROUT	1.7 CF KIT

## CEMENT POWDERS

- Pure Portland Cement and pre-blended mix (Sand, gravel)
- To be used for general concrete and masonry work
- Can be modified with acrylic admixtures if desired



PRODUCT NO.	DESCRIPTION	CAPACITY
QUK113736	QUIKRETE MASON MIX TYPE S MORTAR	80 LB BAG
QUK113738	QUIKRETE PM VENEER STONE MORTAR	80 LB BAG
QUK405942	QUIKRETE PORTLAND CEMENT TYPE 10	44 LB BAG
CTS101010088	RS CEMENT FAST SETTING HYDRAULIC CEMENT	88 LB BAG

## PRE-MIXED CONCRETE BLENDS

- Pre-blended mix of cement, sand, and gravel or stone.
- Just add water. Use for any general concrete work



PRODUCT NO.	DESCRIPTION	CAPACITY
QUK110125	QUIKRETE READY-TO-USE CONCRETE MIX	55 LB BAG
QUK110130	QUIKRETE READY-TO-USE CONCRETE MIX	66 LB BAG
CTS130010060	RS CONCRETE MIX VERY RAPID HARDENING CONCRETE	60 LB BAG

# CONCRETE & GROUT

## BONDING AGENTS

- Used to modify concrete mixes to improve adhesion, increase impact resistance and enhance freeze-thaw stability for longer-lasting, more durable repairs



PRODUCT NO.	DESCRIPTION	CAPACITY
BSF50392792	BASF MASTEREMACO P124 EPOXY BONDING AGENT/RC	2.7 GAL KIT
BSF51656438	BASF MASTEREMACO A660 ACRYLIC ADMIXTURE	5 GAL PAIL
BSF55350538	BASF MASTEREMACO A660 ACRYLIC ADMIXTURE	1 GAL JUG
EUC06955	FLEX-CON ACRYLIC LATEX BONDING ADMIXTURE	55 GAL DRUM
EUC06905	FLEX-CON ACRYLIC LATEX BONDING ADMIXTURE	5 GAL PAIL
EUC06995	FLEX-CON ACRYLIC LATEX BONDING ADMIXTURE	1 GAL

## UNDERLAYMENT PRIMERS

- Used with self-leveling underlayments as initial bonding material



PRODUCT NO.	DESCRIPTION	CAPACITY
CTS181040000	RS ACRYLIC PRIMER HIGH-ADHESION ACRYLIC LATEX	1 GAL
CTS185040000	RS TXP FAST TRU EPOXY PRIMER TWO-COMPONENTS	3 GAL KIT

## REBAR COATINGS

- Provides corrosion protection on steel reinforcement



PRODUCT NO.	DESCRIPTION	CAPACITY
RUS261937	RUSTOLEUM GREEN RE-BAR EPOXY AEROSOL	12 OZ CAN
RUS206193	RUSTOLEUM HP FLAT COLD GALV	1 GAL

## EPOXY INJECTION CRACK REPAIR

- Structurally bond concrete surfaces
- Moisture tolerant
- 100% Solids epoxy
- Seals and fills voids in concrete



PRODUCT NO.	DESCRIPTION	CAPACITY
EUCTD5323110NC	DURAL FAST SET EPOXY GEL ADHESIVE	10 GAL UNIT
EUCTD5323115NC	DURAL FAST SET EPOXY GEL ADHESIVE	10 OZ CARTRIDGE
EUCTD5323104NC	DURAL FAST SET EPOXY GEL ADHESIVE	4 GAL UNIT
EUCTD5324115	DURAL FAST SET EPOXY LV ADHESIVE	10 OZ CARTRIDGE
EUCTD5324122	DURAL FAST SET EPOXY LV ADHESIVE	22 OZ CARTRIDGE

## UNDERLAYMENTS

- Designed for fast track leveling applications
- Can be covered with finished flooring in 4 to 16 hours at 70°F (21°C), depending on the flooring type
- High flowability for easy installation
- Fast, durable and economical solution



PRODUCT NO.	DESCRIPTION	CAPACITY
CTS187010050	RS LEVELFLO SELF-LEVELING UNDERLAYMENT	50 LB BAG

## ARCHITECTURAL TOPPING

- Designed specifically for polishing and decorative flooring applications
- Suitable for dry and wet areas
- polished concrete floors in schools, airports, warehouses, retail, restaurants, lobbies, and more



PRODUCT NO.	DESCRIPTION	CAPACITY
CTS133010060	RS TRU PC SELF-LEVELING TOPPING BAG	60 LB BAG
CTS180010050	RS TRU SELF-LEVELING ARCHITECTURAL TOPPING	50 LB BAG
CTS181010050	RS TRU GRAY SELF-LEVELING ARCHITECTURAL TOPPING	50 LB BAG

## POLYURETHANE INJECTION GROUT

- Fill voids in concrete structures
- Seals cracks by expanding reaction with water
- Flexible
- Controls water ingress in concrete structures



PRODUCT NO.	DESCRIPTION	VOLUME
AVMITSKIT100	INJECTION TUBE SYSTEM - 100' KIT	---
AVM902GROUT5	AUSSIE GROUT 902 - FLEXIBLE INJECTION GROUT	5 GAL
AVM902GROUT32	AUSSIE GROUT 902 CATALYST	32 OZ CAN

THE MOST KNOWLEDGEABLE PROS IN  
CONSTRUCTION & INDUSTRIAL SUPPLIES

## ONE STOP SHOPPING FOR ALL SKILLED TRADES

- We stock the hard to find items
- Expertise sourcing of non-stock and custom items quickly
- Customized vendor managed inventory solutions for the shop and jobsite
- Experienced and knowledgeable sales team
- Centralized order desk that services all of Canada

**BRAFASCO**  
A WHITE CAP COMPANY

CALL 1.888.BRAFASCO (1.888.272.3272)  
OR ONLINE AT  
WWW.BRAFASCO.COM

FOLLOW US!

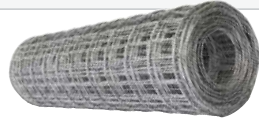


**BRAFASCO**  
A WHITE CAP COMPANY

# CONCRETE FORMING ACCESSORIES

## CONCRETE WIRE MESH

- Allows for thinner slab pours
- Available in bare or galvanized
- Protects against future cracking by providing a framework for concrete to hold



PRODUCT NO.	DESCRIPTION	SIZE
CNC1010545	WIRE MESH 10G 6"X6" MESH	4'X8' SHEET
CNC1010610	WIRE MESH ROLL 10G 6"X6" MESH	6'X200' ROLL
CNC1010535	WIRE MESH 6G 6"X6" MESH	4'X8' SHEET
CNC1010575	WIRE MESH 6G 6"X6" MESH	8'X20' SHEET
CNC1010540	WIRE MESH 9G 6"X6" MESH	4'X8' SHEET
CNC1010600	WIRE MESH ROLL 9G 6"X6" MESH	6'X200' ROLL

## WALL PLATE ASSEMBLY

- Mounts C49 directly to 3/4" diameter insert cast in a precast/prestressed concrete box girder



PRODUCT NO.	DESCRIPTION
DSC100204	C51 WALL PLATE ASSEMBLY

## TURNBUCKLE FORM ALIGNER

- 1" Diameter self-cleaning coilthread for fast adjustments
- 37" - 49" Length



PRODUCT NO.	DESCRIPTION	SIZE
DSC49210	DS A27 TURNBUCKLE FORM ALIGNER	37"-40" W/BENT PLATE

## COIL THREAD HANDLE NUT

- Also known as: welded handle nut, handle lagnut
- Bare finish



PRODUCT NO.	DESCRIPTION	SIZE
FISTE5005650	COIL THREAD HANDLE NUT	1/2" BARE
FISTE5005660	COIL THREAD HANDLE NUT	3/4" BARE
FISTE5005670	COIL THREAD HANDLE NUT	1" BARE

## REBAR PROTECTION CAP

- Available for all rebar sizes
- OSHA C-1730-AG Compliant



PRODUCT NO.	DESCRIPTION	COLOUR
CNC310950000	REBAR CAP MUSHROOM TYPE (#3 TO #9)	ORANGE
CNC310950005	REBAR CAP SQUARE TYPE 4X4" (#3 TO #7)	ORANGE
CNC310950006	REBAR CAP SQUARE TYPE 4X4" (#8 TO #11)	ORANGE
CNC310950010	REBAR CAP Y-TYPE FOR 2X4" LUMBER (#4 TO #9)	YELLOW

## LOOP TIES

- Single metal bar that loops at the end for locking systems, such as a wedge and pin



PRODUCT NO.	DESCRIPTION	QUANTITY
INDUS2000034	TIE WIRE LOOPS 16GA 6" BRIGHT	2500/BUNDLE
INDUS2000035	TIE WIRE LOOPS 16GA 7" BRIGHT	2500/BUNDLE
INDUS2000036	TIE WIRE LOOPS 16GA 8" BRIGHT	500/BUNDLE

## DROP IN FOR COIL ROD

- Used for 1/2" and 3/4" coil rod



PRODUCT NO.	DESCRIPTION	SIZE
UCACTD341	UCAN DROP IN COIL THREAD	3/4 (1BIT) NO LIP
UCACTD1258	UCAN DROP IN COIL THREAD	1/2 (5/8BIT) NO LIP

## PVC TUBING

- Pvc tube type 1, grade 1 used for forming



PRODUCT NO.	DESCRIPTION	SIZE
CONTACT US	02500	1/2"X5' TUBING

## TIE WIRE

- Commonly used for tying and fixing in concrete construction links between steel bars, providing reinforcement
- Available in different gage sizes



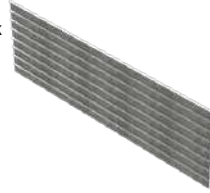
PRODUCT NO.	DESCRIPTION	WEIGHT
TW27	PRECUT TIE WIRE 18GA 27" HDG	25 LBS
TW16VC	GENERAL PURPOSE TIE WIRE STEEL 16GA PVC GREEN	2.5 LB/COIL
INDUS2000050	GENERAL PURPOSE TIE WIRE STEEL 16GA BLACK	3.125 LB/COIL



# CONCRETE FORMING ACCESSORIES

## STAYFORM

- Also known as expanded metal stay in place formwork
- For tough forming situations that can bend to form curves
- Easily cut and installed in the field
- No form stripping, clean up refacing, or oil required
- 27" X 97" size



PRODUCT NO.	DESCRIPTION	SIZE
INDUS8400270	FLEXIBLE METAL RIB/STAY FORM	27X96" SHEET

## SCAFFOLD BRACKET

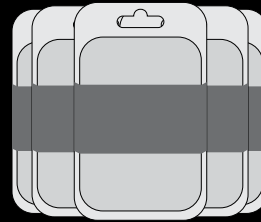
- Manufactured from high strength steel
- Supports scaffolding on nearly any type of formwork.
- Meets osha minimum requirements



PRODUCT NO.	DESCRIPTION
DSC30310	DS A90 SCAFFOLD BRACKET JACK

**ASK ABOUT OUR VOLUME DISCOUNTS**

**BRAFASCO**  
A WHITE CAP COMPANY



## PLASTIC SLAB BOLSTER

- Continued support for elevated slab, tilt- wall, precast post tension, parking garage decks - side form spacer
- High-load strength and impact-resistant
- Can be used individually or locked



PRODUCT NO.	DESCRIPTION	SIZE
DSC78096	DS PSB AZTEC E-Z LOK SLAB BOLSTER 50/PACK	3"X2-1/2'
DSC78091	DS PSB AZTEC E-Z LOK SLAB BOLSTER 50/PACK	2-3/4"X2-1/2'
DSC78086	DS PSB AZTEC E-Z LOK SLAB BOLSTER 50/PACK	2-1/2"X2-1/2'
DSC78076	DS PSB AZTEC E-Z LOK SLAB BOLSTER 60/PACK	2-1/4"X2-1/2'
DSC78036	DS PSB AZTEC E-Z LOK SLAB BOLSTER 100/PACK	1-1/4"X2-1/2'
DSC78026	DS PSB AZTEC E-Z LOK SLAB BOLSTER 110/PACK	1"X2-1/2'
DSC78016	DS PSB AZTEC E-Z LOK SLAB BOLSTER 130/PACK	3/4"X2-1/2'

## SLAB BOLSTER

- A continuous metal bar support used to maintain the elevation of rebar in reinforced concrete
- Consists of two runner wires and a top supporting wire, connected by evenly spaced legs



PRODUCT NO.	DESCRIPTION	SIZE
CNC3108300100	SLAB BOLSTER DIPPED 100FT/BDL	1"
CNC3108300101	SLAB BOLSTER DIPPED 100FT/BDL	1-1/4"
CNC3108300102	SLAB BOLSTER DIPPED 1-1/2" 100FT/BDL	1-1/2"

## CONTINUOUS HIGH CHAIR

- Supports upper slab steel from slab form surface
- Substitutes for individual chair supports
- 5' Lengths with legs spaced 7-1/2" centers
- Manufactured to the recommendations or specifications
- Of the concrete reinforcing steel institute (crsi)
- Bare plastic dipped



PRODUCT NO.	DESCRIPTION	SIZE
CNC3108300200	CONTINUOUS HIGH CHAIR DIPPED 100FT/BDL	5"
CNC3108300201	CONTINUOUS HIGH CHAIR DIPPED 100FT/BDL	5-1/4"
CNC3108300202	CONTINUOUS HIGH CHAIR DIPPED 100FT/BDL	5-1/2"
CNC3108300203	CONTINUOUS HIGH CHAIR DIPPED 100FT/BDL	5-3/4"
CNC3108300204	CONTINUOUS HIGH CHAIR DIPPED 100FT/BDL	6"
CNC3108300205	CONTINUOUS HIGH CHAIR DIPPED 100FT/BDL	6-1/4"
CNC3108300206	CONTINUOUS HIGH CHAIR DIPPED 100FT/BDL	6-1/2"
CNC3108300207	CONTINUOUS HIGH CHAIR DIPPED 100FT/BDL	6-3/4"
CNC3108300208	CONTINUOUS HIGH CHAIR DIPPED 100FT/BDL	7"
CNC3108300209	CONTINUOUS HIGH CHAIR DIPPED 100FT/BDL	7-1/4"
CNC3108300210	CONTINUOUS HIGH CHAIR DIPPED 100FT/BDL	7-1/2"
CNC3108300211	CONTINUOUS HIGH CHAIR DIPPED 100FT/BDL	7-3/4"
CNC3108300212	CONTINUOUS HIGH CHAIR DIPPED 100FT/BDL	8"
CNC3108300213	CONTINUOUS HIGH CHAIR DIPPED 100FT/BDL	8-1/2"
CNC3108300214	CONTINUOUS HIGH CHAIR DIPPED 100FT/BDL	9"
CNC3108300215	CONTINUOUS HIGH CHAIR DIPPED 100FT/BDL	9-1/2"

## INDIVIDUAL PLASTIC REBAR CHAIRS

- All plastic chairs or individual chairs are used in slabs for supporting all types of reinforcing steel, or wherever a corrosion free support is required
- Sold in bag quantity only



PRODUCT NO.	DESCRIPTION	SIZE
CNC3108300505	INDIVIDUAL PLASTIC CHAIR	1"
CNC3108300510	INDIVIDUAL PLASTIC CHAIR	1-1/4"
CNC3108300515	INDIVIDUAL PLASTIC CHAIR	1-1/2"
CNC3108300520	INDIVIDUAL PLASTIC CHAIR	2"
CNC3108300525	INDIVIDUAL PLASTIC CHAIR	2-1/2"
CNC3108300530	INDIVIDUAL PLASTIC CHAIR	3"
CNC3108300535	INDIVIDUAL PLASTIC CHAIR	3-1/2"
CNC3108300540	INDIVIDUAL PLASTIC CHAIR	4"
CNC3108300545	INDIVIDUAL PLASTIC CHAIR	4-1/2"
CNC3108300550	INDIVIDUAL PLASTIC CHAIR	5"
CNC3108300555	INDIVIDUAL PLASTIC CHAIR	5-1/2"
CNC3108300560	INDIVIDUAL PLASTIC CHAIR	6"
CNC3108300565	INDIVIDUAL PLASTIC CHAIR	6-1/2"

## CONTACT US TODAY

☎ 1.888.272.3272

✉ [canadianservice@brafasco.com](mailto:canadianservice@brafasco.com)

🌐 [Brafasco.com](http://Brafasco.com)

# CONCRETE FORMING ACCESSORIES

## SCREW ON SET BACK CONE

- For backing the cones off screw-on coil ties
- Use a cone wrench to back the cone off the tie
- Tyscru cones are designed to fit all tyscru sizes/diameters with various set backs.
- Removable with hex wrench and reusable



PRODUCT NO.	DESCRIPTION	SIZE
DSC35135	DS B30 SCREW-ON PLASTIC CONE	3/4" COIL SIZE X1" SETBACK
DSC35137	DS B30 SCREW-ON PLASTIC CONE	3/4" COIL SIZE X2" SETBACK
DSC35138	DS B30 SCREW-ON PLASTIC CONE	1" COIL SIZE X2" SETBACK
DSC35140	DS B30 SCREW-ON PLASTIC CONE	1" COIL SIZE X1" SETBACK
DSC35151	DS B30 SCREW-ON PLASTIC CONE	1/2" COIL SIZE X1" SETBACK
DSC35152	DS B30 SCREW-ON PLASTIC CONE	1/2" COIL SIZE X1-1/2" SETBACK
DSC35153	DS B30 SCREW-ON PLASTIC CONE	1/2" COIL SIZE X2" SETBACK

## SNAP TIES SHORT END W/ CONE (4-3/4") 120 M

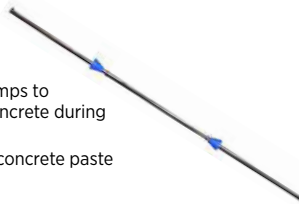
- Used for retaining and standard walls, batter walls, bridges, concrete signs, footings, and more
- Held in place by a snap tie wedge hex head



PRODUCT NO.	DESCRIPTION	SIZE
DSC700087	DS A4H HEX HEAD SNAP TIE	6" WALL X4-3/4" LW W/1X1" CONE
DSC700088	DS A4H HEX HEAD SNAP TIE	8" WALL X4-3/4" LW W/1X1" CONE
DSC700090	DS A4H HEX HEAD SNAP TIE	10" WALL X4-3/4" LW W/1X1" CONE
DSC700091	DS A4H HEX HEAD SNAP TIE	12" WALL X4-3/4" LW W/1X1" CONE
DSC700094	DS A4H HEX HEAD SNAP TIE	18" WALL X4-3/4" LW W/1X1" CONE
DSC700097	DS A4H HEX HEAD SNAP TIE	24" WALL X4-3/4" LW W/1X1" CONE

## SNAP TIES LONG END W/ CONE (8-1/4") 210 M

- Each snap tie is fabricated with flats or crimps to prevent the snap tie from turning in the concrete during breakback operations
- The plastic cone reduces the likelihood of concrete paste seepage and protects the break back



PRODUCT NO.	DESCRIPTION	SIZE
DSC25340	DS A4H HEX HEAD SNAP TIE	6" WALL X4-3/4" TO 8-1/4" LW W/1X1" CONE
DSC25344	DS A4H HEX HEAD SNAP TIE	8" WALL X4-3/4" TO 8-1/4" LW W/1X1" CONE
DSC25348	DS A4H HEX HEAD SNAP TIE	10" WALL X4-3/4" TO 8-1/4" LW W/1X1" CONE
DSC25825	DS A4H HEX HEAD SNAP TIE	12" WALL X4-3/4" TO 8-1/4" LW W/1X1" CONE
DSC25834	DS A4H HEX HEAD SNAP TIE	16" WALL X4-3/4" TO 8-1/4" LW W/1X1" CONE
DSC25836	DS A4H HEX HEAD SNAP TIE	18" WALL X4-3/4" TO 8-1/4" LW W/1X1" CONE

## SNAP TIES W/ WATERSTOP (8-1/4") 210 M

- Rebar locating device protects the break during concrete
- Placement. Designed to accept and lock in place
- 10M, 15m, or 20m rebar into the correct position, preventing any movement during concrete placement



PRODUCT NO.	DESCRIPTION	SIZE
DSCSTH300W	SNAP TIES HEAVY W/1" PLASTIC CONES 8-1/4" ENDS	300MM W/WATERSTOP
DSCSTH400W	SNAP TIES HEAVY W/1" PLASTIC CONES 8-1/4" ENDS	400MM W/WATERSTOP
DSCSTH600W	SNAP TIES HEAVY W/1" PLASTIC CONES 8-1/4" ENDS	600MM W/WATERSTOP

## OMNI WEDGE

- Also known as pressed steel wedge
- For use with standard or heavy duty snap ties
- For long end or short end snap ties, snap tie wedges are required to lock the snap ties in place against the wales



PRODUCT NO.	DESCRIPTION
DSC30328	DS A16 OMNI SNAP TIE WEDGE

## SNAP TIE SHORT END W/ WASHER (4-3/4") 120 M

- The hex head allows short-end snap ties to be broken back with the form work still in place



PRODUCT NO.	DESCRIPTION	SIZE
DSC700099	DS A4H HEX HEAD SNAP TIE	6" WALL X4-3/4" LW PLASTIC WASHER
DSC25406	DS A4H HEX HEAD SNAP TIE	8" WALL X4-3/4" LW PLASTIC WASHER
DSC700100	DS A4H HEX HEAD SNAP TIE	10" WALL X4-3/4" LW PLASTIC WASHER
DSC25414	DS A4H HEX HEAD SNAP TIE	12" WALL X4-3/4" LW PLASTIC WASHER



## SNAP TIES LONG END W/ WASHER (8-1/4") 210 M

- Snap ties can be used with the #3 forming system with 3/4" plywood



PRODUCT NO.	DESCRIPTION	SIZE
DSC25437	DS A4H HEX HEAD SNAP TIE	8" WALL X8-1/4" LW PLASTIC WASHER
DSC24232	DS A4H HEX HEAD SNAP TIE	10" WALL X8-1/4" LW PLASTIC WASHER
DSC24236	DS A4H HEX HEAD SNAP TIE	12" WALL X8-1/4" LW PLASTIC WASHER
DSC24240	DS A4H HEX HEAD SNAP TIE	14" WALL X8-1/4" LW PLASTIC WASHER
DSC24242	DS A4H HEX HEAD SNAP TIE	16" WALL X8-1/4" LW PLASTIC WASHER

## TAPER TIES

- Used to connect gang modular forms and used where specifications require/allow complete removal of a form tie from concrete
- Bare finish
- Taper ties are made to order
- Additional sizes and threads available



PRODUCT NO.	DESCRIPTION	SIZE
DSC60523	DS D9 TAPER TIE	1" TO 3/4" DIA X60"
DSC60522	DS D9 TAPER TIE	1" TO 3/4" DIA X48"
DSC60521	DS D9 TAPER TIE	1" TO 3/4" DIA X42"
DSC60520	DS D9 TAPER TIE	1" TO 3/4" DIA X36"
DSC60512	DS D9 TAPER TIE	1" TO 3/4" DIA X30"

# CONCRETE FORMING ACCESSORIES

## TIE BREAKER

- For breaking and removing the outer end of a snap tie



PRODUCT NO.	DESCRIPTION
CONTACT US	A29 TIE BREAKER ROD

## COIL LOOP INSERT W/WASHER

- Highly efficient for lifting and handling precast concrete elements
- Made of a single u-shaped looped wire strut that is welded to a helix coil with a nailing washer
- Available in 1/2", 3/4" and 1" nominal diameter
- Available in various standard lengths
- Available in plain and electro galvanized



PRODUCT NO.	DESCRIPTION	SIZE
DSC124345	DS B16 STD COIL LOOP INSERT W/WASHER	1X8" BARE
DSC124344	DS B16 STD COIL LOOP INSERT W/WASHER	1X6" BARE
DSC124343	DS B16 STD COIL LOOP INSERT W/WASHER	3/4X6" BARE
DSC124341	DS B16 STD COIL LOOP INSERT W/WASHER	3/4X4" BARE
DSC124340	DS B16 STD COIL LOOP INSERT W/WASHER	1/2X4" BARE
DSC1243??	DS B16 STD COIL LOOP INSERT W/WASHER	1/2X3" BARE

## EURO ROD

- Designed to meet the higher load capacities demanded by european forming standards
- Bare finish



PRODUCT NO.	DESCRIPTION	SIZE
FISTE5011750	EURO/DR TFL ROD HIGH TENSILE	5/8(15MM)X19'-1" BARE
FISTE5011770	EURO/DR TFL ROD HIGH TENSILE	7/8(20MM)X19'-1" BARE

## COIL HEX NUT

- Also known lagnut
- Medium/heavy forming are manufactured from highstrength steel
- Available with right hand or left hand threads
- One b25 heavy coil nut is required for b12 coil rod ultimate load
- Available in bare and galvanized



PRODUCT NO.	DESCRIPTION	SIZE
FISTE5005550	COIL THREAD HEX NUT	1/2" BARE
FISTE5005560	COIL THREAD HEX NUT	3/4" BARE
FISTE5005570	COIL THREAD HEX NUT	1" BARE
FISTE5005580	COIL THREAD HEX NUT	1-1/4 BARE

## SWIVEL LIFTING PLATE

- Manufactured from forged steel and designed for use in single lifting inserts for either face lifting or edge lifting applications
- This swivel lift plate allows bail to rotate in direction of the applied loads



PRODUCT NO.	DESCRIPTION	SIZE
CHAIN0302515	SWIVEL LIFTING PLATE	3/4"
CHAIN0302520	SWIVEL LIFTING PLATE	1"
CHAIN0302525	DOUBLE SWIVEL LFTING PLATE	1"

## COIL INSERTS

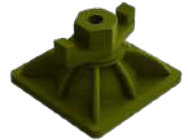
- Highly efficient for lifting and handling precast concrete
- Elements made of a single looped wire strut welded to a helix coil
- Available in 1/2", 3/4" and 1" nominal diameter standard or screw-on coil
- Available in various standard lengths
- Available in plain and electro galvanized



PRODUCT NO.	DESCRIPTION	SIZE
DSC43996	DS B16 STANDARD COIL LOOP INSERT	1/2X4" EG
DSC43995	DS B16 STANDARD COIL LOOP INSERT	1/2X3" EG
DSC124346	DS B16 STANDARD COIL LOOP INSERT	1/2X3" BARE
DSC44104	DS B16 STANDARD COIL LOOP INSERT	1/2X6" EG
DSC44101	DS B16 STANDARD COIL LOOP INSERT	1/2X6" BARE
DSC44098	DS B16 STANDARD COIL LOOP INSERT	3/4X6" EG
DSC44051	DS B16 STANDARD COIL LOOP INSERT	3/4X6" EG
DSC44050	DS B16 STANDARD COIL LOOP INSERT	3/4X4" EG
DSC44022	DS B16 STANDARD COIL LOOP INSERT	3/4X4" BARE
DSC44001	DS B16 STANDARD COIL LOOP INSERT	3/4X9" BARE
DSC44114	DS B16 STANDARD COIL LOOP INSERT	1X8" EG
DSC44111	DS B16 STANDARD COIL LOOP INSERT	1X8" BARE
DSC44110	DS B16 STANDARD COIL LOOP INSERT	1X6" EG
DSC44105	DS B16 STANDARD COIL LOOP INSERT	1X6" BARE

## EURO ROD ACCESSORIES

- Used in industrial formwork systems, lost anchoring solutions, special connections and applications for cast in place and precast



PRODUCT NO.	DESCRIPTION	SIZE
FISTE5015740	EURO/DR THREAD WING NUT	5/8(15MM) GALV
FISTE5015640	EURO/DR THREAD STEEL HEX NUT	5/8(15MM) BARE
FISTE5015540	EURO/DR THREAD CAST HEX NUT	5/8(15MM) BARE
FISTE5015640	EURO/DR THREAD STEEL HEX NUT	5/8(15MM) BARE
FISTE5015690	EURO/DR THREAD HEX COUPLER NUT	5/8(15MM) BARE
FISTE5015700	EURO/DR THREAD HEX COUPLER NUT	7/8(20MM) BARE
FISTE5015840	EURO/DR THREAD SWIVEL WING NUT	5/8(15MM) GALV
FISTE5015850	EURO/DR THREAD SWIVEL WING NUT	7/8(20MM) GALV

## COIL THREAD ADJUSTABLE BOLT/NUT

- Also known as lagstud bolt
- Threaded for the coil of a tyscru or insert
- Available in 1/2", 3/4", 1" and 1-1/4" diameters and lengths as required in 2" (50 mm) increments
- All threaded bolts have a hexagon nut welded to it as an integral head
- Bare finish



PRODUCT NO.	DESCRIPTION	SIZE
FISTE5001520	COIL THREAD ADJUSTABLE BOLT	1/2X12 BARE
FISTE5001560	COIL THREAD ADJUSTABLE BOLT W/NUT	1/2X18 BARE
FISTE5001620	COIL THREAD ADJUSTABLE BOLT W/NUT	1/2X24 BARE
FISTE5001720	COIL THREAD ADJUSTABLE BOLT W/NUT	3/4X18 BARE
FISTE5001820	COIL THREAD ADJUSTABLE BOLT W/NUT	3/4X24 BARE

## COIL CAST WING NUT

- Coil cast wing nut



PRODUCT NO.	DESCRIPTION	SIZE
FISTE5005750	COIL THREAD CAST WING NUT	1/2" BARE
FISTE5005760	COIL THREAD CAST WING NUT	3/4" BARE
FISTE5005770	COIL THREAD CAST WING NUT	1" BARE

# CONCRETE FORMING ACCESSORIES

## FORM STAKES

- Holds concrete forms in place, designed with holes to allow for quick nailing
- The stake puller is designed for pulling disposable stakes, but also works for removing rebar stakes. Stake puller operates by laying the tool flat on the ground, engage the heavy hook to the cable end or chain, and lift up



PRODUCT NO.	DESCRIPTION	SIZE
DSC145414	DS G27 STEEL ROUND STAKE W/NAIL HOLES	18MMX18"
DSC145415	DS G27 STEEL ROUND STAKE W/NAIL HOLES	18MMX24"
DSC145976	DS G27 STEEL ROUND STAKE W/NAIL HOLES	18MMX30"
DCS49734KGL	G26- STAKE-OUT PULLER USA	---

## CHAMFER

- Flexible PVC strips used for forming rounded or angled edges in columns, walls, or other concrete elements
- Reusable, can prevent leakage, and ideal for radius applications in round columns



PRODUCT NO.	DESCRIPTION
CONTACT US	3/4" CHAMFER WITHOUT TAIL 200FT
CONTACT US	3/4" CHAMFER WITH TAIL 200FT

## WHITE LITHIUM GREASE

- Used to grease threaded rod while placed in concrete
- Allows for the coil rod to not have adhesion and does not stain concrete for easier removal



PRODUCT NO.	DESCRIPTION	VOLUME
CHEM10600517	ARCAN 1 WHITE LITHIUM GREASE	5 GAL PAIL

## COIL ROD

- Also known as lagstud
- Used for a variety of concrete forming applications including form ties, inserts and coil tie combinations
- Commonly used with job-built (plywood and 2x4) forms and handset modular forms



PRODUCT NO.	DESCRIPTION	SIZE
FISTE0728146	COIL TFL ROD HIGH TENSILE	1/2"X144 BARE
FISTE0728196	COIL TFL ROD HIGH TENSILE	3/4"X144 BARE
FISTE0728246	COIL TFL ROD HIGH TENSILE	1"X144 BARE

## SQUARE WASHERS

- Designed to work with the TYSCRU system and other heavy duty rod forming systems.
- Wider and thicker and provides larger bearing surface
- Available in plain and electro galvanized



PRODUCT NO.	DESCRIPTION	BOLT SIZE	WASHER SIZE
FISTE5007435H	WITH NAIL HOLES	1/2"	3-3/4X3-3/4X1/4"
FISTE5007550H	WITH NAIL HOLES	3/4"	5X5X3/8"
FISTE5007560H	WITH NAIL HOLES	1"	5X5X1/2"
FISTE5007440	WITHOUT NAIL HOLES	1/2"	4X4X1/4"
FISTE5007550	WITHOUT NAIL HOLES	3/4"	5X5X3/8"
FISTE5007560	WITHOUT NAIL HOLES	1"	5X5X1/2"

## STEEL STRAPPING

- Can be used in loops attached to holding Joining methods. After the strap is tensioned, the strap is often sealed to itself
- Seals come in various shapes depending on the application; some can be put on after the strap
- is tensioned, while others must be installed before tensioning



PRODUCT NO.	DESCRIPTION
BKIT10000060	STARTER KIT 3/4" STEEL BANDING

## COIL TIE STD 2-STRUT

- Also known as Tyscru, designed with longer coils that extend beyond the end of the struts
- The coil ties can be used as a combination tie and form spreader
- Plastic cones screw onto the projections to provide a positive setback and act as a fixed internal form spreader
- To determine proper screw-on coil tie length, subtract the required total setback (both sides) from the wall thickness
- Safe working load provides a factor of safety of approximately 2 to 1"
- Custom sizes available



PRODUCT NO.	DESCRIPTION	SIZE
DSC40986	DS BIB3 SCREW-ON COIL TIE 4500# STD 2-STRUT	1/2X6"
DSC40987	DS BIB3 SCREW-ON COIL TIE 4500# STD 2-STRUT	1/2X4"
DSC40988	DS BIB3 SCREW-ON COIL TIE 4500# STD 2-STRUT	1/2X8"
DSC40990	DS BIB3 SCREW-ON COIL TIE 4500# STD 2-STRUT	1/2X10"
DSC40992	DS BIB3 SCREW-ON COIL TIE 4500# STD 2-STRUT	1/2X12"
DSC40996	DS BIB3 SCREW-ON COIL TIE 4500# STD 2-STRUT	1/2X16"
DSC41037	BIB3 CFCT 6750# STRUT (18")	1/2X450MM
DSC41060	DS BIB3 SCREW-ON COIL TIE 4500# STD 2-STRUT	1/2"X26"

# FOLLOW US!



# BRAFASCO

A WHITE CAP COMPANY

# CONCRETE FORMING ACCESSORIES



## COIL TIE 4 - STRUT

- Also known as Tyscru Four Strut
- Similar in form and use to the Coil Tie - Two Strut, but has two additional struts to develop higher load capacities.
- Available in 1" diameter standard, 1-1/4" standard and 1-1/4" heavy configurations
- Custom sizes available



PRODUCT NO.	DESCRIPTION	SIZE
DSC41088	DS B2B3 SCREW-ON COIL TIE 18000# HVY 4-STRUT	3/4X8"
DSC41089	DS B2B3 SCREW-ON COIL TIE 18000# HVY 4-STRUT	3/4X6"
DSC41091	DS B2B3 SCREW-ON COIL TIE 18000# HVY 4-STRUT	3/4X10"
DSC41097	DS B2B3 SCREW-ON COIL TIE 18000# HVY 4-STRUT	3/4X6"
DSC41136	DS B2B3 SCREW-ON COIL TIE 18000# STD 4-STRUT	1X8"
DSC41137	DS B2B3 SCREW-ON COIL TIE 18000# STD 4-STRUT	1X6"
DSC41138	DS B2B3 SCREW-ON COIL TIE 18000# STD 4-STRUT	1X10"
DSC41140	DS B2B3 SCREW-ON COIL TIE 18000# STD 4-STRUT	1X12"

## PLASTIC SHIM

- Engineered multipolymer plastic specifically formulated for the construction industry
- This material provides an optimum combination of physical properties for a shim in applications where high compressive strength and load bearing are important



PRODUCT NO.	DESCRIPTION	SIZE
CONTACT US	DS P80 SHIM STRIP	2X4X1/16" PLASTIC
CONTACT US	DS P80 SHIM STRIP	2X4X1/8" PLASTIC
CONTACT US	DS P80 SHIM STRIP	2X4X1/4" PLASTIC

## CONE WRENCH

- Cone Removal Wrench is fabricated from high strength steel
- Cone Removal Wrench is designed to remove the plastic cones from Screw-On Coil Ties
- Available for 1/2", 3/4", 1" and 1-1/4" diameter cones



PRODUCT NO.	DESCRIPTION	SIZE
DSC66705	DS B15 PLASTIC CONE REMOVAL WRENCH	1/2"
DSC66706	CONE WRENCH	3/4"

## ELEPHANT TRUNK

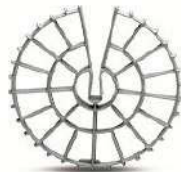
- Flexible PVC chute used to confine and direct concrete during placement in forms
- Hoppers, Collars, and Clamps are convenient accessories for safely and efficiently funnelling concrete into the Elephant Trunk



PRODUCT NO.	DESCRIPTION	SIZE
CONTACT US	8" ELEPHANT TRUNK	50FT/ROLL

## SPACE WHEEL

- Also known as rebar space wheels
- Designed to properly position a reinforcing rebar steel cage in a drilled shaft with a concrete cover requirement, but also works in applications where concrete cover must be maintained



PRODUCT NO.	DESCRIPTION	SIZE
DSC121323	DS PSW AZTEC PLASTIC SPACE WHEEL	1-1/2"
DSC121325	DS PSW AZTEC SPACE WHEEL	2" #3 (10MM)-#6 (19MM)
DSC121328	DS PSW AZTEC PLASTIC SPACE WHEEL	3"

## FORM PLY

- An ideal plywood material for concrete forming by producing smooth surfaces and can be used repeatedly
- Excellent stiffness minimizes deflection during pouring



PRODUCT NO.	DESCRIPTION	SIZE
DSCF86652	HDO FORM PLY	1/2 X 4' X 8'

## DOWEL CAP

- Allows the movement of dowels in to expand and contract at expansion joints or control joints
- Molded from heavy duty plastic



PRODUCT NO.	DESCRIPTION	SIZE
CONTACT US	DOWEL CAP	1"
CONTACT US	DOWEL CAP	1-1/4"

## BRIDGE BRACKET

- Adjustable bracket used for bridge fascia beam falsework, water treatment plant trough walls, or perimeter work platforms



PRODUCT NO.	DESCRIPTION
DSC60250	C49 BRIDGE OVERHANG BRACKET
DSC60	C60 TYPE 1-A PRES-STEEL HANGER
DSC60255	C49 BRIDGE OVERHANG BRACKET JR
DSC43400	C25 ADJUSTABLE HALF HANGER - 90 DEGREE END, TYPE 1
DSC43410	C25 ADJUSTABLE HALF HANGER - 90 DEGREE END, 1" HAUNCH TYPE 2
DSC43428	C25 ADJUSTABLE HALF HANGER - 45 DEGREE, TYPE 1A
DSC60320	C52 BRIDGE OVERHANG GUARD RAIL RECEPTACLE

# CHEMICALS & CURING ACCESSORIES

## CURING & SEALING COMPOUND

- Suitable for interior and exterior usage
- Provides low sheen and glossy finish when desired
- Ensures high curing efficiency allowing concrete to attain its full strength potential
- Reduces surface absorption and dusting of concrete for easier cleaning and maintenance
- Retains moisture in concrete to minimize shrinkage cracking
- Water-based, water-borne and exempt-solvent materials available



PRODUCT NO.	DESCRIPTION	VOLUME
WRM3112200500	ST 1220 MTO WATER-BASED CONCRETE CURING COMPOUND	18.9L PAIL
WRM3112205500	ST 1220 MTO WATER-BASED CONCRETE CURING COMPOUND	205L DRUM
WRM3112207500	ST 1220 WHITE PIGMENTED CURING COMPOUND	1040L TOTE
EUC359VV95	DIAMOND CLEAR VOX CURING/SEALING COMPOUND	1 GAL
EUC359VV05	DIAMOND CLEAR VOX CURING/SEALING COMPOUND	5 GAL PAIL
EUC359VV55	DIAMOND CLEAR VOX CURING/SEALING COMPOUND	55 GAL DRUM
BSF50123187	BASF MASTERKURE CC300XS CURE/SEAL COMPOUND	5GAL PAIL
BSF50123108	BASF MASTERKURE CC250XS CURE/SEAL COMPOUND	5GAL PAIL
BSF51679069	BASF MASTERKURE CC200WB CURE/SEAL COMPOUND	5GAL PAIL
BSF51678857	BASF MASTERKURE CC180WB CURE/SEAL COMPOUND	5GAL PAIL
BSF51679175	BASF MASTERKURE CC160WB CURE/SEAL COMPOUND	5GAL PAIL
BSF51678380	BASF MASTERKURE CC135WB CURE/SEAL COMPOUND	5GAL PAIL

## FORM RELEASES

- Easy separation of concrete from the forms or form liners
- Ensures worry-free removal of formwork without surface damage
- Enhances the appearance of the precast, prestressed, and cast-in-place concrete
- Minimizes inconsistencies such as bug holes on the concrete surface



PRODUCT NO.	DESCRIPTION	VOLUME
DSC69201	DS CLEAN STRIP JIA OIL BASED FORM RELEASE	5 GAL
DSC69200	DS CLEAN STRIP JIA OIL BASED FORM RELEASE	55 GAL
DSC144014	DS CLEAN STRIP JIA WINTER OIL BASED FORM RELEASE	5 GAL
DSC144015	DS CLEAN STRIP JIA WINTER OIL BASED FORM RELEASE	55 GAL
DSC309373	DS CLEAN STRIP JIEF WATER BASED FORM RELEASE	55 GAL
DSC309374	DS CLEAN STRIP JIEF WATER BASED FORM RELEASE	5 GAL
WRM3910005	ST DUOGARD MULTI-REACTIVE FORM RELEASE	18.9L PAIL
WRM3910055	ST DUOGARD MULTI-REACTIVE FORM RELEASE	208.2L DRUM
WRM3918005	ST ECO-COAT OIL-BASED FORM RELEASE	18.9L PAIL
WRM3918055	ST ECO-COAT OIL-BASED FORM RELEASE	205L DRUM

## LIQUID HARDENERS AND DENSIFIERS

- Seals, densifies and dustproofs concrete in one operation
- Water-based, low VOCs
- Treated concrete is more dense and durable
- Permanent treatment that never peels off
- Makes concrete easier to maintain



PRODUCT NO.	DESCRIPTION	VOLUME
BSF51679281	BASF MASTERKURE HD300WB HARDEN/SEAL COMPOUND	5GAL PAIL
BSF50380378	BASF MASTERKURE HD300WB HARDEN/SEAL COMPOUND	55GAL DRUM
BSF57152856	BASF MASTERKURE HD200WB HARDEN/SEAL COMPOUND	5GAL PAIL
BSF57152803	BASF MASTERKURE HD200WB HARDEN/SEAL COMPOUND	55GAL DRUM

## SURFACE RETARDERS

- Slows down concrete setting reaction
- Removeable with a water flush or broom
- Reduces cost of mechanically preparing surfaces for waterproofing, plaster application or grouting applications
- Available for various etching depths



PRODUCT NO.	DESCRIPTION	VOLUME
DSC145428	DS TOP-CAST TOP-SURFACE RETARDER 250 ORANGE	5 GAL
DSC145523	DS TOP-CAST TOP-SURFACE RETARDER 75 BLUE	5 GAL
DSC145524	DS TOP-CAST TOP-SURFACE RETARDER 100 GRAY	5 GAL
DSC145525	DS TOP-CAST TOP-SURFACE RETARDER 125 PINK	5 GAL
DSC309055	DS TOP-CAST TOP-SURFACE RETARDER 03 VIOLET	5 GAL
DSC309056	DS TOP-CAST TOP-SURFACE RETARDER 05 LIGHT BLUE	5 GAL
DSC700097	DS TOP-CAST TOP-SURFACE RETARDER 50 CANARY GREEN	5 GAL

## EVAPORATION RETARDANT

- An economical, high quality, water-based compound
- Specifically designed to form a thin monomolecular film to reduce rapid moisture loss from the concrete surfaces prior to curing
- A significant aid in producing high-quality concrete flatwork



PRODUCT NO.	DESCRIPTION	VOLUME
BSF57287423	BASF MASTERKURE ER50 EVAPORATION REDUCER	1GAL JUG
BSF57291186	BASF MASTERKURE ER50 EVAPORATION REDUCER	5GAL PAIL

## WET CURING BLANKETS

- Holds moisture in concrete to prevent fast evaporation
- Can be single-used or reusable
- Insulated materials available to control solar heat gains
- Combined solutions of natural fabrics and polyethylene materials



PRODUCT NO.	DESCRIPTION	SIZE
RASSOG200LF	RELIABLECURE SOG SINGLE-USE CURING BLANKET	8X200' ROLL
RASVAB150LF	RELIABLECURE VAB SINGLE-USE CURING BLANKET	8X150' ROLL

# CHEMICALS & CURING ACCESSORIES

## CONCRETE CLEANERS

- Designed to clean or remove contamination from concrete surfaces

PRODUCT NO.	DESCRIPTION	VOLUME
DSC69297	MURIATIC ACID	4L
CHEMIO600875	XYLENE	3.78L CAN
CHEMIO600880	XYLENE	18.9L PAIL



## BURLAPS

- Natural fabric
- Various thicknesses and grades allows for various performance
- Can be used with polyethylene sheet for better performance
- Retains moisture in concrete for proper saturation



PRODUCT NO.	DESCRIPTION	SIZE
QPLBB48	QUEST BURLAP CURING BLANKET	4X300' ROLL
QPLBB60	QUEST BURLAP CONCRETE CURING BLANKET 50Z	60"X100YD ROLL
QPLBB7210	GRADE 4 BURLAP FOR MTO PROJECTS	---

## POLYETHYLENE ROLLS

- A construction and agricultural all purpose poly roll. Plastic sheeting that serves as a vapor barrier and offers protection from water and dust
- Multi-purpose coverings. White finish provides additional barrier against solar heat gains



PRODUCT NO.	DESCRIPTION	SIZE
POP010701	POLY FILM HEAVY 6MIL WHITE	10' X 100' ROLL
POP010801	POLY FILM HEAVY 6MIL WHITE	20 X 100' ROLL

## BURLAP AND POLY

- Reusable curing blanket that provides curing temperature control
- Can be used to protect concrete or build temporary structures



PRODUCT NO.	DESCRIPTION	SIZE
ENSPB10100	EAGLE POLY BURLAP CURING BLANKET TAN	10X100'
MWCCURELAP10X100	CURELAP REUSABLE CURING BLANKET	10X100'
MWCCURELAP5X100	CURELAP REUSABLE CURING BLANKET	5X100'
REF540015	TRANSGUARD 4000 REUSABLE CURING BLANKET	10X150'
REF540016	TRANSGUARD 4000 REUSABLE CURING BLANKET	20X100'

## INSULATED CURING BLANKET

- Reusable curing blanket that provides curing temperature control
- Can be used to protect concrete or build temporary structures



PRODUCT NO.	DESCRIPTION	SIZE
INDUS8106836	CONCRETE CURING POLY INSULATED BLANKET	4MM 6X24' ORANGE
INDUS8106838	CONCRETE CURING POLY INSULATED BLANKET	4MM 8X24' ORANGE
INDUS8106840	CONCRETE CURING POLY INSULATED BLANKET	3MM 12X20' ORANGE
INDUS8106842	CONCRETE CURING POLY INSULATED BLANKET	4MM 12X24' ORANGE



# WATERPROOFING

## POST APPLIED WATERPROOFING MEMBRANE - ROLLER OR BRUSH APPLIED

- Waterproof – very low vapor permeability (perm rating)
- Superior elongation – bridges minor cracks and will not become brittle with age
- Fully bonded – water will not run beneath the membrane



PRODUCT NO.	DESCRIPTION	VOLUME
AVM490AP5002G	AVM PRIMER 500	2 GAL BUCKET
AVM490AP5005G	AVM PRIMER 500	5 GAL BUCKET
AVM490AM5005	AUSSIE MEMBRANE 500	5 GAL BUCKET
WRM6511005	MEL-ROL LM LIQUID WATERPROOFING MEMBRANE	18.9L PAIL
WRM6511055	MEL-ROL LM LIQUID WATERPROOFING MEMBRANE POLY	208L DRUM
WRM6516005	MEL-ROL LM ALL-SEASON LIQUID MEMBRANE POLY	18.9L PAIL

## POST APPLIED WATERPROOFING MEMBRANE - PEEL AND STICK

- Provides cost-effective, flexible, versatile, dependable, positive waterproofing protection against damaging moisture migration and the infiltration of free water
- Offers a quick and easy-to-apply system for maximum productivity



PRODUCT NO.	DESCRIPTION	SIZE/VOLUME
AVM501ADH5	ADHESIVE 501 FOR AUSSIE MATE 580-AL & 582-AL	---
AVM490AM580R	AUSSIE MATE 580-AL BITUMINOUS SHEET MEMBRANE	3.28'X65.6' ROLL
WRM5110062	MEL-ROL WATERPROOFING MEMBRANE 60MIL	38.5"X62.5" ROLL
WRM5110212	MEL-ROL WATERPROOFING MEMBRANE 60MIL	12X62.5" ROLL
WRM5110218	MEL-ROL WATERPROOFING MEMBRANE 60MIL	18"X62.5" ROLL
WRM5110362	MEL-ROL LOW TEMP WATERPROOFING MEMBRANE	38.5X62.5" ROLL
WRM5110662	MEL-ROL XLT WATERPROOFING MEMBRANE	38.5X62.5" ROLL
WRM5145001	MEL-PRIME W/B WATER-BASED PRIMER	3.78L JUG
WRM5145005	MEL-PRIME W/B WATER-BASED PRIMER	18.9L PAIL
WRM5160001	MEL-PRIME SOLVENT-BASED PRIMER	3.78L JUG
WRM5160005	MEL-PRIME SOLVENT-BASED PRIMER	18.9L PAIL

## BLIND SIDE WATERPROOFING MEMBRANE

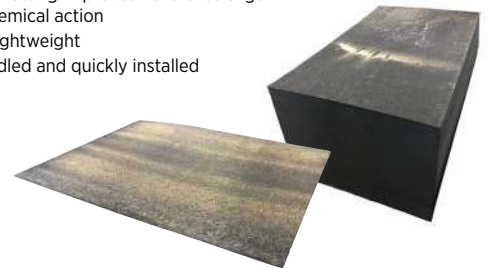
- Provides a waterproof seal between the membrane and poured concrete wall.
- Helps prevent moisture migration into the structure.



PRODUCT NO.	DESCRIPTION	SIZE
AVM490AS5501M	AUSSIE SKIN 550 MEMBRANE	1 METER (3.28' X 65.6')
AVM490AS5502M	AUSSIE SKIN 550 MEMBRANE	2 METER (6.56' X 65.6')
AVM490ASDS	AUSSIE SKIN 550 DETAIL STRIP (6 ROLLS/BOX)	7.75" X 65.6'
AVM490ASFT	AUSSIE SKIN FABRIC TAPE (36 ROLLS/ BOX)	4" X 49'
AVM490ASST	AUSSIE SKIN SANDED TAPE (15 ROLLS PER BOX)	4" X 65.6'
AVM490ASDST	AUSSIE SKIN DOUBLE SIDED TAPE (32 PER BOX)	4" X 33'
AVM490GPL16	GPL-16, GREEN POLYOLIFIN LINER, 16 MILS	12.75' X 150'

## PROTECTION BOARD

- Full width fiberglass matting improves flexural strength and are highly resistant to chemical action
- Tough, durable and lightweight
- Panels are easily handled and quickly installed



PRODUCT NO.	DESCRIPTION	SIZE
WRM5741360050	VIBRAFLEX MTO WATERPROOFING PROTECTION BOARD	3X5' SHEET
WRM5741480050	VIBRAFLEX MTO WATERPROOFING PROTECTION BOARD	4X5' SHEET
WRM5742360050	PROTECTION COURSE WATERPROOFING CORE	3X5'X1/8" SHEET
WRM5742480050	PROTECTION COURSE WATERPROOFING CORE	4X5'X1/8" SHEET
WRM5743360050	PROTECTION COURSE WATERPROOFING CORE	3X5'X3/16" SHEET
WRM5744360050	PROTECTION COURSE WATERPROOFING CORE	3X5'X1/4" SHEET
WRM5744480050	PROTECTION COURSE WATERPROOFING CORE	4X5'X1/4" SHEET
WRM5745360050	PROTECTION COURSE WATERPROOFING CORE	3X5'X3/8" SHEET
WRM5746360050	PROTECTION COURSE WATERPROOFING CORE	3X5'X1/2" SHEET

## DRAINAGE BOARD

- Superior compressive strength and high water flow rate
- Non-woven, needle-punched geotextile prevents the passage of soil particles but allows water to pass freely, ensuring that the drainage core will not get clogged



PRODUCT NO.	DESCRIPTION	SIZE
DOS22600026	DELTA-DRAIN 6200 HI-X DRAIN BOARD POLYMERIC	4X50' ROLL
DOS22600017	DELTA-DRAIN 6000 HI-X DRAIN BOARD POLY	6X50' ROLL

## MASTERSEAL® TRAFFIC 2500 DECK COATING SYSTEM

- A high-solids (99%) waterproof polyurethane traffic deck membrane
- MasterSeal Traffic 2500 is a two-component system for fast cure even in cooler climates
- Sand is broadcast into the coating to give it excellent durability and slip resistance
- Very low odor
- Available in other colours



PRODUCT NO.	DESCRIPTION	VOLUME
BSF50545694	BASF MASTERSEAL P255 ADHESIVE PRIMER PU	3.4 GAL KIT
BSF56431261	BASF MASTERSEAL M265 BASE COAT PU	4.66 GAL KIT
BSF50525870	BASF MASTERSEAL M270NP PRIMERLESS BASE COAT PU	4.66GAL KIT
BSF50389167	BASF MASTERSEAL TC275 TOPCOAT PU CHARCOAL	4.78GAL KIT
BSF50412029	BASF MASTERSEAL TC 275 TOP COAT PU GREY	4.78GAL KIT

## MASTERSEAL TRAFFIC 1500 WATERPROOFING MEMBRANE SYSTEM

- A liquid-applied, high-performance, waterproof membrane with an integral aggregate surface
- Forms a continuous elastomeric, waterproof, skid-resistant membrane for use on parking decks, stadiums, balconies and other surfaces exposed to vehicular and pedestrian traffic
- Available in other colours



PRODUCT NO.	DESCRIPTION	VOLUME
BSF55510704	BASF MASTERSEAL M200 SLV MEMBRANE	5GAL PAIL
BSF50380785	BASF MASTERSEAL TC225HT MEMBRANE CHARCOAL GREY	5GAL PAIL
BSF56413400	BASF MASTERSEAL TC225HT MEMBRANE GREY	5GAL PAIL

## BENTONITE - WATERSTOP

- An active waterstop which reacts with water to seal construction joints within concrete. The seal resists hydrostatic pressure, stopping the passage of water through the joint



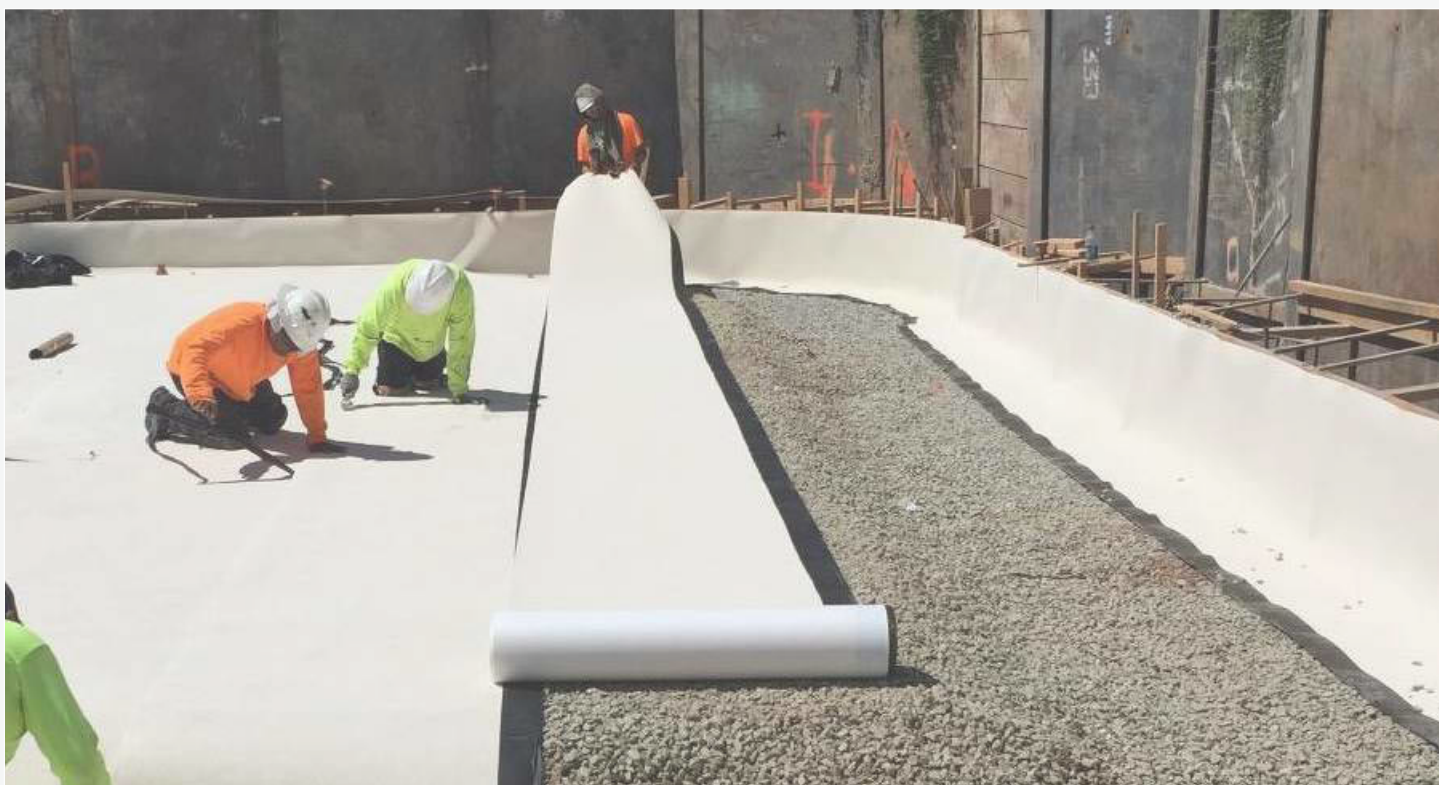
PRODUCT NO.	DESCRIPTION
AVM490ASR940	AUSSIE SWELL - 75% BENTONITE/BUTYLE RUBBER WATERSTOP (6 COILS PER BOX)

## MARINE GRADE SEALANT

- A extra heavy duty, easy to install, Marine-Grade moisture cure polyether Sealant / Adhesive formulated for applications above the water line or after curing below the water line and in areas where solvent based materials are not tolerated



PRODUCT NO.	DESCRIPTION
AVM490ASEALMS	AUSSIE SEAL M POLYETHER SEALANT/ADHESIVE - 20 OZ SAUSAGE (12 PER CASE)



# AIR & VAPOUR BARRIER & INSULATION

## WALL AIR AND VAPOR BARRIER

- An air, moisture and water impermeable membrane with an aggressive high-tack acrylic pressure sensitive adhesive that does not require the use of a primer on most construction surfaces



PRODUCT NO.	DESCRIPTION	SIZE
3MC301512X75	3M AIR AND VAPOUR BARRIER	12" (75 SQ.FT)
3MC301518X75	3M AIR AND VAPOUR BARRIER	18" (112.5 SQ.FT)
3MC3015238X75	3M AIR AND VAPOUR BARRIER	2-3/8" (14.8 SQ.FT)
3MC301526X75	3M AIR AND VAPOUR BARRIER	26" (162.5 SQ.FT)
3MC301536X75	3M AIR AND VAPOUR BARRIER	36" (225 SQ.FT)
3MC301548X75	3M AIR AND VAPOUR BARRIER	48" (300 SQ.FT)
3MC30154X75	3M AIR AND VAPOUR BARRIER	4"X75'
3MC30156X75	3M AIR AND VAPOUR BARRIER	6" (37.5 SQ.FT)
3MC30159X75	3M AIR AND VAPOUR BARRIER	9"X75' (56.25 SQ.FT)

## THROUGH WALL FLASHING

- Specially designed for use as a through-wall flashing and damp proof course
- Exceptional puncture and abrasion resistance
- Can be applied in temperatures as low as -18°C and as warm as 66°C as a through-wall flashing and damp-proof course



PRODUCT NO.	DESCRIPTION	SIZE
3MC3015TWF12X75	3M 3015TWF AIR VAPOR TAPE	12"X75' (4=1)
3MC3015TWF16X75	3M 3015TWF AIR VAPOR TAPE	16"X75'
3MC3015TWF18X75	3M 3015TWF AIR VAPOR TAPE	18"X75'
3MC3015TWF4X75	3M 3015TWF AIR VAPOR TAPE	4"X75'
3MC3015TWF6X75	3M 3015TWF AIR VAPOR TAPE	6"X75'
3MC3015TWF9X75	3M 3015TWF AIR VAPOR TAPE	9"X75'

## AIR BARRIER

- High performance 3M™ acrylic adhesive adheres on contact to most exterior sheathing, concrete, masonry, wood and more



PRODUCT NO.	DESCRIPTION	SIZE
3MC3015VP15X75	3015VP AIR BARRIER	15"X75' 1/CV
3MC3015VP30X75	3M 3015VP AIR BARRIER	30"X75' (187.5 SQ.FT)

## INSULATION FASTENERS

- Install rigid insulation to concrete in seconds
- Fastener thermal efficiency 99.5%
- No licensing required to operate tool



PRODUCT NO.	DESCRIPTION	SIZE
ITWIG625	INSULATION FASTENER W/FUEL 500/PK	1"
ITWIG638	INSULATION FASTENER W/FUEL 500/PK	1-1/2"
ITWIG650	INSULATION FASTENER W/FUEL 500/PK	2"
ITWIG663	INSULATION FASTENER W/FUEL 500/PK	2-1/2"
ITWIG675	INSULATION FASTENER W/FUEL 500/PK	3"
ITWIG6100	INSULATION FASTENER W/FUEL 500/PK	4"
ITWIG6125	INSULATION FASTENER W/FUEL 500/PK	5"
ITWIG6150	INSULATION FASTENER W/FUEL 400/PK	6"
ITWT31GT6	ITW INSULATION GAS TOOL (6" CAPACITY)	---

**ASK US FOR :  
SAFETY TRAINING &  
CERTIFICATION  
FALL PROTECTION  
PPE & SAFETY SUPPLIES**



## UNDER SLAB VAPOR BARRIER

- Helps reduce the penetration of moisture and water vapor through the slab into the structure
- Available in 10 mil and 15 mil thicknesses, in 200' (61 m) long rolls



PRODUCT NO.	DESCRIPTION	SIZE
WRM5242150	PERMINATOR UNDERSLAB VAPOR BARRIER 10MIL	15X200' ROLL
WRM5243120	PERMINATOR UNDERSLAB VAPOR BARRIER 15MIL	12X200' ROLL
WRM6045004	PERMINATOR VAPOR BARRIER TAPE	4"X180' ROLL

## UNDER SLAB GAS VAPOR BARRIER

- Designed to provide superior resistance to gas and moisture transmission
- Highly resilient underslab gas/vapor barrier to restrict naturally occurring gases such as radon, methane, gasoline, solvents, oils, and hydrocarbons from migrating through the ground and into the concrete slab



PRODUCT NO.	DESCRIPTION	SIZE
WRM5244100	PERMINATOR EVOH UNDERSLAB GAS VAPOR BARRIER	10X150' ROLL
WRM6045302	PERMINATOR EVOH DOUBLE-SIDED BUTYL TAPE	2"X50' ROLL
WRM6045504	PERMINATOR EVOH GAS BARRIER TAPE	4"X160' ROLL

## XPS WALL INSULATION

- 20PSI density rigid foam insulation, ideal for above grade exterior wall and inside below grade foundation wall



PRODUCT NO.	DESCRIPTION	SIZE
OWC270166	FOAMULAR C-200 RIGID INSULATION BUTT EDGE 12/PK	2X24X96"
OWC270168	FOAMULAR C-200 RIGID INSULATION SHIP LAP 12/PK	2X24X96"
OWC270172	FOAMULAR C-200 RIGID INSULATION BUTT EDGE 8/PK	3X24X96"

# AIR & VAPOUR BARRIER & INSULATION

## XPS WALL AND SLAB INSULATION

- 30PSI density rigid foam insulation, ideal for exterior foundation wall and under foundation slabs



PRODUCT NO.	DESCRIPTION	SIZE
OWC270273	FOAMULAR C-300 RIGID INSULATION BUTT EDGE 24/PK	1X24X96"
OWC270285	FOAMULAR C-300 RIGID INSULATION BUTT EDGE 16/PK	1.5X24X96"
OWC270279	FOAMULAR C-300 RIGID INSULATION BUTT EDGE 12/PK	2X24X96"
OWC270277	FOAMULAR C-300 RIGID INSULATION SHIP LAP 12/PK	2X24X96"
OWC270302	FOAMULAR C-300 RIGID INSULATION BUTT EDGE 8/PK	3X24X96"
OWC270205	FOAMULAR C-300 RIGID INSULATION BUTT EDGE 6/PK	4X24X96"

## MINERAL WOOL INSULATION

- Thermafiber mineral wool resists fire and temperatures in excess of 2,000° F while also providing sound control and energy conservation
- Contains a minimum of 70% recycled content, is non-combustible, inorganic and mold-resistant



PRODUCT NO.	DESCRIPTION
SPECIAL ORDER	OWENS CORNING THERMAFIBER

## XPS SLAB INSULATION - HIGH DENSITY

- Available in 40, 60, 100 PSI high density foam insulation, ideal for commercial floor/foundation slabs, live loads requiring high compressive strength, and temperature control



PRODUCT NO.	DESCRIPTION	SIZE
OWC270804	FOAMULAR 400 INSULATION BOARD XPS R5 B.E. 24/PK	1X24X96"
OWC288314	FOAMULAR 400 INSULATION BOARD XPS R5 B.E. 12/PK	2X24X96"
OWC288324	FOAMULAR 400 INSULATION BOARD XPS R5 B.E. 8/PK	3X24X96"
OWC271014	FOAMULAR 600 INSULATION BOARD XPS R5 B.E. 12/PK	2X24X96"
OWC537529	FOAMULAR 600 INSULATION BOARD XPS R5 B.E. 8/PK	3X24X96"
OWC886069	FOAMULAR 1000 INSULATION BOARD XPS R5 B.E. 12/PK	2X24X96"

## EPS RIGID FOAM INSULATION

- Used in the construction of buildings to insulate roofs, walls, floors or foundations. It is also used as the insulation component in energy-efficient building systems.
- EPS (Expanded Polystyrene) is a rigid closed cell foam plastic, inert to a wide range of chemicals.
- Contains no food value and will not support the growth of insects, parasites or animal and plant life



PRODUCT NO.	DESCRIPTION
SPECIAL ORDER	PLASTIFAB



# EXPANSION JOINTS & TACTILE

## ASPHALT EXPANSION JOINT - PLANK

- Ideal use for the majority of expansion/contraction joint requirements
- Non-extruding and versatile: offers a minimum 70% recovery after compression



PRODUCT NO.	DESCRIPTION	SIZE
WRM1153040100	SEALTIGHT FIBRE EXPANSION JOINT FILLER 10/PK	1/2X4"X10'
WRM1153050100	SEALTIGHT FIBRE EXPANSION JOINT FILLER 10/PK	1/2X5"X10'
WRM1153060100	SEALTIGHT FIBRE EXPANSION JOINT FILLER 10/PK	1/2X6"X10'
WRM1153080100	SEALTIGHT FIBRE EXPANSION JOINT FILLER 10/PK	1/2X8"X10'

## FOAM EXPANSION JOINT PLANK CUTTER

- An innovative scoring tool that enables installers to create a void when sealant is required, eliminating the need for a separate void cap system



PRODUCT NO.	DESCRIPTION	SIZE
NOMNFC050	NOMAFLEX EXPANSION JOINT CUTTER	1/2"
NOMNFC075	NOMAFLEX EXPANSION JOINT CUTTER	3/4"
NOMNFC100	NOMAFLEX EXPANSION JOINT CUTTER	1"

## ASPHALT EXPANSION JOINT - SHEET

- Ideal application for the majority of expansion/contraction joint requirements



PRODUCT NO.	DESCRIPTION	SIZE
WRM1103480100	SEALTIGHT FIBRE EXPANSION JOINT FILLER	1/2X48"X10' SHEET
WRM1105480100	SEALTIGHT FIBRE EXPANSION JOINT FILLER	3/4X48"X10' SHEET

## FOAM EXPANSION JOINT - PLANK

- Can be stored outside and will not absorb water, break, flake or leach
- Flexible yet rigid enough to be passed across a wet pour and be used as a form



PRODUCT NO.	DESCRIPTION	SIZE
NOMREJ038300010	NOMAFLEX FOAM EXPANSION JOINT FILLER	3/8X3"X10' PLANK
NOMREJ050350010	NOMAFLEX FOAM EXPANSION JOINT FILLER	1/2X3-1/2"X10' PLANK
NOMREJ050400010	NOMAFLEX FOAM EXPANSION JOINT FILLER	1/2X4"X10' PLANK
NOMREJ050500010	NOMAFLEX FOAM EXPANSION JOINT FILLER	1/2X5"X10' PLANK
NOMREJ050600010	NOMAFLEX FOAM EXPANSION JOINT FILLER	1/2X6"X10' PLANK
NOMREJ050700010	NOMAFLEX FOAM EXPANSION JOINT FILLER	1/2X7"X10' PLANK
NOMREJ050800010	NOMAFLEX FOAM EXPANSION JOINT FILLER	1/2X8"X10' PLANK
NOMREJ075600010	NOMAFLEX FOAM EXPANSION JOINT FILLER	3/4X6"X10' PLANK
NOMREJ100800010	NOMAFLEX FOAM EXPANSION JOINT FILLER	1X8"X10' PLANK

## FOAM EXPANSION JOINT - ROLLS

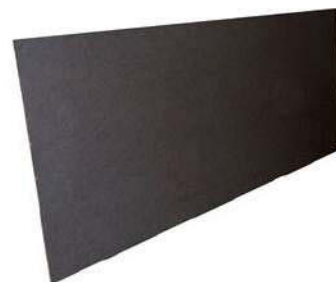
- Pre-scored strip is easily removed.
- Economical alternative to expansion joints
- Controls amount of sealant needed and acts as a bond breaker
- Other sizes available



PRODUCT NO.	DESCRIPTION	SIZE
WRM1411040	ST DECK-O-FOAM EXPANSION JOINT FILLER ROLL	1/4X4"X100'
NOMI205040004	FOAM ROLL	1/2" X 4" X 50'

## FOAM EXPANSION JOINT - SHEET

- Can be stored outside and will not absorb water, break, flake or leach
- Flexible yet rigid enough to be passed across a wet pour and can be used as a form



PRODUCT NO.	DESCRIPTION	SIZE
NOMREJ050480010	NOMAFLEX FOAM EXPANSION JOINT FILLER	1/2X48"X10' SHEET
WRM1503480100	CERAMAR FOAM EXPANSION JOINT FILLER	1/2X48"X10' SHEET
WRM1505480100	CERAMAR FOAM EXPANSION JOINT FILLER	3/4X48"X10' SHEET

## CONTACT US TODAY

1.888.272.3272

canadianservice@brafasco.com

Brafasco.com

**BRAFASCO**  
A WHITE CAP COMPANY

## OPEN A BRAFASCO ACCOUNT TODAY!



### CASH FLOW CONSERVATION

Regular Terms • Flexible Credit Limits



### PURCHASING ADVANTAGES

Pre-Ordering • Consistent Pricing • Quick Resolution • Access to Transaction History



### MULTIPLE BILLING OPTIONS

Your Choice • Organized Billings • Available at all Brafasco Locations



### AND MORE!

Increase or Establish Commercial Credit

#### CAST IN PLACE - COMPOSITE

- Delivered pre-assembled with an extra heavy duty anchoring system, specifically designed for easy insertion and embedment into fresh concrete



PRODUCT NO.	DESCRIPTION	SIZE
ADA2424NV6REPY	ADA CAST-IN-PLACE REPLACEABLE TILE W-S YELLOW KIT	2X2'
ADA2448NV8REPY	ADA CAST-IN-PLACE REPLACEABLE TILE W-S YELLOW KIT	2X4'
ADA2460NV11REPY	ADA CAST-IN-PLACE REPLACEABLE TILE W-S YELLOW KIT	2X5'

#### CAST IN PLACE - CAST IRON

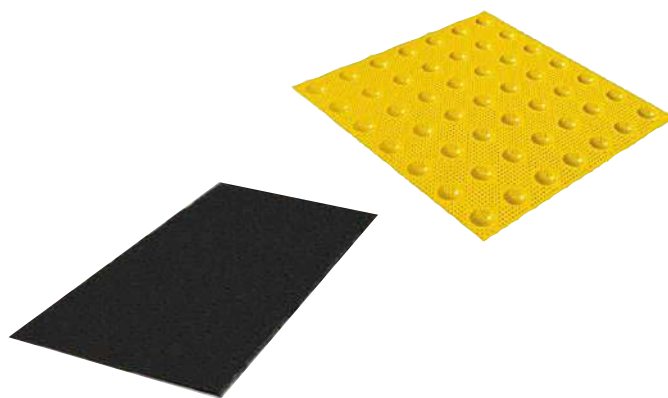
- Exterior grade case iron tactile system with the Iron-dome.
- Iron-dome is constructed from a durable exterior grade iron and is recommended to be installed in their natural, unfinished state which ensures the most reliable, long-term performance and aesthetic appeal



PRODUCT NO.	DESCRIPTION	SIZE
ADACASTIRON24X24	ADA IRONDOME REPLACEABLE TILE CAST IRON W-S KIT	2X2'
ADACASTIRON24X30	ADA IRONDOME REPLACEABLE TILE CAST IRON W-S KIT	2X2.5'

#### SURFACE APPLIED - COMPOSITE

- For use in retrofit applications
- Large perimeter beveled edges for smooth transition



PRODUCT NO.	DESCRIPTION	SIZE
BKITADA2436IDRET2B	ADA SURFACE APPLIED TILE	2X3' BLACK
BKITADA2436IDRET2Y	ADA SURFACE APPLIED TILE	2X3' YELLOW
BKITADA2448IDRET2B	ADA SURFACE APPLIED TILE	2X4' BLACK
BKITADA2448IDRET2Y	ADA SURFACE APPLIED TILE	2X4' YELLOW
BKITADA2460IDRET2SR	ADA SURFACE APPLIED TILE	2X5' SAFETY RED
BKITADA2460IDRET2Y	ADA SURFACE APPLIED TILE	2X5' YELLOW
BKITADA248RADRET B	ADA RADIUS SURFACE APPLIED TILE	2'X33.25" BLACK

# JOINT SEALANTS & FIRESTOP

## GENERAL PURPOSE POLYURETHANE SEALANT

- Single component formula based on urethane chemistry
- Paintable
- Flexible to keep moving joints weathertight
- Primerless to many substrates for quick installation and cost reduction
- Suitable for water immersion with primer



PRODUCT NO.	DESCRIPTION	VOLUME
BSF50426582	BASF MASTERSEAL NP1 SEALANT LIMESTONE	20 OZ SAUSAUGE
BSF50426583	BASF MASTERSEAL NP1 SEALANT LIMESTONE	10.1 OZ CARTRIDGE
BSF50426530	BASF MASTERSEAL NP1 SEALANT BLACK	20 OZ SAUSAUGE
BSF50426528	BASF MASTERSEAL NP1 SEALANT BLACK	10.1 OZ CARTRIDGE

## HIGH PERFORMANCE - HYBRID SEALANT

- Single component formula based on Silyl-Terminated Polyurethane (STPU) chemistry
- Paintable and flexible
- Commonly used for architectural joints such as stucco, plaster, windows installation and precast concrete panels
- Primerless



PRODUCT NO.	DESCRIPTION	VOLUME
BSF50363507	BASF MASTERSEAL NP100 SEALANT LIMESTONE	300ML CTRG
BSF50392840	BASF MASTERSEAL NP100 SEALANT LIMESTONE	20 OZ SAUSAUGE
BSF50387016	BASF MASTERSEAL NP100 SEALANT BLACK	300ML CTRG
BSF50393064	BASF MASTERSEAL NP100 SEALANT BLACK	20 OZ SAUSAUGE

## SELF LEVELING SEALANT

- Single component formula based on urethane chemistry
- No need for tooling
- Moisture cure



PRODUCT NO.	DESCRIPTION	VOLUME
BSF50450855	BASF MASTERSEAL SL 1 LIMESTONE	29 OZ
BSF50450856	BASF MASTERSEAL SL 1 LIMESTONE	10 OZ

## MARINE GRADE SEALANT

- Heavy duty sealant for marine and waterproofing projects
- Bonds to various substrates
- Polyether chemistry
- Isocyanate and solvent free



PRODUCT NO.	DESCRIPTION	VOLUME
AVM490ASEALMC	AVM AUSSIE SEAL M MARINE-GRADE SEALANT	10.1 OZ CTRG
AVM490ASEALMS	AVM AUSSIE SEAL M MARINE-GRADE SEALANT	20 OZ SSG

## ACOUSTICAL SEALANT

- Non-skinning, nonhardening, permanently flexible acoustical and vapour barrier sealant



PRODUCT NO.	DESCRIPTION	VOLUME
NUC44600	NUFLEX 446 ACOUSTICAL SEALANT BLACK	300ML
NUC44680	NUFLEX 446 ACOUSTICAL SEALANT BLACK	825ML

## CONSTRUCTION ADHESIVE

- Can be used on masonry, metal, composition board, gypsum board, and most foam insulations including EPS (expanded polystyrene foam), XPS (extruded polystyrene foam), polysio (Urethane), wood, hardwood flooring, concrete, stone, marble, slate, drywall and mirrors



PRODUCT NO.	DESCRIPTION	VOLUME
NUC48000	PREMIUM POLYURETHANE ADHESIVE	296 ML
NUC48080	PREMIUM POLYURETHANE ADHESIVE	828 ML

## THERMOPLASTIC SEALANT

- Non-staining, non-sag
- Paintable high performance solvent
- Interior and exterior use



PRODUCT NO.	DESCRIPTION	COLOUR
NUC64003	NUFLEX 640 THERMOPLASTIC SEALANT 300ML	BLACK
NUC64000	NUFLEX 640 THERMOPLASTIC SEALANT 300ML	CLEAR
NUC64001	NUFLEX 640 THERMOPLASTIC SEALANT 300ML	WHITE

## PAINTABLE SILICONIZED ACRYLIC

- Paintable, flexible, interior and exterior use
- All purpose sealant for cracks and joints
- Good adhesion on wood, concrete, metal, glass, stone, brick, stucco and marble
- Seals joints around baseboards, trims, doors, and bathroom fixtures/walls



PRODUCT NO.	DESCRIPTION	VOLUME
NUC18000	NUFLEX 180 PAINTABLE SILICONE CLEAR	300ML
NUC18001	NUFLEX 180 PAINTABLE SILICONE WHITE	300ML

# JOINT SEALANTS & FIRESTOP



## HIGH TEMPERATURE SILICONE SEALANT

- Hi-Temp formulation to perform at temperatures ranging from -65°C to 260°C under continuous operating conditions
- During intermittent exposure, caulking will withstand temperatures as high as 316°C (600°F)
- Ideal for a number of sealing and bonding applications



PRODUCT NO.	DESCRIPTION	VOLUME
NUC30213	NUFLEX 302 HI TEMP SILICONE BLACK	300ML
NUC30293	NUFLEX 302 HI TEMP SILICONE BLACK	83ML

## BI-CELLULAR FOAM BACKER ROD

- Soft bi-cellular (open and closed) polyethylene foam backer rod used in concrete construction
- Commonly used in expansion and contraction joints, window glazing, curtain wall construction partitions, parking decks, bridge construction, modular home gasketing and log home chinking



PRODUCT NO.	DESCRIPTION	SIZE
NOM3229106250	NOMACO SOF FOAM BACKER ROD 5/8" GREY	1550' REEL
NOM3229108750	NOMACO SOF FOAM BACKER ROD 7/8" GREY	850' REEL
NOM3229111250	NOMACO SOF FOAM BACKER ROD 1-1/8" GREY	750' REEL
NOM3229115001	NOMACO SOF FOAM BACKER ROD 1-1/2"X6' GREY	---
NOM3229120001	NOMACO SOF FOAM BACKER ROD 2"X6' GREY	---
NOM3229130001	NOMACO SOF FOAM BACKER ROD 3"X6' GREY	---

## GENERAL PURPOSE SILICONE SEALANTS

- 100% RTV Silicone
- Long term flexibility, excellent adhesion
- Mildew resistant
- NSF\* approved



PRODUCT NO.	DESCRIPTION	COLOUR
NUC30201	NUFLEX 302 GEN PURPOSE SILICONE 300ML	WHITE
NUC30208	NUFLEX 302 GEN PURPOSE SILICONE 300ML	TRANSLUCENT
NUC30200	NUFLEX 302 GEN PURPOSE SILICONE 300ML	CLEAR

## CLOSED-CELL FOAM BACKER ROD

- Closed-cell, polyethylene foam backer rod joint filler
- Used as a backing material for elastomeric and other cold-applied sealants
- Will not absorb water
- Commonly used in applications such as expansion and contraction joints, curtain walls, construction partitions, parking decks and bridge construction



PRODUCT NO.	DESCRIPTION
NOM3379102500	NOMACO HBR FOAM BACKER ROD 1/4" GRAY 3200' REEL
NOM3379103750	NOMACO HBR FOAM BACKER ROD 3/8" GRAY 1800' REEL
NOM3379105000	NOMACO HBR FOAM BACKER ROD 1/2" GRAY 2500' REEL
NOM3379106250	NOMACO HBR FOAM BACKER ROD 5/8" GRAY 1550' REEL
NOM3379107500	NOMACO HBR FOAM BACKER ROD 3/4" GRAY 1100' REEL
NOM3379108750	NOMACO HBR FOAM BACKER ROD 7/8" GRAY 850' REEL
NOM3379110000	NOMACO HBR FOAM BACKER ROD 1" GRAY 550' REEL
NOM3379112500	NOMACO HBR FOAM BACKER ROD 1-1/4" GRAY 400' REEL
NOM3379115001	NOMACO HBR FOAM BACKER ROD 1-1/2"X6' GRAY
NOM3379120001	NOMACO HBR FOAM BACKER ROD 2"X6' GRAY
NOM3379125001	NOMACO HBR FOAM BACKER ROD 2-1/2"X6' GRAY
NOM3379130001	NOMACO HBR FOAM BACKER ROD 3"X6' GRAY
NOM3379140001	NOMACO HBR FOAM BACKER ROD 4"X6' GRAY

THE MOST KNOWLEDGEABLE PROS IN  
CONSTRUCTION & INDUSTRIAL SUPPLIES

## ONE STOP SHOPPING FOR ALL SKILLED TRADES

- We stock the hard to find items
- Expertise sourcing of non-stock and custom items quickly
- Customized vendor managed inventory solutions for the shop and jobsite
- Experienced and knowledgeable sales team
- Centralized order desk that services all of Canada



**BRAFASCO**  
A WHITE CAP COMPANY

CALL 1.888.BRAFASCO (1.888.272.3272)  
OR ONLINE AT  
WWW.BRAFASCO.COM

# GENERAL CONSTRUCTION

## COMMON NAILS

- Made of hardened steel and have fluted shafts that help sink into the concrete



PRODUCT NO.	DESCRIPTION	SIZE
NALSTCMBO350BX	NAIL COMMON BRIGHT 50LB/BX (-40/LB)	3-1/2"
NALSTCMBO200BX	NAIL COMMON BRIGHT 50LB/BX (-170/LB)	2"
NALSTDHBO300BX	NAIL DUPLEX BRIGHT 50LB/BX (-49/LB)	3"

## ADHESIVE ANCHOR - VINYLESTER

- A two-component vinylester adhesive anchoring system. The system includes injection adhesive in plastic cartridges, mixing nozzles, dispensing tools and hole cleaning equipment used for doweling and anchoring



PRODUCT NO.	DESCRIPTION	VOLUME
POW8478SD	POWERS VINYLESTER AC100+ GOLD QUIK-SHOT CARTRIDGE	10 OZ
POW8490SD	POWERS VINYLESTER AC100+ GOLD DUAL CARTRIDGE	28 OZ

## ADHESIVE ANCHOR - EPOXY

- Two-component adhesive anchoring system designed to bond threaded rod and reinforcing bar hardware into drilled holes in concrete base materials
- The system includes plastic cartridges with injection adhesive, mixing nozzles, dispensing tools, and hole cleaning equipment



PRODUCT NO.	DESCRIPTION	VOLUME
POW08310SD	POWERS EPOXY PURE110+ QUIK-SHOT CARTRIDGE	9 OZ
POW08321SD	POWERS EPOXY PURE110+ DUAL CARTRIDGE	21 OZ
ITWC6P30	RED HEAD EPCON C6+ EPOXY CARTRIDGE	30 OZ

## ADHESIVE ANCHOR - HYBRID

- Fast dispensing, fast curing hybrid adhesive
- This hybrid epoxy is dispensed from a dual cartridge through a static mixing nozzle directly into the anchor hole
- Quick cure adhesive specifically designed for both structural and non-structural anchoring applications



PRODUCT NO.	DESCRIPTION	VOLUME
ITWA7P10	ITW EPCON A7+ CONCRETE ADHESIVE ANCHOR A7P-10	10 OZ
ITWA7P28	ITW EPCON A7+ CONCRETE ADHESIVE ANCHOR A7P-28	28 OZ
UCAFR528MAX	UCAN FLO-ROK FR5MAX EPOXY CRTG W/2PC MIXING NOZZLE	28 OZ

## HAND HELD MIXING DRILLS

- Powerful 2-speed paddle mixer for a wide range of mixing tasks up to 60 litres
- Particularly robust and powerful with the comfort of the professional class. The ergonomically shaped handles and the raised working position make it possible to work in a way that is easy on the operator's strength and back



PRODUCT NO.	DESCRIPTION	VOLUME
CLMX01	COLLOMIX HAND-HELD MIXER 110V/1.4HP KIT	10GAL
CLMX04	COLLOMIX HAND-HELD MIXER 110V/1.7HP KIT	17GAL
CLMX06	COLLOMIX HAND-HELD MIXER 110V/2.1HP KIT	24GAL

## ALUMINUM PLACERS

- Powder-coated finish that's braced for additional strength
- Durable, sturdy construction and that gives you control and reliability while the lightweight material prevents fatigue



PRODUCT NO.	DESCRIPTION
MRSAP753	MT 19-1/2X4" ALL ALUMINUM PLACER 60" WELDED HANDLE

## EDGERS

- Helps make edges on concrete slabs and come with a DuraSoft® handle that offers extra comfort
- Helps prevent cracks and with both ends on the curved edger angled, you can conveniently go in either direction



PRODUCT NO.	DESCRIPTION
MRS36D	MT 6X3" EDGER STRAIGHT ENDS 3/8"RX1/2"L DURASOFT HANDLE

## CONCRETE BROOMS

- 2-3/4-inch polypropylene bristles set solidly into a natural lacquered hardwood block
- Threaded hole accepts any standard broom handle
- Ideal for applying non-slip finishes to newly finished concrete surfaces



PRODUCT NO.	DESCRIPTION	SIZE
MRS847	MT CONCRETE BROOM WOOD BLOCK	36"
MRS848	MT CONCRETE BROOM WOOD BLOCK	48"

## CONCRETE SCREW ANCHOR

- A one-piece, heavy duty screw anchor with a finished hex head
- Simple to install, easy to identify and fully removable
- Patented thread design for use with standard ANSI drill bits, reduces installation torque and enhances productivity



PRODUCT NO.	DESCRIPTION	SIZE
POWPFM1411000	SCREWBOLT+ SCREW ANCHOR	1/4" X 1-1/4"
POWPFM1411020	SCREWBOLT+ SCREW ANCHOR	1/4" X 1-3/4"
POWPFM1411060	SCREWBOLT+ SCREW ANCHOR	1/4" X 2-1/4"
POWPFM1411080	SCREWBOLT+ SCREW ANCHOR	1/4" X 2-5/8"
POWPFM1411100	SCREWBOLT+ SCREW ANCHOR	1/4" X 3"
POWPFM1411160	SCREWBOLT+ SCREW ANCHOR	3/8" X 1-3/4"
POWPFM1411220	SCREWBOLT+ SCREW ANCHOR	3/8" X 2-1/2"
POWPFM1411240	SCREWBOLT+ SCREW ANCHOR	3/8" X 3"
POWPFM1411280	SCREWBOLT+ SCREW ANCHOR	3/8" X 4"
POWPFM1411300	SCREWBOLT+ SCREW ANCHOR	3/8" X 5"
POWPFM1411320	SCREWBOLT+ SCREW ANCHOR	3/8" X 6"
POWPFM1411340	SCREWBOLT+ SCREW ANCHOR	1/2" X 2"
POWPFM1411360	SCREWBOLT+ SCREW ANCHOR	1/2" X 2-1/2"
POWPFM1411380	SCREWBOLT+ SCREW ANCHOR	1/2" X 3"
POWPFM1411420	SCREWBOLT+ SCREW ANCHOR	1/2" X 4"
POWPFM1411460	SCREWBOLT+ SCREW ANCHOR	1/2" X 5"
POWPFM1411480	SCREWBOLT+ SCREW ANCHOR	1/2" X 6"
POWPFM1411520	SCREWBOLT+ SCREW ANCHOR	1/2" X 8"
POWPFM1411540	SCREWBOLT+ SCREW ANCHOR	5/8" X 3"
POWPFM1411580	SCREWBOLT+ SCREW ANCHOR	5/8" X 4"
POWPFM1411600	SCREWBOLT+ SCREW ANCHOR	5/8" X 5"
POWPFM1411640	SCREWBOLT+ SCREW ANCHOR	5/8" X 6"
POWPFM1411680	SCREWBOLT+ SCREW ANCHOR	5/8" X 8"
POWPFM1411700	SCREWBOLT+ SCREW ANCHOR	3/4" X 3"
POWPFM1411720	SCREWBOLT+ SCREW ANCHOR	3/4" X 4"
POWPFM1411760	SCREWBOLT+ SCREW ANCHOR	3/4" X 5"
POWPFM1411800	SCREWBOLT+ SCREW ANCHOR	3/4" X 6"
POWPFM1411840	SCREWBOLT+ SCREW ANCHOR	3/4" X 8"
POWPFM1411880	SCREWBOLT+ SCREW ANCHOR	3/4" X 10"

## FLOATS

- QLT Foam Floats and Sponge Floats wear well and do an excellent job on sand surfaces
- Magnesium Bull Floats are made from the finest extruded magnesium available, creating the easiest way to bring a quality look to your concrete finish
- The float has a lightweight design that is properly balanced with its long-wearing frame to result in efficiently eliminating high or low spots



PRODUCT NO.	DESCRIPTION	SIZE
MRS143D	MT MAGNESIUM FLOAT DURASOFT HANDLE ROUND END	16X3-1/8"
MRS38	MT FINE CELL RED RUBBER FLOAT	9X4X5/8"
MRS34	MT REDWOOD FLOAT 3/4" THICK	12X5"
MRS145D	MT MAGNESIUM FLOAT DURASOFT HANDLE	16X3-1/8"
MRS16M	MT REPLACEMENT WOOD HANDLE (MAGNESIUM FLOATS)	---
MRS39	MT COARSE CELL RED RUBBER FLOAT	9X4X5/8"
MRS4820	MT FEMALE THREADED ADAPTER PUSH BUTTON HANDLE	---
MRS148D	MT CAST MAGNESIUM FLOAT DURASOFT HANDLE	16X3-1/8"
MRS145RW	MT MAGNESIUM FLOAT WOOD HANDLE	16X3-1/8"
MRSBF9	MT THE ROCK-IT 2.0 BULL FLOAT BRACKET	---
MRSB48	MT MAGNESIUM BULL FLOAT SQUARE END	48X8"
MRSB48FR	MT MAGNESIUM BULL FLOAT ROUND END	48X8"

## POWER STUD

- A fully threaded wedge anchor with torque-controlled expansion designed for consistent performance in concrete
- Provides standard performance requirements; the anchor body and the expansion clip are made from carbon steel that is zinc plated



PRODUCT NO.	DESCRIPTION	SIZE	PRODUCT NO.	DESCRIPTION	SIZE
POW7400SD1	POWER-STUD+ SD1	1/4 X 1-3/4	POW7434SD1	POWER-STUD+ SD1	5/8 X 6
POW7402SD1	POWER-STUD+ SD1	1/4 X 2-1/4	POW7436SD1	POWER-STUD+ SD1	5/8 X 7
POW7404SD1	POWER-STUD+ SD1	1/4 X 3-1/4	POW7438SD1	POWER-STUD+ SD1	5/8 X 8-1/2
POW7409SD1	POWERSTUD+ SD1 TIE-WIRE 1/4		POW7439SD1	POWER-STUD+ SD1	5/8 X 10
POW7410SD1	POWER-STUD+ SD1	3/8 X 2-1/4	POW7440SD1	POWER-STUD+ SD1	3/4" X 4 1/4"
POW7412SD1	POWER-STUD+ SD1	3/8 X 2-3/4	POW7441SD1	POWER-STUD+ SD1	3/4" X 4 3/4"
POW7413SD1	POWER-STUD+ SD1	3/8 X 3	POW7442SD1	POWER-STUD+ SD1	3/4" X 5 1/2"
POW7414SD1	POWER-STUD+ SD1	3/8 X 3-1/2	POW7444SD1	POWER-STUD+ SD1	3/4" X 6 1/4"
POW7415SD1	POWER-STUD+ SD1	3/8 X 3-3/4	POW7446SD1	POWER-STUD+ SD1	3/4" X 7"
POW7416SD1	POWER-STUD+ SD1	3/8 X 5	POW7448SD1	POWER-STUD+ SD1	3/4" X 8 1/2"
POW7417SD1	POWER-STUD+ SD1	3/8 X 7	POW7449SD1	POWER-STUD+ SD1	3/4" X 10"
POW7420SD1	POWER-STUD+ SD1	1/2 X 2-3/4	POW7450SD1	POWER-STUD+ SD1	7/8" X 6"
POW7422SD1	POWER-STUD+ SD1	1/2 X 3-3/4	POW7451SD1	POWER-STUD+ SD1	3/4" X 12"
POW7423SD1	POWER-STUD+ SD1	1/2 X 4-1/2	POW7452SD1	POWER-STUD+ SD1	7/8 X 8
POW7424SD1	POWER-STUD+ SD1	1/2 X 5-1/2	POW7454SD1	POWER-STUD+ SD1	7/8" X 10"
POW7426SD1	POWER-STUD+ SD1	1/2 X 7	POW7461SD1	POWER-STUD+ SD1	1" X 6"
POW7427SD1	POWER-STUD+ SD1	1/2 X 8-1/2	POW7463SD1	POWER-STUD+ SD1	1 X 9
POW7428SD1	POWER-STUD+ SD1	1/2 X 10	POW7465SD1	POWER-STUD+ SD1	1" X 12"
POW7430SD1	POWER-STUD+ SD1	5/8 X 3-1/2	POW7473SD1	POWER-STUD+ SD1	1-1/4 X 9
POW7432SD1	POWER-STUD+ SD1	5/8 X 4-1/2	POW7475SD1	POWER-STUD+ SD1	1-1/4" X 12"
POW7433SD1	POWER-STUD+ SD1	5/8 X 5			

## 304 STAINLESS STEEL WEDGE ANCHOR

- Should only be installed in concrete that is solid and should never be used in lightweight or hollow materials, such as block or brick
- The 304 stainless steel used in the wedge anchor has the innate ability to form a protective surface that prevents corrosion



PRODUCT NO.	DESCRIPTION	SIZE
POW7300SD4	POWERSTUD+ 304SS	1/4" X 1 3/4"
POW7302SD4	POWERSTUD+ 304SS	1/4" X 2 1/4"
POW7304SD4	POWERSTUD+ 304SS	1/4" X 3 1/4"
POW7313SD4	POWERSTUD+ 304SS	3/8" X 3"
POW7315SD4	POWERSTUD+ 304SS	3/8" X 3 3/4"
POW7316SD4	POWERSTUD+ 304SS	3/8" X 5"
POW7322SD4	POWERSTUD+ 304SS	1/2" X 3 3/4"
POW7323SD4	POWERSTUD+ 304SS	1/2" X 4 1/2"
POW7324SD4	POWERSTUD+ 304SS	1/2" X 5 1/2"
POW7326SD4	POWERSTUD+ 304SS	1/2" X 7"
POW7333SD4	POWERSTUD+ 304SS	5/8" X 5"
POW7334SD4	POWERSTUD+ 304SS	5/8" X 6"
POW7338SD4	POWERSTUD+ 304SS	5/8" X 8 1/2"

# GENERAL CONSTRUCTION

## MASON LINE

- Tested with over 100 lbs. without snapping, rotting or breaking
- Able to handle extreme moisture and dryness while protecting against mildew
- Will not break if accidentally hit by a mason's trowel
- Solid bright white colour makes it easy to use
- Abrasion and alkali resistant



PRODUCT NO.	DESCRIPTION	SIZE
MRS629	MT MASON LINE TWISTED NYLON	1000' WHITE

## ICE/SIDEWALK SCRAPER

- Reduce the risk of slip-and-fall accidents in winter with the 7" Forged Blade Sidewalk/Ice Scraper with Wood Handle
- Its forged head easily lifts away ice from walkways, parking lots and driveways
- Socket pattern helps keep it secured to the North American handle for added durability



PRODUCT NO.	DESCRIPTION
GARAFSW7	GAR ALPINE ICE/SIDEWALK SCRAPER 7" BLADE 48" HANDLE

## MIXING TOOLS

- Designed to mixing setting materials quickly and easily
- Designed to mix thin set, grout and mortar
- Shaft is 30" long



PRODUCT NO.	DESCRIPTION	SIZE
MRS819	MT 28" QUIK-MIX MIXING TOOL	8-1/2X4-1/2" BLADE
MRS897	MT EGGBEATER MIXING TOOL	30"

## PICKS

- 5lb forged and tempered steel head for increased strength and rigidity
- 36" (91.4 cm) varnished hickory handle and texturized anti-slip grip allows for sure and safe manipulation



PRODUCT NO.	DESCRIPTION	SIZE
GARCAP19	GAR PRO PICK & MATTOCK 5LB SAFETY GRIP HANDLE	36"

## PUTTY KNIFE

- Easily spread putty in applied areas or use as a crack cleaner



PRODUCT NO.	DESCRIPTION	SIZE
MRSM7073	MT PUTTY KNIFE FLEX STREAMLINER ROSEWOOD HANDLE	3/4"

## SCRAPERS

- Features a heavy gauge spring steel blade welded steel handle with a plastic grip
- Excellent clean-up tool made from heavy-duty a construction



PRODUCT NO.	DESCRIPTION	SIZE
MRS820	MT FLOOR SCRAPER W/60" HANDLE	20X4"

## HANDLE W/STEEL CLEVIS

- 72" Ash Handle for concrete finishing
- Includes steel clevis for groover attachment



PRODUCT NO.	DESCRIPTION	SIZE
MRS10	MT ASH HANDLE W/STEEL CLEVIS	72"

## MASONRY BRUSHES

- An acid brush with a combination of Tampico and Palmyra fibers that resist harsh acids and remove marks and stains on masonry
- Bristles are 3" long and stand up to rugged use



PRODUCT NO.	DESCRIPTION	SIZE
MRS829	MT MASONRY BRISTLE BRUSH	6-1/2X3-1/2"

## MONSTER PRY BARS

- Ideal for prying forms, nails and other embedded objects
- Made of all-steel construction for a long life
- 56" length bar gives you additional leverage to move tough objects



PRODUCT NO.	DESCRIPTION	SIZE
MRS10453	MT OPEN ANGLE MONSTER PRY BAR	56"

## PRYBARS

- 60" (152.4 cm), 18lb tool made of excellent quality forged and tempered steel for increased strength and rigidity
- Beveled head with 1-1/8" (2.9 cm) blade



PRODUCT NO.	DESCRIPTION	SIZE
GARCB60PC	GAR PRO CROWBAR 18LB PINCH POINT	60"

## RAKES

- One of the quickest ways in getting the freshly-poured concrete spread evenly
- Concrete rakes (also known as come-along rakes) are superior to garden rakes with a more scooped blade for easier pre-leveling on new concrete



PRODUCT NO.	DESCRIPTION	SIZE
SMR42320	SMR PROVALUE BOW RAKE WELDED 13.7" HEAD	54" HANDLE
GARGCR14	GAR PRO LEVEL RAKE DOUBLE-BACK 14-TINES	60" HANDLE
GARGLR14	GAR PRO LEVEL RAKE STEEL 14-TINES	60" HANDLE
GARGAR14	GAR PRO ASPHALT RAKE STEEL 14-TINES	60" HANDLE

**BRAFASCO HAS ALL THE SAFETY SUPPLIES FOR CONSTRUCTION**



# GENERAL CONSTRUCTION

## SLEDGE HAMMERS

- Non-slip grip for more precision and safety
- 32" handle length, head weight 8 lbs
- Drop forged tempered steel heads and two-piece slip eye connection with overstrike protection - no epoxy required



PRODUCT NO.	DESCRIPTION	SIZE
GARDF0832	GAR PRO SLEDGE HAMMER 8LBS	32" SAFETY GRIP HANDLE

## CONCRETE SPRAYERS

- 4" wide mouth makes it for easy filling and cleaning
- cures and form oils used for concrete construction
- Features exclusive TRI-POXY lined steel for triple protection against corrosion, rust and damage from denting



PRODUCT NO.	DESCRIPTION
CPN19049	CHAPIN XTREME CONCRETE SPRAYER 3.5GAL TRIPOXY
CPN1961N	CHAPIN BRIGADE CONCRETE SPRAYER 3.5GAL TRIPOXY

## SHOVELS

- For digging, lifting, and moving bulk materials such as soil, coal, gravel, snow, sand and more



PRODUCT NO.	DESCRIPTION	SIZE
SMR49150	SMR S400 ROUND SHOVEL BLADE 48" HANDLE	9.5"
SMR49152	SMR S400 SQUARE SHOVEL BLADE 48" HANDLE	9.5"
SMR49831	SMR SMARTBUY ROUND SHOVEL BLADE 26" D-HANDLE	8.5"
SMR49833	SMR SMARTBUY SQUARE SHOVEL BLADE 26" D-HANDLE	9"
GARBAG10	GAR PRACTICA GRAIN SCOOP #10 ALUMINUM BLADE	---

## TROWELS

- Finishing Trowels have a flat, yet flexible thinner blade that makes applications
- easier with more of a consistent, quality finish



PRODUCT NO.	DESCRIPTION	SIZE
MRSC36R	MT FRESNO ALL ANGLE SWIVEL ROUND END	36X5"
MRS97	MT MARGIN TROWEL WOOD HANDLE	5X2"
MRSMS64BRD	MT BLUE STEEL FINISHG TROWEL DURASOFT ROUND END	14X4"
MRSMS64BD	MT BLUE STEEL FINISHG TROWEL DURASOFT SQUARE END	14X4"
MRSMS64FRD	MT FINISHING TROWEL DURASOFT HANDLE ROUND END	14X4"
MRSSP14SD	MT POOL TROWEL DURASOFT HANDLE	14X4"
MRS191FG	MT BRICK TROWEL DURASOFT HANDLE	11X5-1/2"
MRSMS64D	MT FINISHING TROWEL DURASOFT HANDLE SAUARE END	14X4"
MRS52D	MT MARGIN TROWEL DURASOFT HANDLE	5X2"
MRS95	MT POINTING TROWEL WOOD HANDLE	5-1/2X2-3/4"
MRS54	MT MARGIN TROWEL WOOD HANDLE	5X1-1/2"
MRSMS66D	MT FINISHING TROWEL DURASOFT HANDLE SQUARE END	16X4"
MRSSP16SD	MT POOL TROWEL DURASOFT HANDLE	16X4-1/2"
MRSMS20D	MT CURVED END FINISHING TROWEL DURASOFT HANDLE	20X4"
MRS456D	MT POINTING TROWEL DURASOFT HANDLE	6X2-3/4"

## SPIKED SHOES

- Protects floors and remove air bubbles during the application process
- Precisely positioned around the base, the steel spikes allows balance when walking on epoxy and other materials
- The back of each shoe has a stop to prevent work boots from moving around the shoe



PRODUCT NO.	DESCRIPTION
MRS6186	MT GUNITE SHOES OS BLACK W/1" SPIKES (CONCRETE OVERLAYS)

## WHEELBARROWS

- Easier transport than boxes or crates by one person in stable moves, or rolling it for long distances
- Also available in flat-free tires



PRODUCT NO.	DESCRIPTION
SMR85731	SMR EXCAVATOR 6 CU.FT. BLUE WHEELBARROW F-F TIRE

## CAULKING DISPENSING GUN

- Dispense caulking and other sealants into gaps and cracks to help in seal out moisture, debris, and air
- Bulk loaders caulking guns are also available



PRODUCT NO.	DESCRIPTION	VOLUME
PER800368	PERMATEX SHORT CAULKING GUN	---
NUC00113	NUFLEX STANDARD CAULKING GUN	300ML
NUCCG620AL	NUFLEX HEAVY DUTY SAUSAGE CAULKING GUN	---
NUC00128	NUFLEX HEAVY DUTY CAULKING GUN	850ML
NUC00138	NUFLEX HEAVY DUTY CAULKING GUN	300ML

## SAFETY FENCE

- Lightweight plastic netting temporary fence designed to barricade small areas from entry/exit
- Vibrant colour creates a visual barrier for protection
- Rolls up and stores easily for future use



PRODUCT NO.	DESCRIPTION	SIZE
SAFET0800276	BARRIER FENCE ORANGE (DIAMOND) LIGHTWEIGHT	4X50'
SAFET0800278	BARRICADE "CAUTION" FENCE ORANGE HEAVYWEIGHT	4X50'

## SNOW FENCE

- Designed for colder climates, this won't crack or break in the cold
- Mesh design allows wind to blow through without falling over



PRODUCT NO.	DESCRIPTION	SIZE
SAFET0800275	SNOW FENCE ORANGE (OVAL) HEAVYWEIGHT	4X50'

## T- BAR POST

- To be used with safety fences or snow fence support



PRODUCT NO.	DESCRIPTION
SAFET0800290	POINTED STEEL T-POST 6' GREEN
SAFET0800270	STEEL MANUAL T-POST POUNDER
MYCTT7	TT7 7' POINTED STEEL POST

# GENERAL CONSTRUCTION

## BATTERY POWERED CAULKING GUN

- One of the lightest, compact cordless powered caulk gun on the market
- Up to 400 pounds of pushing force easily dispenses everyday construction sealants and adhesives



PRODUCT NO.	DESCRIPTION	VOLUME
MIL264321CT	MILWAUKEE M18 CAULKING GUN SAUSAGE KIT CLEAR BARREL	20 OZ
MIL264221CT	MILWAUKEE M18 CAULKING GUN SAUSAGE KIT ALUMINUM BARREL	20 OZ
MIL264121CT	MILWAUKEE M18 CAULKING GUN CARTRIDGE KIT	10 OZ
MIL264120	MILWAUKEE M18 CAULKING GUN CARTRIDGE (BARE TOOL)	10 OZ
MIL244421	MILWAUKEE M12 CAULKING GUN QUART CARTRIDGE KIT	---
MIL244221	MILWAUKEE M12 CAULKING GUN SAUSAGE KIT ALUMINUM BARREL	20 OZ
MIL244121	MILWAUKEE M12 CAULKING GUN CARTRIDGE KIT	10 OZ
MIL244120	MILWAUKEE M12 CAULKING GUN CARTRIDGE (BARE TOOL)	10 OZ
DEWDCE580B	DEWALT 20V MAX CAULKING GUN SAUSAGE (BARE TOOL)	29 OZ
DEWDCE570B	DEWALT 20V MAX CAULKING GUN CARTRIDGE (BARE TOOL)	29 OZ
DEWDCE560D1	DEWALT 20V MAX CAULKING GUN CARTRIDGE 2.0AH KIT	10 OZ
DEWDCE560B	DEWALT 20V MAX CAULKING GUN CARTRIDGE (BARE TOOL)	10 OZ

## EROSION CONTROL - SILT FENCE

- High strength geotextile that does not require additional reinforcing nets or other support systems
- Light duty fence is preassembled with 1.5" x 1.5" x 48" oakwood posts which are securely attached to the fabric using industrial staples
- The posts are tapered at the base



PRODUCT NO.	DESCRIPTION	SIZE
TFGHDSF3X100	TERRAFIX TERRAFENCE HD SILT FENCE POLY	3X100' W/STAKES
TFGLDSF3X100	TERRAFIX TERRAFENCE LD SILT FENCE POLY	3X100' W/STAKES

## EROSION CONTROL FILTER SOCK

- Filter sock (silt sock) for sediment & erosion control, stormwater management, green infrastructure, low impact development, pollutant removal and living walls applications



PRODUCT NO.	DESCRIPTION	SIZE
INDUS9050750	FILTREXX SILTSOXX	8"X48M GREEN

## BUILDER TUBES

- Concrete forming tubes stand strong as the most economical way to create round columns for buildings, entryways, structural columns, light posts and other commercial and residential structures
- Also available in poly gloss finish and sizes with an outside diameter of 10" to 60"
- Custom lengths available upon request



PRODUCT NO.	DESCRIPTION	SIZE
CAUEP10X144	CARAUSTAR EASY POUR CONCRETE FORMING TUBE	10X144"
CAUEP12X144	CARAUSTAR EASY POUR CONCRETE FORMING TUBE	12X144"
CAUEP16X144	CARAUSTAR EASY POUR CONCRETE FORMING TUBE	16X144"
CAUEP18X144	CARAUSTAR EASY POUR CONCRETE FORMING TUBE	18X144"
CAUEP20X144	CARAUSTAR EASY POUR CONCRETE FORMING TUBE	20X144"
CAUEP24X144	CARAUSTAR EASY POUR CONCRETE FORMING TUBE	24X144"
CAUEP30X144	CARAUSTAR EASY POUR CONCRETE FORMING TUBE	30X144"
CAUEP32X144	CARAUSTAR EASY POUR CONCRETE FORMING TUBE	32X144"
CAUEP36X144	CARAUSTAR EASY POUR CONCRETE FORMING TUBE	36X144"
CAUEP40X144	CARAUSTAR EASY POUR CONCRETE FORMING TUBE	40X144"

## MARKING PAINT

- Upside Down Marking Paint clearly marks the location of underground utilities and are the professionally preferred markers at construction sites



PRODUCT NO.	DESCRIPTION	COLOUR
RUS264697	RUSTOLEUM IC M1400 WB CONST MARKING PAINT 15OZ AEROSOL	FL ORANGE
RUS264692	RUSTOLEUM IC M1400 CONST MARKING USD AEROSOL	WHITE
RUS264694	RUSTOLEUM IC M1400 CONST MARKING USD AEROSOL	CAUTION BLUE

## DEBRIS NETTING

- Debris Netting fights the wind and elements to keep construction debris contained, protecting the surrounding area from falling or blowing items



PRODUCT NO.	DESCRIPTION	SIZE
NMN409482	NORSEMAN POLY DEBRIS NETTING	6.5'X165' GREEN
NMN409481	NORSEMAN POLY DEBRIS NETTING	10'X165' GREEN
NMN4088145	NORSEMAN POLY DEBRIS NETTING	6.5'X165' BLUE
NMN411180	NORSEMAN POLY DEBRIS NETTING	10'X165' BLUE

# YOUR SOURCE FOR POWER TOOLS & EQUIPMENT



# YOUR SAFETY SOLUTIONS PARTNER



## GET YOUR SAFETY TRAINING

- ✓ Qualitative fit test workshop for CSA Z94.4-18: Care and use of respirators
- ✓ Qualitative fit testing services
- ✓ Inspections of fall protection equipment: Detailed inspection logs
- ✓ Accredited Fall Protection Equipment Inspection course 5 hours
- ✓ M.O.L. accredited working at heights 8.5 hour course
- ✓ M.O.L. accredited working at heights refresher training 4 hour course
- ✓ Ladders inspections
- ✓ Hearing protection fit testing
- ✓ “A” to “D” approach to developing a fall rescue plan and demo seminar
- ✓ Silica exposure to workers: protection from silica hazards seminar



# YOUR FASTENER & ANCHOR PROVIDER



## STRUCTURAL BOLTS & ASSEMBLIES

MADE IN NORTH AMERICA

AVAILABLE IN: A325 • A490 • Tension Control (TC) • Types 1 & 3

FINISHES INCLUDE: Plain, Hot Dipped Galvanized and others upon special request



## CONSTRUCTION SCREWS

DEEP THREAD FOR QUICK AND EASY INSTALLATION

AVAILABLE IN SIZES: #8 X 1-1/4 TO #10 X 6"

**BROWN MAGNIGARD**  
TREATED LUMBER APPROVED



**GREEN MAGNIGARD**  
TREATED LUMBER APPROVED



**YELLOW ZINC**  
ZINC PLATED



## L-TYPE ANCHOR BOLTS

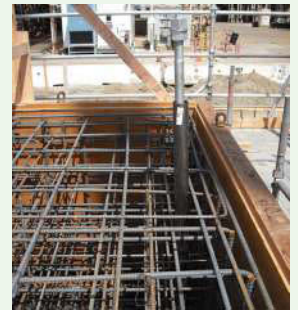
STOCKED IN:

1/2" to 1" diameter in lengths from 6" to 36" long

FINISHES INCLUDE:

Bare metal and Hot Dipped Galvanized available

SPECIAL MAKES, CUSTOM LENGTHS AND SHAPES AVAILABLE



**GRK FASTENERS™**  
UberGrade

DRIVE WITH SPEED, QUALITY & CONFIDENCE



NO STRIPPING  
Star Drive



NO SPLITTING  
CCE Thread



NO PRE-DRILLING  
ZIP-TIP™



NO WASTED TIME  
W-Cut™



AC257 Treated Lumber Approved

Available for use in structural applications as well as multi-purpose framing screws

**RSS RUGGED STRUCTURAL SCREW**

An easy to install lag alternative.

SIZE RANGE: #10x1-1/2 TO 3/8x20"



**R4 MULTI-PURPOSE SCREW**

Framing and Decking screws provide a faster drive.

Size Range: #8x1-1/2 to #12/14x12"



# YOUR TOOLS & EQUIPMENT SOURCE



**TOOLS &  
BATTERIES**



**GENERATORS &  
SUBMERSIBLE PUMPS**



**COMBO  
KITS**



**VIBRATORS,  
TAMPERS AND  
COMPACTORS**



**MEASUREMENT  
TOOLS**



**JOBSITE  
LIGHTING**



**HAND  
TOOLS**

# OVER 40 LOCATIONS ACROSS CANADA!

## BRITISH COLUMBIA

**BURNABY** 8061 Lougheed Hwy., Unit 160  
Burnaby, BC V5A 1W9  
Phone: 604.444.4217

**SURREY** 19299 96th Ave.  
Surrey, BC V4N 4C4  
Phone: 604.455.1229

**VANCOUVER** 443 Terminal Ave.  
Vancouver, BC V6A 2L7  
Phone: 778.327.4397

**\*VICTORIA** 2658 Wilfert Rd.  
Victoria, BC V9B 5Z3  
Phone: 250.384.8032

*\*Also a **Brock White** branch.*

## ALBERTA

**CALGARY** 5484 76th Ave SE.  
Calgary, AB T2C 4S3  
Phone: 587.955.9004

## ONTARIO

**BARRIE** 87 Patterson Rd.  
Barrie, ON L4N 3V9  
Phone: 705.734.1833

**BELLEVILLE** 250 Adam St.  
Belleville, ON K8N 5S4  
Phone: 613.967.4146

**BOLTON** 26 McEwan Dr.  
Bolton, ON L7E 1E6  
Phone: 905.857.7837

**BRAMPTON** 105 Heart Lake Rd. S.  
Brampton, ON L6W 3K1  
Phone: 905.451.7774

**BRANTFORD** 70 Morton Ave. E., Unit 2  
Brantford, ON N3R 7J7  
Phone: 519.720.9077

**BURLINGTON** 1155 Appleby Line  
Burlington, ON L7L 5H9  
Phone: 905.335.8003

**CAMBRIDGE** 1201 Franklin Blvd.  
Cambridge, ON N1R 6R7  
Phone: 519.622.9911

**CONCORD** 8600 Jane St.  
Concord, ON L4K 2M9  
Phone: 905.660.6289

**DOWNSVIEW** 77 Densley Ave.  
Toronto, ON M6M 2P5  
Phone: 416.244.6722

**ETOBICOKE** 84 Queen Elizabeth Blvd.  
Etobicoke, ON M8Z 1M5  
Phone: 416.255.9194

**GUELPH** 30 Fair Rd.  
Guelph, ON N1K 1T3  
Phone: 519.767.5566

**HAMILTON** 43 Teal Ave.  
Hamilton, ON L8E 3B1  
Phone: 905.575.7577

**KINGSTON** 1407 John Counter St., Unit 220  
Kingston, ON K7K 6A6  
Phone: 613.544.4427

**KITCHENER** 1455 Strasburg Rd.  
Kitchener, ON N2B 1H2  
Phone: 519.896.9090

**LINDSAY** 106 Fleetwood Rd.  
Lindsay, ON K9V 6C6  
Phone: 705.324.1772

**LONDON** 1398 Wellington Rd., Units 12-28  
London, ON N6E 3N8  
Phone: 519.649.7333

**MARKHAM** 7455 Victoria Park, Unit 1  
Markham, ON L3R 2Y7  
Phone: 905.415.7774

**MISSISSAUGA** 1295 Eglinton Ave. E.  
Mississauga, ON L4W 3E6  
Phone: 905.624.3744

**NEWMARKET** 1271 Gorham St.  
Newmarket, ON L3Y 8Y7  
Phone: 905.853.2300

**NIAGARA FALLS** 5232 Montrose Rd.  
Niagara Falls, ON L2H 1K5  
Phone: 905.353.8182

**OAKVILLE** 2709 Coventry Rd.  
Oakville, ON L6H 5V9  
Phone: 905.829.8799

**ORANGEVILLE** 63 Centennial Rd.  
Orangeville, ON L9W 3R1  
Phone: 519.941.7420

**ORO-MEDONTE** 99 Forest View Rd.  
Oro-Medonte, ON L3V 0R4  
Phone: 705.326.2500

**OTTAWA** 2692 Sheffield Road  
Ottawa, ON K1B 3V9  
Phone: 613.726.6666

**OTTAWA** 10 Camelot Dr.  
Ottawa, ON K2G 5X8  
Phone: 613.274.7000

**PETERBOROUGH** 711 The Kingsway,  
Peterborough, ON K9J 6W7  
Phone: 705.741.2658

**PICKERING** 1698 Bayly St.  
Pickering, ON L1W 1L9  
Phone: 905.839.4271

**REXDALE** 75 City View Dr.  
Rexdale, ON M9W 5A5  
Phone: 416.248.9595

**SARNIA** 832 Confederation St.  
Sarnia, ON N7T 2E3  
Phone: 519.337.5225

**SCARBOROUGH** 50 Milner Ave.  
Scarborough, ON M1S 3P8  
Phone: 416.298.0095

**ST. CATHARINES** 227 Bunting Rd.  
St. Catharines, ON L2M 3Y2  
Phone: 905.685.1855

**SUDBURY** 1010 Lorne St.  
Sudbury, ON P3C 4R9  
Phone: 705.671.1279

**TIVERTON** 3245 Bruce Road 20  
Tiverton, ON N0G 2T0  
Phone: 519.368.5751

**TORONTO** 8 Carlaw Ave.  
Toronto, ON M4M 2R7  
Phone: 416.466.5140

**VAUGHAN** 100 Galcat Dr.  
Vaughan, ON L4L 0B9  
Phone: 905.265.4994

**WINDSOR** 3350 North Talbot Rd., Unit 1  
Oldcastle ON NOR 1L0  
Phone: 519.737.7023

## NOVA SCOTIA

**DARTMOUTH** 73 Williams Ave., Unit 1  
Dartmouth, NS B3B 2E3  
Phone: 902.468.0820

## NEW BRUNSWICK

**MONCTON** 70 Loftus St.  
Moncton Ind Park, Moncton, NB E1E 2N2  
Phone: 506.855.8008

**FREDERICTON** 140 Alison Blvd., Suite 5  
Fredericton, NB E3V 0A9  
Phone: 506.457.1972

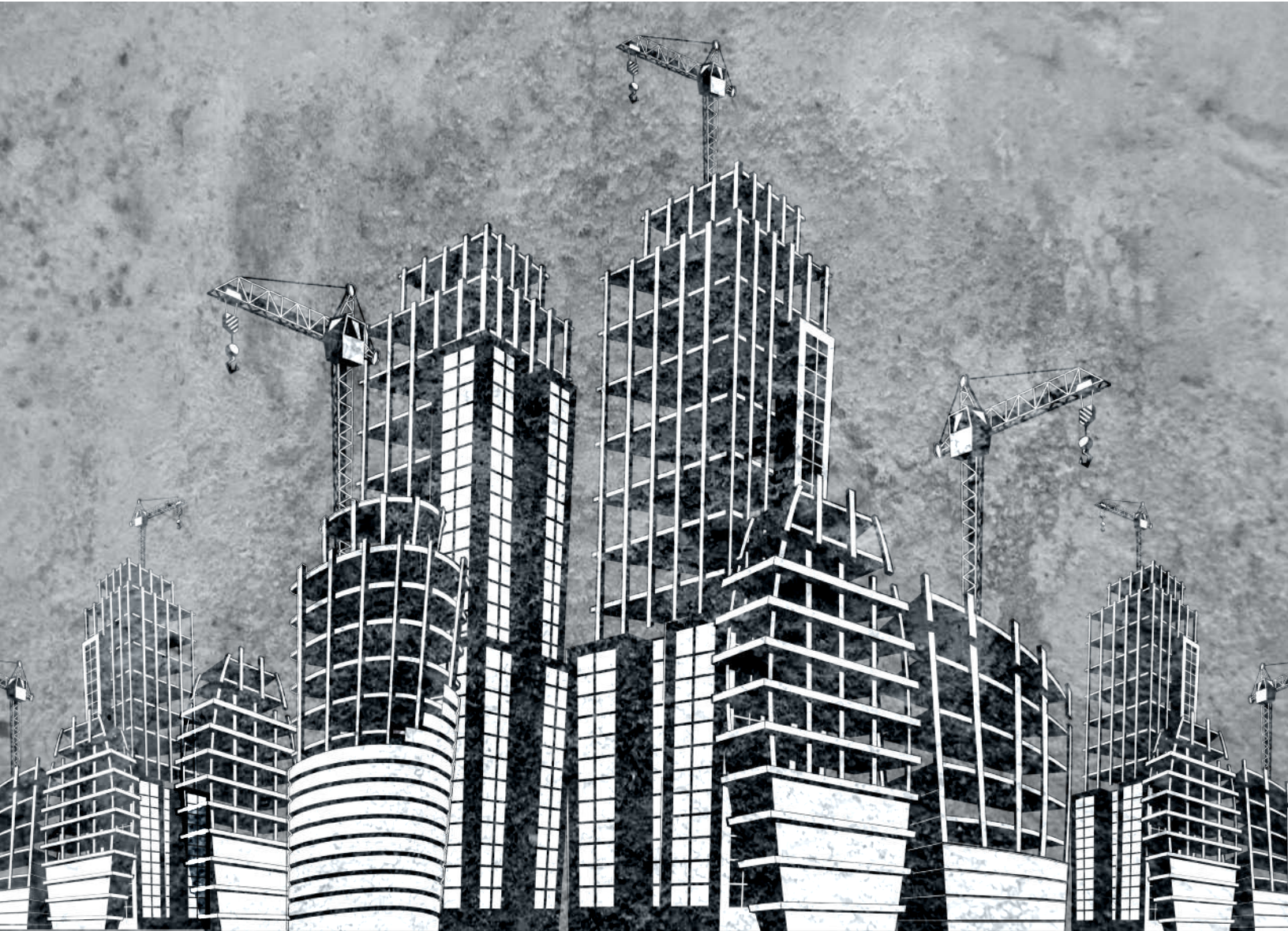
## PRINCE EDWARD ISLAND

**CHARLOTTETOWN** 3 MacAusland Dr.  
Charlottetown, PEI C1A 6P7  
Phone: 902.368.11321



CONNECT TO YOUR LOCAL BRANCH BY CALLING: 1.888.BRAFASCO (1.888.272.3272) OR ONLINE AT [WWW.BRAFASCO.COM](http://WWW.BRAFASCO.COM)

# CONCRETE SOLUTIONS



**BRAFASCO**<sup>®</sup>  
A WHITE CAP COMPANY

**1.888.272.3272 | BRAFASCO.COM**

OVER 40 LOCATIONS ACROSS CANADA TO SERVE YOU BETTER

