



ARCHITECTURAL WALL PANELS
Single Family Full Line Catalog



VINTAGEWOOD Cedar

OWN YOUR NICHE WITH NICHIIHA.

At Nichiha, we're all about building better. Whether you're looking for a contemporary, craftsman or a modern design, Nichiha offers all-weather, high-performance products with uncompromising durability.



EMPIREBLOCK | VINTAGEWOOD Spruce



INDUSTRIALBLOCK

8 | DESIGNER SERIES

12 | DIMENSION SERIES

16 | MODERN SERIES

18 | WOOD SERIES

24 | CONCRETE SERIES

26 | BRICK SERIES

28 | MASONRY SERIES

30 | ESSENTIAL FLASHING

32 | INSTALLATION HARDWARE & TRIM





MULTIPLE LOOKS. ONE SOURCE.

Less time managing, more time imagining.

Why settle for one look when you can get multiple textures and finishes from a single manufacturer? With Nichiha Architectural Wall Panels, you can mix and match cladding styles to achieve the varied look you've been searching for. Whether you're looking for metal, stone, wood, concrete or brick, we have it all. Plus, all of our panel styles operate on the same clip installation system — saying goodbye to multiple contractors. You'll be able to move from conception to completion with ease, all while saving time and money.



USEFUL TIP

Add the finishing touches to your next project with our Essential Flashing on page 30.



COLOR XPRESSIONS

Open your project up to a nearly limitless world of color possibilities.



Photography: Ed Massery

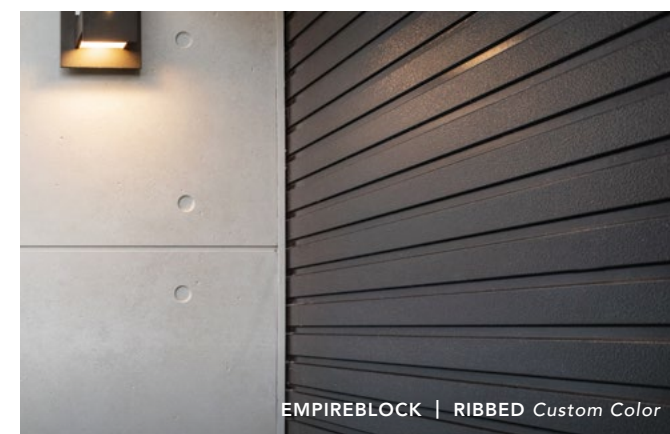
ILLUMINATION Custom Color

Nichiha's Color Xpressions system provides a degree of design freedom that most cladding products don't offer. It delivers the strength of fiber cement in virtually any color, making it easier than ever to match your design vision seamlessly. The three-step process is simple:

- ① Choose the exact color you want
- ② Connect with a Nichiha representative who will coordinate the delivery of swatches
- ③ Sign off on your color selection

This premium feature is available for Illumination, Ribbed, Latura V-Groove and TuffBlock panels and has no minimum order required. In addition to offering matching trim pieces, Color Xpressions is backed by a 15-year limited factory-applied finish warranty.

*See Nichiha warranties for detailed information on terms, conditions and limitations.



EMPIREBLOCK | RIBBED Custom Color



ILLUMINATION Custom Color



LOOK FOR THIS ICON

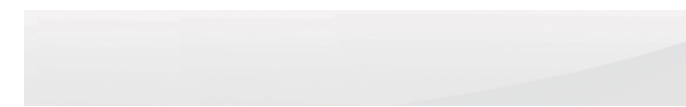
You'll see this icon next to the products available in Color Xpressions: Illumination, Ribbed, Latura V-Groove and TuffBlock.



THE DESIGNER SERIES

MIRAIA Onyx

MIRAIA



SNOW



GLACIER



ONYX

NOTE: Miraia panels are only available with metal trim corner options. Prefinished corners are not available. See page 33 for more information.

MIRAIA SPECS

AWP 1818

DIMENSIONS (ACTUAL MM)	17-7/8" H x 71-9/16" L (455MM H x 1818MM L)
THICKNESS (ACTUAL MM)	5/8" (16MM)
WEIGHT (LBS. PER PANEL)	37.9
WEIGHT (LBS. PER SQ. FT.)	4.19
EXPOSED COVERAGE (SQ. FT. PER PANEL)	8.88 SQ. FT.
PACKAGING (PIECES PER PACK)	2 [17.76 SQ. FT.]



MIRAIA Onyx

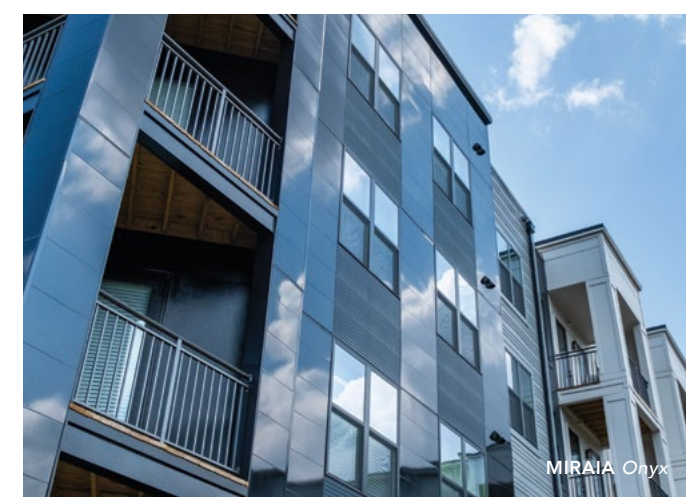


MIRAIA Snow

Showstopping exteriors.

Elevated, contemporary style with Nichiha's superior performance to match—that's the hallmark of our Designer Series featuring Illumination and Miraia.

High-design projects require luxe, head-turning cladding like Miraia. The only product of its kind in the fiber cement market, Miraia offers a reflective, high-gloss finish, perfect for design accents or an affordable alternative to metal. Miraia is available in three stunning colors—Snow, Glacier and Onyx.



MIRAIA Onyx



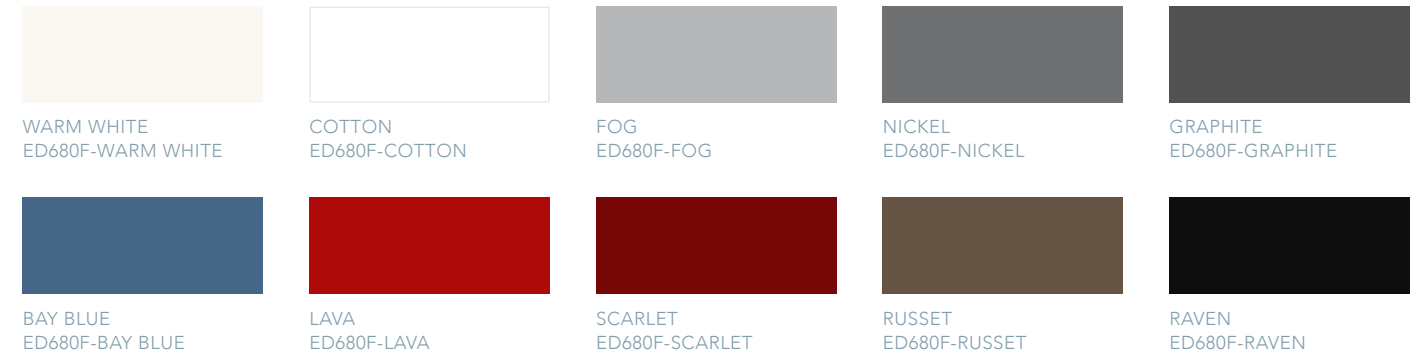
MIRAIA Snow



ILLUMINATION™ - CUSTOM COLOR

Using our Color Xpressions system, Illumination panels are available in virtually any color you can imagine. They are available in 6-foot and 10-foot panels for maximum design flexibility.

STOCK ILLUMINATION™ - AVAILABLE IN AWP1818 ONLY



ILLUMINATION SPECS

	AWP 1818*	AWP 3030
DIMENSIONS (ACTUAL MM)	17-7/8" H x 71-9/16" L (455MM H x 1818MM L)	17-7/8" H x 119-5/16" L (455MM H x 3030MM L)
THICKNESS (ACTUAL MM)	5/8" (16MM)	5/8" (16MM)
WEIGHT (LBS. PER PANEL)	35.2	57.2
WEIGHT (LBS. PER SQ. FT.)	3.9	3.8
EXPOSED COVERAGE (SQ. FT. PER PANEL)	8.88 SQ. FT.	14.81 SQ. FT.
PACKAGING (PIECES PER PACK)	2 [17.76 SQ. FT.]	2 [29.62 SQ. FT.]

*NOTE: Stock Illumination panels are only available in AWP1818.

 AWP 1818 CAN ONLY BE INSTALLED HORIZONTALLY.

 AWP 3030 CAN BE INSTALLED HORIZONTALLY OR VERTICALLY.

Polished sophistication in color.

With its satin finish, ease of installation and virtually limitless color palette, Illumination provides significantly more value than traditional aluminum composite and phenolic panels.

Our Illumination architectural wall panels add dimension and visual interest to any project, but its 10-week lead time can sometimes be a deterrent. To better serve our customers we introduced a Stock Illumination program, which offers a selection of our most popular colors with the standard 5-day lead time. All our stocked Illumination products include matching trim pieces to add the finishing touches to your projects.





Create depth and intrigue with THE DIMENSION SERIES

Color. Texture. Depth. It's design complexity made simple.

Don't settle for a single, flat look when the Dimension Series lets you add depth, texture and color to your designs. Our multi-dimensional Ribbed™ and Novenary panels bring visual interest to smooth surfaces, like glass or metal, with recessed reveals and striking shadow lines. An additional element, like color, is the perfect way to add another layer of depth and intrigue. The Dimension Series gives you the design flexibility you desire to bring walls to life.

RIBBED



IVORY



INDIGO

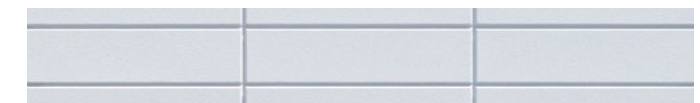
CUSTOM HUES MEET MODERN DESIGN
With Color Xpressions, Ribbed panels are available in an array of custom colors. Learn more on page 6.

Custom color and texture are often used to create depth to make small spaces seem larger. However, even large areas can benefit from these techniques to give flat designs more visual interest.

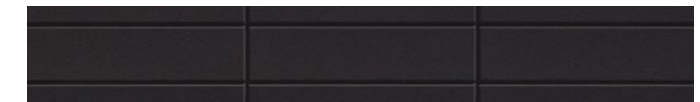
RIBBED SPECS	AWP 3030
DIMENSIONS (ACTUAL MM)	17-7/8" H x 119-5/16" L (455MM H x 3030MM L)
THICKNESS (ACTUAL MM)	5/8" (16MM)
WEIGHT (LBS. PER PANEL)	57.3
WEIGHT (LBS. PER SQ. FT.)	3.8
EXPOSED COVERAGE (SQ. FT. PER PANEL)	14.81 SQ. FT.
PACKAGING (PIECES PER PACK)	2 [29.62 SQ. FT.]

 AWP 3030 CAN BE INSTALLED HORIZONTALLY OR VERTICALLY.

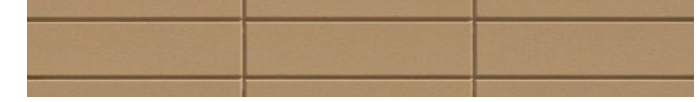
NOVENARY



OPAL



SLATE



SAND



OCHRE



CLAY

NOVENARY SPECS	AWP 1818
DIMENSIONS (ACTUAL MM)	17-7/8" H x 71-9/16" L (455MM H x 1818MM L)
THICKNESS (ACTUAL MM)	7/8" (21MM)
TILE SIZE	5-3/8" H x 23-1/4" L
WEIGHT (LBS. PER PANEL)	47.84
EXPOSED COVERAGE (SQ. FT. PER PANEL)	8.88 SQ. FT.
PACKAGING (PIECES PER PACK)	2 [17.76 SQ. FT.]

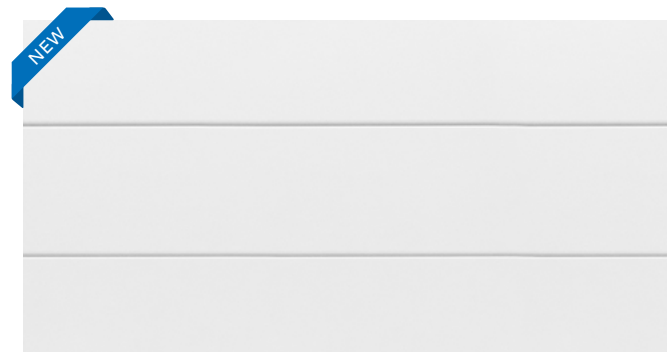
 AWP 1818 CAN ONLY BE INSTALLED HORIZONTALLY.



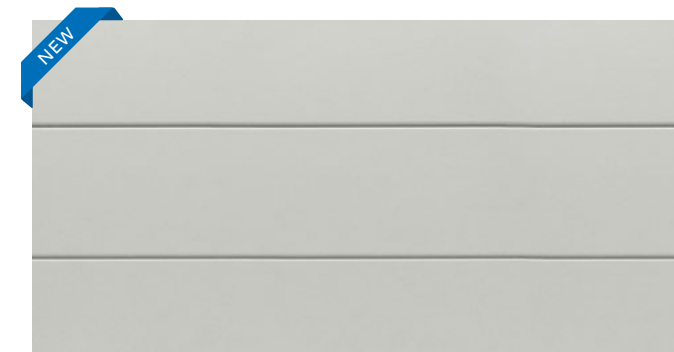


LATURA V-GROOVE *White* | SIERRA PREMIUM SHAKE *Smoke*

LATURA V-GROOVE  - COMING SUMMER 2022



WHITE



GRAY



CUSTOM HUES MEET MODERN DESIGN

With Color Xpressions, Latura V-Groove panels are available in an array of custom colors. Learn more on page 6.

LATURA V-GROOVE SPECS

AWP 1818

AWP 3030

DIMENSIONS (ACTUAL MM)	17-7/8" H x 71-9/16" L (455MM H x 1818MM L)	17-7/8" H x 119-5/16" L (455MM H x 3030MM L)
THICKNESS (ACTUAL MM)	5/8" (16MM)	5/8" (16MM)
WEIGHT (LBS. PER PANEL)	40.35	65.25
WEIGHT (LBS. PER SQ. FT.)	4.54	4.41
EXPOSED COVERAGE (SQ. FT. PER PANEL)	8.88 SQ. FT.	14.81 SQ. FT.
PACKAGING (PIECES PER PACK)	2 [17.76 SQ. FT.]	2 [29.62 SQ. FT.]

 AWP 1818 CAN ONLY BE INSTALLED HORIZONTALLY.

 AWP 3030 CAN BE INSTALLED HORIZONTALLY OR VERTICALLY.

Pushing the boundaries of lap siding.

Latura V-Groove gives you the classic look of lap siding with the modern performance of our Architectural Wall Panels. The ultra-durable fiber cement panels are resistant to fire, wind, pests and rot, easy to maintain, and have an integrated rainscreen system that offers protection from water intrusion and moisture damage. Latura V-Groove features a sophisticated look with deep shadow lines that are perfect for custom homes or multifamily projects alike.



LATURA V-GROOVE *Custom Color*



LATURA V-GROOVE *White & Custom Color*



THE MODERN SERIES

Take modern to the next level with distinct textures and tones.

The clean, modular look of the Modern Series is a versatile choice for residential projects. The stylish tones and subtle seams are the perfect partner for gleaming glass and stainless steel. If you're looking for a modern contrast, the cool hues glow when paired with the warmth of wood. This series offers two distinct textures to ensure you find the perfect fit. ArchitecturalBlock™ is a handsome, durable and cost-effective solution. The ease of installation and wide variety of corner options make it as popular with contractors as it is with clients.

Its partner product, TuffBlock,™ offers many of the same features as ArchitecturalBlock but takes urban to the next level with a tough, textured finish. TuffBlock is built to last with construction that stands up to everyday use and can also be customized in virtually any color with our Color Xpressions system.

ARCHITECTURALBLOCK



MOCHA



GRAY

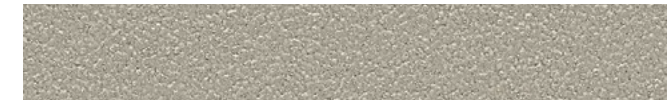


TUSCAN

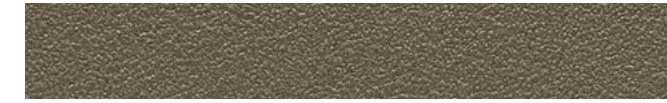
TUFFBLOCK



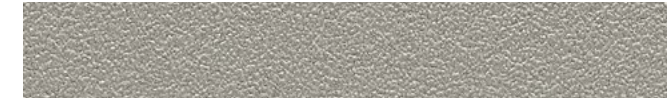
STEEL



BAMBOO



WALNUT



PEWTER

ARCHITECTURALBLOCK SPECS


AWP 1818

DIMENSIONS (ACTUAL MM)	17-7/8" H x 71-9/16" L (455MM H x 1818MM L)
THICKNESS (ACTUAL MM)	5/8" (16MM)
WEIGHT (LBS. PER PANEL)	35.2
WEIGHT (LBS. PER SQ. FT.)	3.9
EXPOSED COVERAGE (SQ. FT. PER PANEL)	8.88 SQ. FT.
PACKAGING (PIECES PER PACK)	2 [17.76 SQ. FT.]

TUFFBLOCK SPECS

AWP 1818

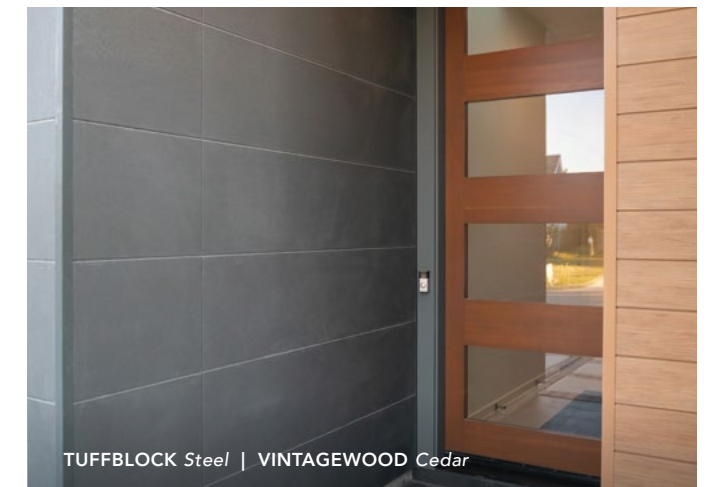
DIMENSIONS (ACTUAL MM)	17-7/8" H x 71-9/16" L (455MM H x 1818MM L)
THICKNESS (ACTUAL MM)	5/8" (16MM)
WEIGHT (LBS. PER PANEL)	35.2
WEIGHT (LBS. PER SQ. FT.)	3.9
EXPOSED COVERAGE (SQ. FT. PER PANEL)	8.88 SQ. FT.
PACKAGING (PIECES PER PACK)	2 [17.76 SQ. FT.]



CUSTOM HUES MEET MODERN DESIGN
With Color Xpressions, TuffBlock is available in an array of custom colors. Learn more on page 6.



ARCHITECTURALBLOCK Gray



TUFFBLOCK Steel | VINTAGEWOOD Cedar



THE WOOD SERIES

VINTAGEWOOD Bark

Get the natural look of wood with unmatched durability.

With 11 varieties of style and color, the Wood Series is our largest and most popular product line. Built to last, our VintageWood,™ RoughSawn,™ RiftSawn™ and Natura panels offer the rich textures of wood while providing color stability and withstanding extreme weather elements.

VintageWood exudes modern refinement and works well in both modern and vintage designs. Available in five colors — Bark, Cedar, Redwood, Ash and Spruce — VintageWood pairs perfectly with glass, metal and block panels, adding a touch of warmth to the coolness of these materials. And because VintageWood can be installed vertically or horizontally, it offers a wide range of design options.

VINTAGEWOOD



BARK



ASH



CEDAR



SPRUCE



REDWOOD



DESIGN TIP

Achieve the organic staggered look you love with our VintageWood 1818 panels, measuring nearly 6 feet in length.

VINTAGEWOOD SPECS

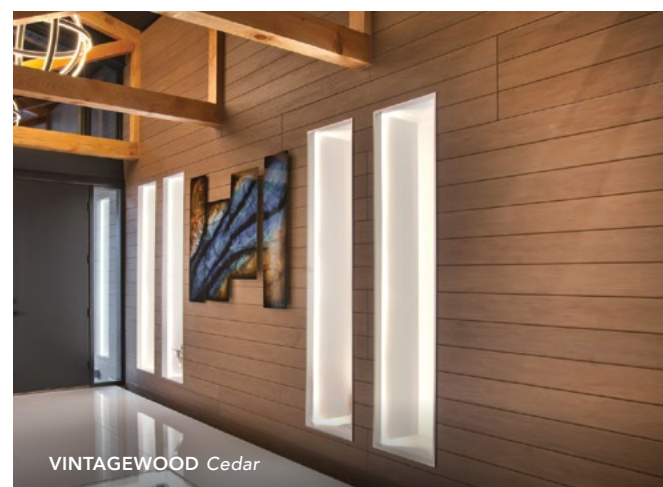
AWP 1818

AWP 3030

DIMENSIONS (ACTUAL MM)	17-7/8" H x 71-9/16" L (455MM H x 1818MM L)	17-7/8" H x 119-5/16" L (455MM H x 3030MM L)
THICKNESS (ACTUAL MM)	5/8" (16MM)	5/8" (16MM)
WEIGHT (LBS. PER PANEL)	34.8	57.3
WEIGHT (LBS. PER SQ. FT.)	3.9	3.8
EXPOSED COVERAGE (SQ. FT. PER PANEL)	8.88 SQ. FT.	14.81 SQ. FT.
PACKAGING (PIECES PER PACK)	2 [17.76 SQ. FT.]	2 [29.62 SQ. FT.]

 AWP 1818 CAN ONLY BE INSTALLED HORIZONTALLY.

 AWP 3030 CAN BE INSTALLED HORIZONTALLY OR VERTICALLY.



VINTAGEWOOD Cedar



VINTAGEWOOD Ash



RIFTSAWN Pecan | TUFFBLOCK Steel | INDUSTRIALBLOCK

Add rustic sophistication with RoughSawn and RiftSawn.

Nichiha's Wood Series provides the look of wood without the drawbacks of natural wood cladding. With its earthy appeal and rich texture, RiftSawn and RoughSawn™ add a rustic quality to all types of projects. They showcase the ridges, grooves and textures of natural wood while maintaining a consistent length that is easy to work with. RiftSawn is unique in the Wood Series with its full panel design, which incorporates a darker edge to create the look of a reveal. This provides the appearance of an open joint system with the added performance of a closed joint system.

Like VintageWood, these products also pair well with glass, metal, and block panels. And when it comes to installation, hidden fasteners provide a clean and beautiful look that works for exterior and interior applications. Nichiha gives you the perfect match — the beauty of wood backed by the brawn of fiber cement.

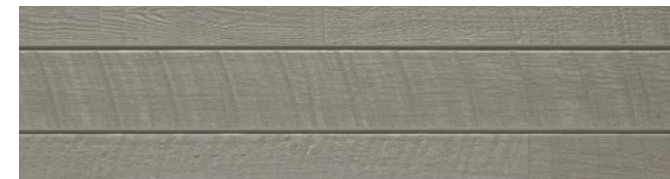
ROUGHSAWN



ESPRESSO



TOBACCO



SMOKE

ROUGHSAWN SPECS

	AWP 3030
DIMENSIONS (ACTUAL MM)	17-7/8" H x 119-5/16" L (455MM H x 3030MM L)
THICKNESS (ACTUAL MM)	5/8" (16MM)
WEIGHT (LBS. PER PANEL)	57.3
WEIGHT (LBS. PER SQ. FT.)	3.8
EXPOSED COVERAGE (SQ. FT. PER PANEL)	14.81 SQ. FT.
PACKAGING (PIECES PER PACK)	2 [29.62 SQ. FT.]

 AWP 3030 CAN BE INSTALLED HORIZONTALLY OR VERTICALLY.



ROUGHSAWN Tobacco

RIFTSAWN



PECAN



CHESTNUT

RIFTSAWN SPECS

	AWP 1818
DIMENSIONS (ACTUAL MM)	17-7/8" H x 71-9/16" L (455MM H x 1818MM L)
THICKNESS (ACTUAL MM)	3/4" (18MM)
WEIGHT (LBS. PER PANEL)	41.6
WEIGHT (LBS. PER SQ. FT.)	4.7
EXPOSED COVERAGE (SQ. FT. PER PANEL)	8.88 SQ. FT.
PACKAGING (PIECES PER PACK)	2 [17.76 SQ. FT.]

 AWP 1818 CAN ONLY BE INSTALLED HORIZONTALLY.



ROUGHSAWN Smoke



NATURA Rustic White | LATURA V-GROOVE White

NATURA

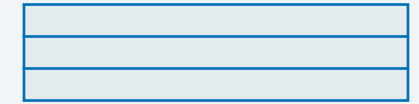


RUSTIC WHITE

NATURA SPECS	AWP 1818
DIMENSIONS (ACTUAL MM)	17-7/8" H x 71-9/16" L (455MM H x 1818MM L)
THICKNESS (ACTUAL MM)	5/8" (16MM)
WEIGHT (LBS. PER PANEL)	40.02
WEIGHT (LBS. PER SQ. FT.)	4.55
EXPOSED COVERAGE (SQ. FT. PER PANEL)	8.88 SQ. FT.
PACKAGING (PIECES PER PACK)	2 [17.76 SQ. FT.]

AT A GLANCE

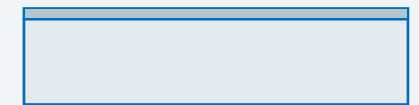
Here's a look at the differences between our Wood Series products.



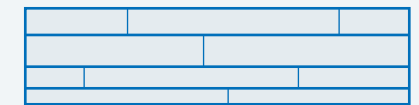
VINTAGEWOOD | AWP1818 & AWP3030
Three planks, full width of panel



ROUGHSAWN | AWP3030 only
Four planks, consistent heights but staggered horizontally



RIFTSAWN | AWP1818 only
One plank with a darker reveal at the top



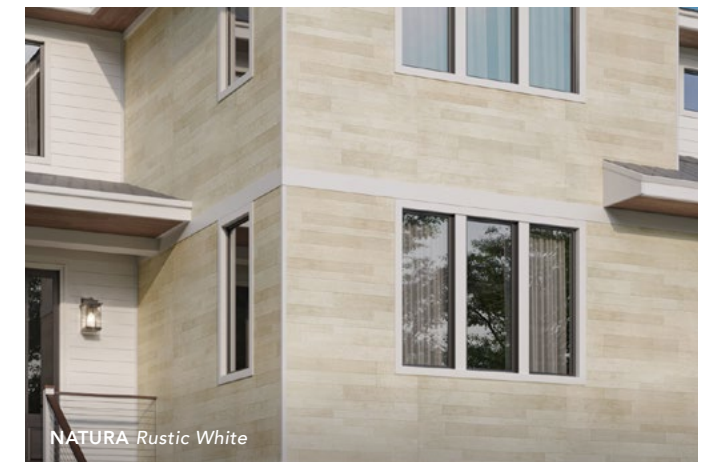
NATURA | AWP1818 only
Four planks, varied heights and staggered horizontally

Enjoy the beauty of wood without the limitations.

Adopting its texture from the natural grooves of wood, Natura provides organic yet elegant elements for both residential and commercial designs. Natura comes in the color Rustic White which layers creamy white and tan tones reminiscent of driftwood. Its pattern is unique in the Wood Series, with each panel showcasing four planks of varying heights and a staggered horizontal pattern. With Natura you can enjoy the same benefits as any of our architectural wall panels—easy installation, ultra-durability and resistance to fire, wind and pests.



NATURA Rustic White | LATURA V-GROOVE White



NATURA Rustic White



THE CONCRETE SERIES

EMPIREBLOCK

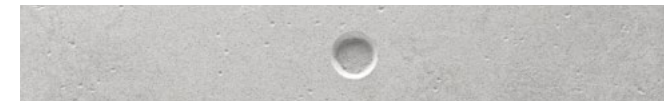
Taking concrete to unexpected places.

Designed to mimic the natural textures of concrete, our light-weight panels offer distinct facades to fit your creative vision, without the curing time, cracking or color inconsistency associated with real concrete.

IndustrialBlock offers a distressed look, while EmpireBlock features a unique dimple that ups the industrial chic, and Corbosa evokes the look of wet concrete.

Our AWP3030 panels — IndustrialBlock and EmpireBlock — can be installed vertically and horizontally, covering approximately 15 square feet per panel, and have the durability you've come to expect from Nichiha. Corbosa can only be installed horizontally.

EMPIREBLOCK



EMPIREBLOCK SPECS & INDUSTRIALBLOCK SPECS

DIMENSIONS (ACTUAL MM)

THICKNESS (ACTUAL MM)

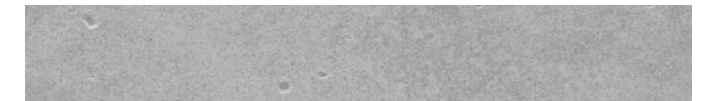
WEIGHT (LBS. PER PANEL)

WEIGHT (LBS. PER SQ. FT.)

EXPOSED COVERAGE (SQ. FT. PER PANEL)

PACKAGING (PIECES PER PACK)

INDUSTRIALBLOCK



AWP 3030

17-7/8" H x 119-5/16" L
(455MM H x 3030MM L)

5/8" (16MM)

57.3

3.8

14.81 SQ. FT.

2 [29.62 SQ. FT.]

 AWP 3030 CAN BE INSTALLED HORIZONTALLY OR VERTICALLY.

CORBOSA - AVAILABLE SPRING 2022



MOONDUST



SHADOW

CORBOSA SPECS

AWP 1818

DIMENSIONS (ACTUAL MM)

17-7/8" H x 71-9/16" L
(455MM H x 1818MM L)

THICKNESS (ACTUAL MM)

5/8" (16MM)

WEIGHT (LBS. PER PANEL)

40

WEIGHT (LBS. PER SQ. FT.)

4.5

EXPOSED COVERAGE (SQ. FT. PER PANEL)

8.88 SQ. FT.

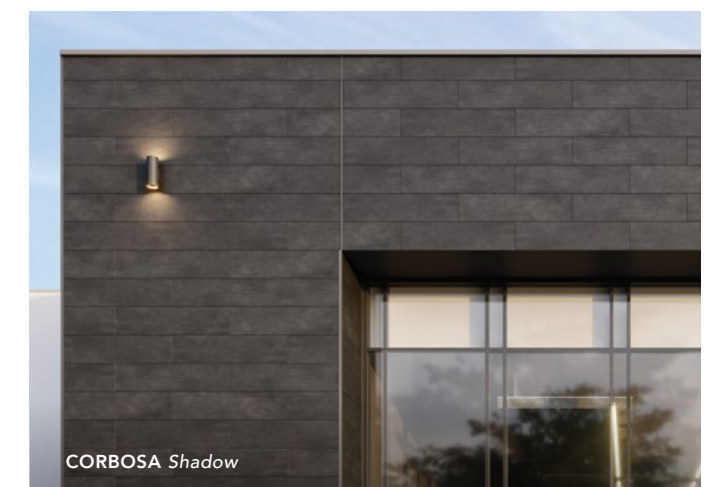
PACKAGING (PIECES PER PACK)

2 [17.76 SQ. FT.]

 AWP 1818 CAN ONLY BE INSTALLED HORIZONTALLY.



INDUSTRIALBLOCK



CORBOSA Shadow



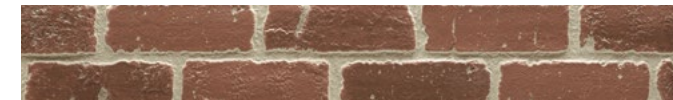
THE BRICK SERIES

PLYMOUTHBRICK

Get a timeless brick finish without the traditional hassle.

The slight variations in color, the stately good looks, the grout lines — it's all there in the Nichiha Brick Series. Thanks to a proprietary multi-layered coating process, the beauty of brick is built to last in these fiber cement panels. With five finishes, you have the freedom to create the brick building of your choice without the extra cost or hassle associated with traditional masonry. These panels really do have it all; however, we did leave out the tons of weight and the extra time required to see your project to completion.

VINTAGEBRICK™



ALEXANDRIA BUFF



WHITE WASH

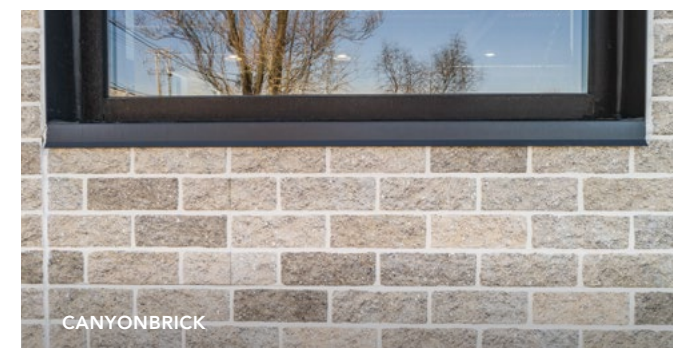
VINTAGEBRICK SPECS	AWP 1818
DIMENSIONS (ACTUAL MM)	17-7/8" H x 71-9/16" L (455 MM H x 1818 MM L)
THICKNESS (ACTUAL MM)	3/4" (18 MM)
WEIGHT (LBS. PER PANEL)	39.6
WEIGHT (LBS. PER SQ. FT.)	4.4
EXPOSED COVERAGE (SQ. FT. PER PANEL)	8.88 SQ. FT.
PACKAGING (PIECES PER PACK)	2 [17.76 SQ. FT.]

CANYONBRICK™



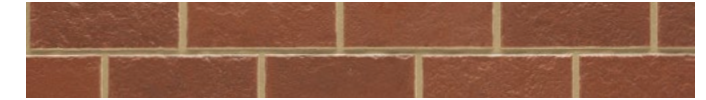
SHALE BROWN

CANYONBRICK SPECS	AWP 1818
DIMENSIONS (ACTUAL MM)	17-7/8" H x 71-9/16" L (455 MM H x 1818 MM L)
THICKNESS (ACTUAL MM)	5/8" (16 MM)
WEIGHT (LBS. PER PANEL)	35.2
WEIGHT (LBS. PER SQ. FT.)	3.9
EXPOSED COVERAGE (SQ. FT. PER PANEL)	8.88 SQ. FT.
PACKAGING (PIECES PER PACK)	2 [17.76 SQ. FT.]



CANYONBRICK

PLYMOUTHBRICK™

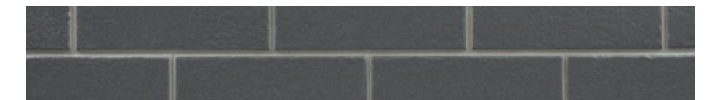


CRIMSON

Get the classic look of kiln-fired brick with the modern strength of PlymouthBrick panels.

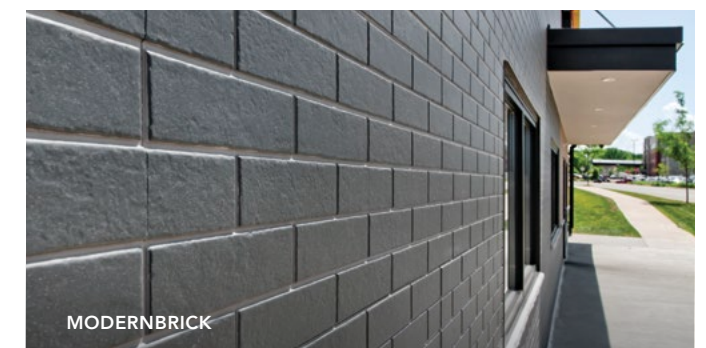
PLYMOUTHBRICK SPECS	AWP 1818
DIMENSIONS (ACTUAL MM)	17-7/8" H x 71-9/16" L (455 MM H x 1818 MM L)
THICKNESS (ACTUAL MM)	5/8" (16 MM)
WEIGHT (LBS. PER PANEL)	35.2
WEIGHT (LBS. PER SQ. FT.)	3.9
EXPOSED COVERAGE (SQ. FT. PER PANEL)	8.88 SQ. FT.
PACKAGING (PIECES PER PACK)	2 [17.76 SQ. FT.]

MODERNBRICK™



MIDNIGHT

MODERNBRICK SPECS	AWP 1818
DIMENSIONS (ACTUAL MM)	17-7/8" H x 71-9/16" L (455 MM H x 1818 MM L)
THICKNESS (ACTUAL MM)	5/8" (16 MM)
WEIGHT (LBS. PER PANEL)	36.6
WEIGHT (LBS. PER SQ. FT.)	4.1
EXPOSED COVERAGE (SQ. FT. PER PANEL)	8.88 SQ. FT.
PACKAGING (PIECES PER PACK)	2 [17.76 SQ. FT.]



MODERNBRICK



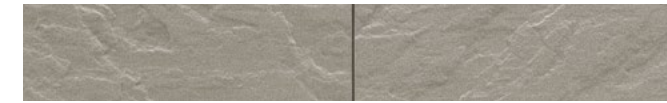
THE MASONRY SERIES

Get the beauty of stone for a fraction of the price.

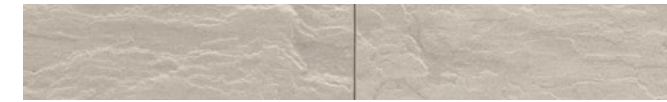
Nichiha's Masonry Series makes grandeur attainable for every situation. Offering a distinct finish, this series of stone panels is as elegant as it is affordable.

With its subtle color and deep texture, our SandStone™ captures the look of limestone and adds a traditional design aesthetic to any commercial building. Covering approximately 9 square feet per panel, this finish goes up in a fraction of the time required by a crew of masonry contractors. Plus, with three color options, you have even more possibilities for customization — all backed by the power of fiber cement.

SANDSTONE



AUTUMN BROWN



DESERT BEIGE



GENTLE GRAY

SANDSTONE SPECS

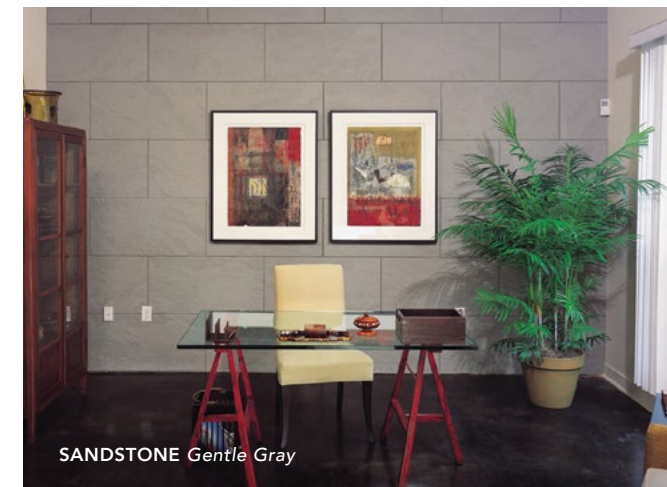
AWP 1818

DIMENSIONS (ACTUAL MM)	17-7/8" H x 71-9/16" L (455MM H x 1818MM L)
THICKNESS (ACTUAL MM)	3/4" (18MM)
WEIGHT (LBS. PER PANEL)	39.68
WEIGHT (LBS. PER SQ. FT.)	4.41
EXPOSED COVERAGE (SQ. FT. PER PANEL)	8.88 SQ. FT.
PACKAGING (PIECES PER PACK)	2 [17.76 SQ. FT.]

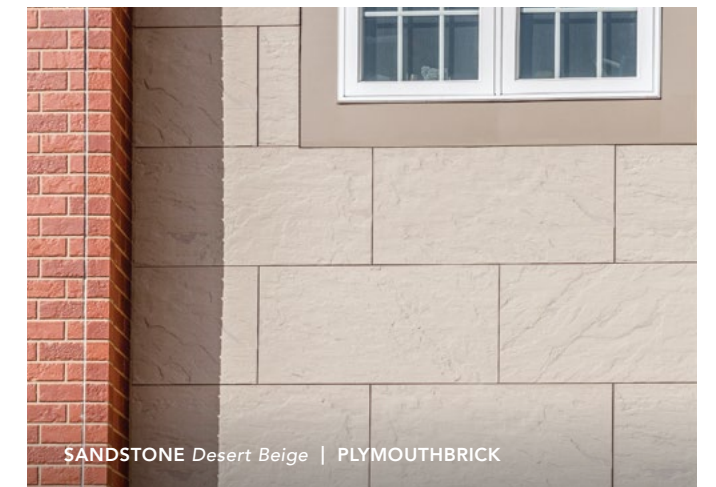


NO MORTAR, NO MESS

Prefinished panels eliminate the need for messy mortar or costly masonry-skilled labor, while still providing a textured finish and enduring design aesthetic.



SANDSTONE Gentle Gray



SANDSTONE Desert Beige | PLYMOUTHBRICK

ESSENTIAL FLASHING

Create a clean, polished look for your building with the highest level of precision.



COMPRESSION JOINT FLASHING (10')

Used in conjunction with Ultimate Horizontal/Vertical Starter Tracks at floor joists in buildings that require compression joints. Can be painted or powder coated to match panels.

THICKNESS	10MM
PACKAGING (LN. FT. PER TUBE)	50



OVERHANG FLASHING (10') - JOH7288

Used at the base of overhangs, bump-outs or porte-cochères.

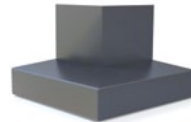
THICKNESS	10MM
PACKAGING (LN. FT. PER BOX)	40



OVERHANG FLASHING INSIDE CORNER - JOH7288D

Used in conjunction with Overhang Flashing at inside corners.

THICKNESS	10MM
PACKAGING (PCS PER PACK)	2



OVERHANG FLASHING OUTSIDE CORNER - JOH7288B

Used in conjunction with Overhang Flashing at outside corners.

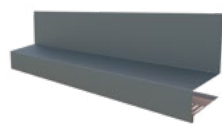
THICKNESS	10MM
PACKAGING (PCS PER PACK)	2



OVERHANG FLASHING CLIP - JOH7288S

Placed at seams where Overhang Flashing and corners meet.

THICKNESS	10MM
PACKAGING (PCS PER PACK)	1



STARTER FLASHING (10') - FTD4788

Used in conjunction with the Ultimate Horizontal/Vertical Starter Tracks at the bottom of a building.

THICKNESS	10MM
PACKAGING (LN. FT. PER BOX)	50



STARTER FLASHING OUTSIDE CORNER - FTD4788B

Used in conjunction with Starter Flashing at outside corners.

THICKNESS	10MM
PACKAGING (PCS PER PACK)	4



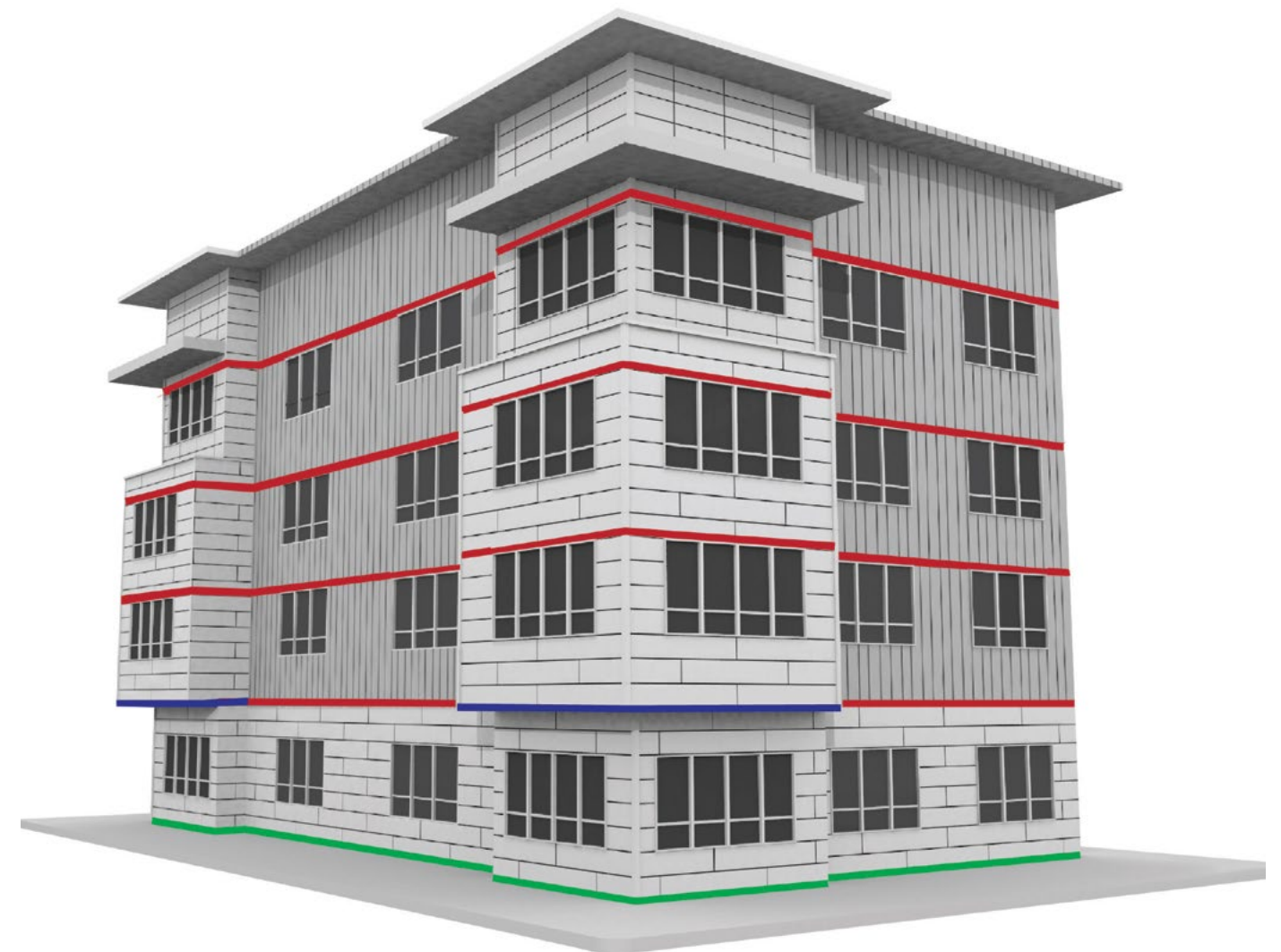
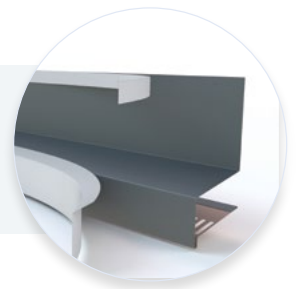
STARTER FLASHING INSIDE CORNER - FTD4788D

Used in conjunction with Starter Flashing at inside corners.

THICKNESS	10MM
PACKAGING (PCS PER PACK)	4

NOTES: EACH COMPONENT OF ESSENTIAL FLASHING IS SOLD SEPARATELY; STARTER AND OVERHANG FLASHING IS AVAILABLE IN BLACK ONLY.

Nichiha takes accessory protection to the next level with a **removable film layer**. Once installed, simply peel off the film to reveal blemish-free fixtures.



Our starter flashing serves a dual role — ensuring your project is polished to perfection and operating as a bug screen to keep annoying pests away.

INSTALLATION HARDWARE

Easily take your vision from the drawing board to reality.



ULTIMATE CLIP II WITH JOINT TAB ATTACHMENT - JEL778* & JEL788**

Creates a hidden fastening system that all but eliminates face fastening. The joint tab helps support panel lateral stability.

THICKNESS	10MM
PACKAGING (PCS PER BOX)	30



ULTIMATE HORIZONTAL STARTER TRACK (10') - FA700

Ensures a fast, level installation. Its patented drainage channel directs water out and away from the base of the wall.

THICKNESS	10MM
PACKAGING (LN. FT. PER BOX)	100



ULTIMATE VERTICAL STARTER TRACK (10') - FA710T

Ensures a fast, level installation with 3030 panels. Its patented drainage channel directs water out and away from the base of the wall.

THICKNESS	10MM
PACKAGING (LN. FT. PER BOX)	100



SINGLE FLANGE SEALANT BACKER (6.5') - FHK1015R

Used for vertical jambs at doors and windows and at inside corners of the building.

THICKNESS	10MM
PACKAGING (LN. FT. PER BOX)	65



DOUBLE FLANGE SEALANT BACKER (10') - FH1015R

Used for vertical expansion joints. Placed at the end of each 3030 panel, and every 30' with 1818 panels and with the preformed outside corner.

THICKNESS	10MM
PACKAGING (LN. FT. PER BOX)	100



CORRUGATED SHIM (4') - FS1005 & FS1010

Used for face fastening where required (top of building, doors, windows, etc.)

THICKNESS (FS1005)	5MM
THICKNESS (FS1010)	10MM
PACKAGING (LN. FT. PER BOX)	200



CORNER CLIP - JE777C* & JE787C**

Corner clip for the preformed Nichiha fiber cement corners.

THICKNESS	10MM
PACKAGING (PCS PER BOX)	6



CORNERS

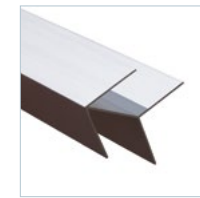
Prefinished corners are used in conjunction with horizontal panel installation.

17 7/8"H x 3-1/2" [face]
1818MM H x 88.9MM [face]

*JEL778 and JE777C are compatible with all panels except SandStone and VintageBrick.
**JEL788 and JE787C are compatible with SandStone and VintageBrick only.

METAL TRIM

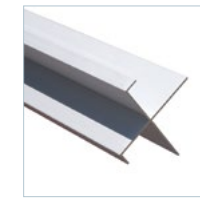
With our customized metal trim, your project practically finishes itself.



CORNER KEY

Extrusion used at outside corners instead of a preformed corner. A vertical expansion joint is required 2' to 10' from the corner when using this corner.

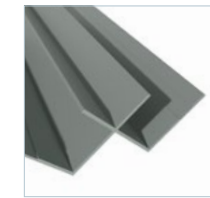
DIMENSIONS (NOM. FT. ~ ACTUAL MM)	3" x 10' (76.2MM x 3030MM)
PACKAGING (LN. FT. PER TUBE)	50



OPEN OUTSIDE CORNER

Extrusion used at outside corners instead of a preformed corner. A vertical expansion joint is required 2' to 12' from the corner when using this corner.

DIMENSIONS (NOM. FT. ~ ACTUAL MM)	2.96" x 10' (75MM x 3030MM)
PACKAGING (LN. FT. PER TUBE)	50



INSIDE CORNER

Used where two Nichiha panels meets in an inside corner; alternative to Single Flange Sealant Backer with sealant.

DIMENSIONS (NOM. FT. ~ ACTUAL MM)	3.4" x 10' (86.4MM x 3030MM)
PACKAGING (LN. FT. PER TUBE)	50



H-MOLD

Can be used at the end of 3030 panels instead of the Double Flange Sealant Backer, but not at the preformed outside corners.

DIMENSIONS (NOM. FT. ~ ACTUAL MM)	2" x 10' (50.8MM x 3030MM)
PACKAGING (LN. FT. PER TUBE)	50



J-MOLD

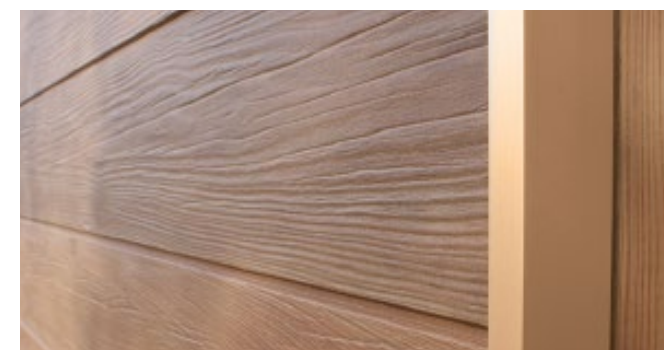
Can be used instead of Single Flange Sealant Backer at vertical jambs for doors and windows, but not at the inside corners of the building.

DIMENSIONS (NOM. FT. ~ ACTUAL MM)	0.375" x 10' (9.5MM x 3030MM)
PACKAGING (LN. FT. PER TUBE)	50



Our trim gives you options

All of our metal trim is available in four finishes: primed, clear anodized, powder coated, or custom color. For pricing and lead times, view our Price Catalog at nichiha.com/price-catalog.



For popular panels like VintageWood, we've made ordering easier by color matching all of our trim profiles to have in stock for fast delivery.



Thanks to our Color Xpressions system, Nichiha can customize trim to match any color you use on custom color panels.



Behind our Architectural Wall Panels is SOME SERIOUS TECHNOLOGY.

EASY INSTALLATION

Time-saving clip installation system that reduces construction time and minimizes mistakes.



NO MORTAR, NO MESS

Prefinished panels eliminate the need for messy mortar or costly masonry-skilled labor.



ANY WEATHER PRODUCT

Products can be installed year round in any climate across the country. No geographical restrictions means more possibilities.



LOW MAINTENANCE

No-fuss products. Little ongoing cleaning or regular maintenance needed. Bring your vision to life and ensure it looks great for years to come.

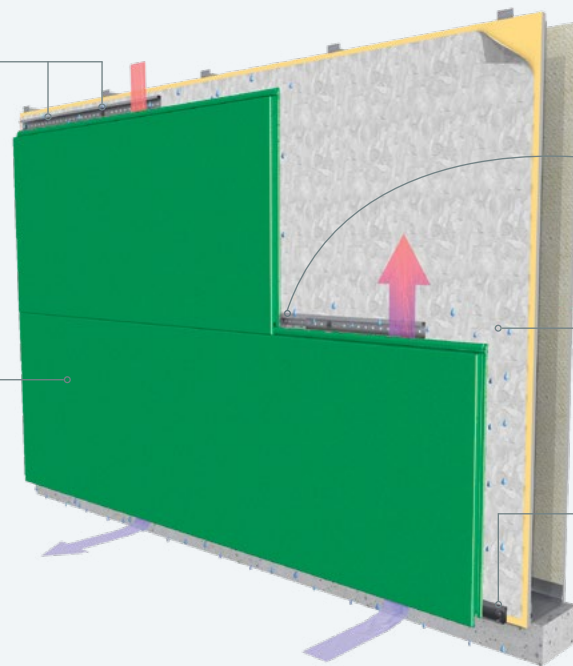


ENGINEERED FOR PERFORMANCE

Go beyond our durable panels and discover a meticulously engineered moisture management system that provides a vertical drainage point for air and moisture to exit.

THE ULTIMATE CLIP creates a hidden fastening system that all but eliminates face fastening. Installation is quick and easy and never requires specialty subcontractors.

NICHIHA ARCHITECTURAL WALL PANELS are lightweight, easy to handle and available in a virtually endless color palette and a diverse offering of textural finishes.



NICHIHA'S JOINT TAB ATTACHMENT is designed to support panel lateral stability, helping vertical joints stay tightly closed. The tab fits in place easily and is fastened to the Ultimate Clip with provided screw.

DRAINED AND BACK-VENTILATED RAINSCREEN design allows water to escape and air to circulate, reducing the risk of mold and water damage inside the building.

THE ULTIMATE STARTER TRACK pulls double-duty. It ensures a fast, level installation, and its patented drainage channel directs water out and away from the base of the wall.

Never underestimate the power of REALLY GOOD TOOLS.

Whether you are an architect, contractor, installer or builder, Nichiha ensures that you have all the information you need to make your project go as smoothly as possible. The way we see it, we are partners. Our website offers a comprehensive collection of technical information, installation videos, architectural details, in-depth specifications and everything you'll ever need to know about installing Nichiha products.



DESIGN REVIEW GUIDE

Download our quick reference guide to get an overview on our Architectural Wall Panels.

nichiha.com/docs/nichiha-design-review-guide.pdf



INSTALL DOCUMENTATION

Take an even deeper dive and download our in-depth installation guides.

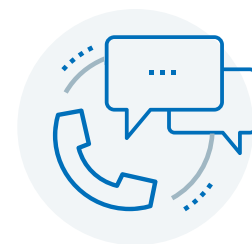
nichiha.com/resource-center/install-support



INSTALL VIDEOS

Watch our installation instructions come to life — check out our installation videos today!

nichiha.com/resource-center/install-support



SUPPORT

Our in-house technical team is here to assist. If you have questions, comments or concerns, call or email us.

1.866.424.4421 or technicalservices@nichiha.com

THE POWER OF POSSIBILITIES

At Nichiha USA we value genuine relationships, bold ideas and a willingness to evolve into a better version of ourselves as we create better spaces for all to enjoy. Our visually stunning, high-performing building materials and incomparable service to our partners may set us apart, but we are proud to be a part of a global, vibrant building community.

Nichiha USA is a subsidiary of Nichiha Corporation. Founded in Japan in 1956, Nichiha now has over 2800 employees in 13 locations worldwide. As we continue to grow, we keep our overarching goal in mind: Building a Better Human Environment. Learn more about our global presence at: nichiha.co.jp/global.

NICHIHA WARRANTIES

- ARCHITECTURAL WALL PANELS
15-year limited warranty* on panels
15-year limited warranty* on finish
- METAL TRIM
TAMLYN warrants defective-free products for a period of 10 years for the original purchaser. Please visit tamlyn.com for detailed information on terms, conditions and limitations.

*See Nichiha warranties for detailed information on terms, conditions and limitations. Visit nichiha.com for easy downloadable warranties or call toll-free 1.866.424.4421 for a copy.

Nichiha MSDS is available at nichiha.com, at your local Nichiha dealer or call Nichiha direct, toll-free 1.866.424.4421.

CERTIFICATION & TESTING



CCRR-0299



Report
No. EC-58



Canada CCMC
14366-R



Report
No. FL12875
No. FL12812



NOA 21-0312.11



WUI 8140-2029



RR 26081



SILICA DUST WARNING: Nichiha products may contain some amounts of crystalline silica [a.k.a. sand, silicon dioxide], which is a naturally occurring mineral. The amount will vary from product to product. Inhalation of crystalline silica into the lungs and repeated exposure to silica can cause health disorders, such as silicosis, lung cancer, or death depending upon various factors. To be conservative, Nichiha recommends that whenever cutting, sawing, sanding, sniping or abrading the product, users observe Safety Instructions. For further information or questions, please consult the MSDS, your employer, or visit osha.gov/SLTC/silicacrystalline/index.html and cdc.gov/niosh/topics/silica. The MSDS for Nichiha products are available at nichiha.com, at your local Nichiha dealer or through Nichiha directly at 1.866.424.4421. FAILURE TO ADHERE TO OUR WARNINGS, MSDS, AND OTHER INSTRUCTION MAY LEAD TO SERIOUS PERSONAL INJURY OR DEATH.

ARCHITECTURALBLOCK, CANYONBRICK, EMPIREBLOCK, ILLUMINATION, INDUSTRIALBLOCK, KURASTONE, PLYMOUTHBRICK, MIRAI, RIBBED, ROUGHSAWN, SANDSTONE, TUFFBLOCK, THE POWER OF POSSIBILITIES, VINTAGEBRICK and VINTAGEWOOD are trademarks of Nichiha USA, Inc.

6465 E. JOHNS CROSSING, SUITE 250, JOHNS CREEK, GA 30097 | 866.424.4421 | NICHIHA.COM

NOTE: Printed material may not accurately depict actual product color. Project images are for visualization only.

©2022 Nichiha USA, Inc. All rights reserved. Digital version 08.31.22