

Delivering the Power of
POSSIBILITIES



ARCHITECTURAL WALL PANELS

National Brands Full Line Catalog



VINTAGEWOOD | ILLUMINATION

WE'RE LOOKING FORWARD.

At Nichiha, we think the future is bright.

Your projects come in all shapes, styles and markets. That's why Nichiha is dedicated to helping you build the perfect structure for you, clad in our Architectural Wall Panels.

We combine the aesthetic of your favorite building material with the uncompromising durability of fiber cement, giving you the look you want in considerably less time and for a fraction of the cost. Our expansive collection of textures includes metal, wood, concrete, stone and brick options in a full range of colors and finishes. Once you've used a Nichiha product, you'll see the difference — and want to use it again and again.



VINTAGEWOOD



ILLUMINATION | TUFFBLOCK | INDUSTRIALBLOCK

8 | DESIGNER SERIES

10 | DIMENSION SERIES

12 | MODERN SERIES

14 | WOOD SERIES

18 | CONCRETE SERIES

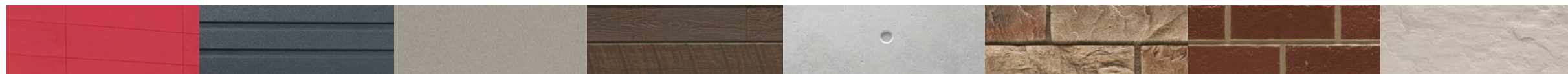
20 | KURASTONE™ SERIES

22 | BRICK SERIES

24 | MASONRY SERIES

26 | ESSENTIAL FLASHING

28 | INSTALLATION HARDWARE & TRIM





MULTIPLE LOOKS. ONE SOURCE.

Less time managing, more time imagining.

Why settle for one look when you can get multiple textures and finishes from a single manufacturer? With Nichiha Architectural Wall Panels, you can mix and match cladding styles to achieve the varied look you've been searching for. Whether you're looking for metal, stone, wood, concrete or brick, we have it all. Plus, all of our panel styles operate on the same clip installation system — saying goodbye to multiple contractors. You'll be able to move from conception to completion with ease, all while saving time and money.



USEFUL TIP

Add the finishing touches to your next project with our Essential Flashing on page 26.



National brands know the importance of consistent visual identity, and color plays a huge role. Nichiha's Color Xpressions system allows you to effortlessly match your brand's color palette — simply provide a standard paint code and we'll do the rest. In addition, we have the ability to hold custom stock for programs to ensure speed to market.



COLOR XPRESSIONS

Open your project up to a nearly limitless world of color possibilities.

Nichiha's Color Xpressions system provides a degree of design freedom that most cladding products don't offer, and the process is easy — choose the exact color you want, connect with a Nichiha representative who will coordinate the delivery of swatches, and sign off on your selection. This premium feature is available for Illumination, Ribbed and TuffBlock panels, and there is no minimum on custom orders. Matching trim pieces are also available, and Color Xpressions is backed by a 15-year limited factory-applied finish warranty.

*See Nichiha warranties for detailed information on terms, conditions and limitations.



LOOK FOR THIS ICON

You'll see this icon next to the products available in Color Xpressions: Illumination, Ribbed and TuffBlock.

Sleek. Bold. Vibrant.

THE DESIGNER SERIES



ILLUMINATION

ILLUMINATION SPECS

DIMENSIONS (ACTUAL MM)

THICKNESS (ACTUAL MM)

WEIGHT (LBS. PER PANEL)

WEIGHT (LBS. PER SQ. FT.)

EXPOSED COVERAGE (SQ. FT. PER PANEL)

PACKAGING (PIECES PER PACK)

AWP 1818

17-7/8" H x 71-9/16" L
(455MM H x 1818MM L)

5/8" (16MM)

35.2

3.9

8.88 SQ. FT.

2 [17.76 SQ. FT.]

AWP 3030

17-7/8" H x 119-5/16" L
(455MM H x 3030MM L)

5/8" (16MM)

57.2

3.8

14.81 SQ. FT.

2 [29.62 SQ. FT.]



CUSTOM HUES MEET MODERN DESIGN

With Color Xpressions, Illumination panels are available in an array of custom colors.



AWP 1818 CAN ONLY BE INSTALLED HORIZONTALLY.



AWP 3030 CAN BE INSTALLED HORIZONTALLY OR VERTICALLY.

MIRAIA



SNOW



GLACIER



ONYX

MIRAIA SPECS

AWP 1818

DIMENSIONS (ACTUAL MM)

17-7/8" H x 71-9/16" L
(455MM H x 1818MM L)

THICKNESS (ACTUAL MM)

5/8" (16MM)

WEIGHT (LBS. PER PANEL)

37.9

WEIGHT (LBS. PER SQ. FT.)

4.2

EXPOSED COVERAGE (SQ. FT. PER PANEL)

8.88 SQ. FT.

PACKAGING (PIECES PER PACK)

2 [17.76 SQ. FT.]

NOTE: MIRAIA PANELS ARE ONLY AVAILABLE WITH METAL TRIM CORNER OPTIONS.

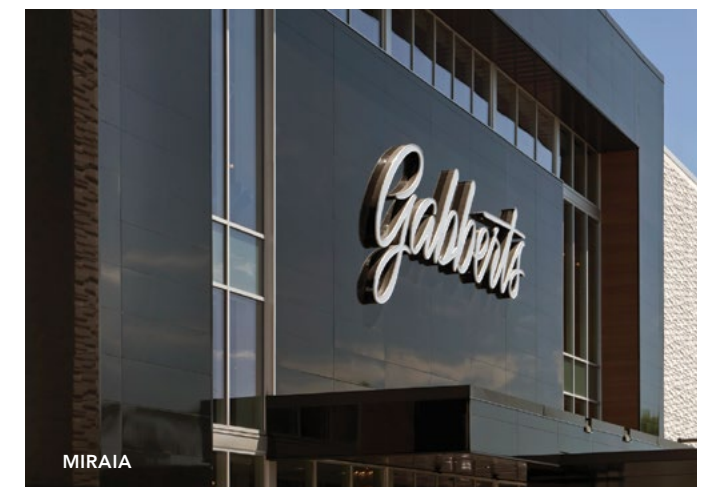
Get polished sophistication in your color.

Modern appeal. High performance. Cost-effective. The Designer Series, featuring Illumination™ and Miraia, is ideal for contemporary design projects. With its satin finish, ease of installation and virtually limitless color palette, Illumination provides significantly more value than traditional aluminum composite and phenolic panels.

Miraia — the only product of its kind in the fiber cement market — offers a reflective, high-gloss finish, perfect for design accents and as an affordable alternative to metal. It's available in Snow, Glacier and Onyx.



ILLUMINATION



MIRAIA



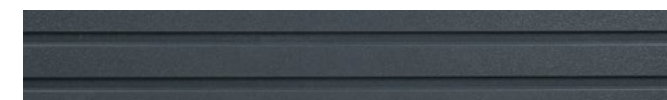
Create depth and intrigue with
THE DIMENSION SERIES

RIBBED | VINTAGEWOOD

RIBBED



IVORY



INDIGO

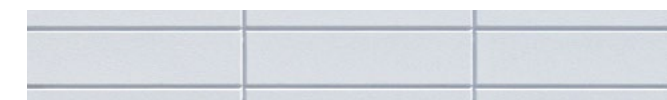
CUSTOM HUES MEET MODERN DESIGN
With Color Xpressions, Ribbed panels are available in an array of custom colors. Learn more on page 6.

Custom color and texture are often used to create depth to make small spaces seem larger. However, even large areas can benefit from these techniques to give flat designs more visual interest.

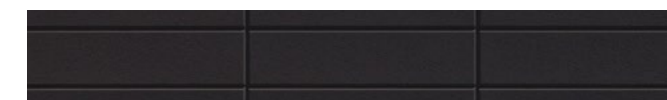
RIBBED SPECS	AWP 3030
DIMENSIONS (ACTUAL MM)	17-7/8" H x 119-5/16" L (455MM H x 3030MM L)
THICKNESS (ACTUAL MM)	5/8" (16MM)
WEIGHT (LBS. PER PANEL)	57.3
WEIGHT (LBS. PER SQ. FT.)	3.9
EXPOSED COVERAGE (SQ. FT. PER PANEL)	14.81 SQ. FT.
PACKAGING (PIECES PER PACK)	2 [29.62 SQ. FT.]

AWP 3030 CAN BE INSTALLED HORIZONTALLY OR VERTICALLY.

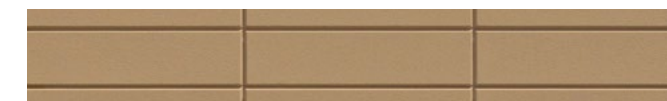
NOVENARY



OPAL



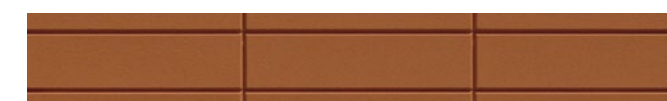
SLATE



SAND



OCHRE



CLAY

NOVENARY SPECS	AWP 1818
DIMENSIONS (ACTUAL MM)	17-7/8" H x 71-9/16" L (455MM H x 1818MM L)
THICKNESS (ACTUAL MM)	7/8" (21MM)
TILE SIZE	5-3/8" H x 23-1/4" L
WEIGHT (LBS. PER PANEL)	47.8
WEIGHT (LBS. PER SQ. FT.)	5.4
EXPOSED COVERAGE (SQ. FT. PER PANEL)	8.88 SQ. FT.
PACKAGING (PIECES PER PACK)	2 [17.76 SQ. FT.]

AWP 1818 CAN ONLY BE INSTALLED HORIZONTALLY.



RIBBED



NOVENARY | SANDSTONE

Color. Texture. Depth. It's Design Complexity Made Simple.

Don't settle for a single, flat look when the Dimension Series lets you add depth, texture and color to your designs. Our multi-dimensional Ribbed™ and Novenary panels bring visual interest to smooth surfaces, like glass or metal, with recessed reveals and striking shadow lines. An additional element, like color, is the perfect way to add another layer of depth and intrigue. The Dimension Series gives you the design flexibility you desire to bring walls to life.

Find form and function in THE MODERN SERIES



VINTAGEWOOD | ARCHITECTURALBLOCK | ILLUMINATION

ARCHITECTURALBLOCK



MOCHA



GRAY



TUSCAN

ARCHITECTURALBLOCK SPECS

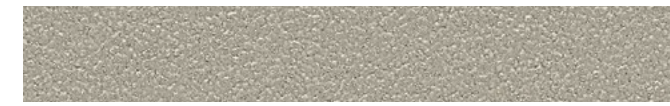
AWP 1818

DIMENSIONS (ACTUAL MM)	17-7/8" H x 71-9/16" L (455MM H x 1818MM L)
THICKNESS (ACTUAL MM)	5/8" (16MM)
WEIGHT (LBS. PER PANEL)	35.2
WEIGHT (LBS. PER SQ. FT.)	3.9
EXPOSED COVERAGE (SQ. FT. PER PANEL)	8.88 SQ. FT.
PACKAGING (PIECES PER PACK)	2 [17.76 SQ. FT.]

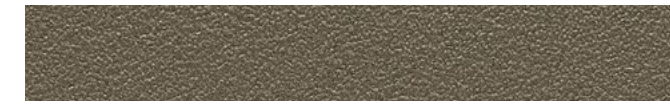
TUFFBLOCK



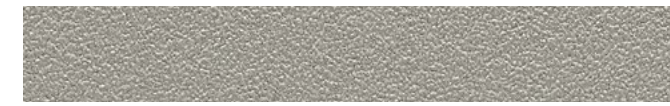
STEEL



BAMBOO



WALNUT



PEWTER

TUFFBLOCK SPECS

AWP 1818

DIMENSIONS (ACTUAL MM)	17-7/8" H x 71-9/16" L (455MM H x 1818MM L)
THICKNESS (ACTUAL MM)	5/8" (16MM)
WEIGHT (LBS. PER PANEL)	35.2
WEIGHT (LBS. PER SQ. FT.)	3.9
EXPOSED COVERAGE (SQ. FT. PER PANEL)	8.88 SQ. FT.
PACKAGING (PIECES PER PACK)	2 [17.76 SQ. FT.]



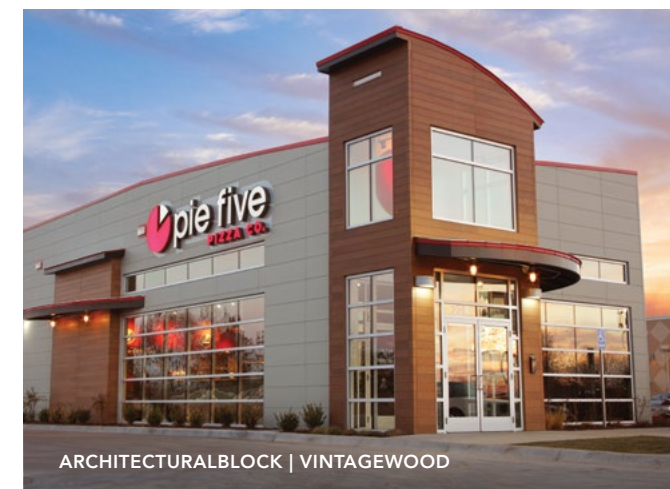
CUSTOM HUES MEET MODERN DESIGN

With Color Xpressions, TuffBlock is now available in an array of custom colors. Learn more on page 6.

Take modern to the next level with distinct textures and tones.

The clean, modular look of the Nichiha Modern Series is a versatile choice for commercial projects. The stylish tones and subtle seams are the perfect partner for gleaming glass and stainless steel. If you're looking for a modern contrast, the cool hues glow when paired with the warmth of wood. This series offers two distinct textures to ensure you find the perfect fit. ArchitecturalBlock™ is a handsome, durable and cost-effective solution. The ease of installation and wide variety of corner options make it as popular with contractors as it is with clients.

Its partner product, TuffBlock™, offers many of the same features as ArchitecturalBlock, but takes urban to the next level with a tough, textured finish. TuffBlock is built to last with strong construction that stands up to everyday wear and tear, making it the perfect panel for high-traffic areas. Whichever panel you choose, you've picked one that packs a punch while saving you time and money in the long run.



ARCHITECTURALBLOCK | VINTAGEWOOD



TUFFBLOCK | VINTAGEWOOD



Warm up your project with
THE WOOD SERIES

VINTAGEWOOD 1818

Get the natural look of wood with unmatched durability.

With 10 varieties of style and color, the Wood Series is our largest and most popular product line. Built to last, our VintageWood,™ RoughSawn,™ and brand new RiftSawn™ panels offer the rich textures of wood while providing color stability and withstanding extreme weather elements.

VintageWood exudes modern refinement and works well in both modern and vintage designs. Available in five colors — Bark, Cedar, Redwood, Ash and Spruce — VintageWood continues to be a best seller in the restaurant and retail markets. It pairs perfectly with glass, metal and block panels, adding a touch of warmth to the coolness of these materials. And because VintageWood can be installed vertically or horizontally, it offers a wide range of design options.

VINTAGEWOOD



BARK



CEDAR



REDWOOD



ASH



SPRUCE



VINTAGEWOOD TIP

Achieve the organic staggered look you love and take advantage of added design flexibility with our VintageWood 1818 panels, measuring nearly 6 feet in length. Contact your rep to learn more.

VINTAGEWOOD SPECS	AWP 1818	AWP 3030
DIMENSIONS (ACTUAL MM)	17-7/8" H x 71-9/16" L (455MM H x 1818MM L)	17-7/8" H x 119-5/16" L (455MM H x 3030MM L)
THICKNESS (ACTUAL MM)	5/8" (16MM)	5/8" (16MM)
WEIGHT (LBS. PER PANEL)	34.8	57.3
WEIGHT (LBS. PER SQ. FT.)	3.9	3.8
EXPOSED COVERAGE (SQ. FT. PER PANEL)	8.88 SQ. FT.	14.81 SQ. FT.
PACKAGING (PIECES PER PACK)	2 [17.76 SQ. FT.]	2 [29.62 SQ. FT.]

 AWP 1818 CAN ONLY BE INSTALLED HORIZONTALLY.

 AWP 3030 CAN BE INSTALLED HORIZONTALLY OR VERTICALLY.



VINTAGEWOOD | ROUGHSAWN



VINTAGEWOOD



ROUGHSAWN



ESPRESSO



TOBACCO



SMOKE

ROUGHSAWN SPECS

AWP 3030

DIMENSIONS (ACTUAL MM)	17-7/8" H x 119-5/16" L (455MM H x 3030MM L)
THICKNESS (ACTUAL MM)	5/8" (16MM)
WEIGHT (LBS. PER PANEL)	57.3
WEIGHT (LBS. PER SQ. FT.)	3.8
EXPOSED COVERAGE (SQ. FT. PER PANEL)	14.81 SQ. FT.
PACKAGING (PIECES PER PACK)	2 [29.62 SQ. FT.]

 AWP 3030 CAN BE INSTALLED HORIZONTALLY OR VERTICALLY.

RIFTSAWN



PECAN



CHESTNUT

RIFTSAWN SPECS

AWP 1818

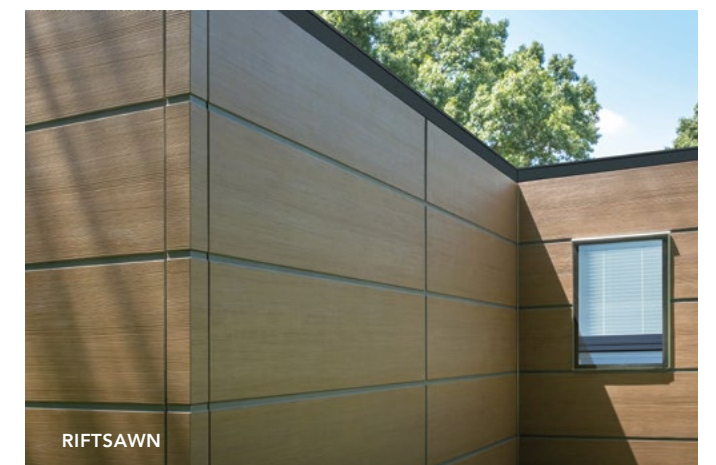
DIMENSIONS (ACTUAL MM)	17-7/8" H x 71-9/16" L (455MM H x 1818MM L)
THICKNESS (ACTUAL MM)	3/4" (18MM)
WEIGHT (LBS. PER PANEL)	41.6
WEIGHT (LBS. PER SQ. FT.)	4.7
EXPOSED COVERAGE (SQ. FT. PER PANEL)	8.88 SQ. FT.
PACKAGING (PIECES PER PACK)	2 [17.76 SQ. FT.]

 AWP 1818 CAN ONLY BE INSTALLED HORIZONTALLY.

Add rustic sophistication with RoughSawn and RiftSawn.

Nichiha's Wood Series provides the look of wood without the drawbacks of natural wood cladding, and the array of options continues to grow with the introduction of RiftSawn™. With its earthy appeal and rich texture, RiftSawn and RoughSawn™ add a rustic quality to all types of projects. They showcase the ridges, grooves and textures of natural wood while maintaining a consistent length that is easy to work with. RiftSawn is unique in the Wood Series with its full panel design, which incorporates a darker edge to create the look of a reveal. This provides the appearance of an open joint system with the added performance of a closed joint system.

Like VintageWood, these products also pair well with glass, metal, and block panels. And when it comes to installation, hidden fasteners provide a clean and beautiful look that works for exterior and interior applications. Nichiha gives you the perfect match — the beauty of wood backed by the brawn of fiber cement.





Find imperfect perfection with
THE CONCRETE SERIES

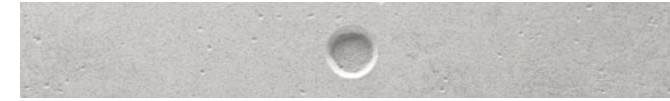
Put a fresh face on industrial chic.

Take back your time with the Nichiha Concrete Series. Designed to mimic the natural texture of concrete, our two panels offer distinct textures and styles to fit your creative vision. Plus, with the power of fiber cement, you can enjoy the look and feel of concrete without the curing times, cracking or color inconsistency.

IndustrialBlock™ offers a distressed design with all the irregularities and characteristics of natural concrete. It can pair seamlessly with a wide range of products, whether you are aiming for a modern or vintage vibe. EmpireBlock™ delivers the look and feel of precast concrete block with a modern twist. Perfect for exterior cladding as well as indoor environments, it features a unique dimple that defines the look of industrial chic.

Both sets of lightweight panels can be installed vertically and horizontally, covering approximately 15 square feet per panel, and have the durability you've come to expect from Nichiha.

EMPIREBLOCK



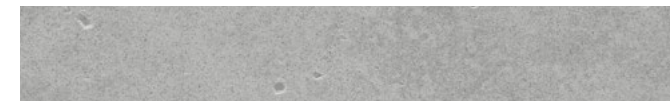
EMPIREBLOCK SPECS

AWP 3030

DIMENSIONS (ACTUAL MM)	17-7/8" H x 119-5/16" L (455MM H x 3030MM L)
THICKNESS (ACTUAL MM)	5/8" (16MM)
WEIGHT (LBS. PER PANEL)	57.3
WEIGHT (LBS. PER SQ. FT.)	3.8
EXPOSED COVERAGE (SQ. FT. PER PANEL)	14.81 SQ. FT.
PACKAGING (PIECES PER PACK)	2 [29.62 SQ. FT.]

 AWP 3030 CAN BE INSTALLED HORIZONTALLY OR VERTICALLY.

INDUSTRIALBLOCK



Want the concrete look without the dimples?
Check out our IndustrialBlock panel.

INDUSTRIALBLOCK SPECS

AWP 3030

DIMENSIONS (ACTUAL MM)	17-7/8" H x 119-5/16" L (455MM H x 3030MM L)
THICKNESS (ACTUAL MM)	5/8" (16MM)
WEIGHT (LBS. PER PANEL)	57.3
WEIGHT (LBS. PER SQ. FT.)	3.8
EXPOSED COVERAGE (SQ. FT. PER PANEL)	14.81 SQ. FT.
PACKAGING (PIECES PER PACK)	2 [29.62 SQ. FT.]

 AWP 3030 CAN BE INSTALLED HORIZONTALLY OR VERTICALLY.



INDUSTRIALBLOCK



EMPIREBLOCK

Find a cure for the common project with THE KURASTONE SERIES



LEDGESTONE | SANDSTONE

STACKEDSTONE



DESERT



MOUNTAIN

LEDGESTONE



BLUFF

STACKEDSTONE CORNER



LEDGESTONE CORNER



SILL-CHISELED



GRAY



TAN

STACKEDSTONE AND LEDGESTONE SPECS

DIMENSIONS (ACTUAL MM)	6" H x 25-5/8" L, 15-3/8" L, 10-1/4" L (150MM H x 650MM L, 390MM L, 260MM L)
THICKNESS (ACTUAL MM)	1-3/8" (35MM)
WEIGHT (LBS. PER SQ. FT.) - STACKEDSTONE	8.9
WEIGHT (LBS. PER SQ. FT.) - LEDGESTONE	9.2
COVERAGE (SQ. FT. PER PANEL)	1.1 (large), .63 (medium), .43 (small)
PACKAGING (SQ. FT. PER PACK)	5.4
PACKAGING (PIECES PER PACK)	3 large, 2 medium, 2 small

STACKEDSTONE AND LEDGESTONE CORNERS SPECS

DIMENSIONS (ACTUAL MM)	6" H x 5" W x 13" L [face] (150MM H x 125MM W x 330MM L [face])
THICKNESS (ACTUAL MM)	1-3/8" (35MM)
WEIGHT (LBS. PER PIECE) - STACKEDSTONE	6.7
WEIGHT (LBS. PER PIECE) - LEDGESTONE	8.5
COVERAGE (SQ. FT. PER PIECE)	.75
PACKAGING (SQ. FT. PER PACK)	3
PACKAGING (PIECES PER PACK)	4

SILL-CHISELED SPECS

DIMENSIONS (ACTUAL MM)	1-1/2" H [front]/1-3/4" H [back] x 23-5/8" L (38MM H [front]/47MM H [back] x 600MM L)
THICKNESS (ACTUAL MM)	2-3/8" (60MM)
WEIGHT (LBS. PER LN. FT.)	3.5
COVERAGE (LN. FT. PER PIECE)	2
PACKAGING (LN. FT. PER PACK)	12
PACKAGING (PIECES PER PACK)	6

NOTE: SILLS ARE PACKAGED WITH 14 INSTALLATION CLIPS.

Achieve the look of stacked stone without piling on cost.

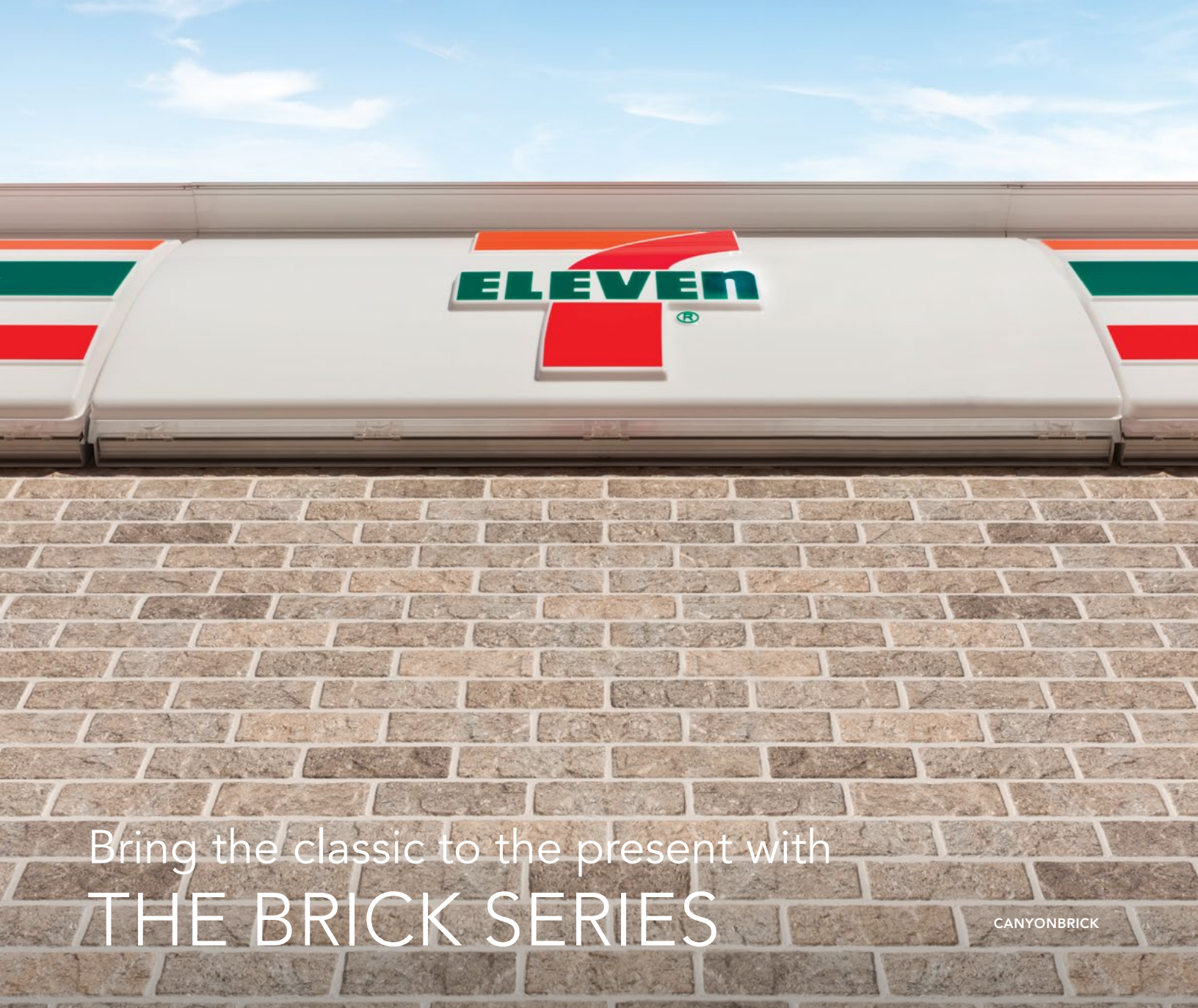
The Nichiha KuraStone™ family of products gives you the rustic stacked stone look you've been wishing for — without breaking your budget. Its rugged texture and color variation add interest and charm as an accent or as the main attraction for a building, and the wide variety of finishes and panel sizes provide a natural look no matter where you use them. Plus, the reduced material cost and simplified installation come together to save you time and money.



STACKEDSTONE | ILLUMINATION | VINTAGEWOOD



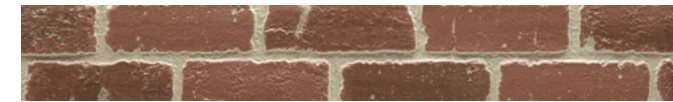
LEDGESTONE | CANYONBRICK



Bring the classic to the present with
THE BRICK SERIES

CANYONBRICK

VINTAGEBRICK™



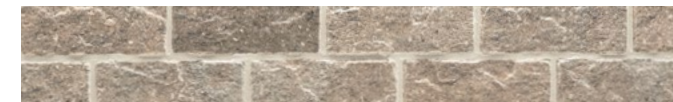
ALEXANDRIA BUFF



WHITE WASH

VINTAGEBRICK™ SPECS	AWP 1818
DIMENSIONS (ACTUAL MM)	17-7/8" H x 71-9/16" L (455MM H x 1818MM L)
THICKNESS (ACTUAL MM)	3/4" (18MM)
WEIGHT (LBS. PER PANEL)	39.6
WEIGHT (LBS. PER SQ. FT.)	4.4
EXPOSED COVERAGE (SQ. FT. PER PANEL)	8.88 SQ. FT.
PACKAGING (PIECES PER PACK)	2 [17.76 SQ. FT.]

CANYONBRICK™



SHALE BROWN

CANYONBRICK™ SPECS	AWP 1818
DIMENSIONS (ACTUAL MM)	17-7/8" H x 71-9/16" L (455MM H x 1818MM L)
THICKNESS (ACTUAL MM)	5/8" (16MM)
WEIGHT (LBS. PER PANEL)	35.2
WEIGHT (LBS. PER SQ. FT.)	3.9
EXPOSED COVERAGE (SQ. FT. PER PANEL)	8.88 SQ. FT.
PACKAGING (PIECES PER PACK)	2 [17.76 SQ. FT.]

PLYMOUTHBRICK™



CRIMSON

Get the classic look of kiln-fired brick with the modern strength of PlymouthBrick panels.

PLYMOUTHBRICK™ SPECS	AWP 1818
DIMENSIONS (ACTUAL MM)	17-7/8" H x 71-9/16" L (455MM H x 1818MM L)
THICKNESS (ACTUAL MM)	5/8" (16MM)
WEIGHT (LBS. PER PANEL)	35.2
WEIGHT (LBS. PER SQ. FT.)	3.9
EXPOSED COVERAGE (SQ. FT. PER PANEL)	8.88 SQ. FT.
PACKAGING (PIECES PER PACK)	2 [17.76 SQ. FT.]

MODERNBRICK™

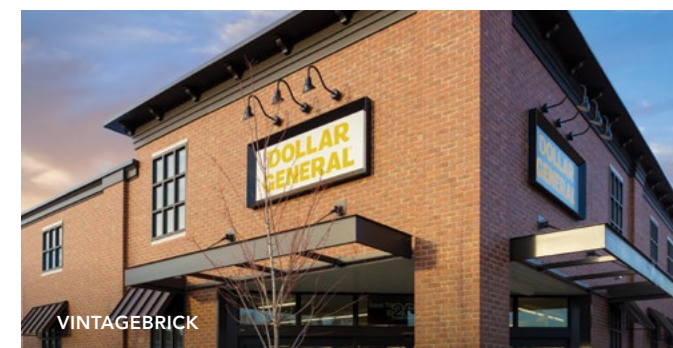


MIDNIGHT

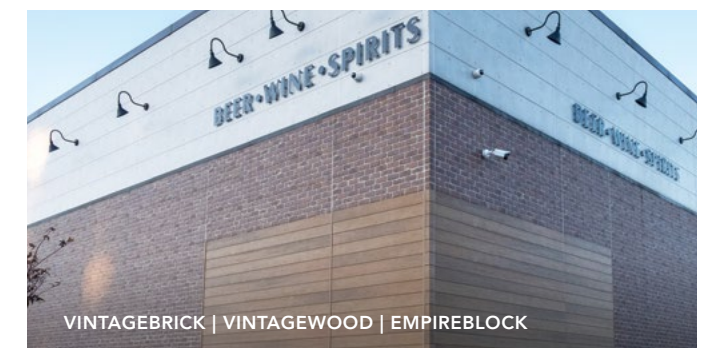
MODERNBRICK™ SPECS	AWP 1818
DIMENSIONS (ACTUAL MM)	17-7/8" H x 71-9/16" L (455MM H x 1818MM L)
THICKNESS (ACTUAL MM)	5/8" (16MM)
WEIGHT (LBS. PER PANEL)	36.6
WEIGHT (LBS. PER SQ. FT.)	4.1
EXPOSED COVERAGE (SQ. FT. PER PANEL)	8.88 SQ. FT.
PACKAGING (PIECES PER PACK)	2 [17.76 SQ. FT.]

Get a timeless brick finish without the traditional hassle.

The slight variations in color, the stately good looks, the grout lines — it's all there in the Nichiha Brick Series. Thanks to a proprietary multi-layered coating process, the beauty of brick is built to last in these fiber cement panels. With five finishes, you have the freedom to create the brick building of your choice without the extra cost or hassle. These panels really do have it all; however, we did leave out the tons of weight and the extra time required to see your project to completion. We figured they wouldn't be missed.



VINTAGEBRICK



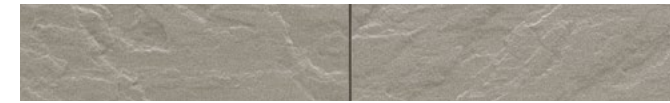
VINTAGEBRICK | VINTAGEWOOD | EMPIREBLOCK

Gain rock solid solutions with THE MASONRY SERIES



SANDSTONE | VINTAGEWOOD

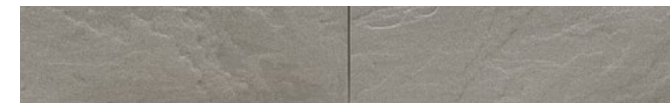
SANDSTONE



AUTUMN BROWN



DESERT BEIGE



GENTLE GRAY

SANDSTONE SPECS

AWP 1818

DIMENSIONS (ACTUAL MM)	17-7/8" H x 71-9/16" L (455MM H x 1818MM L)
THICKNESS (ACTUAL MM)	3/4" (18MM)
WEIGHT (LBS. PER PANEL)	39.68
WEIGHT (LBS. PER SQ. FT.)	4.41
EXPOSED COVERAGE (SQ. FT. PER PANEL)	8.88 SQ. FT.
PACKAGING (PIECES PER PACK)	2 [17.76 SQ. FT.]



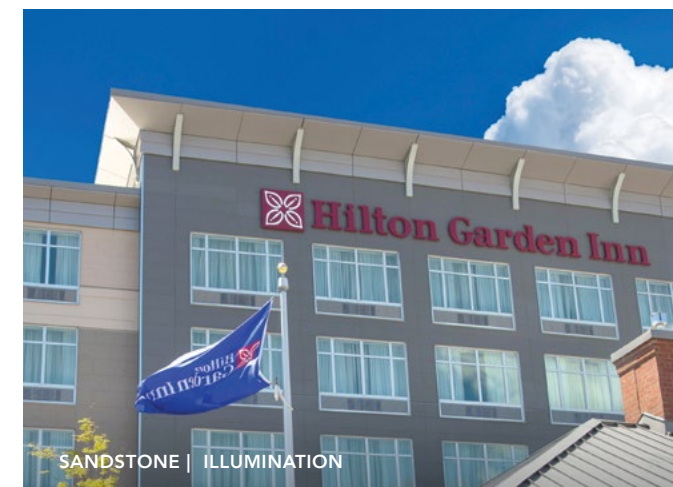
NO MORTAR, NO MESS

Prefinished panels eliminate the need for messy mortar or costly masonry-skilled labor, while still providing a textured finish and enduring design aesthetic.

Get the beauty of stone for a fraction of the price.

Nichiha's Masonry Series makes grandeur attainable for every situation. Offering a distinct finish, this series of stone panels is as elegant as it is affordable.

With its subtle color and deep texture, our SandStone™ captures the look of limestone and adds a traditional design aesthetic to any commercial building. Covering approximately 9 square feet per panel, this finish goes up in a fraction of the time required by a crew of masonry contractors. Plus, with three color options, you have even more possibilities for customization — all backed by the power of fiber cement.



SANDSTONE | ILLUMINATION



SANDSTONE | ARCHITECTURALBLOCK | ILLUMINATION

ESSENTIAL FLASHING

Create a clean, polished look for your building with the highest level of precision.



COMPRESSION JOINT FLASHING (10')

Used in conjunction with Ultimate Horizontal/Vertical Starter Tracks at floor joists in buildings that require compression joints. Can be painted or powder coated to match panels.

THICKNESS	10MM
PACKAGING (LN. FT. PER TUBE)	50



OVERHANG FLASHING (10') - JOH7288

Used at the base of overhangs, bump-outs or porte-cochères.

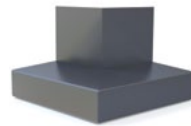
THICKNESS	10MM
PACKAGING (LN. FT. PER BOX)	40



OVERHANG FLASHING INSIDE CORNER - JOH7288D

Used in conjunction with Overhang Flashing at inside corners.

THICKNESS	10MM
PACKAGING (PCS PER PACK)	2



OVERHANG FLASHING OUTSIDE CORNER - JOH7288B

Used in conjunction with Overhang Flashing at outside corners.

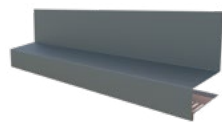
THICKNESS	10MM
PACKAGING (PCS PER PACK)	2



OVERHANG FLASHING CLIP - JOH7288S

Placed at seams where Overhang Flashing and corners meet.

THICKNESS	10MM
PACKAGING (PCS PER PACK)	1



STARTER FLASHING (10') - FTD4788

Used in conjunction with the Ultimate Horizontal/Vertical Starter Tracks at the bottom of a building.

THICKNESS	10MM
PACKAGING (LN. FT. PER BOX)	50



STARTER FLASHING OUTSIDE CORNER - FTD4788B

Used in conjunction with Starter Flashing at outside corners.

THICKNESS	10MM
PACKAGING (PCS PER PACK)	4



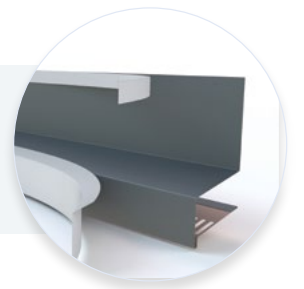
STARTER FLASHING INSIDE CORNER - FTD4788D

Used in conjunction with Starter Flashing at inside corners.

THICKNESS	10MM
PACKAGING (PCS PER PACK)	4

NOTES: EACH COMPONENT OF ESSENTIAL FLASHING IS SOLD SEPARATELY; STARTER AND OVERHANG FLASHING IS AVAILABLE IN BLACK ONLY.

Nichiha takes accessory protection to the next level with a **removable film layer**. Once installed, simply peel off the film to reveal blemish-free fixtures.



Our starter flashing serves a dual role — ensuring your project is polished to perfection and operating as a bug screen to keep annoying pests away.

INSTALLATION HARDWARE

Easily take your vision from the drawing board to reality.



ULTIMATE CLIP II WITH JOINT TAB ATTACHMENT - JEL778* & JEL788**

Creates a hidden fastening system that all but eliminates face fastening. The joint tab helps support panel lateral stability.

THICKNESS	10MM
PACKAGING (PCS PER BOX)	30



ULTIMATE HORIZONTAL STARTER TRACK (10') - FA700

Ensures a fast, level installation. Its patented drainage channel directs water out and away from the base of the wall.

THICKNESS	10MM
PACKAGING (LN. FT. PER BOX)	100



ULTIMATE VERTICAL STARTER TRACK (10') - FA710T

Ensures a fast, level installation with 3030 panels. Its patented drainage channel directs water out and away from the base of the wall.

THICKNESS	10MM
PACKAGING (LN. FT. PER BOX)	100



SINGLE FLANGE SEALANT BACKER (6.5') - FHK1015R

Used for vertical jambs at doors and windows and at inside corners of the building.

THICKNESS	10MM
PACKAGING (LN. FT. PER BOX)	65



DOUBLE FLANGE SEALANT BACKER (10') - FH1015R

Used for vertical expansion joints. Placed at the end of each 3030 panel, and every 30' with 1818 panels and with the preformed outside corner.

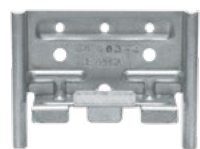
THICKNESS	10MM
PACKAGING (LN. FT. PER BOX)	100



CORRUGATED SHIM (4') - FS1005 & FS1010

Used for face fastening where required (top of building, doors, windows, etc.)

THICKNESS (FS1005)	5MM
THICKNESS (FS1010)	10MM
PACKAGING (LN. FT. PER BOX)	200



KURASTONE™ CLIP - JE720CA

Creates a hidden fastening system that all but eliminates face fastening for Kurastone panels and corners.

THICKNESS	10MM
PACKAGING (PCS PER PACK)	50



CORNER CLIP - JE777C* & JE787C**

Corner clip for the preformed Nichiha fiber cement corners.

THICKNESS	10MM
PACKAGING (PCS PER BOX)	6



CORNERS

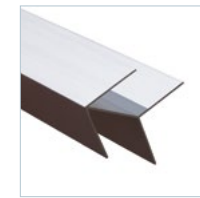
Prefinished corners are used in conjunction with horizontal panel installation.

17 7/8" H x 3-1/2" [face]
1818MM H x 88.9MM [face]

*JEL778 and JE777C are compatible with all panels except SandStone and VintageBrick.
**JEL788 and JE787C are compatible with SandStone and VintageBrick only.

METAL TRIM

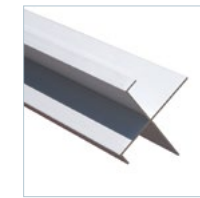
With our customized metal trim, your project practically finishes itself.



CORNER KEY

Extrusion used at outside corners instead of a preformed corner. A vertical expansion joint is required 2' to 10' from the corner when using this corner.

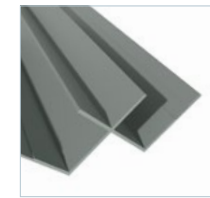
DIMENSIONS (NOM. FT. ~ ACTUAL MM)	3" x 10' (76.2MM x 3030MM)
PACKAGING (LN. FT. PER TUBE)	50



OPEN OUTSIDE CORNER

Extrusion used at outside corners instead of a preformed corner. A vertical expansion joint is required 2' to 12' from the corner when using this corner.

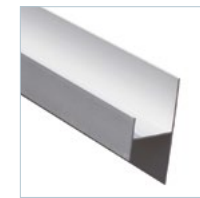
DIMENSIONS (NOM. FT. ~ ACTUAL MM)	2.96" x 10' (75MM x 3030MM)
PACKAGING (LN. FT. PER TUBE)	50



INSIDE CORNER

Used where two Nichiha panels meets in an inside corner; alternative to Single Flange Sealant Backer with sealant.

DIMENSIONS (NOM. FT. ~ ACTUAL MM)	3.4" x 10' (86.4MM x 3030MM)
PACKAGING (LN. FT. PER TUBE)	50



H-MOLD

Can be used at the end of 3030 panels instead of the Double Flange Sealant Backer, but not at the preformed outside corners.

DIMENSIONS (NOM. FT. ~ ACTUAL MM)	2" x 10' (50.8MM x 3030MM)
PACKAGING (LN. FT. PER TUBE)	50



J-MOLD

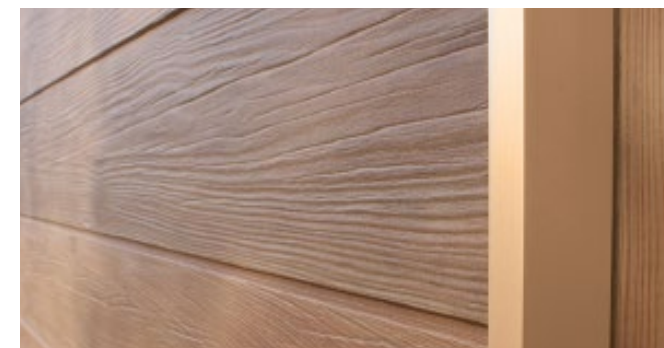
Can be used instead of Single Flange Sealant Backer at vertical jambs for doors and windows, but not at the inside corners of the building.

DIMENSIONS (NOM. FT. ~ ACTUAL MM)	0.375" x 10' (9.5MM x 3030MM)
PACKAGING (LN. FT. PER TUBE)	50



Our trim gives you options

All of our metal trim is available in four finishes: primed, clear anodized, powder coated, or custom color. For pricing and lead times, view our Price Catalog at nichiha.com/price-catalog.



For popular panels like VintageWood, we've made ordering easier by color matching all of our trim profiles to have in stock for fast delivery.



Thanks to our Color Xpressions system, Nichiha can customize trim to match any color you use on custom color panels.



Behind our Architectural Wall Panels is SOME SERIOUS TECHNOLOGY.

EASY INSTALLATION

Time-saving clip installation system that reduces construction time and minimizes mistakes.



NO MORTAR, NO MESS

Prefinished panels eliminate the need for messy mortar or costly masonry-skilled labor.



ANY WEATHER PRODUCT

Products can be installed year round in any climate across the country. No geographical restrictions means more possibilities.



LOW MAINTENANCE

No-fuss products. Little ongoing cleaning or regular maintenance needed. Bring your vision to life and ensure it looks great for years to come.

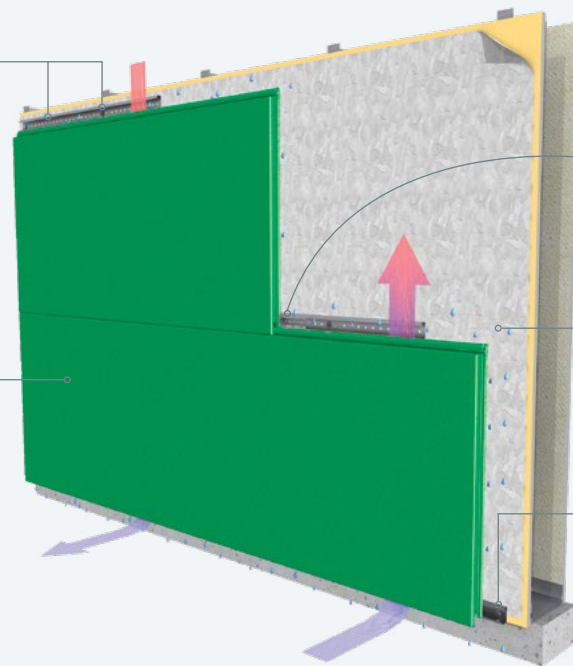


ENGINEERED FOR PERFORMANCE

Go beyond our durable panels and discover a meticulously engineered moisture management system that provides a vertical drainage point for air and moisture to exit.

THE ULTIMATE CLIP creates a hidden fastening system that all but eliminates face fastening. Installation is quick and easy and never requires specialty subcontractors.

NICHIHA ARCHITECTURAL WALL PANELS are lightweight, easy to handle and available in a virtually endless color palette and a diverse offering of textural finishes.



NICHIHA'S JOINT TAB ATTACHMENT is designed to support panel lateral stability, helping vertical joints stay tightly closed. The tab fits in place easily and is fastened to the Ultimate Clip with provided screw.

DRAINED AND BACK-VENTILATED RAINSCREEN design allows water to escape and air to circulate, reducing the risk of mold and water damage inside the building.

THE ULTIMATE STARTER TRACK pulls double-duty. It ensures a fast, level installation, and its patented drainage channel directs water out and away from the base of the wall.

Never underestimate the power of REALLY GOOD TOOLS.

Whether you are an architect, contractor, installer or builder, Nichiha ensures that you have all the information you need to make your project go as smoothly as possible. The way we see it, we are partners. Our website offers a comprehensive collection of technical information, installation videos, architectural details, in-depth specifications and everything you'll ever need to know about installing Nichiha products.



DESIGN REVIEW GUIDE

Download our quick reference guide to get an overview on our Architectural Wall Panels.

nichiha.com/docs/nichiha-design-review-guide.pdf



INSTALL DOCUMENTATION

Take an even deeper dive and download our in-depth installation guides.

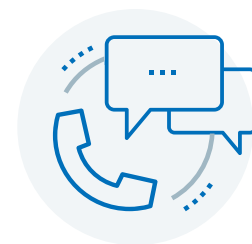
nichiha.com/resource-center/install-support



INSTALL VIDEOS

Watch our installation instructions come to life — check out our installation videos today!

nichiha.com/resource-center/install-support



SUPPORT

Our in-house technical team is here to assist. If you have questions, comments or concerns, call or email us.

1.866.424.4421 or technicalservices@nichiha.com

THE POWER OF POSSIBILITIES AND PARTNERSHIPS

Your creative vision is unique. That's why Nichiha offers you the power of cooperation to help your project move from conception to completion. Our ever-expanding offering of textures and finishes lifts buildings to new and unexpected places, and we want to share them with you. We place a high value on our relationships and are proud to work with our dedicated partners across the country. Join us to discover the power of possibilities and partnerships with Nichiha.



AIA
Continuing
Education
Provider

NICHIHA WARRANTIES

- ARCHITECTURAL WALL PANELS
15-year limited warranty* on panels
15-year limited warranty* on finish
- KURASTONE™ PANELS
15-year limited warranty* on panels
10-year limited warranty* on finish
- METAL TRIM
TAMLYN warrants defective-free products for a period of 10 years for the original purchaser. Please visit tamlyn.com for detailed information on terms, conditions and limitations.

*See Nichiha warranties for detailed information on terms, conditions and limitations. Visit nichiha.com for easy downloadable warranties or call toll-free 1.866.424.4421 for a copy.

Nichiha MSDS is available at nichiha.com, at your local Nichiha dealer or call Nichiha direct, toll-free 1.866.424.4421.

CERTIFICATION & TESTING



CCRR-0299
CCRR-0290



Report
No. EC-58



Canada CCMC
14132-R



Report
No. FL12875
No. FL12812



NOA 18-0522.05



WUI 8140-2029



RR 26081



SILICA DUST WARNING: Nichiha products may contain some amounts of crystalline silica [a.k.a. sand, silicon dioxide], which is a naturally occurring mineral. The amount will vary from product to product. Inhalation of crystalline silica into the lungs and repeated exposure to silica can cause health disorders, such as silicosis, lung cancer, or death depending upon various factors. To be conservative, Nichiha recommends that whenever cutting, sawing, sanding, sniping or abrading the product, users observe Safety Instructions. For further information or questions, please consult the MSDS, your employer, or visit osha.gov/SLTC/silicacrystalline/index.html and cdc.gov/niosh/topics/silica. The MSDS for Nichiha products are available at nichiha.com, at your local Nichiha dealer or through Nichiha directly at 1.866.424.4421. FAILURE TO ADHERE TO OUR WARNINGS, MSDS, AND OTHER INSTRUCTION MAY LEAD TO SERIOUS PERSONAL INJURY OR DEATH.

ARCHITECTURALBLOCK, CANYONBRICK, EMPIREBLOCK, ILLUMINATION, INDUSTRIALBLOCK, KURASTONE, PLYMOUTHBRICK, MIRAIA, RIBBED, ROUGHSAWN, SANDSTONE, TUFFBLOCK, VINTAGEBRICK, VINTAGEWOOD, and THE POWER OF POSSIBILITIES, are trademarks of Nichiha USA, Inc.

6465 E. JOHNS CROSSING, SUITE 250, JOHNS CREEK, GA 30097 | 866.424.4421 | NICHIHA.COM

NOTE: Printed material may not accurately depict actual product color. ©2020 Nichiha USA, Inc. All rights reserved. Digital version released 08.20.