



# Architectural Wall Panel SYSTEM



ILLUMINATION Custom Color

## A-ha. You found Nichiha.

For more than 25 years, Nichiha has provided architects, designers, owners, and developers with resilient, durable, versatile exterior cladding options that achieve design precision like never before. We invite you to explore the remarkable possibilities achievable with Nichiha Architectural Wall Panel system for your next project.



VINTAGEWOOD Cedar



ROUGHSAWN Smoke | ILLUMINATION Custom Color

10 | DESIGNER SERIES

16 | DIMENSION SERIES

20 | MODERN SERIES

22 | WOOD SERIES

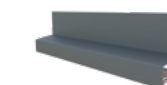
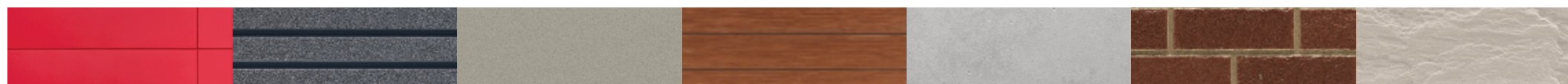
28 | CONCRETE SERIES

30 | BRICK SERIES

32 | MASONRY SERIES

34 | ESSENTIAL FLASHING

36 | INSTALLATION HARDWARE & TRIM





## Multiple looks. One source.

With the Nichiha AWP system, you can freely mix and match cladding styles. Whether you're looking for metal, stone, wood, concrete, or brick, you'll find them all here. Plus, all of our panel styles install with the same hardware.



Scan here to explore the Nichiha Architectural Wall Panel system.



ILLUMINATION Custom Color | MIRAIA Glacier | TUFFBLOCK



ILLUMINATION Custom Color | RIBBED | INDUSTRIALBLOCK



### USEFUL TIP

Add the finishing touches to your next project with our Essential Flashing on page 32.



# COLOR XPRESSIONS

The custom colors you want to express your unique vision.



ILLUMINATION Custom Color | VINTAGEWOOD Cedar | VINTAGEWOOD Spruce

Nichiha's Color Xpressions system provides design freedom that most cladding products don't by offering virtually any color you can imagine. The three-step process is simple:

- ① Choose the exact color you want.
- ② Connect with a Nichiha representative who will coordinate the delivery of swatches.
- ③ Sign off on your color selection.

This premium feature is available for Illumination, Ribbed, Latura V-Groove, and TuffBlock panels and has no minimum order required. In addition to offering matching trim pieces, Color Xpressions is backed by a 15-year limited factory-applied finish warranty.

\*See Nichiha warranties for detailed information on terms, conditions, and limitations.



ILLUMINATION Custom Color | RIBBED Custom Color  
VINTAGEWOOD Ash



ILLUMINATION Custom Color



### LOOK FOR THIS ICON

You'll see this icon next to the products available in Color Xpressions: Illumination, Ribbed, Latura V-Groove and TuffBlock.



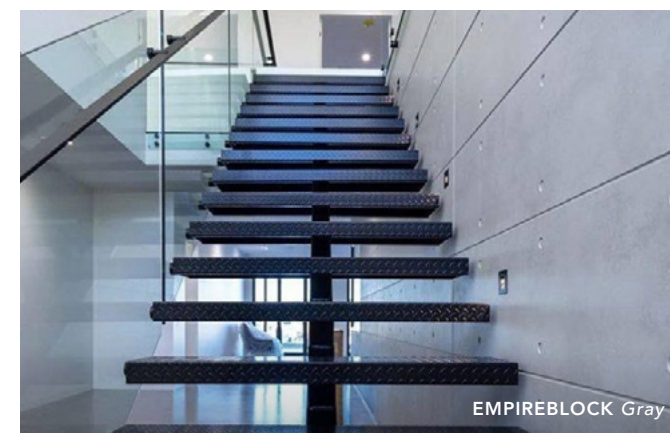
## Interior Style with an Exterior Heritage

Achieve the enduring look and feel of wood, stone, poured concrete, thin brick, and more for your interior space with Nichiha Architectural Wall Panels (AWP).

Using the same trusted installation system and durable panels proven in exterior applications, AWP delivers sophisticated interior aesthetics without compromise.

Installed directly to ordinary interior wall substrates using a universal clip installation system, AWP achieves the high-end look of brick, stone, concrete, and more without the need for traditional grout and mortar adhesives.

Get the design flexibility you want with the proven performance you need



### IMPORTANT

No mortar means no mess, as well as no need for specialized trades or lengthy curing times.




## Polished sophistication in color.

Elevated, contemporary style with Nichiha's superior performance to match. That's the hallmark of our Designer Series featuring Illumination and Miraia.

With a sleek satin finish, the easy-to-install Illumination wall panels are perfect for your next modern project. And with our revolutionary Color Xpressions system, the design possibilities are virtually endless.

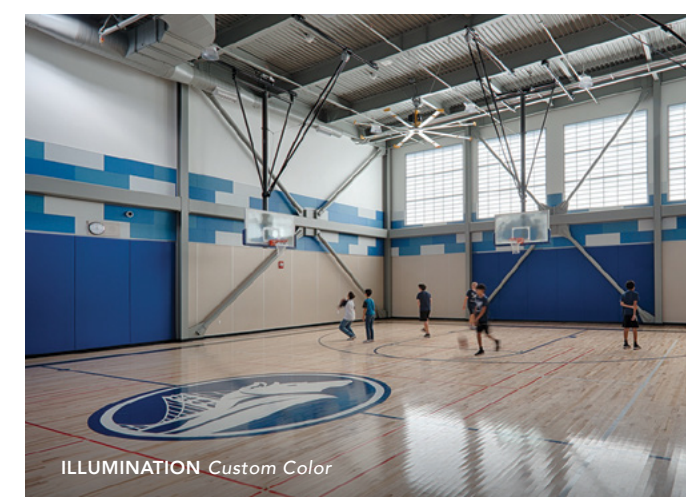
### ILLUMINATION SPECS

	AWP 1818	AWP 3030
DIMENSIONS (ACTUAL MM)	17-7/8" H x 71-9/16" L (455MM H x 1818MM L)	17-7/8" H x 119-5/16" L (455MM H x 3030MM L)
THICKNESS (ACTUAL MM)	5/8" (16MM)	5/8" (16MM)
WEIGHT (LBS. PER PANEL)	39.71	66.18
WEIGHT (LBS. PER SQ. FT.)	4.47	4.47
EXPOSED COVERAGE (SQ. FT. PER PANEL)	8.88 SQ. FT.	14.81 SQ. FT.
PACKAGING (PIECES PER PACK)	2 [17.76 SQ. FT.]	2 [29.62 SQ. FT.]

 **CUSTOM HUES MEET MODERN DESIGN**  
 With Color Xpressions, Illumination panels are available in an array of custom colors.

 AWP 1818 CAN ONLY BE INSTALLED HORIZONTALLY.

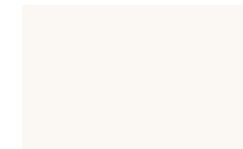
 AWP 3030 CAN BE INSTALLED HORIZONTALLY OR VERTICALLY.



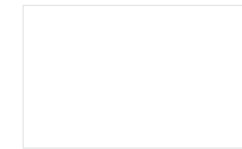


ILLUMINATION Fog, Graphite, Nickel, Raven | VINTAGEWOOD Redwood

ILLUMINATION



WARM WHITE  
ED680M-WARMWHITE



COTTON  
ED680M-COTTON



FOG  
ED680M-FOG



NICKEL  
ED680M-NICKEL



GRAPHITE  
ED680M-GRAPHITE



BAY BLUE  
ED680M-BAYBLUE



LAVA  
ED680M-LAVA



SCARLET  
ED680M-SCARLET



RAVEN  
ED680M-RAVEN

ILLUMINATION SPECS

AWP 1818

DIMENSIONS (ACTUAL MM)

17-7/8" H x 71-9/16" L  
(455MM H x 1818MM L)

THICKNESS (ACTUAL MM)

5/8" (16MM)

WEIGHT (LBS. PER PANEL)

39.71

WEIGHT (LBS. PER SQ. FT.)

4.47

EXPOSED COVERAGE (SQ. FT. PER PANEL)

8.88 SQ. FT.

PACKAGING (PIECES PER PACK)

2 [17.76 SQ. FT.]

 AWP 1818 CAN ONLY BE INSTALLED HORIZONTALLY.

## Long-lasting color. Short lead times.

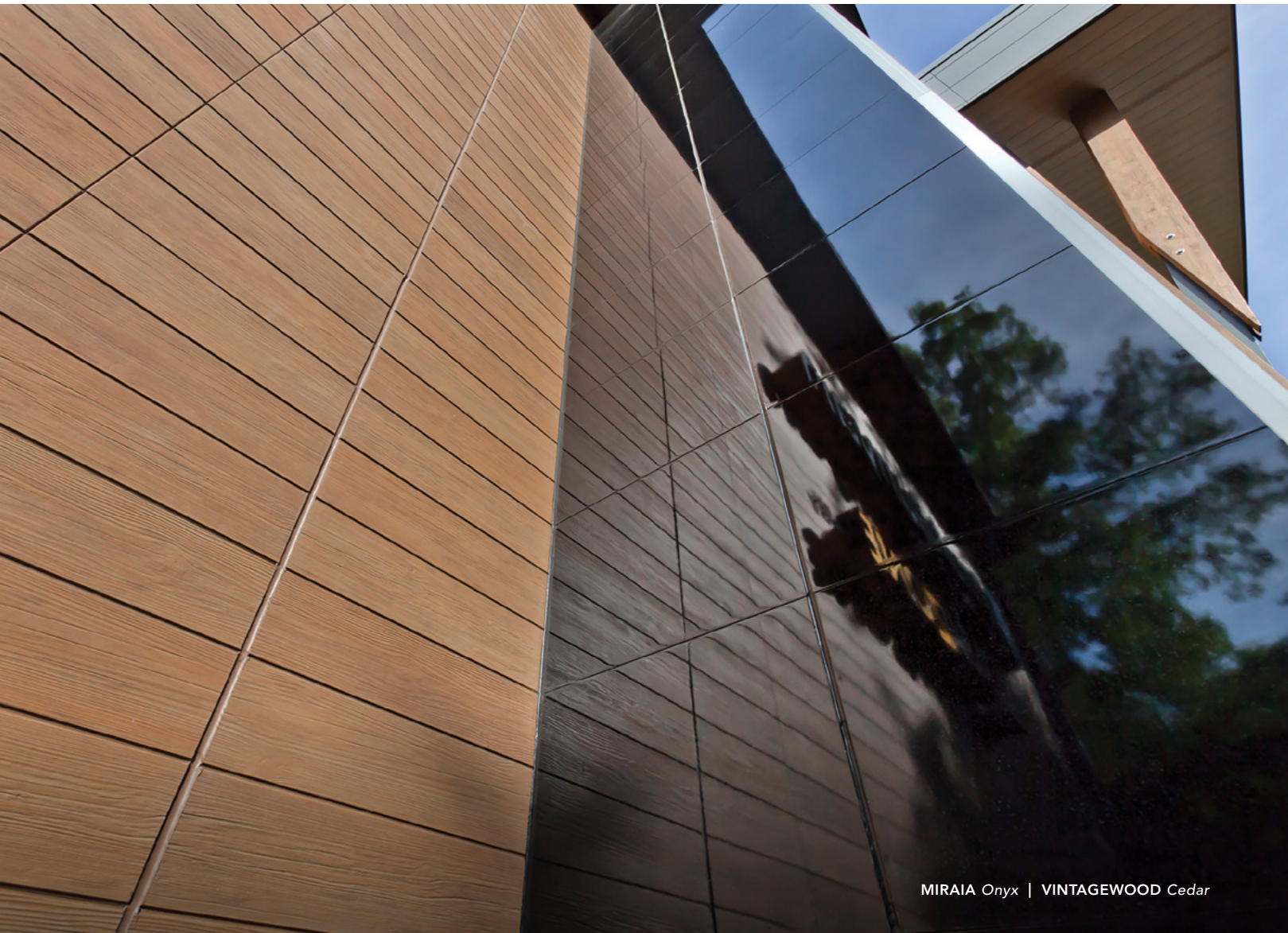
With its satin finish, flat surface, and virtually limitless color palette, Illumination provides far more value than aluminum composite and phenolic panels. It is available in ten stock colors with reliable shipping options and ensuring that your orders arrive as quickly as possible as well as any custom color to perfectly achieve your vision.



ILLUMINATION Bay Blue + Fog | TUFFBLOCK Steel



ILLUMINATION



MIRAIA Onyx | VINTAGEWOOD Cedar

MIRAIA



SNOW



GLACIER



ONYX

NOTE: Miraia panels are only available with metal trim corner options. Prefinished corners are not available. See page 35 for more information.

MIRAIA SPECS

AWP 1818

DIMENSIONS (ACTUAL MM)	17-7/8" H x 71-9/16" L (455MM H x 1818MM L)
THICKNESS (ACTUAL MM)	5/8" (16MM)
WEIGHT (LBS. PER PANEL)	37.9
WEIGHT (LBS. PER SQ. FT.)	4.27
EXPOSED COVERAGE (SQ. FT. PER PANEL)	8.88 SQ. FT.
PACKAGING (PIECES PER PACK)	2 [17.76 SQ. FT.]



MIRAIA Glacier



MIRAIA Onyx

## Reflect a higher standard.

High-design projects require luxe, head-turning cladding like Miraia. Miraia offers a reflective, high-gloss finish, which is perfect for design accents or a more affordable alternative to metal.



MIRAIA Onyx | RIBBED Custom Color



MIRAIA Snow



# Dimension Series

RIBBED Custom Color

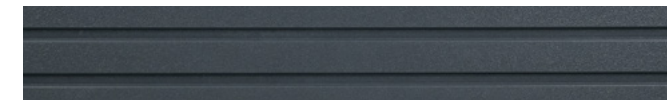
## Crisp lines and shadows for precision and interest.

With recessed reveals and striking shadow lines, Ribbed and Novenary panels add visual interest, especially when contrasted with smooth surfaces. Novenary's terracotta tones blend beautifully with natural surroundings, while Ribbed panels are available in virtually any color.

RIBBED



IVORY



INDIGO

**CUSTOM HUES MEET MODERN DESIGN**  
 With Color Xpressions, Ribbed panels are available in an array of custom colors. Learn more on page 6.

Custom color and texture are often used to create depth to make small spaces seem larger. However, even large areas can benefit from these techniques to give flat designs more visual interest.

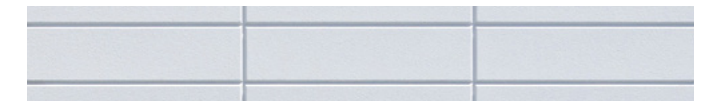
RIBBED SPECS	AWP 3030
DIMENSIONS (ACTUAL MM)	17-7/8" H x 119-5/16" L (455MM H x 3030MM L)
THICKNESS (ACTUAL MM)	5/8" (16MM)
WEIGHT (LBS. PER PANEL)	64.60
WEIGHT (LBS. PER SQ. FT.)	4.36
EXPOSED COVERAGE (SQ. FT. PER PANEL)	14.81 SQ. FT.
PACKAGING (PIECES PER PACK)	2 [29.62 SQ. FT.]

AWP 3030 CAN BE INSTALLED HORIZONTALLY OR VERTICALLY.

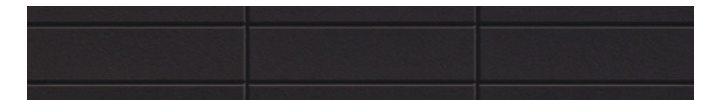


RIBBED Custom Color | ILLUMINATION Custom Color

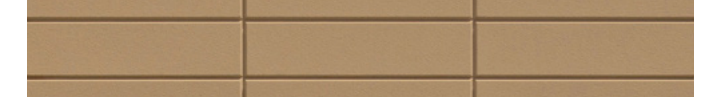
NOVENARY



OPAL



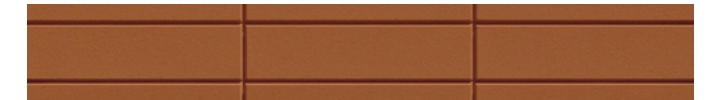
SLATE



SAND



OCHRE



CLAY

NOVENARY SPECS	AWP 1818
DIMENSIONS (ACTUAL MM)	17-7/8" H x 71-9/16" L (455MM H x 1818MM L)
THICKNESS (ACTUAL MM)	7/8" (21MM)
TILE SIZE	5-3/8" H x 23-1/4" L
WEIGHT (LBS. PER PANEL)	47.8
EXPOSED COVERAGE (SQ. FT. PER PANEL)	8.88 SQ. FT.
PACKAGING (PIECES PER PACK)	2 [17.76 SQ. FT.]

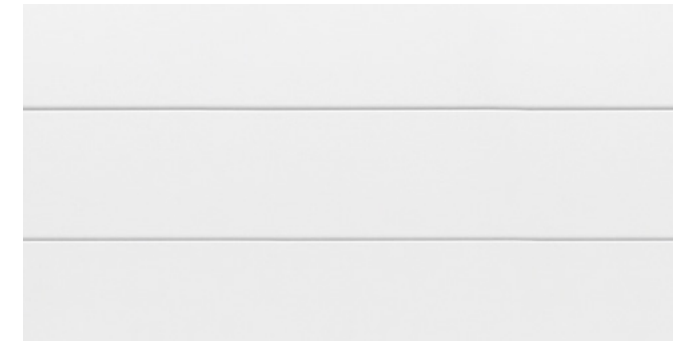
AWP 1818 CAN ONLY BE INSTALLED HORIZONTALLY.



NOVENARY Opal | VINTAGEWOOD Bark



LATURA V-GROOVE 



WHITE



GRAY



**CUSTOM HUES MEET MODERN DESIGN**

With Color Xpressions, Latura V-Groove panels are available in an array of custom colors. Learn more on page 6.

**LATURA V-GROOVE SPECS**

DIMENSIONS (ACTUAL MM)

**AWP 1818**

17-7/8" H x 71-9/16" L  
(455MM H x 1818MM L)

**AWP 3030**

17-7/8" H x 119-5/16" L  
(455MM H x 3030MM L)

THICKNESS (ACTUAL MM)

5/8" (16MM)

5/8" (16MM)

WEIGHT (LBS. PER PANEL)

40.35

65.26

WEIGHT (LBS. PER SQ. FT.)

4.54

4.41

EXPOSED COVERAGE (SQ. FT. PER PANEL)

8.88 SQ. FT.

14.81 SQ. FT.

PACKAGING (PIECES PER PACK)

2 [17.76 SQ. FT.]

2 [29.62 SQ. FT.]

 AWP 1818 CAN ONLY BE INSTALLED HORIZONTALLY.

 AWP 3030 CAN BE INSTALLED HORIZONTALLY OR VERTICALLY.

## The look of shiplap. The performance of Nichiha.

The classic look of shiplap with exceptional performance. Latura V-Groove's ultra-durable panels are resistant to fire, wind, pests, moisture, and rot. They feature a sophisticated look with deep shadow lines that are perfect for multifamily and light commercial construction.



LATURA V-GROOVE Custom Color



LATURA V-GROOVE White



# Modern Series

ARCHITECTURALBLOCK Tuscan | RIBBED Custom Color

## Take modern to the next level with distinct textures and tones.

Textured and colored to evoke the look, feel, and mass of stone block, ArchitecturalBlock and TuffBlock contrast beautifully with glass. ArchitecturalBlock features a micro-embossed grain in your choice of three earth tones. TuffBlock's texture is more pronounced and is available in five standard earthy shades as well as custom colors.

### ARCHITECTURALBLOCK



MOCHA



GRAY

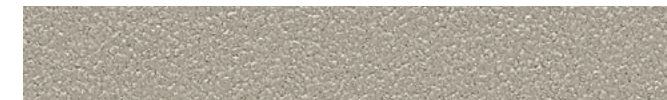


TUSCAN

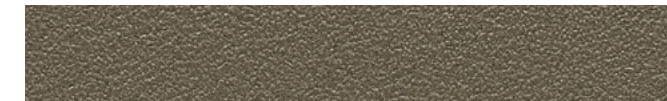
### TUFFBLOCK



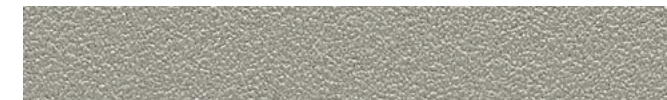
STEEL



BAMBOO



WALNUT



PEWTER

### ARCHITECTURALBLOCK SPECS

AWP 1818

DIMENSIONS (ACTUAL MM)	17-7/8" H x 71-9/16" L (455MM H x 1818MM L)
THICKNESS (ACTUAL MM)	5/8" (16MM)
WEIGHT (LBS. PER PANEL)	39.71
WEIGHT (LBS. PER SQ. FT.)	4.47
EXPOSED COVERAGE (SQ. FT. PER PANEL)	8.88 SQ. FT.
PACKAGING (PIECES PER PACK)	2 [17.76 SQ. FT.]

### TUFFBLOCK SPECS

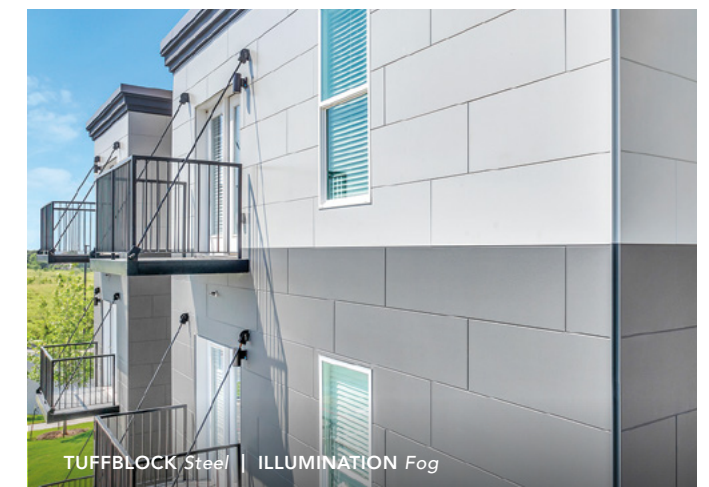
AWP 1818

DIMENSIONS (ACTUAL MM)	17-7/8" H x 71-9/16" L (455MM H x 1818MM L)
THICKNESS (ACTUAL MM)	5/8" (16MM)
WEIGHT (LBS. PER PANEL)	39.71
WEIGHT (LBS. PER SQ. FT.)	4.47
EXPOSED COVERAGE (SQ. FT. PER PANEL)	8.88 SQ. FT.
PACKAGING (PIECES PER PACK)	2 [17.76 SQ. FT.]

**CUSTOM HUES MEET MODERN DESIGN**  
With Color Xpressions, TuffBlock is available in an array of custom colors. Learn more on page 6.



ARCHITECTURALBLOCK Gray



TUFFBLOCK Steel | ILLUMINATION Fog



# Wood Series

VINTAGEWOOD Cedar

## All the natural beauty of real wood. Without all of the maintenance.

With 13 styles and colors, the Wood Series is our largest and most popular product line. Built to last, our Wood Series panels offer the rich textures of wood, color stability, and extreme weather resistance.

VintageWood exudes modern refinement, works well in both modern and traditional designs, and pairs perfectly with glass and block panels, adding a touch of warmth to the coolness of these materials. Plus, VintageWood can be installed vertically or horizontally, offering even more design options.

### VINTAGEWOOD



BARK



ASH



CEDAR



SPRUCE



REDWOOD



POPLAR



BLACKWOOD

#### VINTAGEWOOD SPECS

#### AWP 1818

#### AWP 3030

DIMENSIONS (ACTUAL MM)	17-7/8" H x 71-9/16" L (455MM H x 1818MM L)	17-7/8" H x 119-5/16" L (455MM H x 3030MM L)
THICKNESS (ACTUAL MM)	5/8" (16MM)	5/8" (16MM)
WEIGHT (LBS. PER PANEL)	38.76	64.60
WEIGHT (LBS. PER SQ. FT.)	4.36	4.36
EXPOSED COVERAGE (SQ. FT. PER PANEL)	8.88 SQ. FT.	14.81 SQ. FT.
PACKAGING (PIECES PER PACK)	2 [17.76 SQ. FT.]	2 [29.62 SQ. FT.]

AWP 1818 CAN ONLY BE INSTALLED HORIZONTALLY.

AWP 3030 CAN BE INSTALLED HORIZONTALLY OR VERTICALLY.



VINTAGEWOOD Ash



VINTAGEWOOD Cedar + Bark

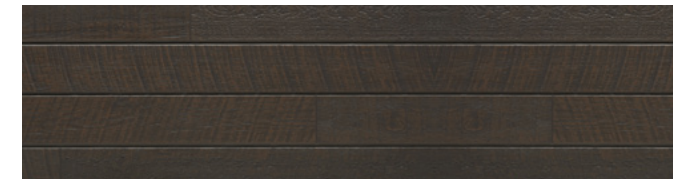


RIFTSAWN Chestnut

## Rustic has never been so sophisticated.

With its earthy appeal and rich texture, RiftSawn and RoughSawn add rustic flair to a project. They showcase the ridges, grooves, and textures of natural wood while maintaining a consistent length that is easy to work with. RiftSawn is unique in the Wood Series with its full panel design, which incorporates a darker edge to create the look of a reveal.

### ROUGHSAWN



ESPRESSO



TOBACCO



SMOKE

ROUGHSAWN SPECS	AWP 3030
DIMENSIONS (ACTUAL MM)	17-7/8" H x 119-5/16" L (455MM H x 3030MM L)
THICKNESS (ACTUAL MM)	5/8" (16MM)
WEIGHT (LBS. PER PANEL)	64.60
WEIGHT (LBS. PER SQ. FT.)	4.36
EXPOSED COVERAGE (SQ. FT. PER PANEL)	14.81 SQ. FT.
PACKAGING (PIECES PER PACK)	2 [29.62 SQ. FT.]

 AWP 3030 CAN BE INSTALLED HORIZONTALLY OR VERTICALLY.

### RIFTSAWN



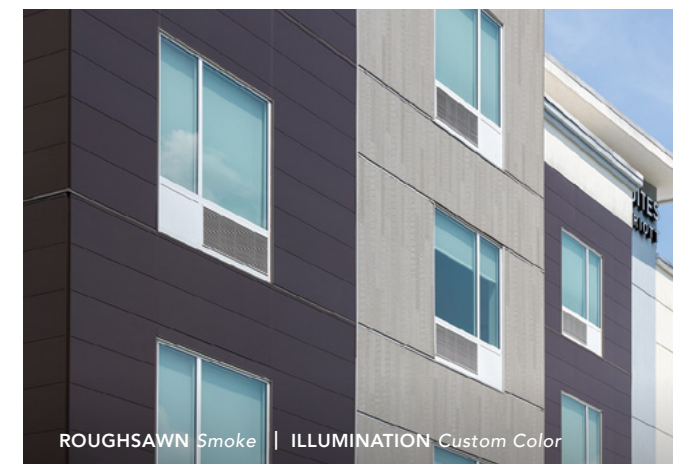
PECAN



CHESTNUT

RIFTSAWN SPECS	AWP 1818
DIMENSIONS (ACTUAL MM)	17-7/8" H x 71-9/16" L (455MM H x 1818MM L)
THICKNESS (ACTUAL MM)	3/4" (18MM)
WEIGHT (LBS. PER PANEL)	43.61
WEIGHT (LBS. PER SQ. FT.)	4.91
EXPOSED COVERAGE (SQ. FT. PER PANEL)	8.88 SQ. FT.
PACKAGING (PIECES PER PACK)	2 [17.76 SQ. FT.]

 AWP 1818 CAN ONLY BE INSTALLED HORIZONTALLY.



ROUGHSAWN Smoke | ILLUMINATION Custom Color

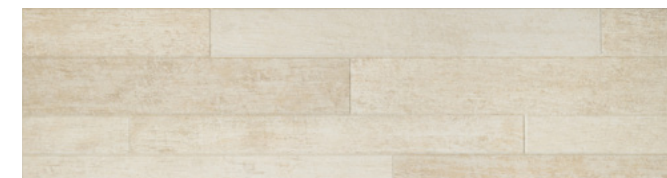


RIFTSAWN Pecan



NATURA *Rustic White* | RIBBED *Ivory* | ILLUMINATION *Custom Color*

NATURA



RUSTIC WHITE

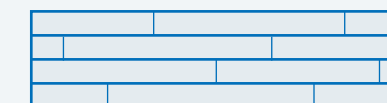
NATURA SPECS	AWP 1818
DIMENSIONS (ACTUAL MM)	17-7/8" H x 71-9/16" L (455MM H x 1818MM L)
THICKNESS (ACTUAL MM)	5/8" (16MM)
WEIGHT (LBS. PER PANEL)	40.1
WEIGHT (LBS. PER SQ. FT.)	4.5
EXPOSED COVERAGE (SQ. FT. PER PANEL)	8.88 SQ. FT.
PACKAGING (PIECES PER PACK)	2 [17.76 SQ. FT.]

AT A GLANCE

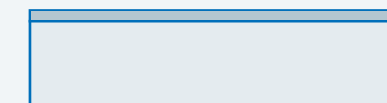
Here's a look at the differences between our Wood Series products.



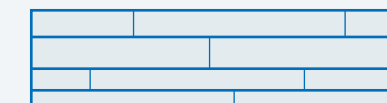
VINTAGEWOOD | AWP 1818 & AWP 3030  
Three planks, full width of panel



ROUGHSAWN | AWP 3030 only  
Four planks, consistent heights but staggered horizontally



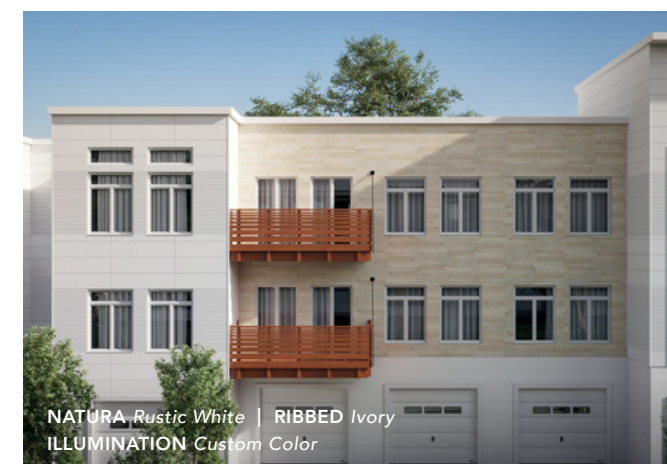
RIFTSAWN | AWP 1818 only  
One plank with a darker reveal at the top



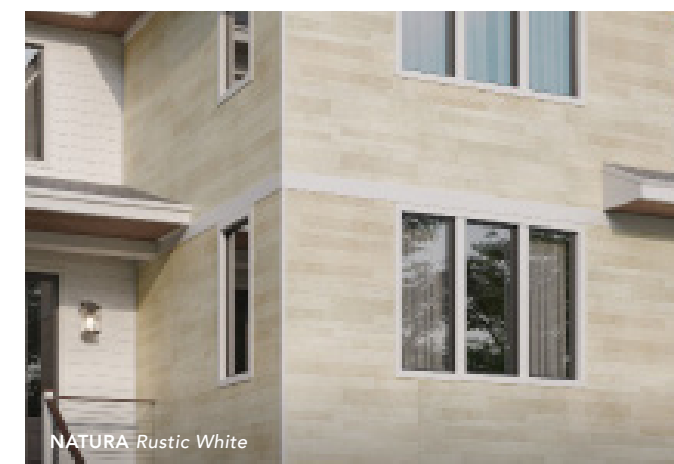
NATURA | AWP 1818 only  
Four planks, varied heights and staggered horizontally

## Let your imagination drift.

Natura layers creamy white and tan tones reminiscent of driftwood. Its pattern is unique in the Wood Series, with each panel showcasing four planks of varying heights and a staggered horizontal pattern. With Natura, you enjoy the same benefits as any of our Architectural Wall Panels—easy installation; ultra-durability; and resistance to fire, wind, and pests.



NATURA *Rustic White* | RIBBED *Ivory*  
ILLUMINATION *Custom Color*



NATURA *Rustic White*



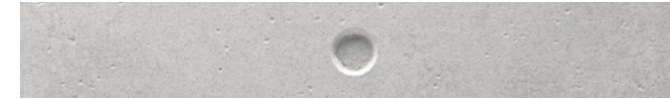
# Concrete Series

INDUSTRIALBLOCK | ILLUMINATION Custom Color

## Take concrete to new places.

Designed to mimic the natural textures and colors of concrete, our lightweight panels eliminate curing time, cracking, and color inconsistency associated with concrete. IndustrialBlock offers a distressed look, while EmpireBlock features a unique dimple that ups the industrial chic, and Corbosa evokes the look of wet concrete. Plus, IndustrialBlock and EmpireBlock can be installed both vertically and horizontally depending upon your design objectives.

### EMPIREBLOCK



#### EMPIREBLOCK SPECS & INDUSTRIALBLOCK SPECS

##### DIMENSIONS (ACTUAL MM)

THICKNESS (ACTUAL MM)

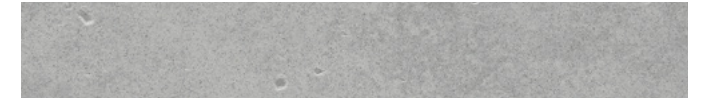
WEIGHT (LBS. PER PANEL)

WEIGHT (LBS. PER SQ. FT.)

EXPOSED COVERAGE (SQ. FT. PER PANEL)

PACKAGING (PIECES PER PACK)

### INDUSTRIALBLOCK



#### AWP 3030

17-7/8" H x 119-5/16" L  
(455MM H x 3030MM L)

5/8" (16MM)

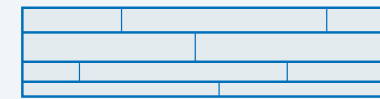
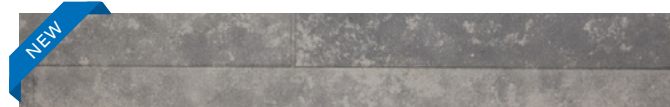
66.18

4.47

14.81 SQ. FT.

2 [29.62 SQ. FT.]

### CONCRETEBOARD



CONCRETEBOARD | AWP 1818 only  
Four planks, varied heights and staggered horizontally

#### CONCRETE BOARD SPECS

#### AWP 1818

DIMENSIONS (ACTUAL MM)

17-7/8" H x 71-9/16" L  
(455MM H x 1818MM L)

THICKNESS (ACTUAL MM)

5/8" (16MM)

WEIGHT (LBS. PER PANEL)

40.1

WEIGHT (LBS. PER SQ. FT.)

4.5

EXPOSED COVERAGE (SQ. FT. PER PANEL)

8.88 SQ. FT.

PACKAGING (PIECES PER PACK)

2 [17.76 SQ. FT.]

### CORBOSA



#### MOONDUST



#### SHADOW

AWP 1818 CAN ONLY BE INSTALLED HORIZONTALLY.

#### CORBOSA SPECS

#### AWP 1818

DIMENSIONS (ACTUAL MM)

17-7/8" H x 71-9/16" L  
(455MM H x 1818MM L)

THICKNESS (ACTUAL MM)

5/8" (16MM)

WEIGHT (LBS. PER PANEL)

40.1

WEIGHT (LBS. PER SQ. FT.)

4.5

EXPOSED COVERAGE (SQ. FT. PER PANEL)

8.88 SQ. FT.

PACKAGING (PIECES PER PACK)

2 [17.76 SQ. FT.]



EMPIREBLOCK



CORBOSA Shadow



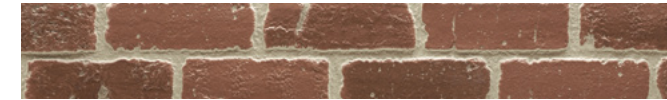
# Brick Series

PLYMOUTHBRICK | SANDSTONE *Desert Beige*

## The universal appeal of brick, minus the hassle.

Subtle color variations, a stately presentation, grout lines, solid looks and feel. It's all there in the Brick Series. Thanks to a proprietary multi-layered coating process, the beauty of brick is built to last in these wall panels. With five styles to select from, enjoy the freedom to create the brick exterior of your choosing without the extra cost, specialized labor, or hassle.

### VINTAGEBRICK



ALEXANDRIA BUFF



WHITE WASH

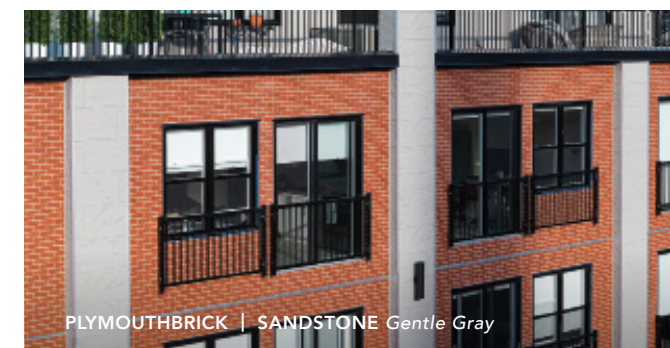
VINTAGEBRICK SPECS	AWP 1818
DIMENSIONS (ACTUAL MM)	17-7/8" H x 71-9/16" L (455 MM H x 1818 MM L)
THICKNESS (ACTUAL MM)	3/4" (18 MM)
WEIGHT (LBS. PER PANEL)	42.54
WEIGHT (LBS. PER SQ. FT.)	4.79
EXPOSED COVERAGE (SQ. FT. PER PANEL)	8.88 SQ. FT.
PACKAGING (PIECES PER PACK)	2 [17.76 SQ. FT.]

### CANYONBRICK



SHALE BROWN

CANYONBRICK SPECS	AWP 1818
DIMENSIONS (ACTUAL MM)	17-7/8" H x 71-9/16" L (455 MM H x 1818 MM L)
THICKNESS (ACTUAL MM)	5/8" (16 MM)
WEIGHT (LBS. PER PANEL)	37.82
WEIGHT (LBS. PER SQ. FT.)	4.26
EXPOSED COVERAGE (SQ. FT. PER PANEL)	8.88 SQ. FT.
PACKAGING (PIECES PER PACK)	2 [17.76 SQ. FT.]



PLYMOUTHBRICK | SANDSTONE *Gentle Gray*

### PLYMOUTHBRICK



CRIMSON

Get the classic look of kiln-fired brick with the modern strength of PlymouthBrick panels.

PLYMOUTHBRICK SPECS	AWP 1818
DIMENSIONS (ACTUAL MM)	17-7/8" H x 71-9/16" L (455 MM H x 1818 MM L)
THICKNESS (ACTUAL MM)	5/8" (16 MM)
WEIGHT (LBS. PER PANEL)	38.76
WEIGHT (LBS. PER SQ. FT.)	4.36
EXPOSED COVERAGE (SQ. FT. PER PANEL)	8.88 SQ. FT.
PACKAGING (PIECES PER PACK)	2 [17.76 SQ. FT.]

### MODERNBRICK



MIDNIGHT

MODERNBRICK SPECS	AWP 1818
DIMENSIONS (ACTUAL MM)	17-7/8" H x 71-9/16" L (455 MM H x 1818 MM L)
THICKNESS (ACTUAL MM)	5/8" (16 MM)
WEIGHT (LBS. PER PANEL)	38.76
WEIGHT (LBS. PER SQ. FT.)	4.36
EXPOSED COVERAGE (SQ. FT. PER PANEL)	8.88 SQ. FT.
PACKAGING (PIECES PER PACK)	2 [17.76 SQ. FT.]



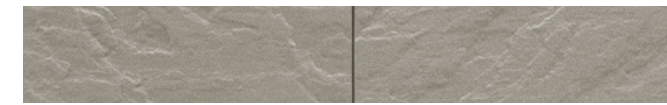
MODERNBRICK



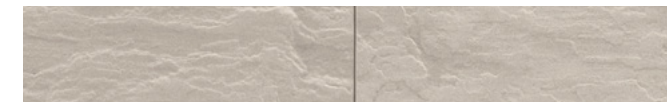
# Masonry Series

SANDSTONE Desert Beige

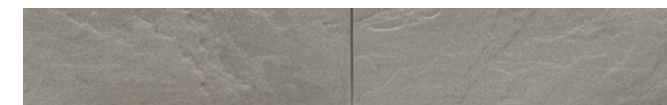
## SANDSTONE



AUTUMN BROWN

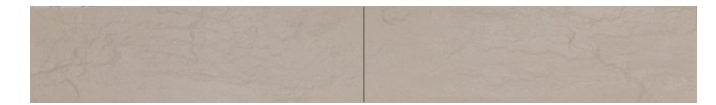


DESERT BEIGE

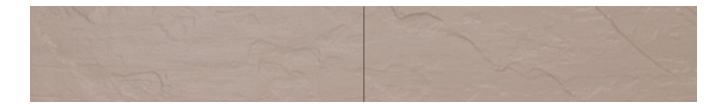


GENTLE GRAY

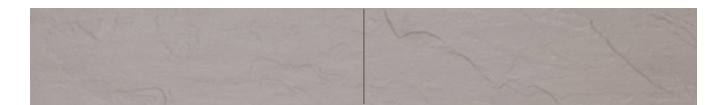
## POLISHED SANDSTONE



PARCHMENT



DUST



MISTY GRAY

SANDSTONE SPECS	AWP 1818
DIMENSIONS (ACTUAL MM)	17-7/8" H x 71-9/16" L (455MM H x 1818MM L)
THICKNESS (ACTUAL MM)	3/4" (18MM)
WEIGHT (LBS. PER PANEL)	39.7
WEIGHT (LBS. PER SQ. FT.)	4.47
EXPOSED COVERAGE (SQ. FT. PER PANEL)	8.88 SQ. FT.
PACKAGING (PIECES PER PACK)	2 [17.76 SQ. FT.]

POLISHED SANDSTONE SPECS	AWP 1818
DIMENSIONS (ACTUAL MM)	17-7/8" H x 71-9/16" L (455MM H x 1818MM L)
THICKNESS (ACTUAL MM)	3/4" (18MM)
WEIGHT (LBS. PER PANEL)	43.61
WEIGHT (LBS. PER SQ. FT.)	4.91
EXPOSED COVERAGE (SQ. FT. PER PANEL)	8.88 SQ. FT.
PACKAGING (PIECES PER PACK)	2 [17.76 SQ. FT.]

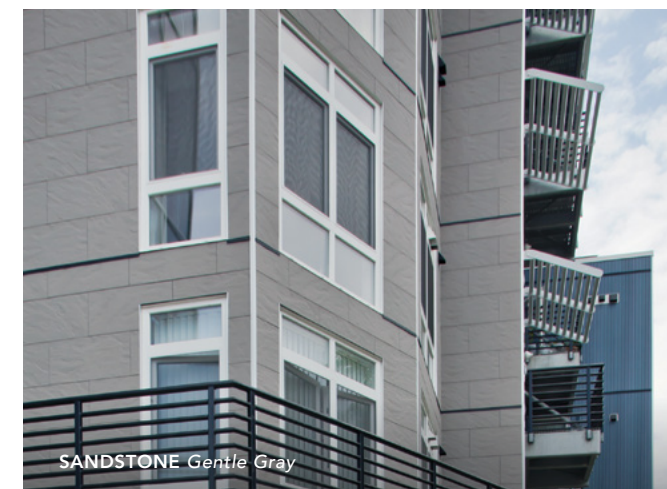


**NO MORTAR, NO MESS**

Prefinished panels eliminate the need for messy mortar or costly masonry-skilled labor, while still providing a textured finish and enduring design aesthetic.

## The beauty of solid stone at a fraction of the price.

The Masonry Series makes grandeur attainable for virtually any building. With its subtle color and deep texture, Sandstone imparts a traditional aesthetic. Covering approximately nine square feet per panel, installation takes a fraction of the time required by masonry contractors. Plus, it's available in three color variations, each offered in two complementary finishes, giving you even more options for customization.



SANDSTONE Gentle Gray



SANDSTONE Desert Beige | VINTAGEWOOD Bark

## ESSENTIAL FLASHING

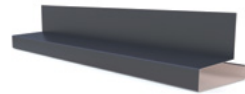
Create a clean, polished look for your building with the highest level of precision.



### COMPRESSION JOINT FLASHING (10')

Used in conjunction with Ultimate Horizontal/Vertical Starter Tracks at floor joists in buildings that require compression joints. Can be painted or powder coated to match panels.

THICKNESS	10MM
PACKAGING (LN. FT. PER TUBE)	50



### OVERHANG FLASHING (10') - JOH7288

Used at the base of overhangs, bump-outs or porte-cochères.

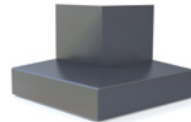
THICKNESS	10MM
PACKAGING (LN. FT. PER BOX)	40



### OVERHANG FLASHING INSIDE CORNER - JOH7288D

Used in conjunction with Overhang Flashing at inside corners.

THICKNESS	10MM
PACKAGING (PCS PER PACK)	2



### OVERHANG FLASHING OUTSIDE CORNER - JOH7288B

Used in conjunction with Overhang Flashing at outside corners.

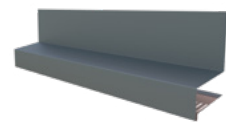
THICKNESS	10MM
PACKAGING (PCS PER PACK)	2



### OVERHANG FLASHING CLIP - JOH7288S

Placed at seams where Overhang Flashing and corners meet.

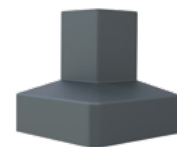
THICKNESS	10MM
PACKAGING (PCS PER PACK)	1



### STARTER FLASHING (10') - FTD4788

Used in conjunction with the Ultimate Horizontal/Vertical Starter Tracks at the bottom of a building.

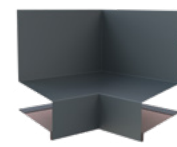
THICKNESS	10MM
PACKAGING (LN. FT. PER BOX)	50



### STARTER FLASHING OUTSIDE CORNER - FTD4788B

Used in conjunction with Starter Flashing at outside corners.

THICKNESS	10MM
PACKAGING (PCS PER PACK)	4



### STARTER FLASHING INSIDE CORNER - FTD4788D

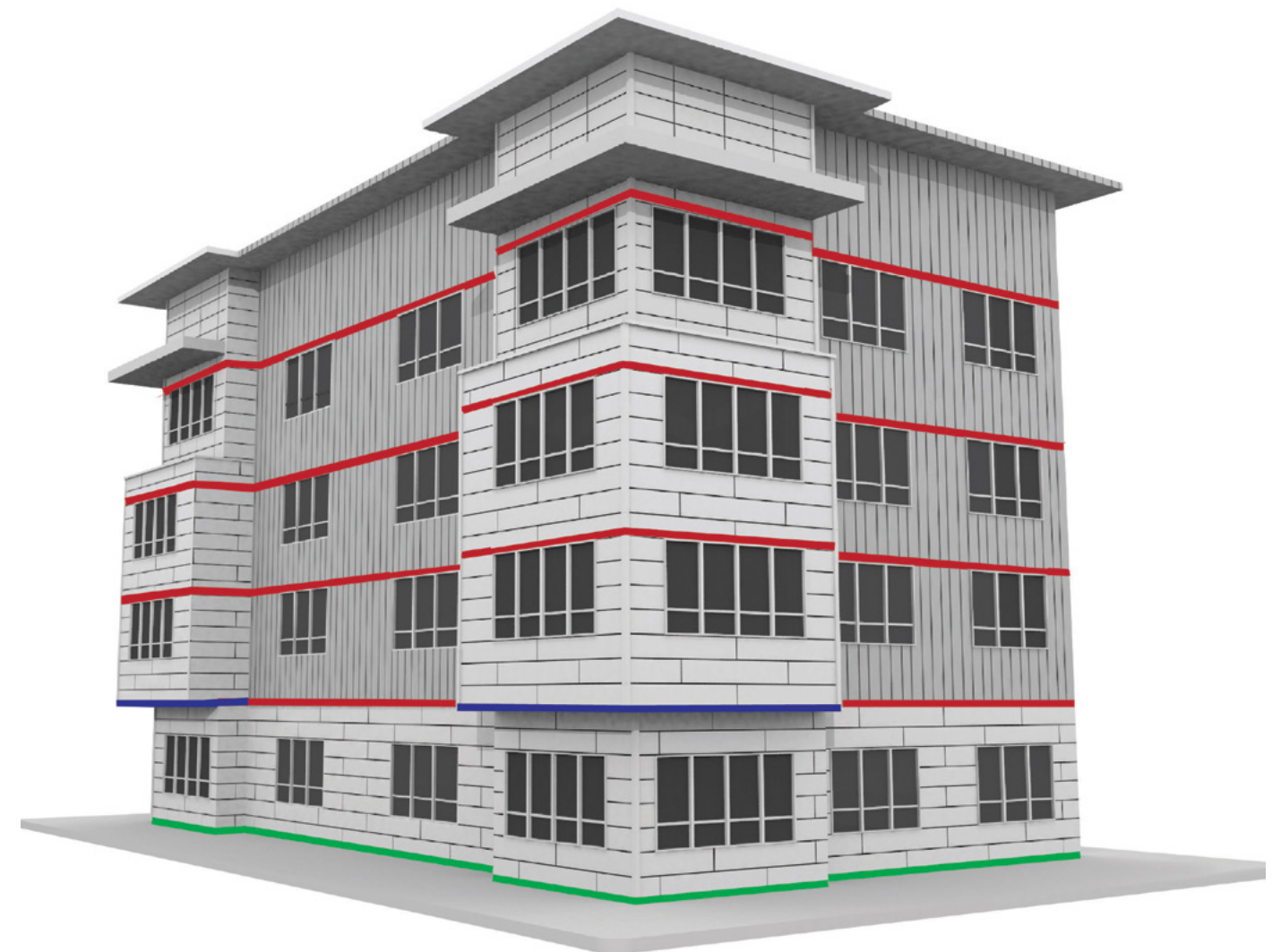
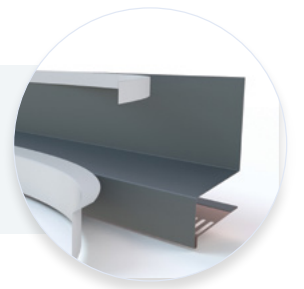
Used in conjunction with Starter Flashing at inside corners.

THICKNESS	10MM
PACKAGING (PCS PER PACK)	4

NOTES: EACH COMPONENT OF ESSENTIAL FLASHING IS SOLD SEPARATELY; STARTER AND OVERHANG FLASHING IS AVAILABLE IN BLACK ONLY.

\*This accessory is designed for use in the prescribed manner with designated Nichiha products only. Use with other products or in other manners is not warranted.

Nichiha takes accessory protection to the next level with a **removable film layer**. Once installed, simply peel off the film to reveal blemish-free fixtures.



Our starter flashing serves a dual role — ensuring your project is polished to perfection, and operating as a bug screen to keep annoying pests away.

## INSTALLATION HARDWARE

Easily take your vision from the drawing board to reality.



### ULTIMATE CLIP II WITH JOINT TAB ATTACHMENT - JEL778\* & JEL788\*\*

Creates a hidden fastening system that all but eliminates face fastening. The joint tab helps support panel lateral stability.

THICKNESS	10MM
PACKAGING (PCS PER BOX)	30



### ULTIMATE HORIZONTAL STARTER TRACK (10') - FA700

Ensures a fast, level installation. Its patented drainage channel directs water out and away from the base of the wall.

THICKNESS	10MM
PACKAGING (LN. FT. PER BOX)	100



### ULTIMATE VERTICAL STARTER TRACK (10') - FA710T

Ensures a fast, level installation with 3030 panels. Its patented drainage channel directs water out and away from the base of the wall.

THICKNESS	10MM
PACKAGING (LN. FT. PER BOX)	100



### SINGLE FLANGE SEALANT BACKER (6.5') - FHK1015R

Used for vertical jambs at doors and windows and at inside corners of the building.

THICKNESS	10MM
PACKAGING (LN. FT. PER BOX)	65



### DOUBLE FLANGE SEALANT BACKER (10') - FH1015R

Used for vertical expansion joints. Placed at the end of each 3030 panel, and every 30' with 1818 panels and with the preformed outside corner.

THICKNESS	10MM
PACKAGING (LN. FT. PER BOX)	100



### CORRUGATED SHIM (4') - FS1005 & FS1010

Used for face fastening where required (top of building, doors, windows, etc.)

THICKNESS (FS1005)	5MM
THICKNESS (FS1010)	10MM
PACKAGING (LN. FT. PER BOX)	200



### CORNER CLIP - JE777C\* & JE787C\*\*

Corner clip for the preformed Nichiha fiber cement corners.

THICKNESS	10MM
PACKAGING (PCS PER BOX)	6



### CORNERS

Prefinished corners are used in conjunction with horizontal panel installation.

17 7/8"H x 3-1/2" [face]
1818MM H x 88.9MM [face]

\*JEL778 and JE777C are compatible with all panels except SandStone and VintageBrick.

\*\*JEL788 and JE787C are compatible with SandStone and VintageBrick only.

\*\*\*This accessory is designed for use in the prescribed manner with designated Nichiha products only. Use with other products or in other manners is not warranted.

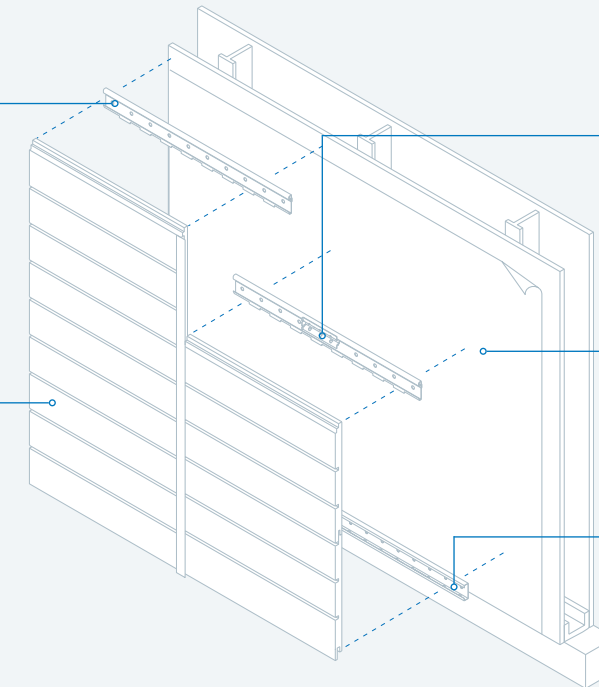
## Efficient installation. Rainscreen performance.

### THE ULTIMATE CLIP

creates a hidden fastening system that all but eliminates face fastening. Installation is quick and easy and never requires specialty subcontractors.

### NICHIHA ARCHITECTURAL WALL PANELS

are lightweight, easy to handle, and available in a virtually endless color palette and a diverse offering of textural finishes.



### NICHIHA'S JOINT TAB ATTACHMENT

is designed to support panel lateral stability, helping vertical joints stay tightly closed. The tab fits in place easily and is fastened to the Ultimate Clip with provided screw.

### DRAINED AND BACK-VENTILATED RAINSCREEN

design allows water to escape and air to circulate, reducing the risk of mold and water damage inside the building.

### THE ULTIMATE STARTER TRACK

pulls double duty. It ensures a fast, level installation, and its patented drainage channel directs water out and away from the base of the wall.

### ✓ EASY INSTALLATION

Time-saving clip installation system that reduces construction time and minimizes mistakes.



### NO MORTAR, NO MESS

Prefinished panels eliminate the need for messy mortar or costly masonry-skilled labor.



### ANY-WEATHER PRODUCT

Products can be installed year round in any climate across the country. No geographical restrictions mean more possibilities.



### LOW MAINTENANCE

No-fuss products. Little ongoing cleaning or regular maintenance needed. Bring your vision to life and ensure it looks great for years to come.

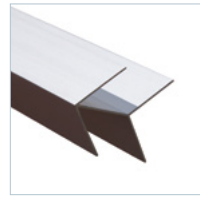


### ENGINEERED FOR PERFORMANCE

Go beyond our durable panels and discover a meticulously engineered moisture management system that provides a vertical drainage point for air and moisture to exit.

## METAL ONE-PIECE TRIM

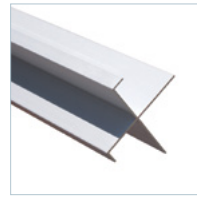
With our customized metal trim, your project practically finishes itself.



### CORNER KEY

Extrusion used at outside corners instead of a preformed corner. A vertical expansion joint is required 2' to 12' from the corner when using this corner.

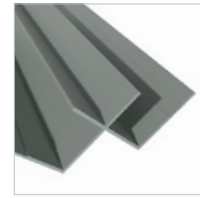
DIMENSIONS (NOM. FT. ~ ACTUAL MM)	3" x 10' (76.2MM x 3030MM)
PACKAGING (LN. FT. PER TUBE)	50



### OPEN OUTSIDE CORNER

Extrusion used at outside corners instead of a preformed corner. A vertical expansion joint is required 2' to 12' from the corner when using this corner.

DIMENSIONS (NOM. FT. ~ ACTUAL MM)	2.96" x 10' (75MM x 3030MM)
PACKAGING (LN. FT. PER TUBE)	50



### INSIDE CORNER

Used where two Nichiha panels meet in an inside corner; alternative to Single Flange Sealant Backer with sealant.

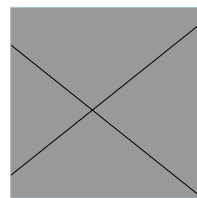
DIMENSIONS (NOM. FT. ~ ACTUAL MM)	3.4" x 10' (86.4MM x 3030MM)
PACKAGING (LN. FT. PER TUBE)	50



### H-MOLD

Can be used at the end of 3030 panels instead of the Double Flange Sealant Backer, but not at the preformed outside corners.

DIMENSIONS (NOM. FT. ~ ACTUAL MM)	2" x 10' (50.8MM x 3030MM)
PACKAGING (LN. FT. PER TUBE)	50



### J-MOLD

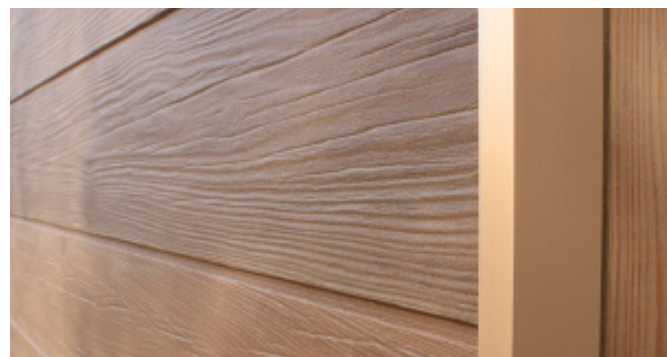
Can be used instead of Single Flange Sealant Backer at vertical jambs for doors and windows, but not at the inside corners of the building.

DIMENSIONS (NOM. FT. ~ ACTUAL MM)	0.375" x 10' (9.5MM x 3030MM)
PACKAGING (LN. FT. PER TUBE)	50



### Our trim gives you options

All of our metal trim is available in four finishes: primed, clear anodized, powder coated, or custom color. For pricing and lead times, view our price catalog at [nichiha.com/price-catalog](http://nichiha.com/price-catalog).



For popular panels like VintageWood, we've made ordering easier by color matching all of our trim profiles for faster delivery.



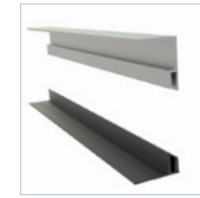
Thanks to our Color Xpressions system, Nichiha can customize trim to match any color you use on custom color panels.



\*This accessory is designed for use in the prescribed manner with designated Nichiha products only. Use with other products or in other manners is not warranted.

## NEW METAL TWO-PIECE TRIM

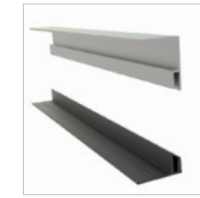
Introducing our new Two-Piece Trim—engineered for easier installation, done in a snap.



### J-MOLD

For use around window and door jambs, ideal for tight-fit situations.

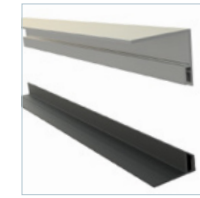
DIMENSIONS (NOM. FT. ~ ACTUAL MM)	1.25" x 10' (86.4MM x 3030MM)
PACKAGING (LN. FT. PER TUBE)	50



### DEEP-J

For use with a 7/8" furring system behind our panels.

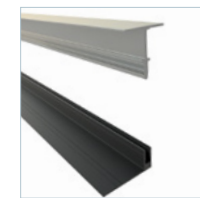
DIMENSIONS (NOM. FT. ~ ACTUAL MM)	2.1" x 10' (53.34MM x 3030MM)
PACKAGING (LN. FT. PER TUBE)	50



### T-CAP MOLD

Conceals face fasteners along the bottom of openings such as windows and where panel meets soffit.

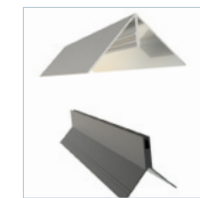
DIMENSIONS (NOM. FT. ~ ACTUAL MM)	1.5" x 10' (38.1MM x 3030MM)
PACKAGING (LN. FT. PER TUBE)	50



### H-MOLD

Provides a smooth seam for vertical joints. Can be used as an expansion joint for both 1818 and 3030 panels for a no-sealant install.

DIMENSIONS (NOM. FT. ~ ACTUAL MM)	1.35" x 10' (34.3MM x 3030MM)
PACKAGING (LN. FT. PER TUBE)	50



### CORNER KEY

Easy corners with a 2 1/4" reveal to cover face fasteners for vertical installations.

DIMENSIONS (NOM. FT. ~ ACTUAL MM)	2.25" x 10' (57.2MM x 3030MM)
PACKAGING (LN. FT. PER TUBE)	50



### COMPRESSION Z-FLASHING

Allows the base to be installed first and the cover cap to be installed at a later time. Ideal for modular and factory applications, but can be used in other applications.

DIMENSIONS (NOM. FT. ~ ACTUAL MM)	4" x 10' (101.6MM x 3030MM)
PACKAGING (LN. FT. PER TUBE)	50



Nichiha's two-piece metal trim system provides a solution for corners, penetrations, transitions, and vertical joints, while maintaining a clean, consistent finish.

\*This accessory is designed for use in the prescribed manner with designated Nichiha products only. Use with other products or in other manners is not warranted.



## Pro resources at your fingertips.

Whether you are an architect, contractor, installer, or builder, Nichiha ensures that you have all the information you need to make your project go as smoothly as possible. Our website offers a comprehensive collection of technical information, installation videos, architectural details, in-depth specifications, and everything you need to know about installing Nichiha products.



Scan here to visit our resource center.

## Warranties and certifications.

- ARCHITECTURAL WALL PANELS
  - 15-year limited warranty\* on panels
  - 15-year limited warranty\* on finish
- METAL TRIM
 

TAMLYN warrants defective-free products for a period of 10 years for the original purchaser. Please visit [tamlyn.com](http://tamlyn.com) for detailed information on terms, conditions, and limitations.



Report No. EC-58



CCRR-0299



Report No. FL12875  
No. FL12812



Canada CCMC 14366-R



WUI 8140-2029



NOA 21-0312.11



National Fire Protection Association (NFPA)



Build America, Buy America Compliant



Verified



Verified

\*See Nichiha warranties for detailed information on terms, conditions, and limitations. Visit [nichiha.com](http://nichiha.com) for easily downloadable warranties, or call toll-free 1.866.424.4421 for a copy. Nichiha MSDS is available at [nichiha.com](http://nichiha.com), at your local Nichiha dealer, or call Nichiha direct toll-free 1.866.424.4421.

SILICA DUST WARNING: Nichiha products may contain some amounts of crystalline silica (a.k.a. sand, silicon dioxide), which is a naturally occurring mineral. The amount will vary from product to product. Inhalation of crystalline silica into the lungs and repeated exposure to silica can cause health disorders, such as silicosis, lung cancer, or death depending upon various factors. To be conservative, Nichiha recommends that whenever cutting, sawing, sanding, sniping, or abrading the product, users observe safety instructions. For further information or questions, please consult the MSDS, your employer, or visit [www.osha.gov/SLTC/silicacrystalline/index.html](http://www.osha.gov/SLTC/silicacrystalline/index.html) and [www.cdc.gov/niosh/topics/silica](http://www.cdc.gov/niosh/topics/silica). The MSDS for Nichiha products are available at [www.nichiha.com](http://www.nichiha.com), at your local Nichiha dealer, or through Nichiha directly at 1.866.424.4421. FAILURE TO ADHERE TO OUR WARNINGS, MSDS, AND OTHER INSTRUCTION MAY LEAD TO SERIOUS PERSONAL INJURY OR DEATH.

6465 E. JOHNS CROSSING, SUITE 250, JOHNS CREEK, GA 30097 | 866.424.4421 | [NICHIIA.COM](http://NICHIIA.COM)

NOTE: Printed material may not accurately depict actual product color. Printed in the USA.



FIND YOUR  
A-HA MOMENT



[NICHHA.COM](https://www.nichiha.com)

©2024 Nichiha USA, Inc. All rights reserved. V11.24