



SEAL, STAIN AND PROTECT CONCRETE

ACRYL *pen*

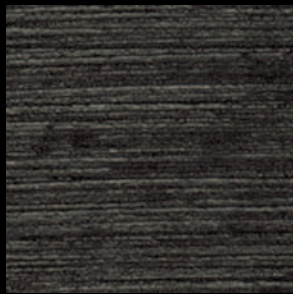
Penetrating water-repellent sealer and stain

nox-crete[™]

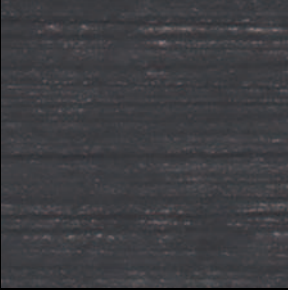
chemical solutions to [concrete](#) problems



AMBER



BLACK



CHARCOAL GRAY



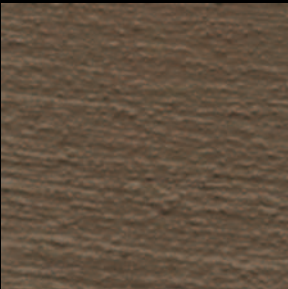
CUB BROWN



LIGHT BROWN



LIGHT CONCRETE GRAY



MEDIUM BROWN



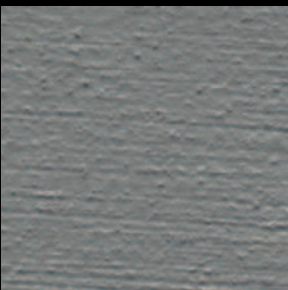
RED



TERRA COTTA



WALNUT



DENVER GRAY

**11 STANDARD
COLORS**

**CUSTOM COLORS
AVAILABLE**

The Chemistry Of Acryl Pen

Acryl Pen contains a low molecular weight methyl methacrylate acrylic resin, reactive silane and non-fading inorganic pigments. This unique chemistry penetrates concrete micro-pores for integral protection. A chemical reaction occurs between Acryl Pen and concrete, forming a hydrophobic barrier that prevents moisture entry and seals the surface for extended life.



User-Friendly Application and Maintenance

Apply Acryl Pen to clean, dry concrete using a brush, roller or airless sprayer. Two coats will provide optimum performance and no additional sealing is necessary.

Surfaces are usually tack free in less than 30 minutes and ready for full use after 72 hours.

Acryl Pen treated surfaces resist staining and require little maintenance.

Consult the full product data sheet for detailed application instructions.

ACRYL *pen*

Penetrating water-repellent sealer and stain for exterior, horizontal concrete.



Achieve vibrant, long-lasting color and protection for horizontal concrete surfaces with Acryl Pen. Use one or multiple colors to attain the design and look you want. The integrity of Acryl Pen color will outlast acid staining and is resistant to fading or darkening from environmental exposure. No secondary sealer required, making application simple!

- Vibrant color is **U.V. resistant** and will not fade, chalk or peel.
- Penetrating formula **seals and protects** from within concrete.
- Allows concrete **surface to breathe**.
- Achieves decorative concrete at an **affordable price**.
- **Protects concrete** surfaces from food, oil and grease stains, weather and freeze/thaw damage.
- **Withstands traffic** from pedestrians and vehicles.
- For **broom and textured finish** concrete.
- **Non-slip additive** for increased slip resistance also available.

IDEAL FOR COMMERCIAL, RESIDENTIAL OR MUNICIPAL PROJECTS

Driveways

Pool/Patio Areas

Entryways

Picnic Areas

Walkways

Balconies

Arena Concourses

Shopping Malls

Food Prep Areas

Plaza Decks

Roadway Medians

And more!



ACRYL *pen*



chemical solutions to [concrete](#) problems

NOX-CRETE PRODUCTS GROUP
1444 S 20th Street, Omaha, NE 68108 USA
800-669-2738 / 402-341-2080
www.nox-crete.com