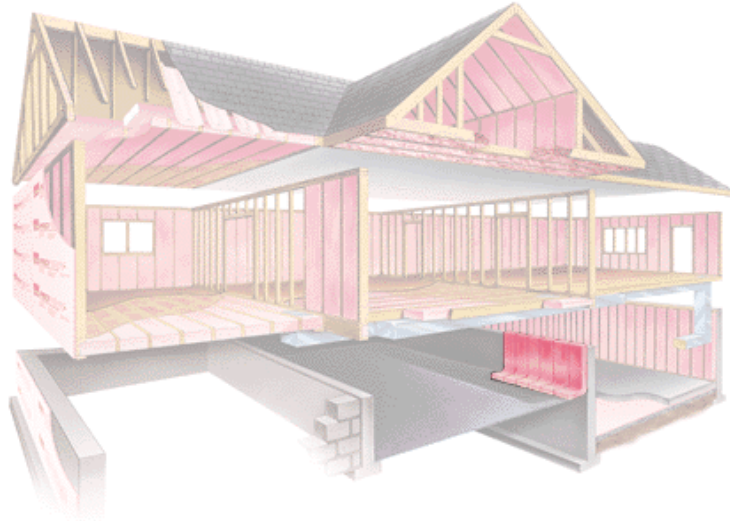




Crawlspace (heated)



In a heated crawlspace or one with uninsulated ducts or water pipes, the walls should be insulated. R-19 PINK fiber glass insulation or R-25 MIRAFLEX® insulation work best for this. MIRAFLEX R-25 insulation's poly wrapping and compact roll size make it easy to handle and install, especially in a confined area like a crawlspace.



Recommended Insulation Products:

R-19	Fiber Glass Wall Insulation, unfaced	6 1/4" Thick
MIRAFLEX R-25	Attic Crawlspace Insulation; Perforated Poly Wrap – No Vapor Retarder	8 3/4" Thick

Installation:



Always install the insulation with the vapor retarder toward the warm side of the structure in heating climates. In a vented crawlspace, the warm side is usually up, closest to the floor.



The insulation should be installed all the way back at the end of each joist run so that it touches the band joist. You want complete coverage under the house. There will usually be a narrow joist space on the walls that runs parallel to the joist. The insulation should be cut to fit this space.



There are often both pipes and wires in crawlspace floors and occasionally a junction box. Water pipes should be insulated and you will need to insulate carefully around electrical wiring and boxes.



Insulation should be placed around cross braces by cutting it and pushing it between the braces.



The insulation should be installed all the way back at the end of each joist run so that it touches the band joist. You want complete coverage under the house. There will usually be a narrow joist space on the walls that runs parallel to the joist. The insulation should be cut to fit this space.



There are often both pipes and wires in crawlspace floors and occasionally a junction box. Water pipes should be insulated and you will need to insulate carefully around electrical wiring and boxes.

© 1996 – 2002 by
Owens Corning