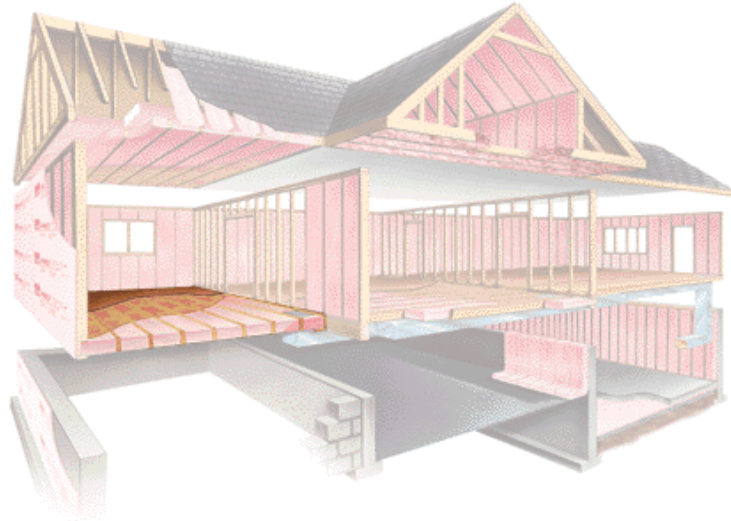




Crawlspace (Under Floor)



A lot of energy can leak through the floor, so it's important to insulate it correctly. R-19 or R-25 fiber glass batts can be installed in floor applications.



Recommended Insulation Products:

R-19	Floor Wall Fiber Glass Insulation; Faced or Unfaced	6 1/4" Thick
------	---	--------------

MIRAFLEX R-25	Attic Crawlspace Insulation; Perforated Poly Wrap – No Vapor Retarder	8 3/4" Thick
---------------	---	--------------

Installation:



1. Always install the insulation with the vapor retarder toward the warm side of the structure in heating climates. In a vented crawlspace, the warm side is usually up, closest to the floor.

2. The insulation should be installed all the way back at the end of each joist run so that it touches the band joist. You want complete coverage under the house. There will usually be a narrow joist space on the walls that runs parallel to the joist. The insulation should be cut to fit this space.



3. There are often both pipes and wires in crawlspace floors and occasionally a junction box. Water pipes should be insulated and you will need to insulate carefully around electrical wiring and boxes.

4. Insulation should be placed around cross braces by cutting it and pushing it between the braces.



5. To support the insulation, use nylon banding or metal insulation supports.

6. Install a 4- to 6-mil polyethylene ground cover to keep ground moisture from seeping up into the space. Hold the poly in place with bricks or rocks.



© 1996 – 2002 by  
Owens Corning