



**FOR THOSE  
ABOUT TO  
ROCK**

PABCO® Gypsum technical services:  
866.282.9298  
[www.PABCOgypsum.com](http://www.PABCOgypsum.com)

QuietRock® acoustical products:  
800.797.8159  
[www.QuietRock.com](http://www.QuietRock.com)

# DO MORE WITH PABCO

Explore the possibilities

[www.PABCOgypsum.com](http://www.PABCOgypsum.com)  
[www.QuietRock.com](http://www.QuietRock.com)

More information and tools at your fingertips when you need it. From product specifications, design guides, installation instructions, test reports and more, we have it all online 24-7.

## CONTACT INFORMATION

PABCO® Gypsum is a division of PABCO® building products, LLC  
PO Box 419074  
Rancho Cordova, CA 95741  
Technical Services: 866-282-9298  
[www.PABCOgypsum.com](http://www.PABCOgypsum.com)

## WE'RE ALWAYS HERE TO HELP

PABCO® Gypsum prides itself on the unsurpassed expertise that we offer our customers: architects, engineers, contractors, distributors and owners. Our team of experts are available to answer your questions and assist in the selection of the right product for your project.

## PABCO® GYPSUM TECHNICAL SERVICES

We are here for you. At PABCO® Gypsum, technical support is one of the most important services we provide to the building community. Our technical services team is staffed by some of the most experienced professionals in the field. From selecting the right product for the job to proper installation questions, our expertise is always available to you.

PABCO® Technical Support by phone . . . . . 866-282-9298  
By Email . . . . . [techservices@paccoast.com](mailto:techservices@paccoast.com)

## PABCO GYPSUM SALES TEAMS

PABCO® Gypsum and its QuietRock® product division have a sales organization of inside and outside sales professionals that are focused on your success.

Sales Support by phone . . . . . 877-449-7786  
By Email . . . . . [info@PABCOgypsum.com](mailto:info@PABCOgypsum.com)  
On the Web . . . . . [www.PABCOgypsum.com](http://www.PABCOgypsum.com)

QuietRock® acoustical products  
Sales Support by phone . . . . . 800-797-8159  
By Email . . . . . [info@QuietRock.com](mailto:info@QuietRock.com)  
On the Web . . . . . [www.QuietRock.com](http://www.QuietRock.com)

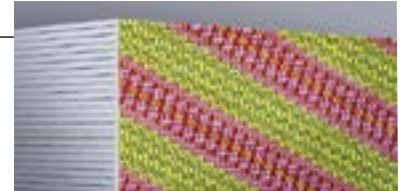


## STANDARD INTERIOR PRODUCTS

### PABCO® REGULAR

PABCO® Regular Gypsum Drywall is an interior panel composed of a naturally noncombustible, dimensionally stable, gypsum core. The core is wrapped in high quality 100% recycled facing and backing paper that will accept most decorative finishes. Regular Gypsum Wallboard is intended for non-fire rated residential construction. 1/2" Regular is sag resistant and suitable for ceiling applications.

Thickness	Type	UL Core
1/4"	Regular	N/A
3/8"	Regular	N/A
1/2"	Regular	N/A



### PABCO FLAME CURB®

PABCO FLAME CURB® family of gypsum panels are composed of a naturally noncombustible, fire-resistant gypsum core, reinforced with glass fibers that provide increased strength and enhanced fire-resistant properties. The core is wrapped in high quality 100% recycled facing and backing paper that will accept most decorative finishes. FLAME CURB® is intended for fire-rated interior walls and ceilings in residential or commercial construction.

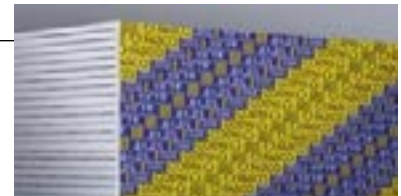
Thickness	Type	UL Core
1/2"	Super C	PC-C
5/8"	Type X	PG-11
5/8"	Type C	Type C
3/4"	Type X	PG-13



### PABCO LITECORE®

PABCO LITECORE® is a light weight, dual purpose drywall product for use on walls and ceilings. It is dimensional stability; resists sagging, buckling and warping. This panel features a naturally noncombustible gypsum core and high quality 100% recycled facing and backing paper will accept most decorative finishes. It is not intended for load bearing or fire rated assemblies.

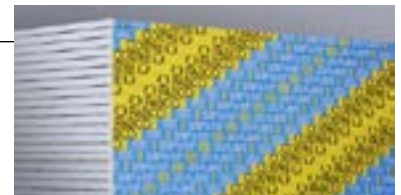
Thickness	Type	UL Core
1/2"	LiteCore	N/A



### PABCO® FLEX

PABCO FLEX™ gypsum panels are ideal for concave and convex surfaces in non-structural walls and ceilings. The unique thickness of our PABCO FLEX Drywall allows you to create a curved wall with a single layer application and feather the finish into an adjoining flat wall surface.

Thickness	Type	UL Core
3/8"	FLEX	N/A



### PABCO® INTERIOR CEILING

PABCO® INTERIOR CEILING board is designed for interior ceiling applications. PABCO INTERIOR CEILING board is manufactured with specific additives that add to its dimensional stability and significantly reduced the potential for ceiling sag. When tested to the ASTM C 473 humidified deflection test, PABCO INTERIOR CEILING board exceeds the allowable deflection permitted for 5/8" thick panels.

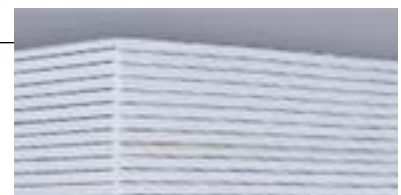
Thickness	Type	UL Core
1/2"	Regular	N/A



### PABCO® SOUND CURB

SOUND CURB™ panels with Quiet® core gypsum technology are engineered to reduce sound transmission in floor/ceiling applications. SOUND CURB™ panels are ideal for most multilevel residential or light-commercial projects where fire resistance is a primary objective and where additional mass is desired for improved Sound Transmission Class (STC) and Impact Insulation Class (IIC) performance, especially in lower frequencies where sound control is proven difficult.

Thickness	Type	UL Core
3/4"	Type X	PG-13



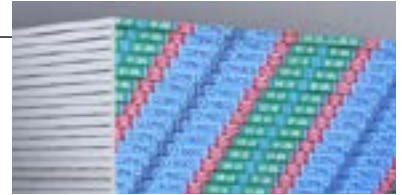


## STANDARD INTERIOR PRODUCTS

### PABCO MOLD CURB® Plus

PABCO MOLD CURB® PLUS combines the mold resistant chemistry of MOLD CURB® with the water resistant formulation of WATER CURB® to make dual mold and water resistant panel that provides the most enhanced mold and moisture protection available in a gypsum board product. MOLD CURB® PLUS is comprised of a naturally noncombustible, fire-resistant gypsum core. The core is wrapped in high quality 100% recycled facing and backing paper that is treated with mold and water resistant agents to inhibit the growth of mold and mildew. The facing paper will accept most decorative finishes.

Thickness	Type	UL Core
1/2"	Regular	N/A
5/8"	Type X	PG-5W



### PABCO ABUSE CURB®

PABCO ABUSE CURB® Type X is composed of a fire-resistant, non-combustible gypsum core that incorporated MOLD CURB® PLUS technology. ABUSE CURB® is the solution for situations where abuse-resistance, mold-resistance and water-resistance are needed. The core is encased in 100% recycled heavy mold and water-resistant paper facing and backing.

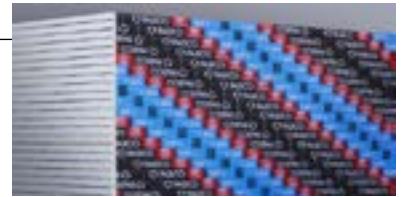
Thickness	Type	UL Core
5/8"	Type X	PG-5W



### PABCO® IMPACT RESISTANT

PABCO® Impact Resistant Drywall panel is a true super panel: Type X fire resistant, mold resistant, water resistant, abrasion resistant and impact resistant. PABCO® Impact Resistant is manufactured with a proprietary high density fire resistant Type X core that incorporates an embedded fiberglass mesh to further enhance impact resistance.

Thickness	Type	UL Core
5/8"	Type X	PG-5W



## EXTERIOR & EXPOSURE RESISTANT PRODUCTS

### PABCO GLASS® SHEATHING

PABCO GLASS® SHEATHING is ideal for commercial and residential applications where the product's performance will not be compromised due to extended exposure. PABCO GLASS® SHEATHING can withstand extended exposure to normal weather conditions, up to 1 year, during construction. The combination of our proprietary glass fiber reinforced gypsum core encased in our distinctive orange, mold-resistant coated fiberglass mat facing provides added dimensional stability that resists warping, rippling, buckling, and sagging.

Thickness	Type	UL Core
1/2"	Regular	N/A
5/8"	Type X	PGS-WRS



### PABCO GLASS® INTERIOR

PABCO GLASS® INTERIOR is a glass faced gypsum panel with a proprietary formula that provides a mold and water-resistant gypsum core. The product is reinforced with glass fibers to increase core strength and durability compared to 1/2" gypsum board. The 1/2" interior glass panel is ideal for non-fire rated interior applications where moisture is a concern such as bathrooms, kitchens, laundry rooms and basements. It can also be used in pre-rock construction as it is able to withstand exposure to normal weather conditions, up to one year, during construction.

Thickness	Type	UL Core
1/2"	Regular	N/A





## EXTERIOR & EXPOSURE RESISTANT PRODUCTS

### PABCO® GYPSUM SHEATHING

PABCO® GYPSUM SHEATHING Board is an economical moisture-resistant product and is designed for use as an exterior board providing a stable base for veneer finishing systems on residential and commercial buildings. PABCO® GYPSUM SHEATHING board has a water resistant core and water repellent paper.

Thickness	Type	UL Core
5/8"	Type X	PG-5WS



### PABCO® EXTERIOR SOFFIT

PABCO® EXTERIOR SOFFIT Board is designed for application on the underside of exterior soffits, open porches, walkways, carport ceilings and similar installations that are completely protected from contact with water. The gypsum core contains additives that enhance its ability to resist sagging. The core is wrapped in a moisture resistant paper to further increase its resistance to moisture.

Thickness	Type	UL Core
1/2"	Regular	N/A
1/2"	Super C	PG-C
5/8"	Type X	PG-11
5/8"	Type C	Type C

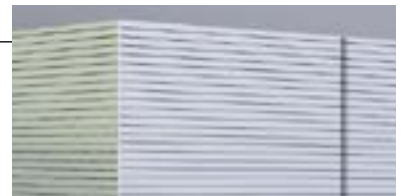


## SHAFTLINER PRODUCTS

### PABCORE® SHAFTLINER

PABCO MOLD CURB® PLUS combines the mold resistant chemistry of MOLD CURB® with the water resistant formulation of WATER CURB® to make dual mold and water resistant panel that provides the most enhanced mold and moisture protection available in a gypsum board product. MOLD CURB® PLUS is comprised of a naturally noncombustible, fire-resistant gypsum core. The core is wrapped in high quality 100% recycled facing and backing paper that is treated with mold and water resistant agents to inhibit the growth of mold and mildew. The facing paper will accept most decorative finishes.

Thickness	Type	UL Core
1"	Type X	PG-10

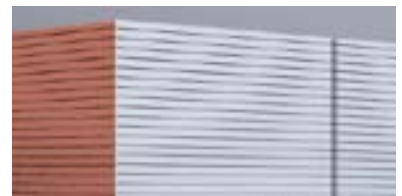


### PABCO GLASS® SHAFTLINER

PABCO GLASS® SHAFTLINER protects your building from fire, mold and water in a Shaftliner format. The combination of our proprietary glass fiber reinforced gypsum core encased in our distinctive orange, mold-resistant coated fiberglass mat facing provides added dimensional stability that resists warping, rippling, buckling, and sagging.

PABCO GLASS® SHAFTLINER was developed for lining elevator shafts and constructing light weight fire barriers for cavity shaft walls and Area Separation Walls in commercial and multi-family residential applications. PABCO GLASS SHAFTLINER can withstand extended exposure to normal weather conditions, up to 1 year, during construction.

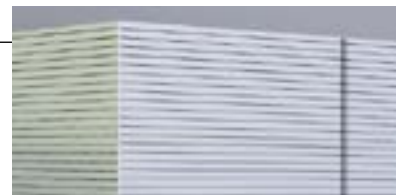
Thickness	Type	UL Core
1"	Type X	PG-10



### PABCORE MOLD CURB® Plus SHAFTLINER

PABCORE® MOLD CURB® Plus Shaftliner Type X panels combine the mold and water resistant formulation of MOLD CURB® PLUS with the proprietary Shaftliner fire resistant Type X core which has been reinforced with glass fibers and other additives to increase its fire resistance. PABCORE® MOLD CURB® Plus Shaftliner product is designed for lining elevator, ventilation and utility shafts, as well as constructing light weight cavity shaft walls and area separation walls for multi-family residential projects.

Thickness	Type	UL Core
1"	Type X	PG-10



The core is wrapped in high quality 100% recycled facing and backing paper that is treated with mold and water resistant agents to inhibit the growth of mold and mildew.



## SOUND REDUCING DRYWALL PRODUCTS

### QuietRock® 510

QuietRock 510 is a 1/2" thick panel drywall, requiring no special tools. QuietRock 510 is used on residential and commercial new and remodel projects improves STC performance at an entry level price. QuietRock 510 installs and finishes like standard drywall, requiring no special tools. QuietRock 510 is used on residential and commercial new and remodel projects

Thickness	Type	UL Core
1/2"	N/A	QR-510



### QuietRock® ES

QuietRock ES is the first sound reducing drywall that easily scores and snaps using breakthrough EZ-SNAP technology. QuietRock ES has no paper, and no metal on the inside of the panel making installation a snap. QuietRock ES delivers acoustical ratings of up to STC 55 on single stud construction. This patented product is easy to install and is ideal for residential and commercial construction.

Thickness	Type	UL Core
5/8"	Type X	QRES



### QuietRock® ES MR

QuietRock ES Mold Resistant is the first and only easy score and snap, mold resistant sound damping gypsum panel available. The mold resistant treatment to the paper and core can contribute to a healthier indoor environment. QuietRock ES MR has no paper, and no metal on the inside of the panel making installation a snap. QuietRock ES MR delivers acoustical ratings of up to STC 55 on single stud construction. It achieves the maximum score of 10 on the ASTM D3273 mold test, making it ideal for hospitals, schools, government projects and other mold sensitive applications

Thickness	Type	UL Core
5/8"	Type X	QRES



### QuietRock® 530

QuietRock 530 is a versatile, high gypsum panel that delivers superb noise reduction. This super-panel' is UL fire-rated, STC-rated, shear-rated, and impact-resistant.

Thickness	Type	UL Core
5/8"	Type X	QR530



### QuietRock® 530 RF

QuietRock 530 RF has all the benefits of QuietRock 530 with added Radio Frequency mitigation. QuietRock 530 RF allows builders to construct a fully grounded metal to metal connected room without the necessity of metal or foil underlayments. QuietRock 530 RF is used in SCIF rooms and healthcare facilities where radio frequency disturbances can effect sensitive data and equipment.

Thickness	Type	UL Core
5/8"	Type X	QR530



### QuietRock® 545

QuietRock 545 is engineered to provide professional studios and music rooms benefit from the low frequency performance matched with long term durability. Sound reduction across a broad frequency range. High-end home theaters, commercial theaters, recording studios, mechanical rooms, and other spaces that need to address low-frequency noise.

Thickness	Type	UL Core
1-3/8"	Regular	QR545





## QUIET® SOUND DAMPING SYSTEM ACCESSORY PRODUCTS

### QuietSeal® Pro

QuietSeal Pro is a high performance, non-hardening acoustical sealant designed to maintain acoustic performance in your walls, floors and ceilings. QuietSeal Pro remains soft long after application to prevent cracking and continues to reduce sound transmission over time. Use QuietSeal Pro and stop noise leaks in your wall, floor, or ceiling assembly. It's easy to use and fits into any standard caulking gun.

Using a standard caulking gun, apply QuietSeal Pro in accordance with good building practices around the perimeter of walls, ceilings, floors, any penetrations and seams not backed by a stud. Assure your assembly is airtight – completely fill gap with QuietSeal Pro.

Applied Thickness	Coverage	VOC
Approx. 1/4" bead	88 Linear feet using a 1/4" bead	Low VOC



### QuietPutty®

QuietPutty® is formulated to maintain the performance of acoustically rated wall assemblies by sealing penetrations including common electrical outlets boxes, phone outlet boxes, electrical switches, HVAC duct, and plumbing hookups.

QuietPutty is a preformed 1/8"x 7"x7" moldable putty pad, so no tools are required for application. Simply adhere the putty manually to back of outlet box or target area and mold around the appliance to seal any potential sound leaks.

Size	Coverage
1/8" thick 7" x 7"	1 pad per single junction box



## OTHER ACOUSTICAL PRODUCTS

### QuietGlue® Pro

QuietGlue® Pro is a high performance, low cost acoustical compound designed to be cost effective for commercial projects and small do-it-yourself projects. QuietGlue® Pro can be applied to drywall or wood (plywood, OBS, MDF, etc) to create a constrain-layer damped lamination in the field. Ideal applications include subfloor laminations, curved walls, coffered ceilings or in situations where sourcing QuietRock® may not be practical.

QuietGlue® Pro is not a construction adhesive. Laminated layers must be mechanically attached in accordance with local building requirements.

Applied Thickness	Coverage	VOC
1/8" bead random pattern	One 28 oz Tube per 4x8 sheet (32 ft <sup>2</sup> )	Low VOC



### QuietCoat®

QuietCoat® is a leading paintable or sprayable viscoelastic polymer for noise and vibration damping. This is an extensional damping compound for use on steel (iron, galvanized, stainless), aluminum, brass, copper, alloys, plastics, PVC, composites and other nonporous materials.

Fully ROHS Compliant  
Meets the highest industry flammability standards  
Anti-fungal and anti-rust capability

Common uses include: plumbing and sewer pipes, consumer electronics, appliances, factory process and material handling equipment, HVAC, air handling units, ducts, elevators, escalators, vehicles, rail cars,

Applied Thickness	Coverage	VOC
1 to 3 mm total	40-80 ft <sup>2</sup> per gallon	Low VOC



**Submittal Builder**  
**Sustainability Tool**  
**CSI Specifications**  
**Installation Instructions**  
**Fire & Safety Data**  
**Sound Design Data**  
**Dealer Locator**  
**Construction Guide**  
**Product Data Guides**  
**Live Technical Support**  
**Lab & Field Tested**  
**Acoustic Tests**  
**Fire Tests**  
**Case Studies**