

Cerastone® | Spraystone | Tuffstone Granite

Specialty Stone Finishes



DESCRIPTION:

- An attractive, multi-color wall finish made of colored aggregates
- Clear 100% Acrylic vapor-permeable binder
- Can be used in interior and exterior application
- Ideal for high traffic interior areas
- A highly durable, scratch-resistant finish
- Easily repaired

USES:

Exterior or interior finish coat over:

- EIFS.
- Properly prepared masonry, stucco, and concrete surfaces.
- Interior application over drywall, plaster, or properly prepared masonry or concrete.

COMPOSITION:

- Binder Base: Acrylic copolymer
- Aggregate: colored quartz aggregates, mica (Tuffstone Granite)
- Water-based: VOC compliant
- Meets SCAQMD Rule 1113 when using Parex USA Non-VOC Colorants.
- Color: Standard colors for Cerastone®, Spraystone, Tuffstone Granite.

COVERAGE:

Depending on the condition of the substrate and method of application, approximate coverages are:

Cerastone®

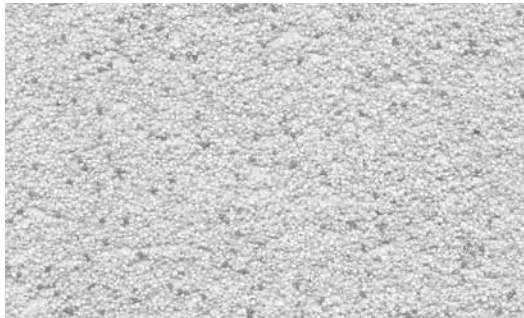
- Including both the troweled and the sprayed coats:
90-120 ft² (8.4-11.1 m²)/5 gal pail
- Troweled tight coat alone:
140-200 ft² (13-18.6 m²)/5 gal pail
- Fine spray alone:
250-300 ft² (23.2-27.9 m²)/5 gal pail

Spraystone

- 70-110 ft² (6.5-10.2 m²)/5 gal pail

Tuffstone Granite

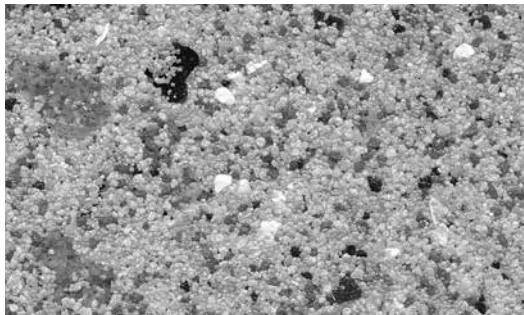
- 75-100 ft² (7.0-9.3 m²)/5 gal pail



CERASTONE®



SPRAYSTONE



TUFFSTONE GRANITE

CONTAINER:

Cerastone and Spraystone

– 65 lbs (29.5 kg) net weight in 5 gal pail

Tuffstone Granite

– 60 lbs (27.2 kg) net weight in 5 gal pail

- Storage: Protect from direct sunlight and freezing at all times
- Do not stack pails more than 3 pails high
- Shelf Life: Reference Parex USA Expiration Date of Products Technical Bulletin.

DRYING TIME:

24 hours under normal conditions. High humidity and low temperatures extend drying time.

CLEAN-UP:

Water soluble prior to drying. Clean tools and containers with water prior to drying.

SURFACE PREPARATION:

- Remove surface contaminants such as dust or dirt without damaging the substrate.
- For previously painted surfaces, all loose and chalking paint must be removed and glossy surfaces dulled.
- New concrete and masonry must be clean and cured a minimum of 28 days.
- Check concrete surfaces for alkalinity and treat. Any form-release agents or bond breakers must be removed.
- Uneven concrete or masonry can be leveled with Stucco Level Coat or other suitable, compatible product.
- Portland cement plaster should be cured and dry 7 days before installation or in accordance with Parex USA Stucco Application Guide
- For interior drywall, prepare as for painting a Level 3 surface.
- To ensure the consistency of the Variance color, apply a coat of tinted Sanded Primer to all surfaces.
- For application of Sanded Primer, refer to the Product Data Sheet.

Primer

- Sanded Primer is required under these clear acrylic binder finishes, which dry clear, therefore color irregularities may be visible under the finish. To achieve the best results, a dark colored primer should be used; the color of the primer will be dictated by the color of the granules in the Cerastone or Spraystone and the Parex USA color department can provide recommended primer colors for each finish.

- Dark colored primers hide substrate irregularities better than light colors. Small amounts of water (up to 12 oz.) may be added to the primer. However, do not add any water to the Cerastone or Spraystone Finish.
- The color of the primer will greatly influence the final appearance of the Cerastone.
- For additional options, contact Parex USA Technical Support.

MIXING:

- Use clean equipment for mixing and preparation.
- Do not mix for more than 30 seconds.
- Stir to obtain a homogeneous consistency using a heavy duty 1/2 in. (13mm) drill with a rust-free paddle at 400-500 rpm. Avoid air entrainment.
- Special care should be taken when mixing Tuffstone Granite. High speed mixing or over mixing can pulverize the mica flakes and alter the appearance of the product.

APPLICATION:

- Parex USA recommends that the project owner or designer approve a job site mock-up of the application of this product. The mock-up should demonstrate the product's appearance under the conditions given by the project specification(s).
- Periodically, as the work progresses, evaluate it from a distance to ensure the desired effect is being produced across the entire surface.
- If installing in a wet environment, the Variance High Humidity Wet Areas specification must be followed.
- Read the entire label before using this product.
- For Cerastone®: use a clean stainless steel trowel and apply a uniform coat slightly thicker than the aggregate size. Level the material using a stainless steel trowel slicking the material tight. The slicking motion should be done in one direction only. Do not flat float.
- Apply fine spray of Cerastone® evenly over the troweled Cerastone® layer for a more uniform texture and reduced appearance of gloss.
- For Spraystone: spray the first coat of Spraystone over the primed surface. Spraystone may be sprayed by hopper gun or others suitable plaster spray equipment (Cerastone® can be applied in this manner as well, especially for large surfaces). Use air pressure approximately 15-25 psi. If aggregate bounces back off the wall, the air pressure is too high. A second coat of sprayed Spraystone may be needed to achieve the desired look.
- For Tuffstone Granite: apply to an even layer, using a clean, stainless steel trowel. Work the trowel in a single direction to make a smooth surface. Lightly float the surface using a clean

plastic float or stainless steel trowel several times. This will bring the large mica to the surface and enhance the granite appearance.

For all Variance Specialty Finishes

- Always maintain a wet edge and work to the corners or joints.
- For best color consistency, use finish with the same batch number within a wall section.
- Keep container closed when not in use.

LIMITATIONS:

- Ambient and surface temperature must be 40°F (10°C) or higher during application and drying time. Supplemental heat and protection from precipitation must be provided as needed.
- Use only on surfaces that are sound, clean, dry, unpainted and free from any residue which may affect the ability of the finish to bond to the surface.
- Application in direct sunlight in hot weather may adversely affect aesthetics.
- Due to the nature of the raw materials used in this product, all material should be ordered at the same time to avoid color matching problems. Parex USA cannot assure color combinations will match between batches made at different times.
- Do not use as waterproofing. Do not use below grade.
- Do not use directly over foam plastic, gypsum board, or other insulation type boards.
- Do not apply in a thickness greater than 1/8 in. (3 mm).
- Must not be used on exposed exterior horizontal surfaces. Minimum slope is 27° or 6:12 inches.
- Do not use on surfaces subject to hydrostatic pressure or continuous or intermittent water immersion.
- Avoid application over damp surface or in excessively humid conditions. Finish may become milky in color after it gets wet. This should dissipate with subsequent wetting and drying cycles.

WARNING:

- Read complete warning information printed on product container prior to use. For medical emergency information, call 1-800-424-9300.
- For more information on handling this product refer to its Safety Data Sheet (SDS). The most current SDS and Product Data Sheet (PDS) can be found on our website.
- This Product Data Sheet has been prepared in good faith on the basis of information available at the time of publication. It is intended to provide users with information about the guidelines for the proper use and application of the covered product(s) under normal environmental and working conditions. Because each project is different, Parex USA, Inc. cannot be responsible for the consequences of variations in such conditions, or for unforeseen conditions.

Parex USA, Inc.
4125 E. La Palma Ave., Suite 250
Anaheim, CA 92807
(866) 516-0061 Tech Support: (800) 226-2424



EIMA

SMA



PAREXUSA SUSTAINABILITY