



Metallic Finish

Smooth
Coarse
Fine

Test	Method	ICC/ASTM Criteria	Results
Abrasion Resistance	ASTM D968	No cracking or loss of film integrity at 528 quarts (500 L) of sand	Pass @ 1000 Liters
Accelerated Weathering	ASTM G153 (Formerly ASTM G 23)	No deleterious effects at 2000 hours when viewed under 5x magnification	Pass
Flexibility (Mandrel Bend)	ASTM D522, Method B	No Requirement	1/2" diameter @ 73°F
Freeze/Thaw Resistance	ASTM E2485	No deleterious effects at 10 cycles when viewed under 5x magnification	Pass @ 60 cycles
Mildew Resistance	ASTM D3273	No growth supported during 28 day exposure period	Pass @ 35 days
Mildew Resistance	MIL 810 B 508	No Requirement	No growth 28 days
Moisture Resistance	ASTM D2247	No deleterious effects at 14 day exposure	Pass @ 28 days
Salt Fog Resistance	ASTM B117	No deleterious effects at 300 hours	Pass @ 900 hrs
Scrub Resistance	ASTM D2486	No Requirement	Pass @ 20,000 Cycles
Surface Burning Characteristics	ASTM E84	Individual components shall each have a flame spread <25, and smoke developed < 450	Flame Spread: 0 to 15 Smoke Developed: 0 to 15
Water Vapor Transmission	ASTM E96 Procedure B	Vapor Permeable	Permeable
VOC	EPA Reference Test Method 24	US EPA, South Coast AQMD and Greenseal Standard	<10 g/L

DESCRIPTION:

- 100% acrylic-based textured metallic finish
- Integrally colored with high-quality metallic pigments
- Exceeds ASTM and ICC Acceptance Criteria

USES:

- Exterior or interior finish coat over:
- EIFS (CI)
 - Properly prepared stucco, masonry and concrete surfaces
 - Interior application over drywall, plaster, or properly prepared masonry or concrete

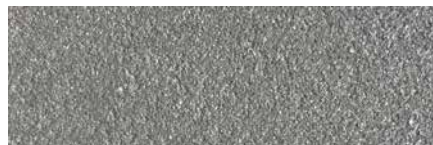
COMPOSITION:

- Binder base: 100% acrylic polymer with surface-hardening property.
- Water-based: VOC-compliant.
- 12 metallic colors:
 - Amethyst
 - Aquarius Blue
 - Brass
 - Bronze
 - Gold
 - Midnight
 - Pearl Green
 - Russet Brown
 - Silver
 - Terracotta
 - Vibrant Ruby
 - Yellow Gold

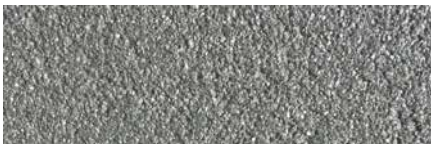
Textures



SMOOTH



FINE



COARSE

COVERAGE

- Depending on the condition of the substrate and method of application, approximate coverages per 5-gal pail (55lbs) are:

Smooth

250–290 ft² (23–27 m²) for one coat

180–210 ft² (16–19 m²) for two coats

Fine

240–270 ft² (22–25 m²)

Coarse

150–190 ft² (14–18 m²)

CONTAINER

55 lb (29.9 kg) net weight in a 5-gal plastic pails.

- Storage: Protect from direct sunlight and freezing at all times.
- Do not stack pails more than 3 pails high.
- Shelf life: Reference Parex USA Expiration Date of Products Technical Bulletin.

DRYING TIME

- 24-48 hours under normal conditions. High humidity and low temperatures extend drying time.

CLEAN-UP

- Water-soluble prior to drying. Clean tools and containers with water prior to drying.

SURFACE PREPARATION

- Remove surface contaminants such as dust or dirt without damaging the substrate.
- For previously painted surfaces, all loose and chalking paint must be removed, and glossy surfaces dulled.
- New concrete and masonry must be clean and cured a minimum of 28 days.
- Check concrete surfaces for alkalinity and treat. Any form-release agents or bond breakers must be removed.
- Portland cement plaster must be clean and cured a minimum of 7 days or in accordance with LaHabra Fastwall Specifications.
- Uneven concrete or masonry can be leveled with any Parex USA EIFS (CI) Basecoat & Adhesive, Stucco Level Coat or other suitable compatible product

- For interior drywall, prepare as for painting.
- Parex USA recommends the use of primers to enhance the appearance and uniformity of the finish, improved coverage, and decrease the chance of efflorescence. This is especially true when using dark colors or finishes with a large aggregate. If specified, prime with Parex USA Primer or Variance VariPrime Sanded, refer to Product Data Sheet.
- For additional options, contact Parex USA Technical Support.

MIXING

- Use clean equipment for mixing and preparation.
- Stir to obtain a homogeneous consistency using a heavy-duty 1/2 in. (13mm) drill with a rust free paddle at 400–500 rpm or less. Avoid air entrainment.
- Addition of water may be needed to achieve desired texture. A maximum of 16 oz. (0.5L) can be added. Add the same amount to all pails as water may influence texture and color

APPLICATION

- Read the entire label before using this product.
- Always maintain a wet edge and work to corners or joints. For best color consistency, use finish with the same batch number within a wall section. For more information, see Technical Bulletin: "Boxing Acrylic Finishes".
- Keep container closed when not in use.
- Use a clean stainless steel trowel and apply a uniform coat the thickness of the largest aggregate size of the finish.
- Texturing: Use a clean stainless steel trowel and apply a uniform coat the thickness of the largest aggregate size of the finish. Using a plastic trowel may cause swirl or drag marks.
- Frequently clean and dry the trowel while texturing. Use consistent pressure and motion to achieve the desired texture.
- It is recommended to apply one coat for all the textured metallic finishes.

- Texturing Smooth Finish:
 - Optional: Level stucco brown coats with any Parex USA EIFS (CI) Base Coat and Adhesive or Stucco Level Coat and let dry prior to finish application.
 - Two coats of finish are optional.
 - Smooth Finish cannot generally be floated. Texture will be "as trowelled."
 - For smoothest application, apply in two tight coats. Allow first coat to dry enough that it will not be disturbed during application of the second coat. When second coat is partially dry, trowel to desired smoothness.

LIMITATIONS

- Ambient and surface temperature must be 40°F (4°C) or higher during application and drying time. Provide supplemental heat and protection from precipitation as needed.
- Use only on surfaces that are sound, clean, dry and free from any residue that might affect the ability of the finish to bond to the surface.
- Application in direct sunlight in hot weather may adversely affect aesthetics.
- Parex USA is not responsible for color correctness after finish has been applied.

WARNING

- Read complete Warning information printed on product container prior to use. For medical emergency information, call 1-800-424-9300.
- For more information on handling this product refer to its Safety Data Sheet (SDS). The most current SDS and Product Data Sheet (PDS) can be found on our website.
- This Product Data Sheet has been prepared in good faith on the basis of information available at the time of publication. It is intended to provide users with information about the guidelines for the proper use and application of the covered product(s) under normal environmental and working conditions. Because each project is different, Parex USA, Inc. cannot be responsible for the consequences of variations in such conditions, or for unforeseen conditions.

PAREXUSA

Parex USA, Inc., a California Corporation
Anaheim, CA 92807 USA
www.variancefinishes.com
866-516-0061
Tech Support: 800-226-2424

FOR PROFESSIONAL USE ONLY