

COLOR GUIDE

Galvanized

White

Brown

Bronze

Black

Tan

Actual colors may vary

ROLL FLASHING

Phillips EDGEmaster® Roll Flashing is used for custom flashing and do-it-yourself projects. This product adds a customized look to any dormer or flashing piece. Available in a variety of colors (see color guide). Up to 24" width available. Standard widths are 24" (RF2400), 20" (RF2000), 18" (RF1800), 16" (RF1600), 14" (RF1400), 12" (RF1200), 10" (RF1000), 8" (RF800), 6" (RF600) and 4" (RF400). 10', 25' and 50' length rolls available.



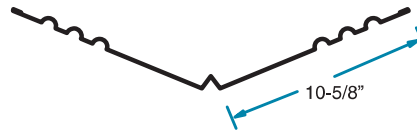
PART NUMBER: SEE TEXT



PART NUMBER: SEE TEXT

W-VALLEY

Phillips EDGEmaster® W-Valley is used in the roof valley area to channel water down into the gutters. This product features a small ridge in the middle to prevent run-off rain from running down the side of the roof and running under the shingles on the opposing side. This product is available in 24" width (WV24) as shown; standard width of 18" (WV18) and 20" (WV20) also available. Available in a variety of colors (see color guide). This product features hemmed edges for easy installation. Standard packaging is 100 pieces per pallet.

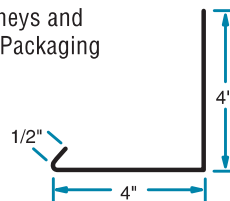


Drawing not to scale

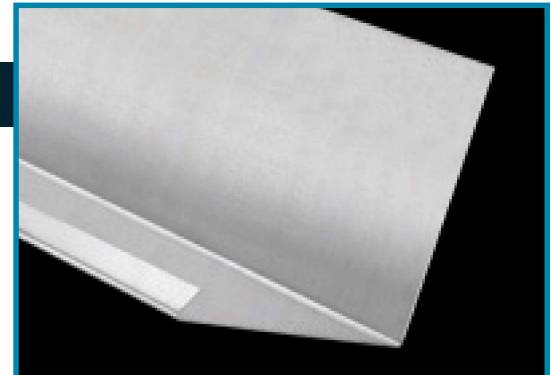
24" shown; other sizes available

TILE PAN (SIDEWALL FLASHING)

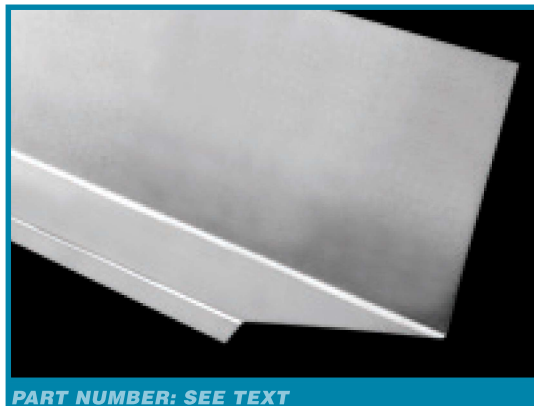
Phillips EDGEmaster® Tile Pan works great as flashing around chimneys and other applications. Available in a variety of colors (see color guide). Packaging is 10 pieces per bundle.



Drawing not to scale



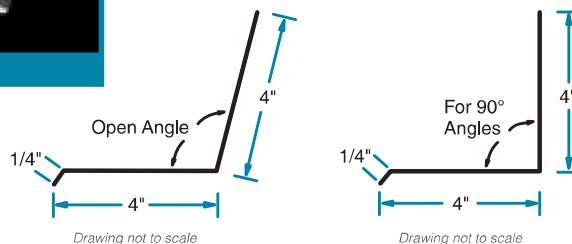
PART NUMBER: TP4X4



PART NUMBER: SEE TEXT

WALL (DORMER) FLASHING

Phillips EDGEmaster® Wall (Dormer) Flashing is designed to prevent the entry of water into the wall. Wall flashing is typically found at interruptions in the wall, such as windows and points of structural support. This product works great to prevent top edge of window or door openings from water infiltration. Wall (Dormer) Flashing is available in open angle (WF120) and regular for 90° angles (WF90). Available in a variety of sizes and colors (see color guide). Packaging is 10 pieces per bundle.



Drawing not to scale

Drawing not to scale

