

# CHANNELS



## "Engineered to Perform"

### Phillips Metal Channels:

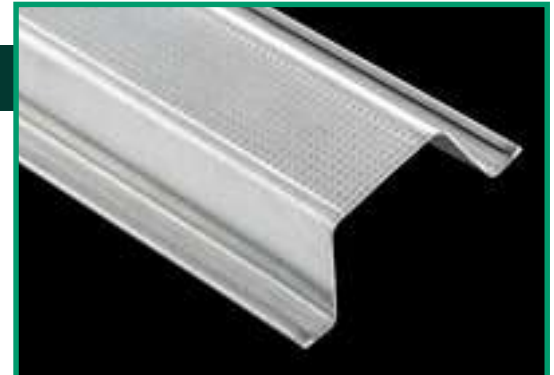
- » Wide nailing flanges for positive clip attachment
- » Hemmed edges and knurling ensure positive screw location and eliminate wandering

## 7/8" DWC HAT FURRING CHANNEL

Phillips 7/8" DWC Hat Furring Channel is a ceiling and wall furring channel designed with wide nailing flanges for positive clip attachment. Phillips offers this product in 25 and 20 gauge steel. In 25 gauge steel, this product features hemmed edges and knurling to ensure positive screw placement and eliminate wandering. The standard length is 12'; however, other lengths may be available.



*Drawing not to scale*



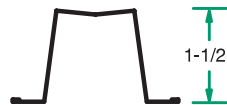
**PART NUMBER: 087F125**



**PART NUMBER: 150F125**

## 1-1/2" DWC HAT FURRING CHANNEL

Phillips 1-1/2" DWC Hat Furring Channel features a deeper furring channel for an increasing number of applications. Phillips offers this product in 25 and 20 gauge steel. In 25 gauge steel, this product features hemmed edges and knurling to ensure positive screw placement and eliminate wandering. The standard length is 12'; however, other lengths may be available.



*Drawing not to scale*

### SIZES AND PACKAGING

#### DWC Hat Furring Channel

Product Size	Length	Pieces Per Bundle	Bundles Per Pallet	Feet Per Bundle
<b>20 Gauge</b>				
7/8"	12'	10	45	120
1-1/2"	12'	10	45	120
<b>25 Gauge</b>				
7/8"	12'	20	45	240
1-1/2"	12'	20	45	240

UPC labeling available upon request