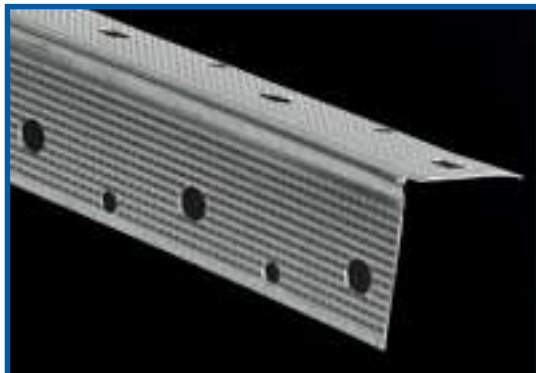


# METAL CORNER BEADS

## PHILLIPS UNMATCHED SELECTION OF CORNER BEAD



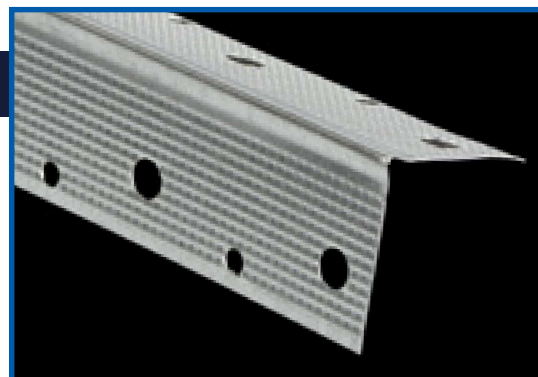
PART NUMBER: CBRHDG

### Everlast® CORNER BEAD

Phillips performance proven Everlast® corner bead features a hot-dipped galvanized steel surface coating providing excellent rust protection. Phillips corner beads are easily installed using standard industry practice with drywall nails, staples, screws or clinching tool. Phillips corner beads also feature deeply knurled mud anchors to further ensure perfect mud adhesion.

### klinchSTIK®

Phillips is the exclusive producer of klinchSTIK® metal bead. This corner bead features a grey galvanized surface coating and deeply knurled mud anchors for perfect mud adhesion. Phillips corner beads are easily installed using standard industry practice with drywall nails, staples, screws or clinching tool. Phillips klinchSTIK® is the ideal product for quick and easy installation with a clinching tool.



PART NUMBER: CBKEGB



PART NUMBER: CBRSF

### ShadowFree® CORNER BEAD

Phillips ShadowFree® corner bead is the perfect color and texture for a superior finish. This product features a hot-dipped galvanized steel surface coating with a primer top coating for excellent corrosion prevention and to ensure quality mud and paint adhesion. Phillips exclusive ShadowFree® surface coating helps prevent shadowing and cuts down on finishing time.

#### SIZES AND PACKAGING

##### Corner Bead

Length	Pieces Per Carton	Cartons Per Pallet	Feet Per Carton
7'	72	48	504
8'	63	48	504
9'	56	48	504
10'	50	48	500
12'	42	48	504

UPC labeling available upon request

