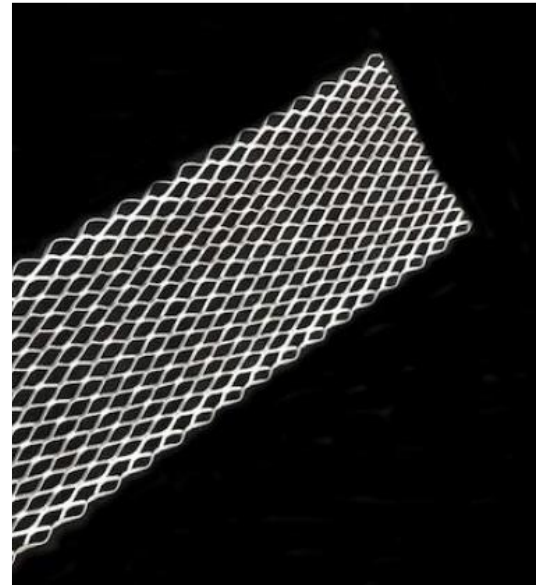
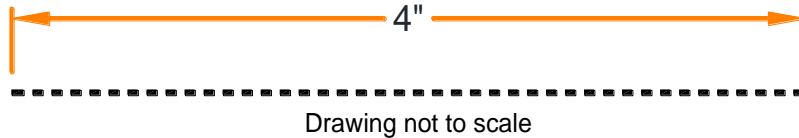


## 4" Strip Lath

4" Strip Lath is designed for strengthening corners for window openings and doorways. This Phillips product is reinforcement for finishing corners prone to cracking and is applied diagonally across the corners where cracking is prevalent. Phillips 4" Strip Lath works great for reinforcing other areas on any stucco job noted for cracking.



### Product Data and Ordering Information

Material: Hot-dipped galvanized  
Part Number: STP4HDG8

Sheet Size	Pieces per Bundle	Bundles Per Carton	Feet per Carton	Bundles per Pallet
4" x 97"	25	3	600	20

All Phillips products are made in the U.S.A.

### ASTM and Code Standards

Phillips Diamond strip Lath products meets or exceeds:

- ASTM A653 Standard Specification for Steel Sheet, Zinc-Coated (Galvanized) or Zinc-Iron Alloy-Coated (Galvannealed) by the Hot-Dip Process.
- ASTM C1063 Installation of Lath Accessories.

SDS and other technical information available at [www.phillipsmfg.com](http://www.phillipsmfg.com).

### Leed Credits for Recycled Content

MR2 – The steel and vinyl used in Phillips Manufacturing products is 100% recyclable.

MR4 – Phillips Manufacturing steel and vinyl products have a minimum of:

Total recycled content:	30%
Post-consumer recycled content:	25%
Pre-consumer recycled content:	5%

### Storage

Avoid bending or other damage and store in a dry place protected from moisture.

### Leed v4 for building and Design Construction

- MR Prerequisite: Construction and Demolition Waste Management Planning.
- MR Credit: Construction and Demolition Waste Management.
- MR Credit: Building Product Disclosure and Optimization Sourcing of Raw Materials, Option2.
- MR Credit: Building Product Disclosure and Optimization Environmental Product Declaration, Options 1 & 2.
- MR Credit: Building Product Disclosure and Optimization Material Ingredients, Option 1.
- MR Credit: Building Life-Cycle Impact Reduction, Option 4