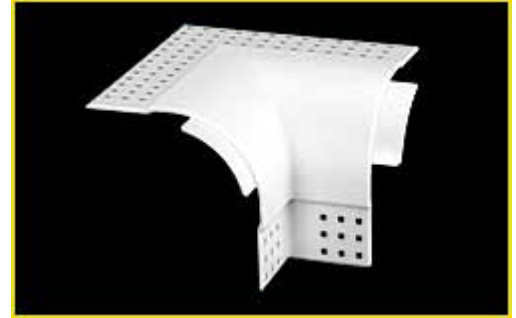




## **gripSTIK® 1-1/2" 2-Way Corner Cap**

gripSTIK® 1-1/2" 2-Way Corner Cap is designed to easily finish two intersecting 90° outside corners. This product works great to cap corners of windows, closets, doorways, skylights and other areas. Corner caps eliminate the need for mitering and corner filling, saving time and reducing waste. Alignment tabs make it easy to match with Phillips metal, vinyl or paper faced metal bullnose corner beads. Perforated to enhance mud adhesion. Won't rust and impact resistant.



### **Product Data and Ordering Information**

Material: Molded copolymer; contains no asbestos  
Part Numbers: CAP287  
Packaging: 50 pieces per carton

All Phillips products are made in the U.S.A.

### **ASTM and Code Standards**

Phillips gripSTIK® 1-1/2" 2-Way Corner Cap meets or exceeds the following ASTM Standards:

- ASTM C 1047 Standard Specification for Accessories for Gypsum Wallboard
- ASTM D 1784 Standard Specification for Rigid Poly (Vinyl Chloride) (PVC) Compounds and Chlorinated Poly (Vinyl Chloride) (CPVC) Compounds
- ASTM D 3678 Standard Specification for Rigid Poly (Vinyl Chloride) (PVC) Interior-Profile Extrusions

SDS and other technical information available at [www.phillipsmfg.com](http://www.phillipsmfg.com)

### **Patents**

U.S. Patents 6,295,776, 6,691,476, 6,438,914, RE34,547, D487,520, D487,156, D501,050 and D486,920

### **Storage**

Avoid damage and store in a covered area away from direct sunlight.