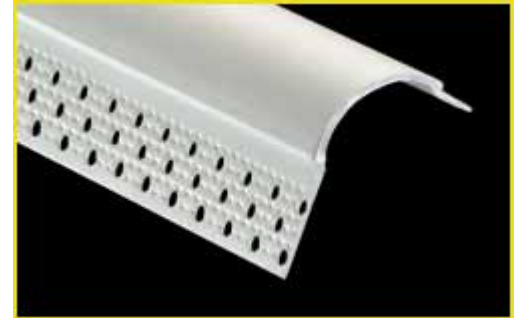




## gripSTIK® 3/4" Bullnose Kerf

gripSTIK® 3/4" Bullnose Kerf has a unique shortened back flange allowing for easy insertion into grooved door jambs and window trims. This easy-to-install bullnose kerf is always a great fit and provides the smooth, round appearance associated with bullnose trims. This product can be nailed, stapled or applied with spray adhesive. The specially knurled and perforated flanges allow excellent joint compound adhesion. No mud additives or priming are needed prior to painting. Phillips bead is dent resistant, won't rust and easy to cut with shears, knife or fine-tooth hacksaw.

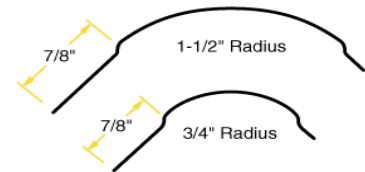


### Product Data and Ordering Information

Material: Extruded rigid vinyl; contains no asbestos  
 Dimensions: 7/8" leg x 7/8" leg, 3/4" radius  
 Part Number: BK3VYL

Length	Pieces Per Carton	Cartons Per Pallet	Feet Per Carton
8"	35	50	280
9'	35	50	315
10'	35	50	350

All Phillips products are made in the U.S.A.



Also available in 1-1/2" radius

*Drawing not to scale*

### ASTM and Code Standards

Phillips gripSTIK® 3/4" Bullnose Kerf meets or exceeds:

- ASTM C 1047 Standard Specification for Accessories for Gypsum Wallboard
- ASTM D 1784 Standard Specification for Rigid Poly (Vinyl Chloride) (PVC) Compounds and Chlorinated Poly (Vinyl Chloride) (CPVC) Compounds
- ASTM D 3678 Standard Specification for Rigid Poly (Vinyl Chloride) (PVC) Interior-Profile Extrusions

SDS and other technical information available at [www.phillipsmfg.com](http://www.phillipsmfg.com)

### Patents

U.S. Patents 6,295,776 and 6,691,476

### Leed Credits for Recycled Content

MR2 – The steel and vinyl used in Phillips Manufacturing products is 100% recyclable.

MR4 – Phillips Manufacturing steel and vinyl products have a minimum of:

Total recycled content: 30%  
 Post-consumer recycled content: 25%  
 Pre-consumer recycled content: 5%

### Storage

Avoid damage and store in a covered area away from direct sunlight.

