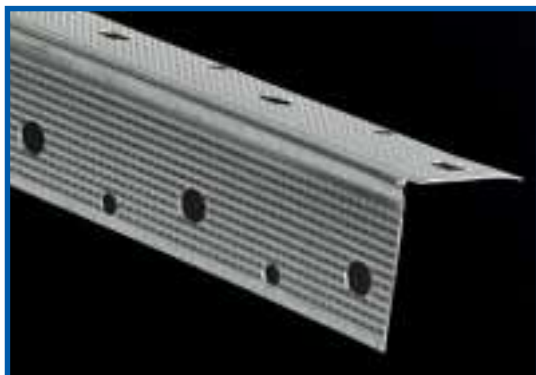


# METAL CORNER BEADS

## PHILLIPS UNMATCHED SELECTION OF CORNER BEAD



PART NUMBER: CBRHDG

### Everlast® CORNER BEAD

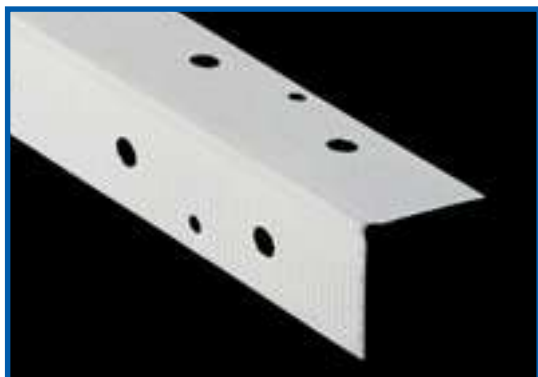
Phillips performance proven Everlast® corner bead features a hot-dipped galvanized steel surface coating providing excellent rust protection. Phillips corner beads are easily installed using standard industry practice with drywall nails, staples, screws or clinching tool. Phillips corner beads also feature deeply knurled mud anchors to further ensure perfect mud adhesion.

### klinchSTIK®

Phillips is the exclusive producer of klinchSTIK® metal bead. This corner bead features a grey galvanized surface coating and deeply knurled mud anchors for perfect mud adhesion. Phillips corner beads are easily installed using standard industry practice with drywall nails, staples, screws or clinching tool. Phillips klinchSTIK® is the ideal product for quick and easy installation with a clinching tool.



PART NUMBER: CBKEGB



PART NUMBER: CBRSF

### ShadowFree® CORNER BEAD

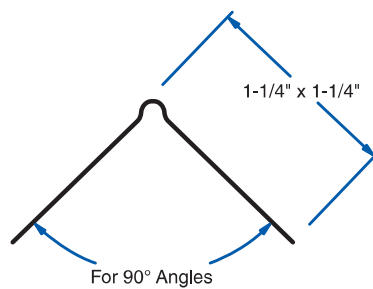
Phillips ShadowFree® corner bead is the perfect color and texture for a superior finish. This product features a hot-dipped galvanized steel surface coating with a primer top coating for excellent corrosion prevention and to ensure quality mud and paint adhesion. Phillips exclusive ShadowFree® surface coating helps prevent shadowing and cuts down on finishing time.

#### SIZES AND PACKAGING

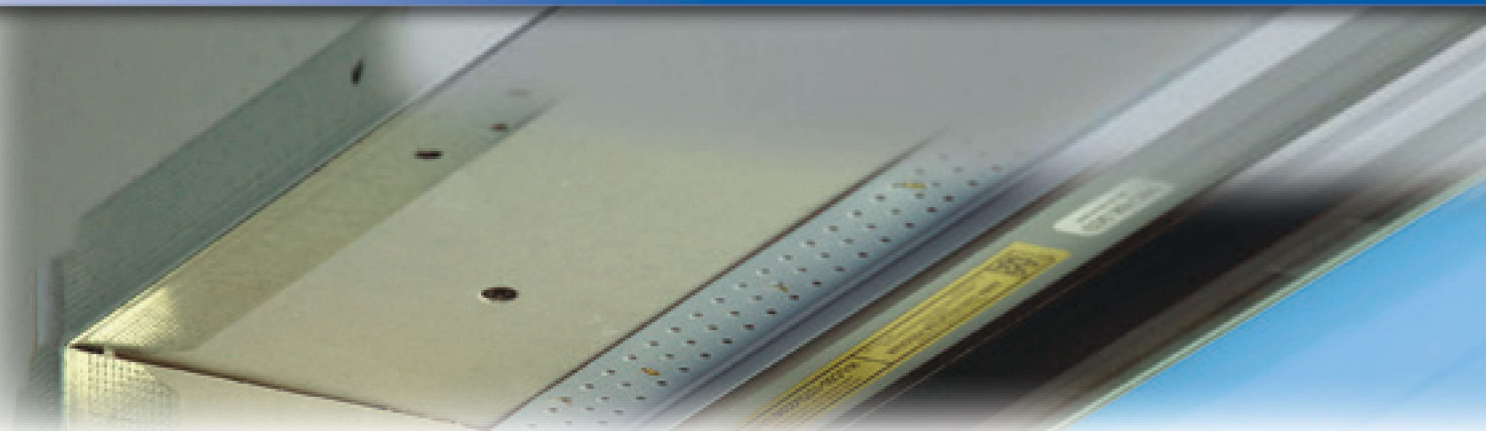
##### Corner Bead

Length	Pieces Per Carton	Cartons Per Pallet	Feet Per Carton
7'	72	48	504
8'	63	48	504
9'	56	48	504
10'	50	48	500
12'	42	48	504

UPC labeling available upon request



Drawing not to scale



PART NUMBER: CBSEGB

## klinchSTIK® SPLAY CORNER BEAD

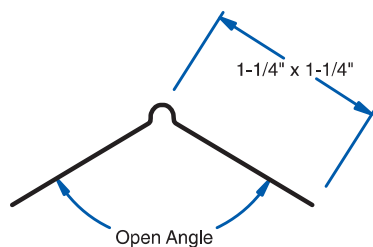
Phillips klinchSTIK® splay corner bead creates a time-saving, smooth, consistent finish for open angles exceeding 120°. klinchSTIK® splay features a grey galvanized surface coating which provides excellent rust protection. Install using standard industry practice with nails, staples, screws or clinching tool and finish with joint compound for a high-quality professional finish. Like all Phillips corner beads, this bead features deeply knurled mud anchors to further ensure perfect mud adhesion.

## ShadowFree® SPLAY

Phillips ShadowFree® splay corner bead is the perfect color and texture for a superior finish on open angles exceeding 120°. This product is primed over a hot-dipped galvanized steel surface coating for excellent corrosion prevention and to ensure quality mud and paint adhesion. Phillips exclusive ShadowFree® surface coating helps prevent shadowing and cuts down on finishing time.



PART NUMBER: CBSSF



Drawing not to scale

### SIZES AND PACKAGING

#### Splay Corner Bead

Length	Pieces Per Carton	Cartons Per Pallet	Feet Per Carton
8'	63	48	504
9'	56	48	504
10'	50	48	500

UPC labeling available upon request

Phillips Metal Beads & Trims work great with our extensive line of Corner & Transition Caps. See pages 17-18 for more details.



# BULLNOSE METAL CORNER BEADS



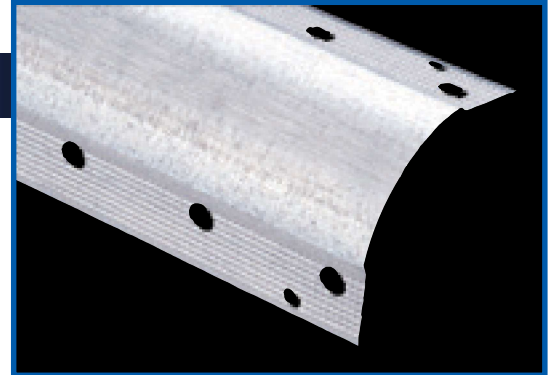
PART NUMBER: BN3EGB

## 3/4" klinchSTIK® BULLNOSE

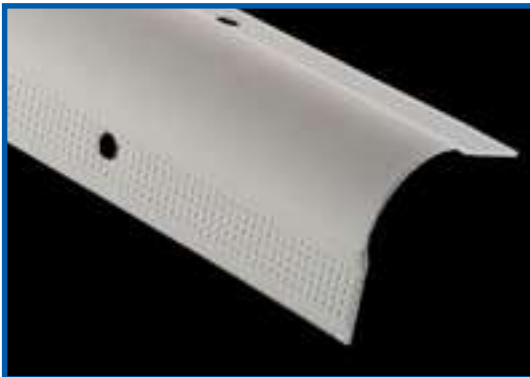
Phillips performance proven klinchSTIK® 3/4" bullnose corner bead is used for a smooth, rounded finish on exposed edges of wallboard. Bullnose corner beads are a great way to finish off a room elegantly. This product provides superior corrosion protection and mud adhesion. This corner bead features a grey galvanized surface coating which provides the finest rust protection. Flanges feature deeply knurled mud anchors to further ensure perfect mud adhesion. Phillips corner beads are easily installed using standard industry practice with drywall nails, staples, screws or clinching tool.

## 1-1/2" klinchSTIK® BULLNOSE

Phillips performance proven klinchSTIK® 1-1/2" bullnose corner bead provides a more pronounced round corner creating a modern look at exposed edges of wallboard. This product also provides superior corrosion protection and mud adhesion. Phillips klinchSTIK® products feature a grey galvanized surface coating which provides the finest rust protection. Easily install using standard industry practice with drywall nails, staples, screws or clinching tool. The flanges of Phillips bullnose corner beads feature deeply knurled mud anchors to further ensure perfect mud adhesion.



PART NUMBER: BN5EGB



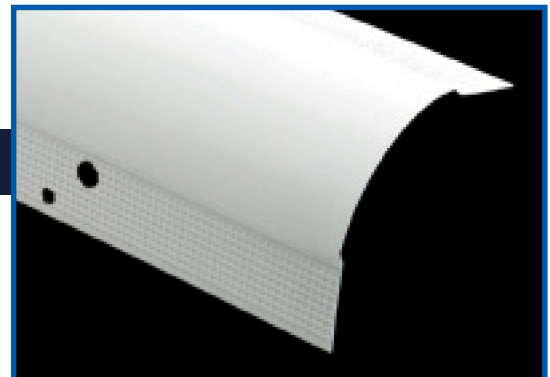
PART NUMBER: BN3SF

## 3/4" ShadowFree® BULLNOSE

Phillips ShadowFree® bullnose is the perfect color and texture for a superior finish. This product features a hot-dipped galvanized steel surface coating with a primer top coating for excellent corrosion prevention and to ensure quality mud and paint adhesion. Phillips exclusive ShadowFree® surface coating helps prevent shadowing and cuts down on finishing time.

## 1-1/2" ShadowFree® BULLNOSE

Expand your market with the perfect color and texture for a superior finish. This product is primed over a hot-dipped galvanized steel surface coating for excellent corrosion prevention and to ensure quality mud and paint adhesion. Phillips exclusive ShadowFree® surface coating prevents shadowing and cuts down on finishing time. Phillips 1-1/2" bullnose corner beads provide a more pronounced round corner creating a modern look.



PART NUMBER: BN5SF

### SIZES AND PACKAGING

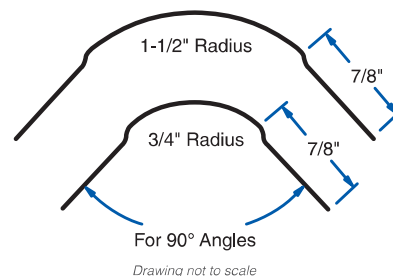
#### 3/4" Bullnose

Length	Pieces Per Carton	Cartons Per Pallet	Feet Per Carton
7'	58	49	406
8'	50	64	400
9'	45	63	405
10'	40	60	400
12'	33	40	396

#### 1-1/2" Bullnose

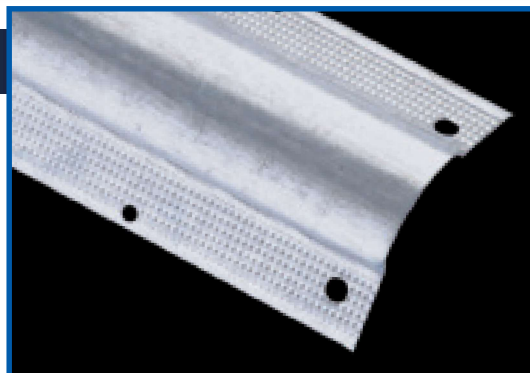
10'	20	40	200
-----	----	----	-----

UPC labeling available upon request

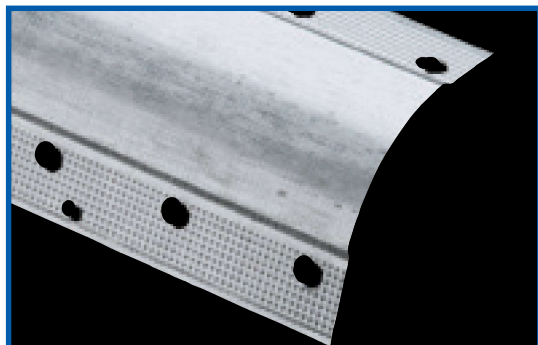


## 3/4" klinchSTIK® BULLNOSE SPLAY

Phillips performance proven klinchSTIK® 3/4" bullnose splay corner bead is used for a smooth, rounded finish on angles exceeding 120°. Bullnose splay corner beads are a great way to finish off a room elegantly. Phillips klinchSTIK® products feature a grey galvanized surface coating which provides the finest rust protection. Easily install using standard industry practice with drywall nails, staples, screws or clinching tool. The flanges of Phillips bullnose corner beads feature deeply knurled mud anchors to further ensure perfect mud adhesion.



PART NUMBER: BS3EGB



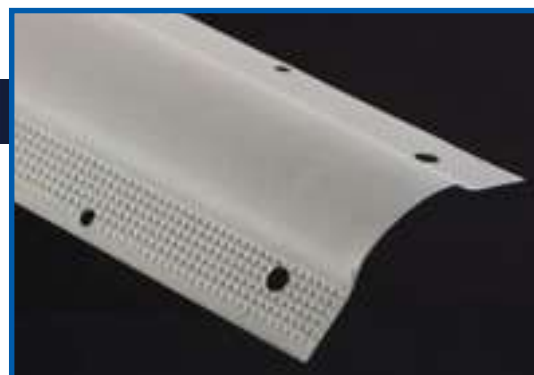
PART NUMBER: BS5EGB

## 1-1/2" klinchSTIK® BULLNOSE SPLAY

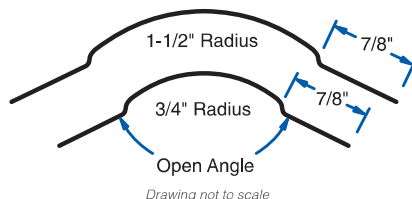
Phillips performance proven klinchSTIK® 1-1/2" bullnose splay corner bead provides a more pronounced round corner creating a modern look on angles exceeding 120° with its larger bullnose radius. This product also provides superior corrosion protection and mud adhesion. This corner bead features a grey galvanized surface coating which provides the finest rust protection. Easily install using standard industry practice with drywall nails, staples, screws or clinching tool. The flanges of Phillips bullnose corner beads feature deeply knurled mud anchors to further ensure perfect mud adhesion.

## 3/4" ShadowFree® BULLNOSE SPLAY

Phillips 3/4" ShadowFree® bullnose splay corner bead is the perfect color and texture for a superior finish on angles exceeding 120°. This product is primed over a hot-dipped galvanized steel surface coating for excellent corrosion prevention and to ensure quality mud and paint adhesion. Phillips exclusive ShadowFree® surface coating prevents shadowing and cuts down on finishing time.



PART NUMBER: BS3SF



### SIZES AND PACKAGING

#### 3/4" Bullnose Splay

Length	Pieces Per Carton	Cartons Per Pallet	Feet Per Carton
7'	58	40	406
8'	50	40	400
9'	45	40	405
10'	40	40	400
12'	33	40	396

#### 1-1/2" Bullnose Splay

10'	20	40	200
-----	----	----	-----

UPC labeling available upon request

Phillips Metal Beads & Trims work great with our extensive line of Corner & Transition Caps. See pages 17-18 for more details.

