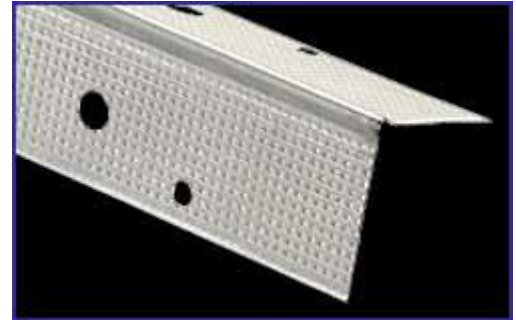




KlinchSTIK® Corner Bead

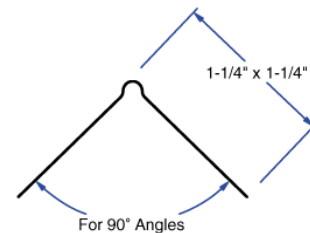
KlinchSTIK® metal drywall corner bead provides lasting corner protection to exposed drywall edges. Flanges are deeply knurled and perforated for ease of joint compound adhesion and nail attachment. Grey galvanized steel surface coating provides corrosion protection and sturdy reinforcement at 90° corners. Ideal for installation with a clinching tool.



Product Data and Ordering Information

Material: .0.012 min thickness, G30 galvanized
Dimensions: 1-1/4" leg x 1-1/4" leg
Part Number: CBKEGB

Length	Pieces Per Carton	Cartons Per Pallet	Feet Per Carton
7'	72	48	504
8'	63	48	504
9'	56	48	504
10'	50	48	500
12'	42	48	504



For 90° Angles

Drawing not to scale

All Phillips products are made in the U.S.A.

ASTM and Code Standards

Phillips klinchSTIK® corner bead meets or exceeds:

- ASTM C 1047 Standard Specification for Accessories for Gypsum Wallboard.
- ASTM A653 Standard Specification for Steel Sheet, Zinc-Coated (Galvanized) or Zinc-Iron Alloy-Coated (Galvannealed) by the Hot-Dip Process

SDS and other technical information available at www.phillipsmfg.com.

Lead Credits for Recycled Content

MR2 – The steel and vinyl used in Phillips Manufacturing products is 100% recyclable.

MR4 – Phillips Manufacturing steel and vinyl products have a minimum of:

Total recycled content: 30%
Post-consumer recycled content: 25%
Pre-consumer recycled content: 5%

Storage

Avoid bending or other damage and store in a dry place protected from moisture.