

DIAMOND DOWEL SYSTEM - INSTALLATION GUIDE

Install the Diamond Dowel® System per PNA's installation guide using a full-depth bulkhead. PNA does NOT endorse any other methods of installation including use of partial-depth EPS forms.

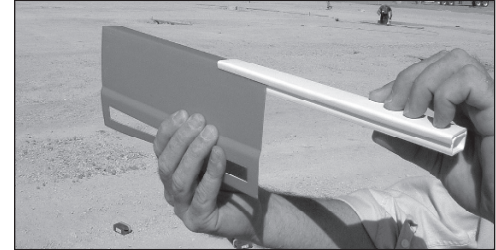
STEP 1

Mark the center point for the spacing of each Diamond Dowel® pocket former on the top of the bulkhead along entire length. Set bulkheads along the construction joints.

STEP 2

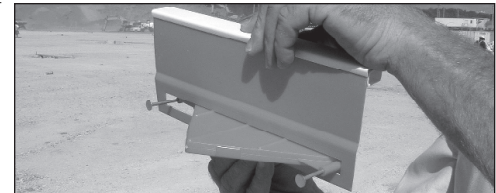
In each box of Diamond Dowel® pocket formers is a plastic bag containing an installation template. Based on slab depth, insert the correct tube in the installation template. Engineering may break the limits of slab depth shown in this table.

SLAB DEPTH	ORANGE - 1/4" (ORANGE - 6 mm)	YELLOW - 3/8" (BLACK - 10 mm)	GREEN - 3/4" (PURPLE - 20 mm)	USE
	7 in (175 mm)		9 in (225 mm)	11 in (275 mm)
6 in (150 mm)		8 in (200 mm)	10 in (250 mm)	Slide WHITE tube onto template
5 in (125 mm)		7 in (175 mm)	9 in (225 mm)	Slide BLACK tube onto template
4 in (100 mm)		N/A	N/A	Slide GREY tube onto template



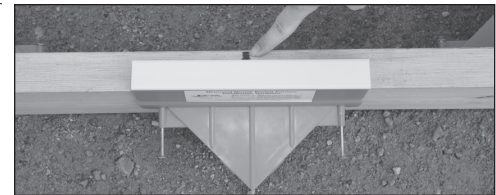
STEP 3

Insert the Diamond Dowel® pocket former into the installation template. The installation template ensures that the Diamond Dowel® pocket former is located at the midpoint of the slab thickness and that the minimum requirement of 2-1/8 inches (60 mm) of coverage of concrete over the dowel is maintained.



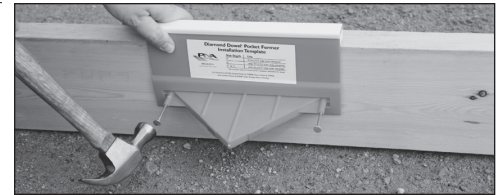
STEP 4

Line up the mark on the top of the bulkhead with the center of the installation template.



STEP 5

Nail the Diamond Dowel® pocket former to bulkhead and remove installation template. Repeat at specified spacing along entire length of bulkhead. Place Diamond Dowel® System up to within 6 inches (150 mm) of joint intersection per industry guides.

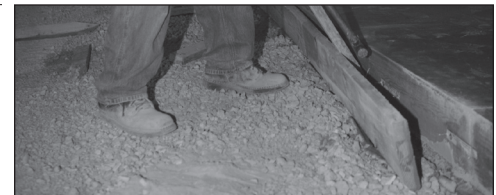


STEP 6

Place and finish first slab. Use internal vibration to consolidate the concrete around the Diamond Dowel® pocket former per industry guides.

STEP 7

Strip bulkheads and bend nails flush with the joint face.



STEP 8

Insert the Diamond Dowel® plate into the slot created by the Diamond Dowel® pocket former. Center the corner of the plate in the middle of the label and push straight through the label into the pocket former. Do not hammer or use excessive pounding force to insert Diamond Dowel® plate. Diamond Dowel® plate should be inserted within 48 hours.

Place and finish the second slab. Use internal vibration to consolidate the concrete around the Diamond Dowel® plate per industry guides.

