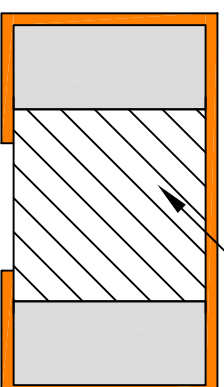


PNA Square Dowel

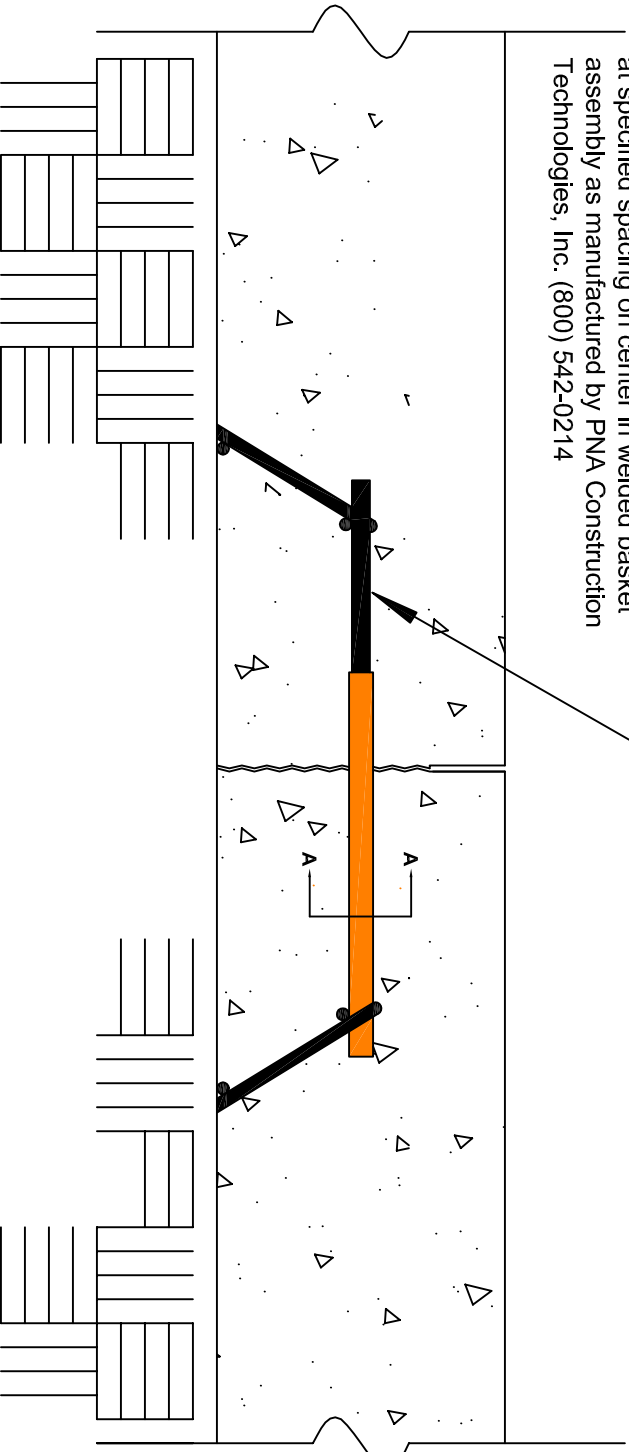


PNA clip with foam on each side of  
dowel extending to within  $\pm 3/16$ " of  $2/3$   
the length of the dowel to allow for  
horizontal movement

A

Dowel + Clip Section View

$\frac{1}{2}$ " x  $\frac{1}{2}$ " (1/2", 3/4", 1" or 1-1/4") Square dowels  
at specified spacing on center in welded basket  
assembly as manufactured by PNA Construction  
Technologies, Inc. (800) 542-0214



SHEET#

SDB-2

## PNA Square Dowel Basket Section View

DATE August 2007

SCALE 3" = 1'-0"

JOB #

DRAWN BY MSS

APPROVED

© 2007 PNA Construction Technologies



www.pna-inc.com

Nine Dunwoody Park, Suite 111 (800) 542-0214  
Atlanta, GA 30338 fax (770) 455-6803

©PNA Construction Technologies, Inc. All rights reserved. Diamond Dowel®, Armor-Edge®, Load Plate Basket® and PD3 Basket® are registered trademarks and Hydracure™ and Square™ Dowel Clip are trademarks of PNA Construction Technologies, Inc. Products shown may be covered by one or more of U.S. patents #6,775,952; #6,354,760; #6,618,125; Great Britain patent #1034340; Mexico patent #22942; New Zealand patent #504785; India patent #203607 and other pending patents.