

# Before you protect...

# Clean

## New Construction Cleaners

### 600 Detergent

Dissolves mortar, grout, dirt and other stains on new masonry.

### Vana Trol®

Cleans light-colored brick prone to metallic staining.

### 101 Lime Solvent

Strips common construction stains from dark brick, concrete block and more.

### Concrete Brick Cleaner

Non-etching cleaner removes excess mortar, clarifies joints and improves color-uniformity.

### Custom Masonry Cleaner

Improves color uniformity while cleaning architectural concrete.

### Burnished Custom Masonry Cleaner

Cleans and improves color uniformity on smooth and polished concrete.

### Manufactured Stone Cleaner

Improves color and gets rid of common construction soiling and atmospheric soiling with no danger of etching.

### Thin Brick Cleaner

Specialized cleaner removes smears of latex-modified mortar from thin-brick veneers.

### Safety Klean

Removes excess mortar and job-site soiling without hydrochloric acid components.

### White Scum Remover

Dissolves hard salt deposits other cleaners can't, on brick and tile.

### 800 Stain Remover

Rids buff/white brick of metallic stains.

### Ferrous Stain Remover

Takes rust, manganese and other metallic stains off brick, concrete and stone.

### Light Duty Concrete Cleaner

Cleans architectural and engineered concrete without danger of etching.

### Heavy Duty Concrete Cleaner

Concentrated cleaner improves color uniformity on standard, colored, precast and block.

## Restoration Cleaners

### EK Restoration Cleaner

Near-neutral pH cleaner simplifies wastewater handling while dissolving dirt, carbon and more.

### Light Duty Restoration Cleaner

Strips moderate atmospheric and oxidation stains from dense masonry and glass.

### Restoration Cleaner

Scours carbon stains off brick, unpolished granite, sandstone, exposed aggregate and more.

### Heavy Duty Restoration Cleaner

Concentrated power cleanser for unpolished granite, sandstone, terra cotta, brick and slate.

### 766 Limestone & Masonry Prewash

Nonacidic gel dissolves heavy carbon crusts on nearly any masonry surface.

### Limestone Restorer

Frees unpolished limestone, cast stone and concrete from mildew, atmospheric stains and more.

### SafRestorer

Safe around most metals, this low-odor restoration cleaner cuts atmospheric and carbon staining, white scum and more.

### BioKlean™

Rids horizontal and vertical masonry and stone of biological and atmospheric staining.

### Heavy Duty Paint Stripper

Nonflammable gel cuts multiple paint and coating layers on most masonry.

### SafStrip

High-strength paint and coating remover works fast without methylene chloride, harsh acids, caustics or solvents.

### SafStrip 8

Neutral pH paint stripper breaks the bond of the toughest coatings, without using methylene chloride or methanol.

### Safety Peel 1

Non-methylene chloride paste "peels" from masonry surfaces for safe disposal after trapping contaminants.

### EIFS Clean 'N Prep

Safely cleans sensitive Exterior Insulated Finish Systems and preps for further coatings.

### 2010 All Surface Cleaner

Next-generation cleaner/degreaser wipes out light-to-severe stains on nearly any surface.

### BioWash®

Safely removes biological staining from most concrete, stone and masonry surfaces.



# Protective Treatments

Innovative solutions for buildings.™



**PROSOCO**  
SINCE 1939

3741 Greenway Circle • Lawrence, KS 66046  
1-800-255-4255 • www.prosoco.com

**PROSOCO**  
SINCE 1939



# Protective Treatments

## Water ruins expensive masonry

Durable and beautiful though it is, over time simple rainwater can visibly decay and stain unprotected concrete, brick and stone.

Rainwater soaks into masonry. It dissolves natural salts that recrystallize when the surface dries. The salts build up in the masonry pores from repeated wet/dry cycles. In cold weather, water freezes and expands inside the masonry pores. At first, the cracks and fractures from wet/dry and freeze/thaw cycles are microscopic. They don't stay that way.

When air leakage carries water vapor into the wall assembly through seams, cracks and pinholes in sheathings and CMU backup, you've got real trouble. That vapor condenses on cold surfaces. Gallons of water get into a wall that way, over the course of a year. And that creates conditions for mold and lawsuits, high energy costs, and discomfort for occupants

Combined with other natural forces, such as extreme temperatures and biological growth, this progressive decay can turn an expensive masonry investment into an eyesore and liability.

Water subjects unprotected masonry to:

- Cracking, spalling and delamination
- Efflorescence
- Lime run
- Rust stains
- Damp walls
- Mold, moss and lichen growth
- Corrosion from acid rain
- Reduced thermal insulation

## Stop water damage

### Step 1: Protect the sheathing or CMU backup.

Before the first brick goes up on your new building, seal the sheathing with a breathable, durable, continuous air and water-resistive barrier.

### Step 2: Protect the masonry with a high-quality water repellent.

When water can't invade the masonry, sheathing or CMU backup, neither can any of the previously described problems. Protective treatments let the beauty and value of masonry investments endure.

Sure Klean® Weather Seal penetrating water repellents provide an invisible, breathable shield against the water-related enemies of masonry. It's protection that lasts — in most cases, 10 to 15 years.

A high-quality water-repellent on the masonry, combined with an effective air and water-resistive barrier on the sheathing or CMU backup is protection that defeats rain, snow, sleet and ice every time.

## Water is not the only enemy

### Stop oil, food, grease and other staining

The value of a paver, stone, ceramic tile or architectural concrete surface drops with every ground-in bit of grease, grime, food, oil, smoke or drop of water that soaks or smears into it.

Don't stand for that. PROSOCO's Paver Kare® and Stand Off® products keep those stains at bay.

From major commercial or civic paver installations to the intimacy of a family walkway and patio, Paver Kare® products keep water, weeds and dirt out. They seal in beauty, durability and value.

Stand Off® protective treatments control staining and deterioration of grout, ceramic tile, natural stone and architectural concrete. Protected surfaces last longer and are easier to maintain. These high-quality, penetrating treatments chemically bond with the substrate for long-lasting, invisible protection. Surfaces keep their natural appearance. Unlike conventional repellents, Stand Off® products won't blush or form traffic patterns.

### Resist abrasion, salt attack and traffic

PROSOCO's Consolideck® products ensure your horizontal concrete surfaces can stand up to the pounding of industry, weather or both! Easy-application, VOC-compliant protective treatments cure, harden, densify and beautify concrete flat work, new or old — and block the attack of de-icing chemicals, preventing cracks, spalls and potholes.

### Win the war against graffiti

Left alone, graffiti not only doesn't go away — it attracts more graffiti. When graffiti vandals attacked Grant's Tomb in New York and the Vietnam Veterans' Memorial in Kansas City, Mo., experts understood rapid removal is the key to stopping graffiti. They understood that PROSOCO's Defacer Eraser® products are the key to rapid removal.

## Repair damaged masonry

Even when the damage is done, it's not too late. Consolidation treatments repair and strengthen decayed concrete, brick and stone. They replace the masonry's natural binding material lost to weathering.

Conservare® consolidation treatments have brought strength and durability back to some of America's most treasured architecture, including

- U.S. Capitol
- Harvard's Memorial Hall
- City and County Building, Salt Lake City
- State capitols across the nation, and many more



# Customer Care

One of the most important ingredients in any masonry cleaner isn't in the cleaner.

It's the technical support and customer service that comes with the cleaner. PROSOCO wants to make sure you have the right product and the right information to succeed.

Factory-trained representatives are available throughout the U.S. to help with specifications or troubleshooting. PROSOCO's Customer Care representatives are just a toll-free call away at 800-255-4255 to help you find the right product, the nearest rep or a solution to a problem.

Visit our website at [www.prosoco.com](http://www.prosoco.com) for useful information about products, specifications and more.

## Product Data Sheets and Material Safety Data Sheets

Getting them is as easy as visiting PROSOCO's website at [www.prosoco.com](http://www.prosoco.com) or calling Customer Care at 800-255-4255.



**Colleen "Coke" Peters with PROSOCO since 1982.**

Colleen, senior product support specialist, is part of PROSOCO's nationwide technical support network for construction professionals, including contractors, architects, specifiers and distributors.

Penetrating, breathable water repellents keep water out of valuable masonry, extending service life and preserving appearance and value.

*For VOC information on PROSOCO's protective treatments, see the applicable product data sheet.*



# Protective Treatments

## graffiti removal and prevention

Rapid removal is the key to stopping graffiti. Studies show that graffiti vandals usually move on from locations where their work is quickly erased. But choose your weapons well — harsh chemicals or abrasives can permanently damage your masonry investment. The wrong solution can lock graffiti in — permanently. That's big trouble, because graffiti attracts more graffiti.

PROSOCO's Defacer Eraser® graffiti removal and protection line has the right product for you. These products won't change the natural appearance of your masonry — and they won't let anyone else change it either.

### **Sure Klean® Weather Seal Blok-Guard® & Graffiti Control**

*For concrete block and other porous masonry*

Rain and graffiti sink right in exterior concrete block and other porous masonry — but NOT when Weather Seal Blok-Guard® & Graffiti Control is on the job. It penetrates and fills pores, stopping water penetration while letting the masonry “breathe.” Treated surfaces resist graffiti penetration — graffiti practically slides off treated walls with application of Defacer Eraser® Graffiti Wipe. Blok-Guard® & Graffiti Control also makes it tough on efflorescence, mildew and other moisture-related stains. Application is easy with low-pressure spray, brush or roller.

### **Sure Klean® Weather Seal Blok-Guard® & Graffiti Control II**

*For concrete block, porous clay brick, precast concrete, porous stone, stucco*

This water-based graffiti and water repellent has all the protective power of its solvent-based cousin. Like the original, breathable Blok-Guard® & Graffiti Control II penetrates porous masonry and concrete to keep destructive water and unsightly graffiti from soaking in. The difference? Blok-Guard® & Graffiti Control II meets all VOC (Volatile Organic Compound) regulations nationwide, San Diego to New York. Like the original, it won't change the treated surface's appearance — and it won't let anyone else change it either!

### **Defacer Eraser® Sacrificial Coating SC-1**

*For virtually all hard surfaces needing graffiti protection*

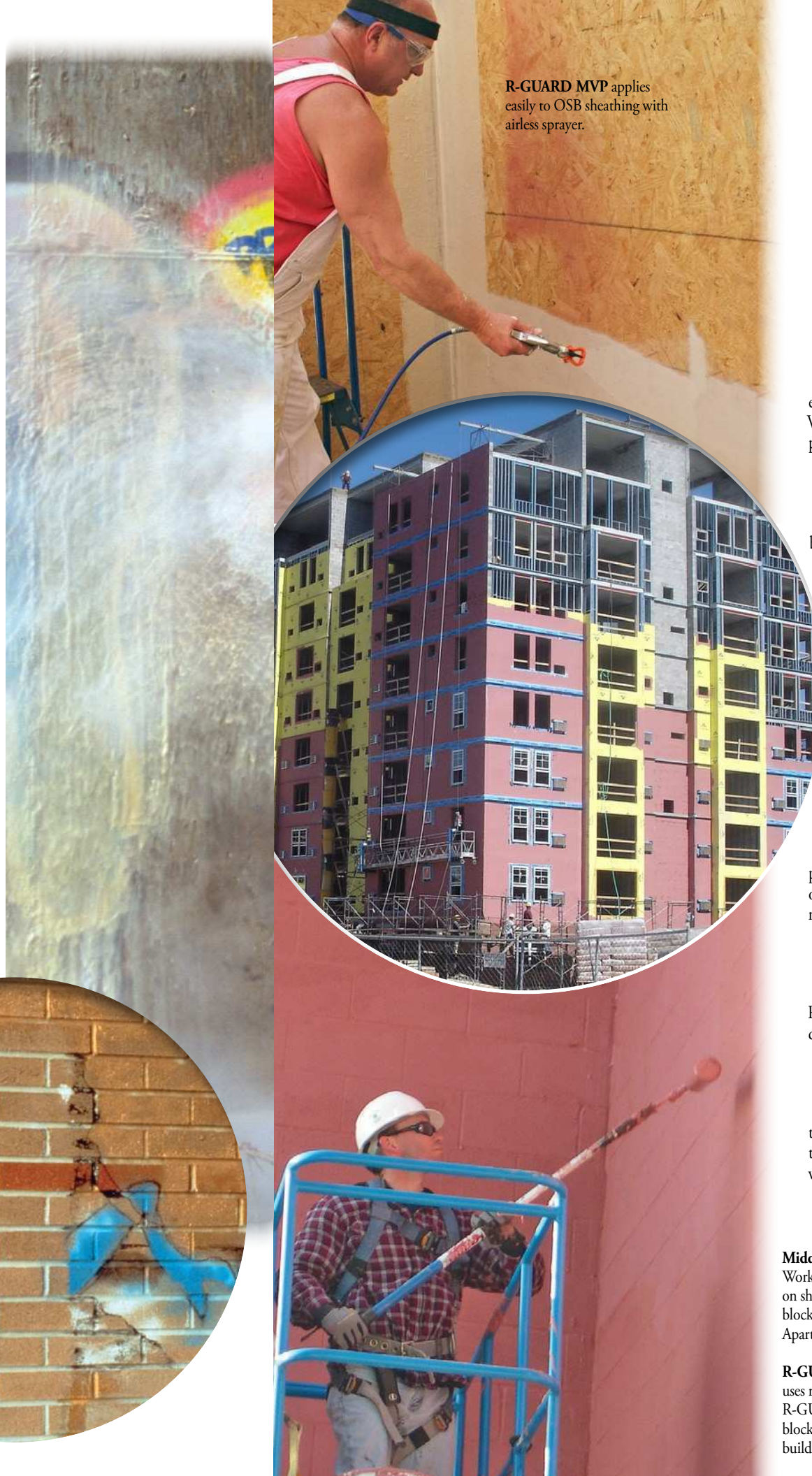
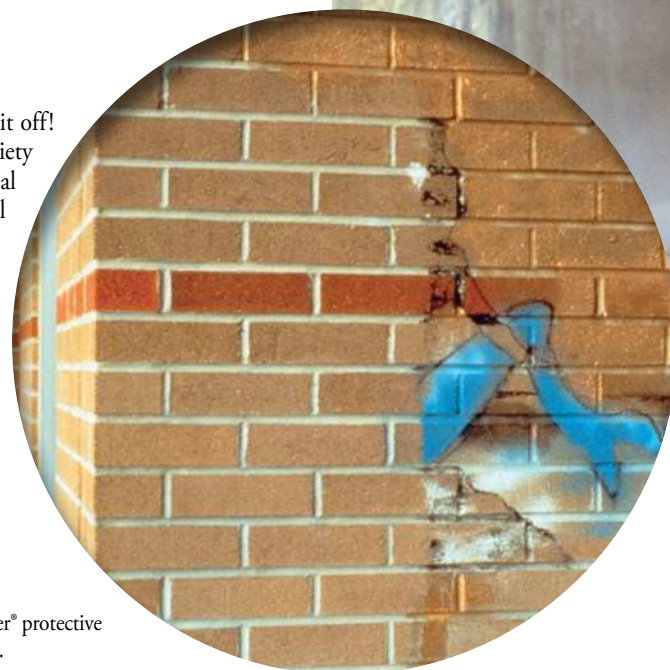
Paint THIS! Graffiti vandals give it their best shot, but it all comes off safe and easy with a simple high-pressure hot-water rinse. That is, when you protect your masonry with Sacrificial Coating SC-1. The clear, water-based coating allows cost-effective control of the most popular graffiti targets. It won't damage your masonry like traditional chemical strippers and abrasives. No hot water? Cold water works, with a boost from Defacer Eraser® Graffiti Wipe. Reapply after each use, and say goodbye graffiti.

### **Defacer Eraser® Graffiti Wipe**

*For all masonry surfaces — wood and metal, too!*

It's easy to slap graffiti on a wall. Now it's just as simple to wipe it off! Safe, easy-to-use Graffiti Wipe takes the spray paint off a wide variety of masonry protected with Sacrificial Coating SC-1, Weather Seal Blok-Guard® & Graffiti Control or Blok-Guard® & Graffiti Control II. Graffiti Wipe also works on unprotected metal, wood and most glass. Smooth, dense surfaces — just put it on a towel and wipe away your graffiti woes. Rough or porous surfaces — a brush or low-pressure spray does the trick. Made with extracts from citrus fruit, Graffiti Wipe rinses easily in hot or cold water. It also gives a high-powered boost to cold-water rinses on Sacrificial Coating SC-1, when hot water isn't an option.

**Rapid removal** is the key to stopping graffiti. Defacer Eraser® protective treatments and graffiti cleaners are the key to rapid removal.



R-GUARD MVP applies easily to OSB sheathing with airless sprayer.

# Air & Water-Resistive Barrier

**PROSOCO R-GUARD® and PROSOCO R-GUARD® MVP**

*Seamless fluid-applied system*

Projects calling for the mold-preventing, energy-saving benefits of air & water-resistive barriers are skyrocketing. PROSOCO R-GUARD® and PROSOCO R-GUARD® MVP (Maximum Vapor Permeability) Air & Water-Resistive Barriers bring both benefits — and a lot more — to your projects.

### **Mold prevention**

These vapor-permeable or “breathable” fluid-applied coatings for structural walls and CMU back-up prevent condensation that creates conditions for mold and promote drying.

### **Energy savings**

The R-GUARD and R-GUARD MVP systems stop destructive air leakage through the building envelope by covering all seams, joints and transitions. That prevents expensively conditioned air from leaking out, carrying energy dollars. It keeps hot or cold outside air from leaking in and overburdening the HVAC system.

A National Institute of Standards and Technology study found that stopping air leaks saves buildings up to 40 percent or more in natural gas costs, and 25 percent or more in electricity. Oak Ridge National Laboratory tests confirm R-GUARD's ability to promote dry, mold-free walls, and stop costly air leaks.

### **Code compliant**

The International Building Code requires a water-resistive barrier as a secondary drainage plane behind exterior claddings. R-GUARD, approved by the IBC and the Air Barrier Association of America, meets that requirement. The water-based systems also comply with regulations in the many states prohibiting solvent-carried coatings.

### **Six-month construction window**

Many fluid-applied barrier systems can't be exposed to sunlight for more than 7 -30 days. The R-GUARD systems stand up to weather for up to 6 months in case of inevitable construction delays — an industry best.

### **Easy, labor-saving application**

Both R-GUARD systems install quickly and easily with roller or airless sprayer. R-GUARD tapes, membranes and fabrics make it simple to detail sheathing seams, rough openings and transitions. In fact, a study shows the R-GUARD components are 75 percent faster to install than sheet wraps.

#### **Middle: R-GUARD**

Workers apply R-GUARD on sheathing and concrete blocks on the Cloverleaf Apartments, Natick, MA.

**R-GUARD** Technician uses roller to easily apply R-GUARD to concrete block on the H & R Block building, Kansas City, MO.

mold prevention • code compliance • energy savings



# Protective Treatments

## masonry, stone and concrete

For decades, these remarkable treatments have helped control maintenance, repair and cleaning costs on masonry, concrete and natural stone. From roads and bridges to schools and skyscrapers, professionals choose the industry's leading silane and siloxane technologies to protect and extend the service life of our built environment.

### **Weather Seal Siloxane PD**

*For architectural and steel-reinforced concrete, GFRc, and most masonry and stucco surfaces*

Ready to go to work when you are, Weather Seal Siloxane PD (Predilute) penetrates deeply into your masonry. It chemically bonds with the substrate to lock out water and the destructive salts and dirt water carries. When you keep water out, you keep out spalling, cracking, staining, mold, mildew and other expensive problems. Breathable, water-based Siloxane PD is low-odor, suitable for new “green” concrete, and ideal for field or in-plant treatment of concrete or GFRc.

*Service life: 10 years+*

### **Weather Seal Siloxane WB Concentrate**

*For architectural and steel-reinforced concrete, GFRc, and most masonry and stucco surfaces*

Water-based Weather Seal Siloxane WB Concentrate provides penetrating, breathable protection for dense or porous substrates. It's concentrated for economy, easy storage, transport and container disposal. Dilute at the job site with up to 19 parts water. The solvent-free treatment can protect up to 4,000 square feet per gallon. Siloxane WB is low-odor, suitable for new “green” concrete, and ideal for field or in-plant treatment of concrete. Cleanup is easy with soap and water or Stand Off® Rinseless Cleaner.

*Service life: 10 years+*

### **Weather Seal Natural Stone Treatment**

*For natural stone and clay brick*

Weather Seal Natural Stone Treatment was a “natural” for protecting the Empire State Building's Indiana limestone cladding in 1995. Specifically developed to impart the power of siloxane protection to most limestone, marble and other calcareous surfaces, Natural Stone Treatment will not alter the natural appearance of stone. It WILL reduce mold, mildew and atmospheric staining. And it's as good indoors as it is out. Alkali-resistant NST protects mortar and grout joints, too – new and old alike.

*Service life: 10 years+*

### **Weather Seal Natural Stone Treatment WB**

*For most clay masonry and unpolished stone*

When you add the advantages of a water-based protective treatment to the power of Weather Seal Natural Stone Treatment, you get Weather Seal Natural Stone Treatment WB. Like the original, this new edition uses silicone technology to shield valuable stone and other masonry surfaces from destructive water penetration. Because it's water-based, Natural Stone Treatment WB is low-odor and has reduced flammability. Breathable and penetrating, NST WB preserves the service life and beauty of stone and masonry surfaces.

*Service life: 10 years +*

### **Weather Seal Blok-Guard® & Graffiti Control**

*For concrete block and other porous masonry*

Rain and graffiti sink right in exterior concrete block and other porous masonry – but NOT when Weather Seal Blok-Guard® & Graffiti Control is on the job. It penetrates and fills pores, stopping the water penetration of normal weathering. Treated surfaces resist graffiti penetration — graffiti practically slides off treated walls with application of Defacer Eraser® Graffiti Wipe. Blok-Guard® & Graffiti Control also makes it tough on efflorescence, mildew and other moisture-related stains. Application is easy with brush, roller or low-pressure spray.

*Service life: 5-7 years*

### **Weather Seal Blok-Guard® & Graffiti Control II**

*For concrete block, porous clay brick, precast concrete, porous stone, stucco*

This water-based graffiti and water repellent has all the protective power of its solvent-based cousin. Like the original, breathable Blok-Guard® & Graffiti Control II penetrates porous masonry and concrete to keep destructive water and unsightly graffiti from soaking in. The difference? Blok-Guard® & Graffiti Control II meets all VOC (Volatile Organic Compound) regulations nationwide, San Diego to New York. Like the original, it won't change the treated surface's appearance – and it won't let anyone else change it either!

*Service life: 5-7 years*

### **Weather Seal H40**

*For porous and deteriorating stone, brick and most natural stone*

This deep-penetrating, consolidating water repellent not only keeps water out of masonry, it also increases mechanical and compressive strength. H40 strengthens weathered surfaces and soft mortar joints. It's ideal for masonry already damaged by water, wear and weathering. H40 also helps masonry resist the attack of destructive mold, mildew and fungal growth. Great for high-humidity areas or anywhere biological staining makes its unwelcome appearance.

*Service life: 10 - 12 years*

### **Weather Seal SL100 Water Repellent**

*For precast, steel-reinforced and form-finished concrete, GFRc and most natural stone*

Weather Seal SL100 offers maximum penetration and superior performance on dense and color-sensitive surfaces. You get invisible, solvent-free protection against water, salt, and other water-carried contaminants. SL100 is economical, with coverage rates 2 to 4 times that of conventional solvent-reduced water repellents. What it won't do is change masonry appearance, or stick to nearby glass, metal or painted surfaces.

*Service life: 10-15 years*





# Protective Treatments

## masonry and stone consolidation

Since the 1980s, conservators have used PROSOCO's Conservare® treatments to save much of North America's most spectacular and valued architecture from decay and loss. New York's Trinity Church, the U.S. Capitol, Indianapolis' Soldiers and Sailors Monument and countless other projects have gotten new leases on life, thanks to the stone-strengthening characteristics of these remarkable products.

### Conservare® HCT (Hydroxylating Conversion Treatment)

*For marble, travertine, limestone and other carbonate stones*

Consolidation of crumbling marble and limestone has always been difficult. These carbonate surfaces frequently lack bonding sites which consolidants such as Conservare® OH100 and H100 require to strengthen and protect them from wear. Used as a pre-treatment to consolidation, Conservare® HCT forms a well-adhered conversion layer on the surface of carbonate grains. The conversion layer reduces the vulnerability of marble and limestone to acid rain and weathering, and makes the surface responsive to surface strengthening and protective treatments.

### Conservare® OH100 Consolidation Treatment

*For most types of natural stone, concrete, stucco, brick, and terra cotta*

Conservare® OH100 is a ready-to-use consolidation treatment that stabilizes decaying masonry by using silicone dioxide to replace natural binding materials lost to weathering. This "replacement" binder is also mineral — very similar to the stone it strengthens. Additionally, it's acid-rain resistant. Conservare® OH100 penetrates deeply, doesn't form surface crusts, and lets the treated surface "breathe." It's also an effective pre-treatment for crumbling substrates which have to be strengthened just to allow cleaning, patching or coating.

### Conservare® H100 Consolidation Treatment

*For most types of natural stone, concrete, stucco, brick and terra cotta*

This deep-penetrating consolidation treatment strengthens deteriorated masonry while increasing its resistance to further decay — including acid rain. Conservare® H100 replaces the natural cement decayed stone has lost to weathering. The tough, new silicon dioxide binder is virtually identical to that of natural stone. Breathable, easy-application Conservare® H100 Consolidation Treatment helps give new life to old and valued masonry.

## color coat

### Breathable Masonry Coating II

*For concrete, brick and stone masonry*

When moisture gets trapped in masonry because of coatings that don't "breathe," coatings may fail, and masonry can crack and spall. Neither happens with BMC® II, an advanced edition of the BMC® product used on the U.S. Capitol. Tests reveal BMC® II is twice as breathable as most latex paints, and up to seven times as breathable as traditional oil-based paints. In adhesion test ASTM D 4541, the concrete itself pulled apart before the coating could be pulled off. BMC® II stuck against pressure of up to 367 pounds per square inch (psi). BMC® II is available in four different bases, allowing for a nearly unlimited range of colors. BMC® bases are custom tinted by local distributors.

*Service life: 10-15 years*

### Weather Seal GP

*For concrete and brick*

This economical, general-purpose, water-based silane-siloxane blend is ready to go to work right out of the container. Easily applied with brush, roller or low-pressure spray, low-odor Weather Seal GP guards concrete, stucco and most masonry against cracking, spalling, staining and other water-related damage. Penetrating, breathable and VOC compliant, Weather Seal GP is ideal for many field applications.

*Service life: 3-5 years*

### Sure Klean® Custom Masonry Sealer

*For architectural concrete block, cast stone, brick and many other surfaces*

Custom Masonry Sealer weatherproofs architectural concrete, porous concrete block, cast stone, precast panels — even wood surfaces! This long-lasting, breathable treatment interrupts the destructive "freeze/thaw" cycle by letting vapor out, without letting liquid water in. It also keeps out the dirt and corrosive salts that water often carries. Protection against many types of graffiti, and excellent UV stability are also part of the package.

*Service life: 5-7 years*

### Sure Klean® Burnished Block Sealer

*For burnished concrete block*

Whether the block is on the building or on the way to the building, Burnished Block Sealer offers appearance-improving protection. Apply in-plant to shield burnished block from weather and the scuffs and scrapes of transport. On the building, beautiful Burnished Block Sealer makes it easier to remove excess mortar and other job-site soiling. After cleaning, reapply for more glossy weather protection.

*Service life: 5-7 years*

Consolidating decaying limestone has long been problematic. Conservare® HCT answers the problem by strengthening carbonate stone, increasing its resistance to weathering and acid rain, and preparing it for further consolidation and protective treatments. (Massachusetts State Capitol, Boston).

Though the centuries have taken their toll, it's not too late for this sandstone Madonna at Lichfield Cathedral, Lichfield, England.





# Protective Treatments

concrete, clay and stone pavers hardscapes

From public squares and vast pedestrian malls to intimate patios in upscale residential neighborhoods, nothing says “quality and value” like a hand-laid paver hardscape. But that value drops with every tire mark, grease stain or other contaminant. Construction soiling, water penetration, de-icing salts and other problems can diminish the value of the most beautiful paver installations.

Keep those culprits at bay with Paver Kare® cleaners and protective treatments from PROSOCO – created specifically for paver professionals by the makers of Sure Klean® products.

## **Paver Kare® Sand Joint Stabilizer**

*For concrete and brick pavers*

Keep the sand in the paver joints and the weeds out with new Sand Joint Stabilizer. This unique protective treatment consolidates paver joint sand to a mortar-like consistency. It holds sand in joints despite cleaning, weather and traffic. It guards pavers and joints against harmful water penetration. Sand Joint Stabilizer is easy to apply; fast to dry.

## **Paver Kare® Paver Enhancer**

*For concrete, clay and most stone pavers*

Trade in efflorescence, mildew and traffic-related staining for deeper, richer, more uniform color on paver surfaces. Water beads up and runs off treated surfaces, yet there's no surface film to prevent “breathability” or create a slip hazard.

## **Paver Kare® Paver Enhancer WB**

*Water-based, color-enhancing protective treatment*

Water-based Paver Enhancer WB is perfect for places with restrictive VOC regulations. This easy-application protective treatment delivers deep, rich color enhancement and breathable, penetrating water-repellency on clay, concrete or stone pavers, new or old.

## **Paver Kare® Deep Sheen**

*For concrete, clay and most stone pavers*

Glossy, slip-resistant Deep Sheen is the perfect protective treatment for pavers inside or out. The lustrous, yet chemical-resistant finish shields expensive pavers from the etch and stain of acidic and caustic chemicals, ranging from food and drink to powerful cleaners. Water-repellent Deep Sheen stands up to weather, rain or shine, with no blushing, yellowing or dulling out.

## **Paver Kare® Deep Sheen WB**

*For concrete, clay and most stone pavers*

Glossy, slip-resistant Deep Sheen, the perfect protective treatment for pavers inside or out, now comes in a VOC-compliant water-borne version. Lustrous, chemical-resistant Deep Sheen WB still shields expensive pavers from the etch and stain of food, drink, cleaning agents and weather, while meeting all known volatile organic compound regulations, Maine to California.

## **Paver Kare® Penetrating Water Repellent**

*For concrete, clay and most stone pavers*

Penetrating Water Repellent keeps salt, water, and the dirt and grime water carries OUT of expensive paver installations. Penetrating Water Repellent goes in deep to help pavers keep their natural look, texture and appearance despite weather and traffic from people and pets. Low-odor and environmentally friendly, Penetrating Water Repellent adds years to the service life of paver installations large or small, new or old.

## composite decking

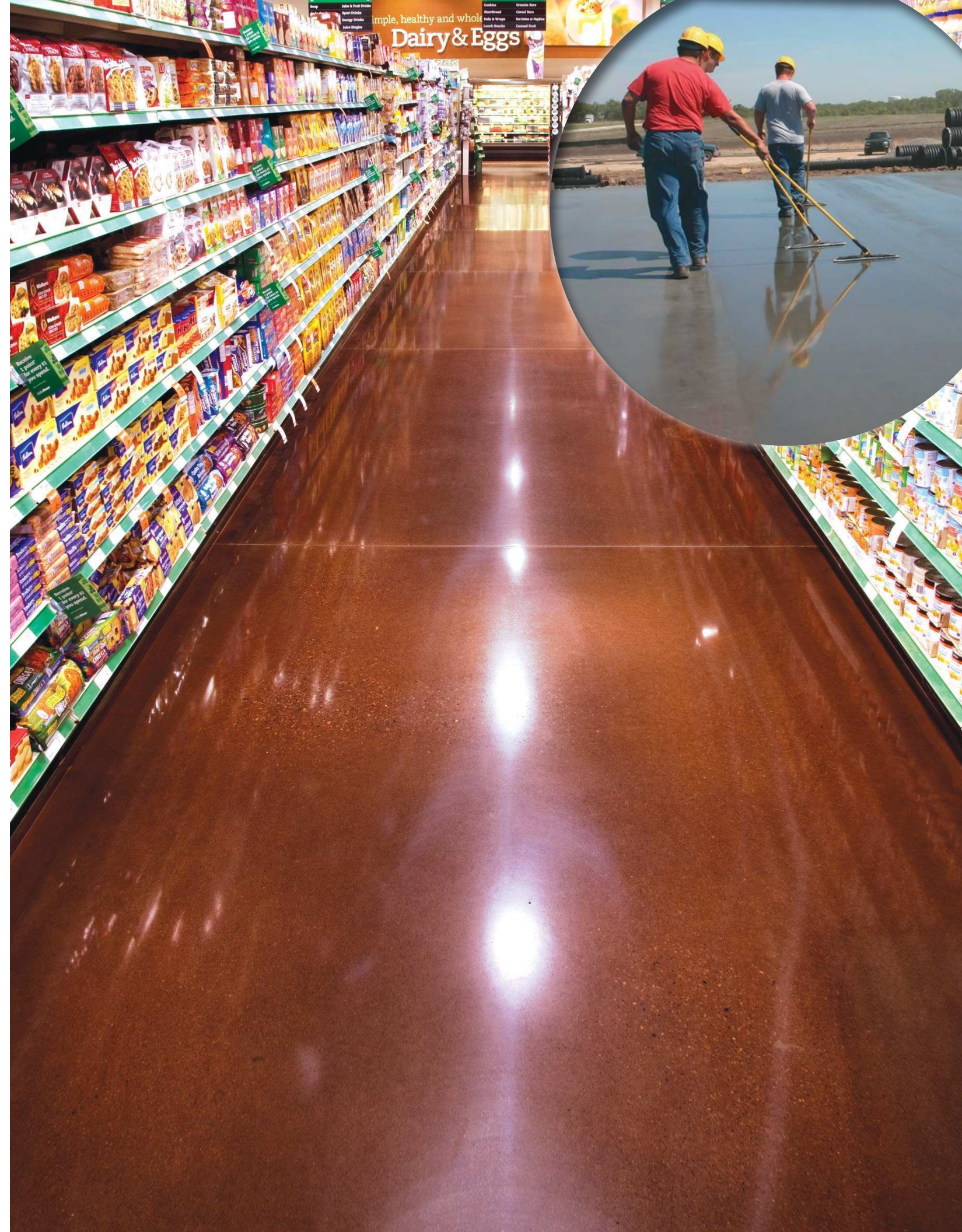
### **PSC Composite Deck Protector**

*Keeps water, oil and grime out of composite decks*

Tough as they are, wet composite decks still provide a home for mold and mildew. Keep rain, and spills of food and drink from soaking in with easy-application Composite Deck Protector. Specially designed for composites, this VOC-compliant protective treatment won't change the appearance, color or texture of the deck – and it won't let anything else change it either! Makes maintenance cleaning easier, too.



Water beads up on a composite deck treated with PSC Composite Deck Protector.





# Protective Treatments

## concrete flatwork/ finished concrete flooring

Concrete has taken a pounding ever since the Romans introduced it 2,200 years ago. PROSOCO protective treatments help concrete flatwork stand up to the worst abrasion, traffic, spills and weather the world can muster. Harder, denser, glossier, more chemically resistant concrete means longer service life, easier maintenance and greater value.

Parking deck or factory floor, PROSOCO has the right cures and protective treatments for your concrete flatwork project.

### Consolideck® LS® (lithium-silicate)

*Premium sealer, hardener & densifier for horizontal concrete*

Easy-application LS hardens, densifies and protects concrete floors with no scrubbing or flushing – unlike old-fashioned sodium- and potassium-silicate treatments. It's perfect for any concrete floor – rugged industrial to highly-polished hospitality and everything in-between. LS is tested and certified to meet the nation's highest indoor air-quality standards.

### Consolideck® LS/CS®

*Economical sealer, hardener and densifier for horizontal concrete*

This fast, easy and economical treatment is the perfect alternative to difficult potassium and sodium hardeners for concrete floors. Treated floors resist abrasion, water, chemicals and traffic. Like its premium cousin LS, LS/CS uses no solvents, and is VOC-compliant nationwide. Just spray or mop it on, and let it penetrate. No flushing needed! Your floor is ready to take on the world in two hours – or less!

### Consolideck® LSGuard®

*Glossy sealer, hardener & densifier for concrete*

LSGuard combines high-gloss beauty and stain-resistance with the penetrating toughness of Consolideck® LS® – PROSOCO's premium sealer, hardener & densifier for concrete floors. The fast-drying, easy-application lithium-silicate treatment seals concrete floors with a rich, shiny protective finish that's both micro-thin and nail-hard. Burnished on as a topcoat for Consolideck® GemTone Stains, you get floors truly gem-like in brilliance, color and durability. And the high coverage rate – 1,000–1,500 sq. ft., means low installed cost.

### Consolideck® GemTone Stain

*Penetrating translucent color dye for concrete floors*

Applying new and improved GemTone Stain is the first step in turning dull gray concrete floors into colorful gleaming surfaces. Safe, water-based GemTone Stain goes on easily with pump-up sprayer and microfiber pad. Mix or match 18 translucent colors for an unlimited color palette.

### Consolideck® ColorHard

*One-step color and hardener for concrete floors*

Mix 4 ounces of ColorHard concentrate with one gallon of Consolideck® LS® lithium-silicate hardener/densifier. One step turns dull gray concrete into colorful, low-maintenance, ultra-durable, decorative concrete. ColorHard's 19 mixable, matchable non-toxic colors are perfect for any floor old or new, with options for both interiors and exteriors.

### Consolideck® GemTone ColorCoat

*High-performance color coating for concrete*

This durable, fast-drying industrial color coating was made for the toughest wear, traffic and maintenance-cleaning conditions. Its 15 colors are UV stable and perfect for any cementitious surface. No primer needed; easy brush or roller application.

### Consolideck® SafetyColor

*Safety striping and area-designation coating for concrete floors*

Durable, water-based and fast-drying SafetyColor is made for heavily-used industrial and commercial floors. Available in seven bright colors, low-odor, non-flammable SafetyColor is ideal for use on floors hardened and densified with Consolideck® lithium-silicate products. Durable under the toughest traffic and maintenance-cleaning conditions.

### Consolideck® SingleStep®

*Cure and seal for concrete*

No more slow, costly water-curing, or stripping chemical cures before sealing. Get it done in one fast, easy step. Roll, brush or spray SingleStep onto concrete new or old. It soaks in quickly, giving concrete a durable, water-repellent gloss. Keeps moisture in until the concrete is fully cured – then keeps destructive water and de-icing salts out. Perfect for decorative concrete.

### Consolideck® DuraSheen

*High-gloss cure and seal for concrete*

Ideal for new or old concrete, durable DuraSheen protects concrete from chemicals, water and abrasion – and looks great doing it! Old concrete gets a second life and new concrete cures to maximum hardness. Both get a premium, vibrant gloss and shine. Treated concrete won't "yellow" – independent lab tests confirm DuraSheen's non-yellowing characteristics outlast and outperform similar products.

### Consolideck® Saltguard®

*Deeply penetrating water & salt-barrier for concrete*

This breathable, deeply penetrating blend of silanes and siloxanes is the perfect answer to the corrosive salt air of coastal areas, and the destructive de-icing salts of winter weather everywhere. With a service life of 7 -10 years, Saltguard is ideal for parking decks, driveways and sidewalks, as well as brick, concrete, tile and most natural stone pavers.

### Consolideck® Saltguard® WB

*For horizontal and vertical concrete and many other masonry surfaces*

Now get the long-lasting power of Saltguard® in a water-based, VOC-compliant version that meets all state regulations, California to Maine. Just like the original Saltguard®, breathable, penetrating Saltguard® WB blocks the destructive attack of salt on concrete, whether it comes from corrosive salt air or the damaging de-icing salts of winter.



Inset photo: Transmission fluid, unable to soak in and stain this treated paver, awaits cleanup.



# Protective Treatments

## dimensional stone and tile

The value of a stone, ceramic tile or architectural concrete surface drops with every ground-in bit of grease, grime, food, oil, smoke or other contaminant that besmudges it. Water penetration, and the resulting destructive freeze-thaw cycle, can also stain expensive masonry, as well as cracking or flaking it.

You don't have to stand for that. Keep those enemies at bay with PROSOCO's Stand Off® products. Let the beauty — and value — of your masonry endure.

### Stand Off® SLX100® Water & Oil Repellent

*For granite, tiles, pavers and concrete*

This penetrating treatment protects dense, color-sensitive surfaces from the ravages of water and oil attack, including stains from spilled food and drink. Breathable SLX100® won't change surface appearance. It lets vapor out without letting dirt and water in. By keeping water out, it stops the destructive, water-carried salts that can corrode the rebar in reinforced concrete.

### Stand Off® Stone, Tile & Masonry Protector (STMP)

*For brick, tile, concrete and most natural stone*

Easy-to-use, low-odor STMP stops stain attack indoors and out. From motor oil on concrete garage floors, to orange juice, ketchup or wine on expensive restaurant tile, breathable, penetrating STMP keeps it from soaking in. Cleanup is easy with soap and water or Stand Off® Rinseless Cleaner.

### Stand Off® Limestone & Marble Protector

*For most natural stone, brick, tile and concrete*

Limestone & Marble Protector is made for protecting limestone and marble from water, oil and other destructive staining agents. Treated surfaces keep their natural appearance, color and texture. It also gives penetrating, breathable protection to most masonry. But there's nothing better for limestone and marble.

### Stand Off® Gloss 'N Guard

*For natural stone, tile, pavers and other masonry*

"The shine that shields" gives your natural stone tiles and pavers the deep lustrous finish that resists dirt, oil, scuff marks and more! Easy-to-use Gloss 'N Guard protects and enhances vertical as well as horizontal surfaces — indoors and out. The beautiful but durable protective coating improves slip resistance on honed and polished surfaces. It also simplifies maintenance cleaning, since even oil and organic stains can't penetrate.



### Stand Off® Gloss 'N Guard WB

*For all masonry types*

The water-based version of "the shine that shields" is a highly durable water-based acrylic protective coating for tile, pavers, terrazzo and other polished and unpolished masonry — horizontal and vertical. Gloss 'N Guard WB creates a lasting protective shield of unparalleled beauty and durability. The water-based formula means no solvent odor, easy soap and water cleanup, and reduced fire-hazard. Gloss 'N Guard WB complies with all known regulations limiting Volatile Organic Compound (VOC) content.

### Stand Off® Stain Barrier

*For all masonry types*

This economical, easy-to-use, protective treatment guards interior and exterior stone, quarry tile, concrete and masonry surfaces against oil, food and waterborne stains. Maintenance cleaning is fast and easy on surfaces treated with penetrating, invisible Stain Barrier. Low-odor Stain Barrier complies with all known VOC regulations.

### Stand Off® Color Enhancer

*Color enhancing protective treatment for natural stone*

Stand Off® Color Enhancer brings out the natural warmth, color and richness of stone counters, tabletops and floors — while keeping a wide range of contaminants — including oil, grease, food, drink and dirt — from soaking in. Low-odor and VOC-compliant, Color Enhancer is easy to apply with brush, cloth or low-pressure sprayer.

### Stand Off® Color Enhancer WB

*Water-based protective treatment for natural stone*

Indoors or out, Color Enhancer WB protects valuable stone surfaces against spills and stains, while enriching the stone's natural color. The water-based formula makes it compliant with VOC regulations from California to Maine. Easy-application, low-odor Color Enhancer WB is also great for clay and concrete pavers, new or old.

