

# R A V E N I N D U S T R I E S

# A C C E S S O R I E S

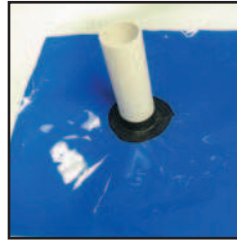
From tie-down fasteners to field seaming tape, Raven Industries has the accessories you need to maximize your film's versatility and minimize installation time on the job.

## VaporBond Tape (TVB4)



This white single-sided tape combines a heavy-duty, weather-resistant polyethylene backing with an aggressive rubber adhesive. VaporBond Tape offers excellent seaming capabilities for our materials with an "Easy Tear" feature to reduce installation time. Typical applications include vapor retarders, covers and liners. Available in a 4" x 210' roll.

## VaporBoot System (VBOOT)



The VaporBoot System is designed to assist in securing pipe and other penetrations that run vertically through the vapor retarder material. The VaporBoot System offers a quick solution and is delivered to the jobsite in a complete package including 25 VaporBoots and application tape to complete the installation. VaporBoots are produced from high performance Vapor Block material and are 18" x 18" with a precut center marker.

## Canvex® Seal Tape (TS4WT)



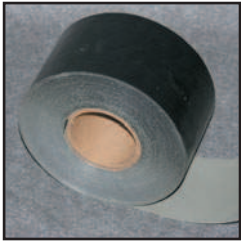
Canvex Seal Tape is a single-sided white woven tape that contains an acrylic adhesive with a release liner. It has excellent adhesion to polyethylene and the acrylic adhesive provides much longer life than many competitive tapes. It is recommended for taping the seams on in-wall vapor retarders and crawl spaces. Available in a 4" x 100' roll.

## Tarp Grabbers (BUTEZ)



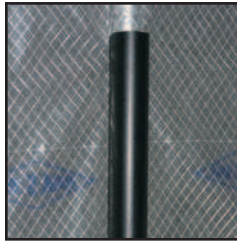
Add a grommet anywhere you need one. Tarp Grabbers are up to 4 times stronger than a brass grommet and are typically used in heavier plastic sheeting from 10 mil to 30 mil thick. Great for equipment covers, large storage covers and truck tarps.

## R25B Tape (R25B)



R25B Tape is a single sided aggressive synthetic elastomeric adhesive that bonds instantly to properly prepared polyethylene and polypropylene. The black polymer backing and adhesive is specially formulated to provide years of performance even in direct sunlight. A poly release liner provides for ease of installation. Available in a 4" x 100' roll.

## Dura-Clip (CLIP11)



These full size clips are 11" long and fit most commercial scaffolding. Dura-Clips will securely fasten your poly sheeting to scaffolding, reducing wind whip and increasing the life of your enclosure. Clips are normally placed about every 3' onto the enclosure.

## Butyl Seal Tape (TP2BR)



Butyl seal is a double-sided aggressive reinforced black butyl rubber tape used to join panels of polyethylene and polypropylene together by overlapping the edges and applying Butyl Seal in between. It is also used to adhere to concrete walls and footings when properly prepared. Butyl Seal is non-hardening and flexible. Available in 2" x 50' roll.

## Tie-Down Buttons (BUTI)



Tie-Down Buttons help keep plastic sheeting securely in place. They are designed to eliminate traditional grommets in plastic sheeting up to 10 mil thick. Tie-Down Buttons are reusable plastic fittings that are easy to install in any position.

## Dura♦Skrim® Reinforced Sandbags



Dura♦Skrim reinforced sandbags are used to secure large covers and liners to prevent wind damage. Made from Dura♦Skrim 8 & 12 mil reinforced polyethylene, they are designed for a minimum life of 2 years in exposed applications. These 15" wide x 24" long bags will hold 35 lbs. Sandbags are available in other Raven reinforced materials with minimum order requirements. 11.8" Cable Ties are available.

## Raven Welding Rod



Raven Welding Rod is used for field seaming, repairs and detail work, such as installing pipe boots. Packaged in 10 lb spools, it is available in 4mm and 5mm sizes to fit most brands of extrusion guns. Raven Welding Rod is made from a thermally UV stabilized LLDPE resin and is available in both black and white to correspond with the color of geomembranes being utilized.

# RAVEN INDUSTRIES ACCESSORIES

## Tape Accessory Properties

	<b>Canvex® Seal Tape (TS4WT)</b>	<b>VaporBond Tape (TVB4)</b>	<b>R25B Tape (R25B)</b>	<b>Butyl Seal Tape (TP2BR)</b>
Backing	Woven Co-Polymer	7.5 Mil Polyethylene	8 mil Polyethylene	Coated Release Paper
Adhesive	1.75 Mil Pressure-Sensitive Acrylic Adhesive	1.5 Mil Rubber Based Pressure-Sensitive	17 mil +/- 2 mil Synthetic Elastomeric	1 mm Black Butyl Rubber
Color	White	White	Black	Black
Type	Single Sided	Single Sided	Single Sided	Double Sided
Size	4" x 100'	4" x 210'	4" x 100'	2" x 50'
Adhesion Values	45 oz./ inch (to steel)	30 oz./ inch (to steel)	20# / inch width	107.5 oz./ inch (to steel)
Service Temp.	-40° F to +200° F	-40° F to +180° F	20° F to +180° F	30° F to +100° F
Minimum Application Temp.	40° F	50° F	35° F	35° F
Ideal Storage Temp./Humidity	70° F w/ 40-50% Humidity	70° F w/ 40-50% Humidity	70° F w/ 40-50% Humidity	70° F w/ 40-50% Humidity

## General Seaming / Repair Guidelines (Seaming recommendations vary per application)

Film	(TVB4) VaporBond White Tape	(TS4WT) Canvex Seal Tape	(TP2BR) Butyl Seal Tape	(R25B) R25B Tape	Sew & Tape	Iron Weld	Hot Wedge Weld	Hot Air Weld	Extrusion Weld
Rufco 300 White	•	•	•	•	•				
Dura-Skrim 2 & 2FR	•	•	•	•	•				
Dura-Skrim 6CC, 6WW, 6BB & 6WB	•	•	•	•	•	•		•	
Dura-Skrim 10HUV & 10FR	•	•	•	•	•	•		•	
Dura-Skrim 8WB, 8BBR & 8BV	•	•	•	•	•	•		•	
Dura-Skrim 12WB, 12BBR & 12BV	•	•	•	•	•	•		•	
Dura-Skrim R20WW & R20DD	•	•		•	•	•	•	•	
Dura-Skrim J30B, J36B & J45B							•	•	•
Dura-Skrim J6WBA & J6WHDA	•	•	•	•	•	•		•	
Rufco 610B & 1010B	•	•	•	•	•	•		•	
Rufco 2010B, 2000B & PP20							•	•	•
Rufco 3010B, 3000B & PP30							•	•	•
Rufco 4000B & PP40							•	•	•
Canvex CIC	•	•	•	•	•				
Canvex C95WB & CB12WB	•	•	•	•	•				
Vapor Block 6, 10 & 15	•	•	•	•		•		•	

\*These are guidelines only and may not be suitable for all applications. Contact Raven Industries for specific application(s).

Note: To the best of our knowledge, unless otherwise stated, these are typical property values and are intended as guides only, not as specification limits. RAVEN INDUSTRIES MAKES NO WARRANTIES AS TO THE FITNESS FOR A SPECIFIC USE OR MERCHANTABILITY OF PRODUCTS REFERRED TO, no guarantee of satisfactory results from reliance upon contained information or recommendations and disclaims all liability for resulting loss or damage.



### PLANT LOCATION

Sioux Falls, South Dakota

[www.rufco.com](http://www.rufco.com)

### SALES OFFICE

P.O. Box 5107  
Sioux Falls, SD 57117-5107  
(605) 335-0174  
(605) 331-0333 - FAX  
**800-635-3456**