

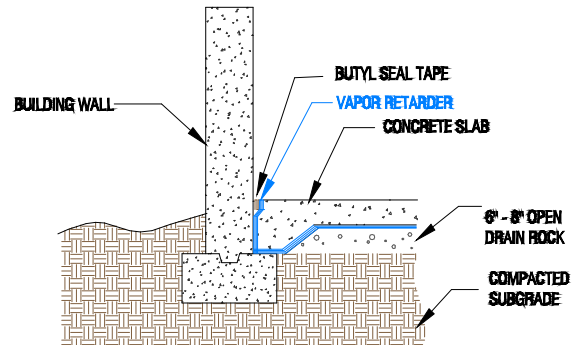


## INSTALLATION GUIDELINES

### Vapor Retarder Instructions - Under Concrete Slab

#### VAPOR RETARDER PLACEMENT

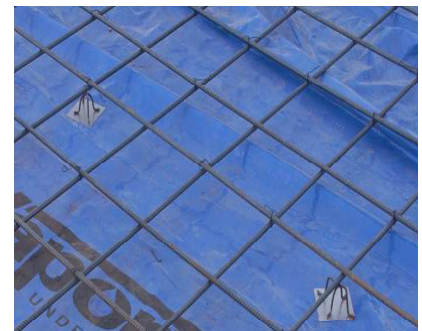
1. Level and tamp or roll granular base as specified by your architectural or structural drawings. If sharp crushed rock is used, a  $\frac{1}{2}$ " layer of fine grade compactable fill is required between the base and the vapor retarder.
2. Unroll **RUFCO** running the longest dimension parallel with the direction of the pour and pull open all folds to full width.
3. Lap **RUFCO** over the footings and seal to the vertical foundation walls with Raven Butyl Seal tape. Overlap joints a minimum of 6 inches and seal overlap with Raven Vapor Bond tape.



4. All holes or openings through **RUFCO** must be effectively sealed. Seal around sewer pipes, support columns or any other penetration with Raven Vapor Boot System. Pipe boots may also be fabricated from **RUFCO** membrane and sealed with an elastomeric sealant (Polyurethane or butyl caulk) and fastened with Raven Vapor Bond tape create a monolithic membrane between the surface of the slab and moisture sources below and at the slab perimeter.

#### PROTECTION

5. When installing reinforcing steel and utilities, in addition to the placement of concrete, take precaution to protect **RUFCO**. Carelessness during installation can damage the most puncture-resistant retarder. Provide for additional protection in high traffic areas. Use a minimum of class A per ASTM E1745 vapor retarder for direct traffic from ready-mix trucks or concrete buggies.
6. Use only brick-type reinforcing bar supports to protect **RUFCO** from puncture.
7. Avoid driving stakes through **RUFCO**. If this cannot be avoided, each individual hole must be repaired.
8. If a cushion or blotter layer is required in the design between the vapor retarder and the slab, additional care should be given if sharp crushed rock is used. Washed rock will provide less chance of damage during placement. Care must be taken to protect blotter layer from precipitation before concrete is placed.



Raven **RUFCO** can be used as a component in systems to control radon, methane and soil poisons from oil byproducts

*(These are very general installation instructions. Instructions on architectural or structural drawings should be reviewed & followed. ASTM E 1643 also provides valuable installation information.)*

ENGINEERED FILMS DIVISION



PH: (800) 635-3456 - [www.rufco.com](http://www.rufco.com) - FAX: (605) 331-0333