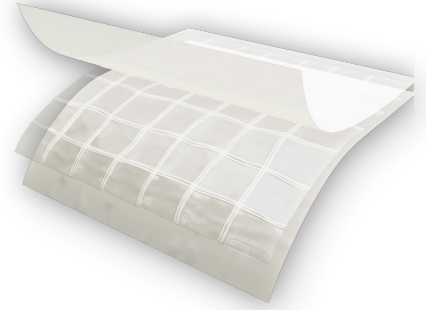


■ Description

Griffolyn® TX-1200 FR is a 3-ply laminate combining two layers of linear low density polyethylene and a high-strength cord grid. It is specifically engineered to provide high strength and durability in a lightweight material.



■ Features and Benefits

- Multiple layers and cord reinforcement resist punctures and tears.
- Cold-crack resistance eliminates failures in cold temperatures.
- Low permeability greatly inhibits moisture transmission.
- Flexibility and light weight allow for easy handling and quick installation.
- Custom fabrication is available to meet your specifications.
- Long life expectancy allows for significant cost savings through reuse and fewer replacements.
- Passes NFPA 701 Test 2 (Large Scale) – “Standard Methods of Fire Tests for Flame Propagation of Textiles and Films”.
- Class I, Class A flame spread rating per UBC-42 and ASTM E-84.

■ Physical Properties & Typical Values

PROPERTY	ASTM TEST METHOD	U.S. VALUE	METRIC VALUE
Weight	D-3776	45 Lb/1000 Ft ²	22 Kg/100 m ²
3" Tensile Strength	D-882	145 LBF	645 N
Puncture Strength	D-4833	48 LBF	214 N
PPT Resistance	D-2582	40 LBF	178 N
Dart Impact Strength	D-1709	2.1 LBS	945 g
Cold Impact Strength	D-1790	-10°F	-23.4°C
Fire Retardancy	E-84	5 flame spread, 45 smoke developed	
	NFPA 701	PASS	
Permeance	E-96	0.036 Grain/Hr•Ft ² •in.Hg	2.06 NG/(PA•S•M ²)

MADE IN THE USA

TX-1200 FR

GRIFFOLYN®

■ Suggested Applications

- Temporary walls, plant dividers, building enclosures and containment tents.
- Floor covers, dust partitions and clean room enclosures.
- Architectural vapor retarder in walls & ceilings and in roofing systems.
- Pallet, cask and drum covers.
- Shipping container covers and liners.

■ Ordering Information

AVAILABLE COLORS:

Natural and Yellow

Custom sizes up to 100' x 200' and custom fabrication are available to meet your exact specifications.

■ Usable Temperature Range

Minimum: -15 F -27 C

Maximum: 170 F 77 C

The information provided herein is based upon data believed to be reliable. All testing is performed in accordance with ASTM standards and procedures. All values are typical and nominal and do not represent either minimum or maximum performance of the product. Although the information is accurate to the best of our knowledge and belief, no representation of warranty or guarantee is made as to the suitability or completeness of such information. Likewise, no representation of warranty or guarantee, expressed or implied, or merchantability, fitness or otherwise, is made as to product application for a particular use.