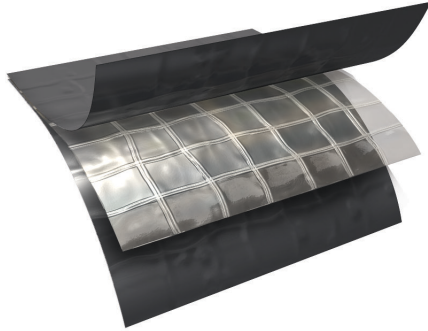


TECHNICAL DATA SHEET



DESCRIPTION

Griffolyn® Type-55 is a 3-ply laminate combining two layers of linear low density polyethylene and a high-strength cord grid. It is specifically engineered to provide high strength and durability in a lightweight material.

PHYSICAL PROPERTIES AND TYPICAL VALUES

| PROPERTY | ASTM TEST METHOD | U.S. VALUE | METRIC VALUE |
|-----------------------|------------------|--|--------------------------------|
| Weight | D-2103 | 29 LB/1000 FT ² | 14.15 KG/100 M ² |
| 3" Load @ Yield | D-882 | 82 LBF | 365 N |
| 3" Load @ Break | D-882 | 31 LBF | 138 N |
| | | 1900 PSI | 13.1 MPA |
| 3" Elongation @ Break | D-882 | 360 % | 360 % |
| Tongue Tear | D-2261 | 15 LBF | 67 N |
| Trapezoidal Tear | D-4533 | 24.5 LBF | 109 N |
| PPT Resistance | D-2582 | 25 LBF | 111 N |
| Dart Impact Strength | D-1709 - A | 1.4 LBF | 636 g |
| Cold Impact Strength | D-1790 | -20°F | -28.9°C |
| Permeance | E-96 | 0.059 Grains/Hr•Ft ² •in.Hg | 3.39 NG/(PA•S•M ²) |

FEATURES AND BENEFITS

- Multiple layers and cord reinforcement resists tears.
- UV stabilization protects the material from degradation during extended exposure to sunlight.
- Cold-crack resistance eliminates failures in extremely cold temperatures.
- Low permeability greatly inhibits moisture transmission.
- Flexibility and light weight allow for easy handling and quick installation.
- Custom fabrication is available to meet your exact specifications.
- High durability allows for significant savings through reuse and fewer replacements.

MORE ▶▶

OUR CUSTOMERS DON'T JUST *cover their business,*
▶ THEY PROTECT IT



SUGGESTED APPLICATIONS

- Pallet, drum and other custom covers for outside storage.
- Floor covers, dust partitions and cleanroom enclosures.
- Temporary walls, plant dividers, building enclosures and containment tents.
- Shipping container covers and liners.
- Custom bags and tubing.
- Architectural vapor retarder for underslab, walls, ceilings and in roofing systems.

ORDERING INFORMATION

AVAILABLE COLORS:

Clear, White, Black or Black/White

SIZES:

Rolls are available from 4' x 100' to 40' x 100' in increments of 4' widths. Some sizes available for immediate shipment. Standard length and width tolerances are $\pm 1\%$ (minimum 2")

Custom sizes up to 100' x 200' and custom fabrication are available to meet your exact specifications.

USABLE TEMPERATURE RANGE:

Minimum: -35°F -37°C

Maximum: 170°F 77°C

OUTDOOR EXPOSURE

Under normal continuous exposure the average life expectancy ranges from 12 to 24 months, depending on color.



REEF INDUSTRIES, INC.

9209 Almeda Genoa Rd. • Houston, Texas 77075

P: 713.507.4251 • F: 713.507.4295

E-mail: ri@reefindustries.com • www.reefindustries.com

TOLLFREE 1.800.231.6074

The information provided herein is based upon data believed to be reliable. All testing is performed in accordance with ASTM standards and procedures. All values are typical and nominal and do not represent either minimum or maximum performance of the product. Although the information is accurate to the best of our knowledge and belief, no representation of warranty or guarantee is made as to the suitability or completeness of such information. Likewise, no representation of warranty or guarantee, expressed or implied, or merchantability, fitness or otherwise, is made as to product application for a particular use.